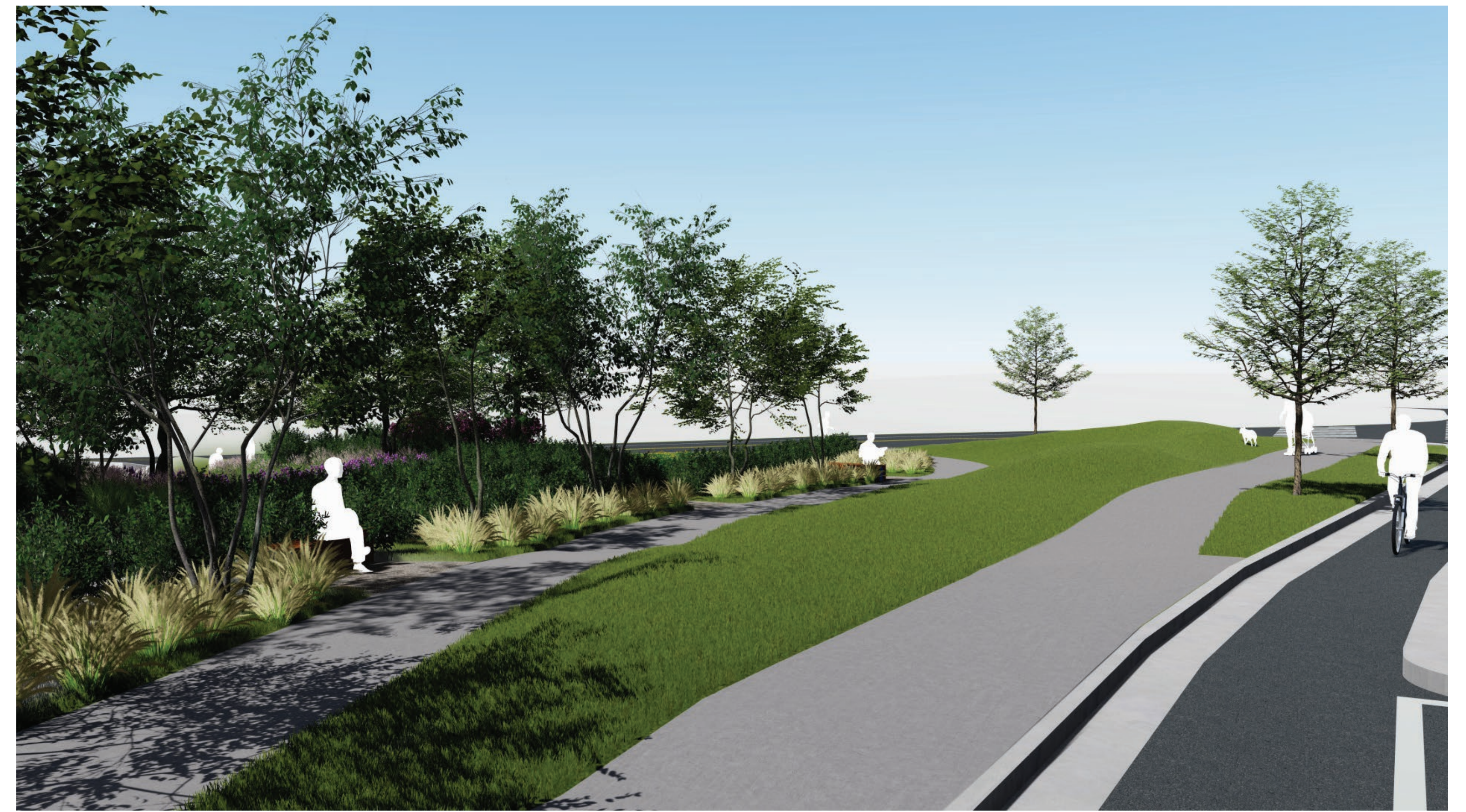


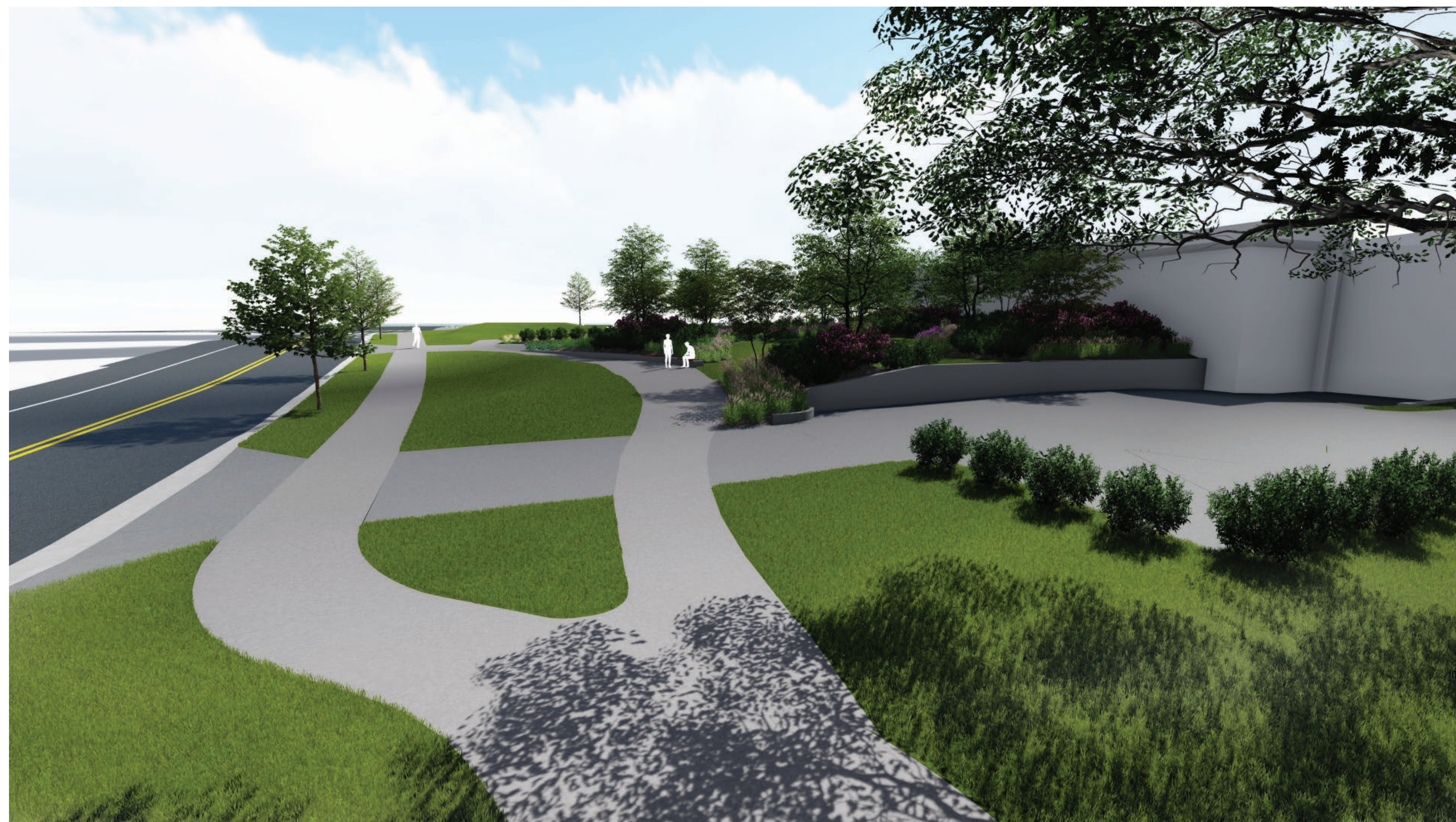
1 Perspective View - Looking Southwest

Scale: NTS



3 Perspective View - Looking East

Scale: NTS



2 Perspective View - Looking South

Scale: NTS

CRYSTAL SUBSTATION EXPANSION  
1720 S. FERN ST., ARLINGTON, VA 22202

REVISIONS		
REV	DATE	DESCRIPTION

**Dewberry**  
Dewberry Engineers Inc.  
4805 Lake Brook Drive, Suite 200  
Glen Allen, VA 23060; (p) 804.290.7957



LANDSCAPE PERSPECTIVES  
CRYSTAL SUBSTATION  
EXPANSION AND MODERNIZATION

ARLINGTON COUNTY VIRGINIA

OPERATIONAL REGION	NAME	B/M No.	SCALE	1" = 25'
PROJECT	ARB / JS	DATE	SHEET:	
DESIGNER	SRB	10/16/20	DRAWING:	
PROJECT ENGINEER	SRB	10/16/20	L-002	
APPROVED BY				