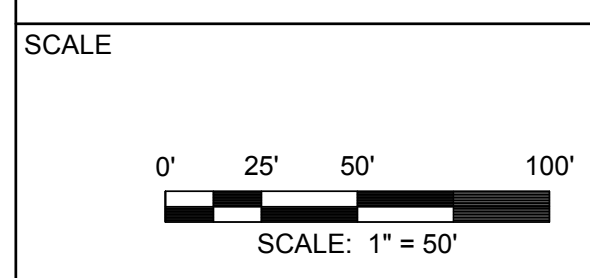
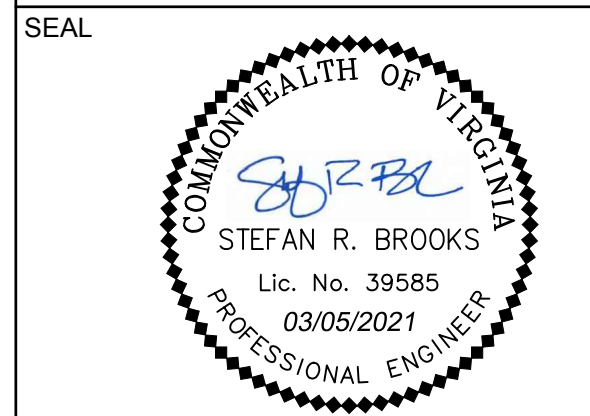


SEE INSET A ABOVE FOR ADDITIONAL SIGNING

**CRYSTAL SUBSTATION EXPANSION & MODERNIZATION**  
**USE PERMIT PLAN U-1815-69-1**  
 1720 S. FERN ST.  
 ARLINGTON, VA 22202



REVISIONS

REV	DATE	DESCRIPTION

- MOT NARRATIVE - PHASE 2**
1. Anticipated duration of Phase 1: JUL 2021 - AUG 2021 (This phase will be approximately 2 months.)
  2. Construction Activity Work Hours: See notes on Phase 1 MOT plan.
  3. This phase is for the period of construction with crane use.
  4. Close outside lane of S. Hayes St. per TTC 16.2. Install additional temporary "Sharrow" pavement markings on S. Hayes St. and S. 18th St. per MOT plans. Install signs for pedestrian detour along S. Fern St. north to 15th St. and along S. Hayes St. north to 15th St. Also, install "Bike Lane Closed" signage on S. Fern St. south of Hayes St./18th St. intersection.
  5. When use of crane is complete and removed, restore original MOT signing, barrier placement, and pavement markings.
  6. MOT implementation shall be coordinated with the County's 18th Street S contractor during construction.

**APPROVED: 3/17/2021**

CEPL20-00167  
 APPROVED PLAN SET

*Luis Araya*  
 Luis Araya, Chief, DES - Development Services Bureau



DEWBERRY PROJECT NO. 50113169		
DOMINION SHEET NAME 1160599-C-502		
DOMINION DRAWING NAME 1160599-C-502.dwg		
OPERATIONAL REGION	B/M No.	
PROJECT 003599	NAME	DATE
DESIGNER DB/MT/DS		03/05/21
PROJECT ENGINEER SRB		03/05/21
APPROVED BY		

SHEET TITLE  
**MOT PLAN  
 STAGE 2**

SHEET #  
**C-502**