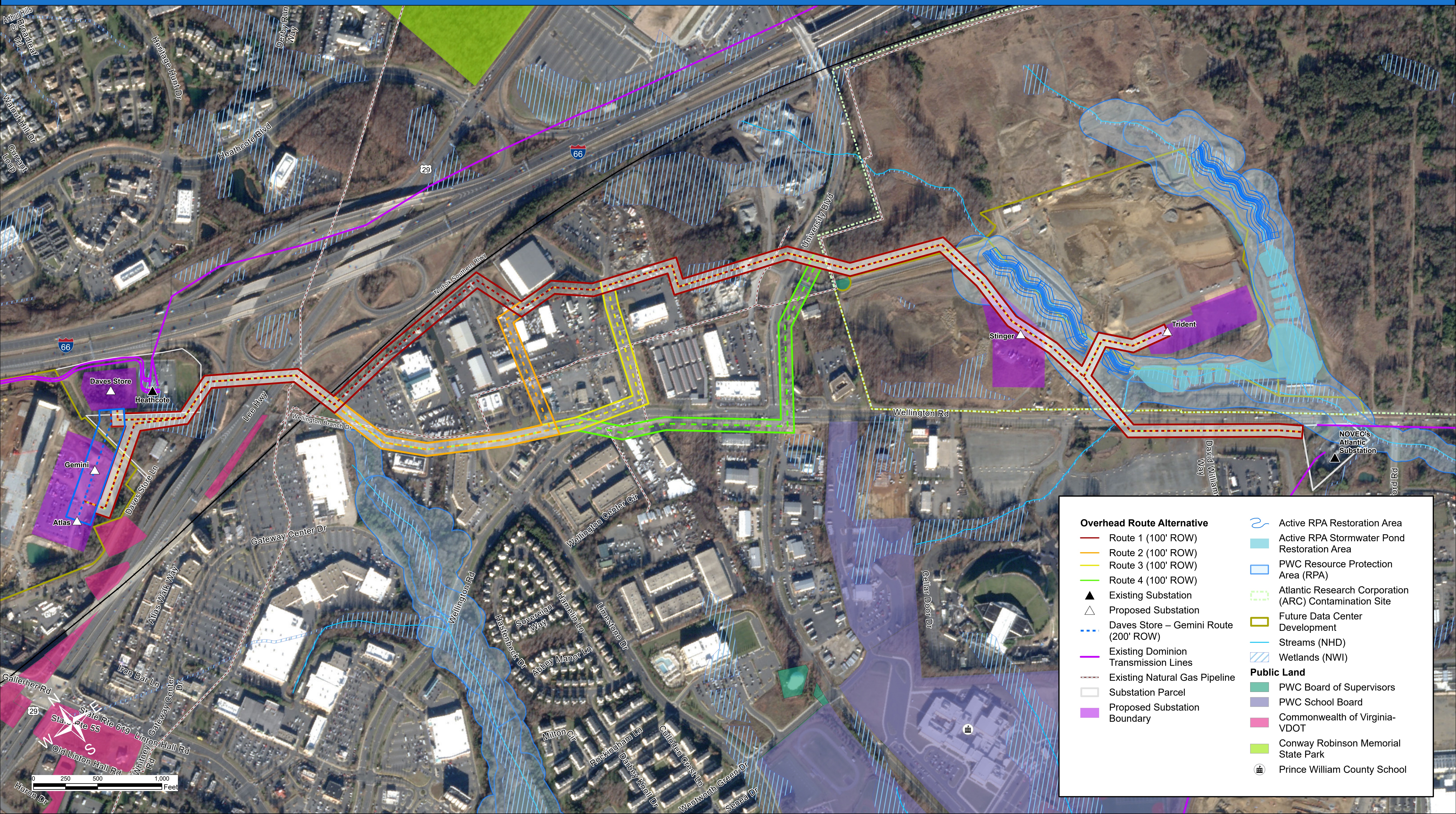


# Preliminary Transmission Line Routes



<b>Overhead Route Alternative</b>	Active RPA Restoration Area
Route 1 (100' ROW)	Active RPA Stormwater Pond Restoration Area
Route 2 (100' ROW)	PWC Resource Protection Area (RPA)
Route 3 (100' ROW)	Atlantic Research Corporation (ARC) Contamination Site
Route 4 (100' ROW)	Future Data Center Development
Existing Substation	Streams (NHD)
Proposed Substation	Wetlands (NWI)
Daves Store – Gemini Route (200' ROW)	<b>Public Land</b>
Existing Dominion Transmission Lines	PWC Board of Supervisors
Existing Natural Gas Pipeline	PWC School Board
Substation Parcel	Commonwealth of Virginia-VDOT
Proposed Substation Boundary	Conway Robinson Memorial State Park
	Prince William County School

# Daves Store Substation and 230 kV Transmission Line Project