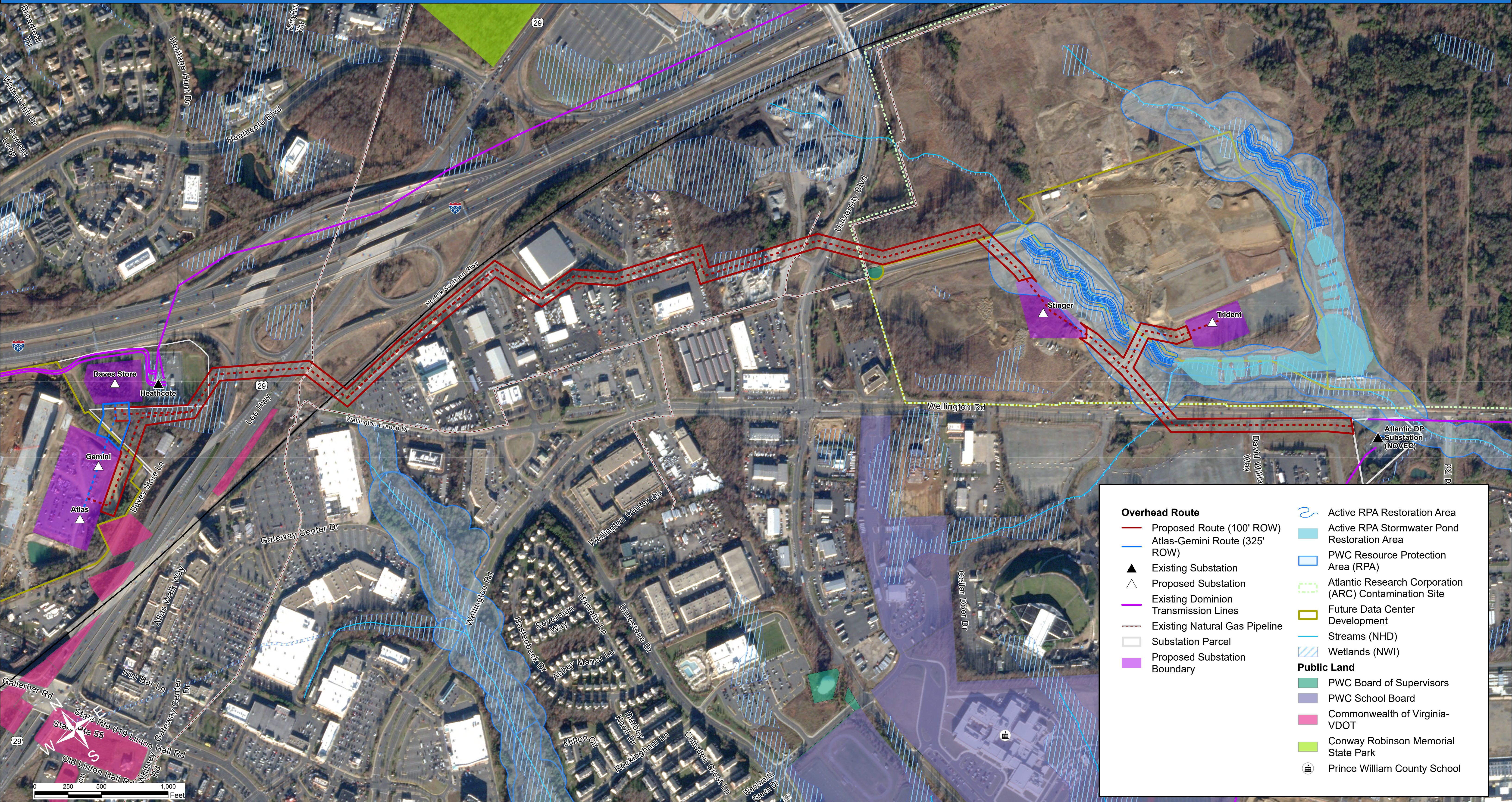


SCC Approved Transmission Line Routes



Overhead Route		Public Land	
	Proposed Route (100' ROW)		PWC Board of Supervisors
	Atlas-Gemini Route (325' ROW)		PWC School Board
	Existing Substation		Commonwealth of Virginia-VDOT
	Proposed Substation		Conway Robinson Memorial State Park
	Existing Dominion Transmission Lines		Prince William County School
	Existing Natural Gas Pipeline		
	Substation Parcel		
	Proposed Substation Boundary		
	Active RPA Restoration Area		
	Active RPA Stormwater Pond Restoration Area		
	PWC Resource Protection Area (RPA)		
	Atlantic Research Corporation (ARC) Contamination Site		
	Future Data Center Development		
	Streams (NHD)		
	Wetlands (NW1)		

Daves Store Substation and 230 kV Transmission Line Project