

Project Overview

Dominion Energy is committed to working safely and courteously on or near your property. This new proposed right of way is 0.6 miles long and located near Evergreen Mills Road in eastern Loudoun County.

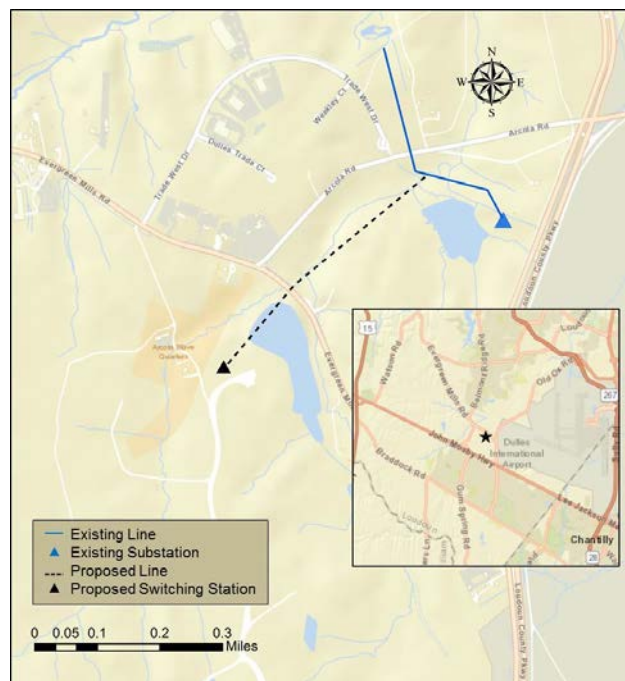
The station, along with new transmission infrastructure, is needed to accommodate increased demand and maintain reliability for our customers.

The proposed new switching station planned for construction near Evergreen Mills Road will also connect two transmission lines to the station. Beginning in the fall of 2019, we will start to clear new right of way to build transmission structures that include galvanized steel monopoles, averaging 115 feet tall. Construction is expected to be complete in the spring of 2021.

Our plan is to build this new switching station and associated infrastructure in a manner that:

- Provides long-term reliability and durability without excessive maintenance
- Delivers operational system flexibility to meet future needs
- Complies with mandatory standards to ensure safety and reliability
- Minimizes impact to the local area and environment

July 2018	Initial outreach to local officials
March 2018	Public outreach and notification of proposed project
April 2019	Application filed with the State Corporation Commission



For more information about this project, contact us by sending an email to powerline@dominionenergy.com or calling 888-291-0190.