



Investing in Our Communities

Dominion Energy image. Not project specific.

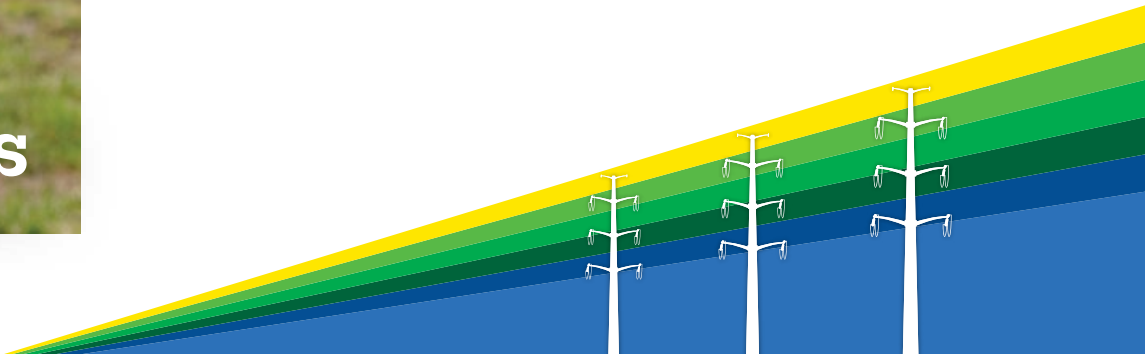


Electric Transmission
P.O. Box 26666
Richmond, VA 23261

**Learn more about upcoming work
in Alexandria, Virginia.**



**SCAN HERE
TO LEARN
MORE**



We are doing work in your community

Glebe Electric Transmission Project

At Dominion Energy, we are committed to keeping you informed of upcoming work in your community. Additional construction activity in your area will begin on January 6, 2025, as part of the ongoing Glebe Electric Transmission Project. The noisiest activities will occur during daytime hours, including excavation, hydro-vac, and welding.

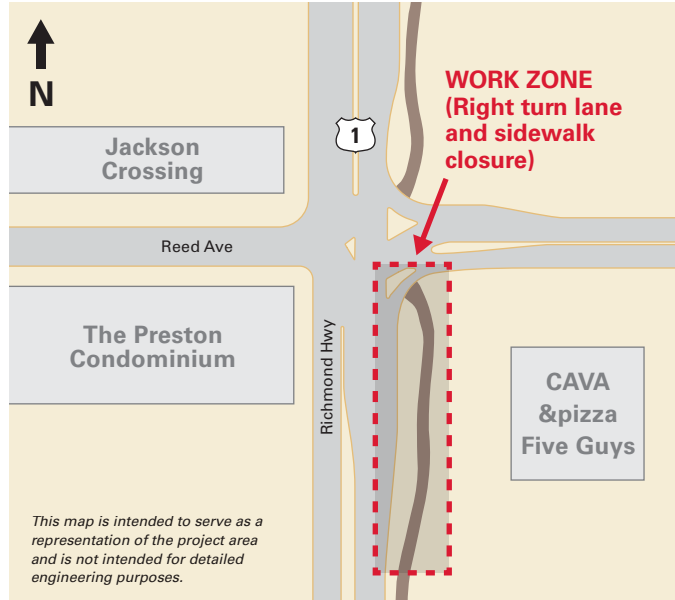


SCAN HERE
TO LEARN
MORE

We have received 24-hour work and noise variance permits from the City of Alexandria. Overnight work will be limited to generators, pumps, and other essential equipment, and crews will use noise blankets to mitigate noise.

For more information about this project, please visit our website at [DominionEnergy.com/Glebe](https://www.dominionenergy.com/Glebe). If you have any concerns or complaints about noise, please get in touch with us directly.

Thank you for your understanding and support as we complete this important work.



Protecting the grid against natural and man-made acts is a top priority. You can learn more about our commitment to safety at powerlines101.dominionenergy.com.

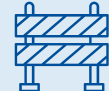
Upcoming Work

Richmond Hwy at E Reed Ave

Starting on January 6, 2025



Work
in your area



Temporary traffic
impacts

CONTACT US

Website: [DominionEnergy.com/Glebe](https://www.dominionenergy.com/Glebe)

Email: powerline@dominionenergy.com

Phone: 888-291-0190