

**WELCOME!**

**The Ironbridge Substation virtual  
community meeting will begin shortly.**



**Dominion  
Energy<sup>®</sup>**

Powering Your Every Day.<sup>SM</sup>

# Thank you for joining us!



- **Welcome!**
- This meeting is being recorded. Your audio will be muted throughout the entire presentation.
- **We welcome your feedback and questions!**
- Please submit your questions through the Q&A feature in WebEx.



# Meeting Agenda

- Project Overview
- Construction- what to expect
- Substation Location
- Rezoning Application



# Meet the team



- Chanel – Claire      Communications
- Stephen              Project Manager
- Christa                Senior Siting and Permitting Specialist
- Heather               Environmental Permitting Specialist II
- Patrick                Site Plan Engineer

When keeping workers safe in the summer heat, remember:

**WATER** 

**REST** 

**SHADE** 



**Additional Tips:**

- Apply sunscreen and hydrate regularly.
- Avoid caffeine in heat.
- Wear hats and light clothing in the sun.

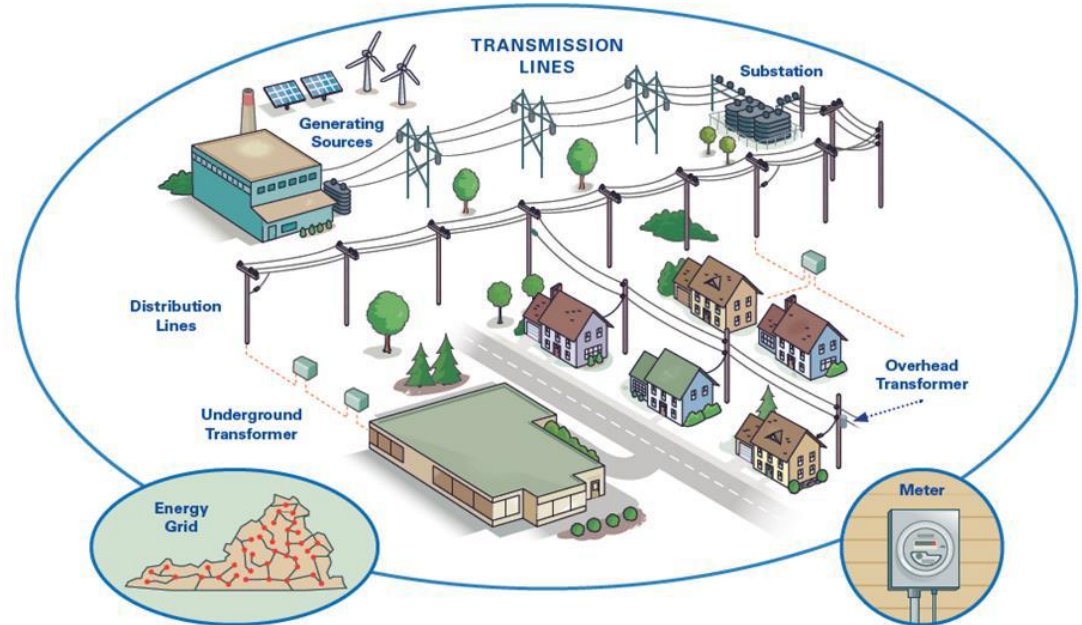
# Substations: A Vital Role in the Energy Grid



**Transmission lines** move energy generated at our power stations to substations.

**Substations** take that energy and either lower or increase the voltage so distribution lines can safely carry the energy to homes and businesses.

Transmission lines are connected and work together to form what we call the **energy grid**.



# Project Overview



- Will replace aging equipment
- Will maintain reliable service for our customers
- 230 kilovolt (kV) substation will be expanded/built on a parcel that was purchased in 2023



# Construction Activities



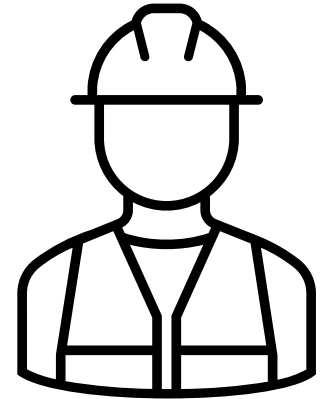
*Dominion Energy image of proposed conditions*

- Prepare and level the site for substation pad installation for expansion area
- Clear trees within 10 feet of the expanded substation fence
- Arrange and install substation equipment according to engineering designs
- Place fencing around the substation perimeter to maintain security measures



# Construction Timeline

Date Range	Activity
Early 2026	<ul style="list-style-type: none"><li data-bbox="759 489 1267 525">▪ Construction Activities Begin</li></ul>
Early 2027	<ul style="list-style-type: none"><li data-bbox="759 587 1199 623">▪ Construction completed</li><li data-bbox="759 631 1213 667">▪ Restoration of work area</li></ul>



*This schedule is subject to change based on weather, permits, etc.*

# Construction Related Impacts



Your electric service will not be impacted



This project may have minimal construction noise



This project may have light traffic impacts

## Typical Construction Schedule

- Monday - Friday
- 7:00 a.m. – 5:00 p.m.

## Prior to construction

- Notification to adjacent neighbors

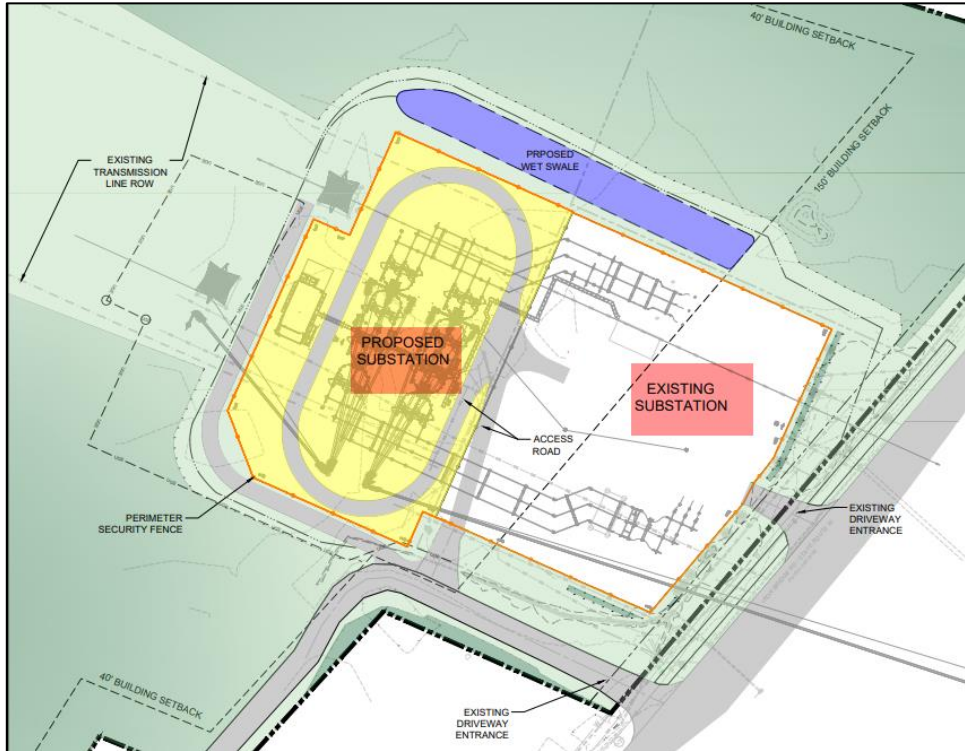
# Substation Fencing



*Simulation of similar fence. Not site specific.*

- Vetted through a rigorous engineering process to ensure our equipment is protected, monitored, and operating efficiently and safely
- Aids in community safety
- Substation equipment is housed within fencing
- Consists of 12' chain link fencing
- Vegetation will be placed around the perimeter of the substation

# Substation Expansion Location



- Existing Footprint location
- Proposed Substation location
  - Will expand approximately 200' to the west of the existing substation
- Create access roads within the substation

# Rezoning Application

- The substation expansion requires approval for rezoning with Chesterfield County.
- A rezoning application was submitted to Chesterfield County in November 2023.
- Dominion Energy has applied for an expansion to the current conditional use permit.



## Q&A

Please stand by as we compile  
your submitted questions.

Thank you for your patience!

# Thank you

- You can submit all future questions via email at [Powerline@dominionenergy.com](mailto:Powerline@dominionenergy.com) or by calling 888-291-0190
- For more information, please visit: [DominionEnergy.com/ironbridge-Substation](https://www.dominionenergy.com/ironbridge-substation)

