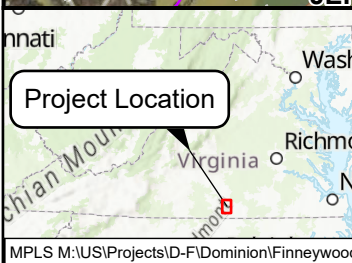
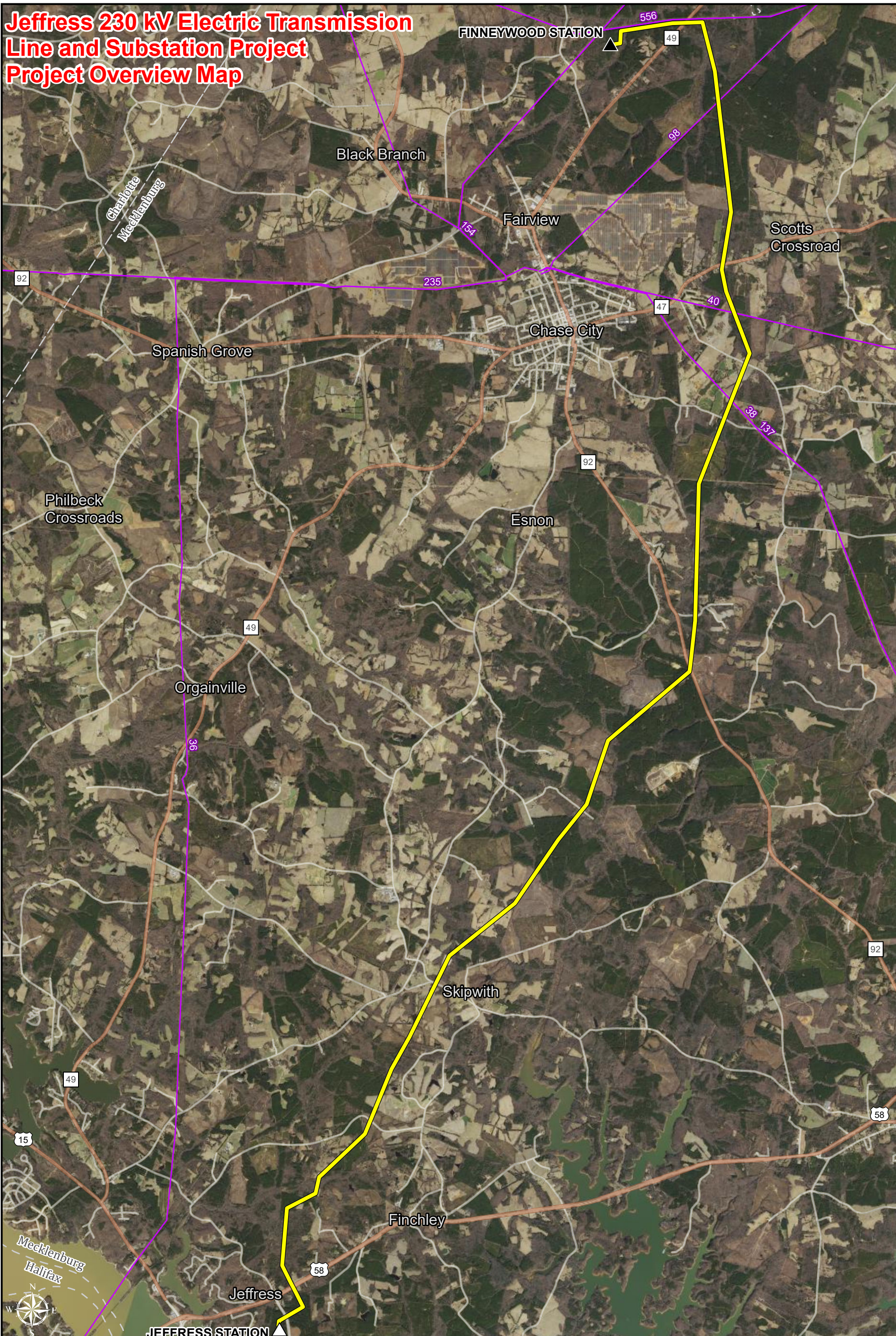




Jeffress 230 kV Electric Transmission Line and Substation Project Project Overview Map



- ▲ Existing Substation
- △ Proposed Substation
- Existing Dominion Transmission Line
- SCC Approved Route

Scale: 1:66,000
0 0.5 1 Miles

Project Overview
230 kV Finneywood-Jeffress Lines and Jeffress Switching Station Conversion Project
 Dominion Energy Virginia
 Mecklenburg County, Virginia

SCALE: 1:66,000 when printed at 11x17
 DRAWN BY: Nicole.Dunn