

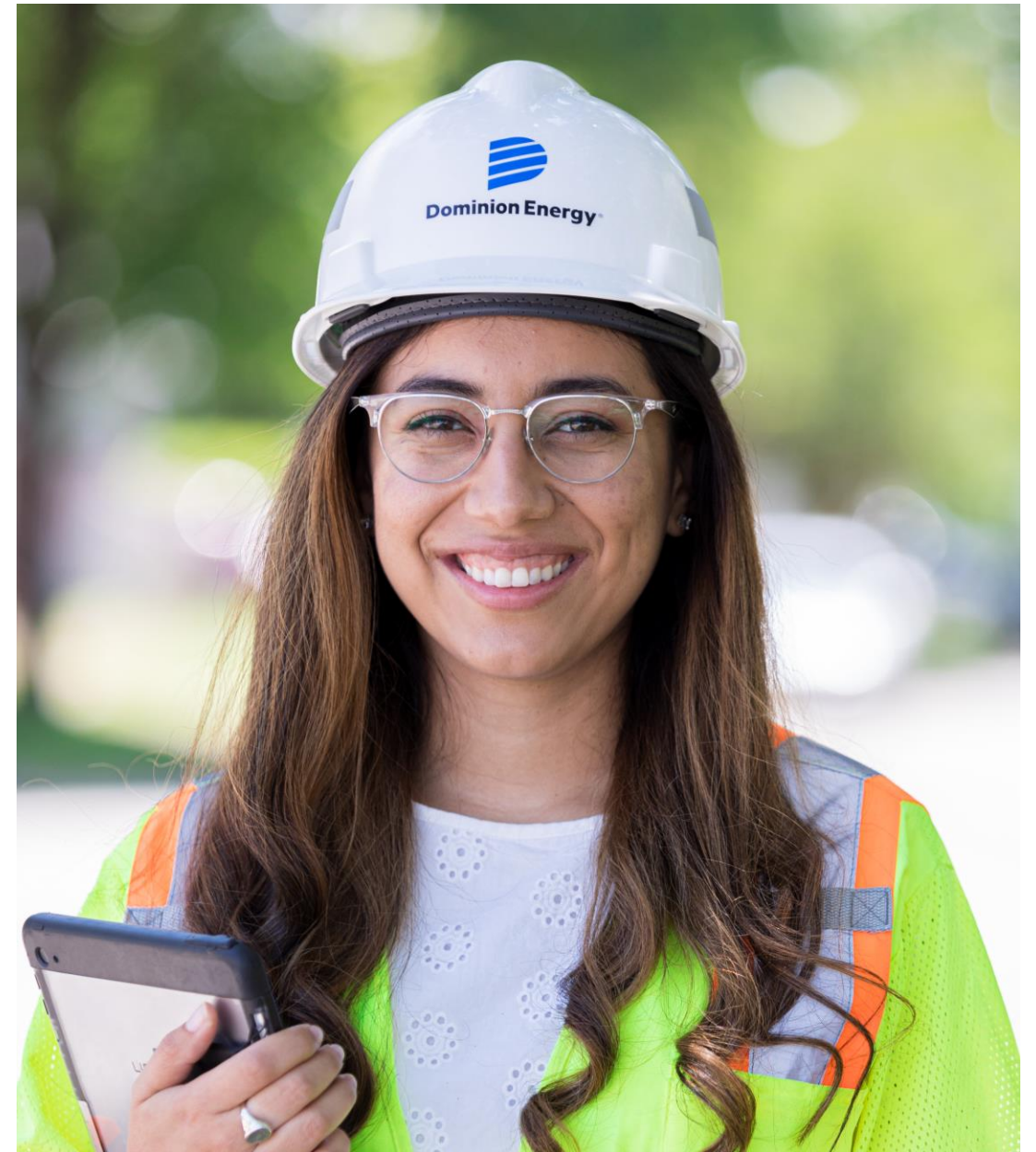
Meeting Virginia's Energy Needs

February 15 & 16, 2023
Community Meeting



**Dominion
Energy®**

Actions Speak Louder



Electric Transmission Line Planning and Approval Process

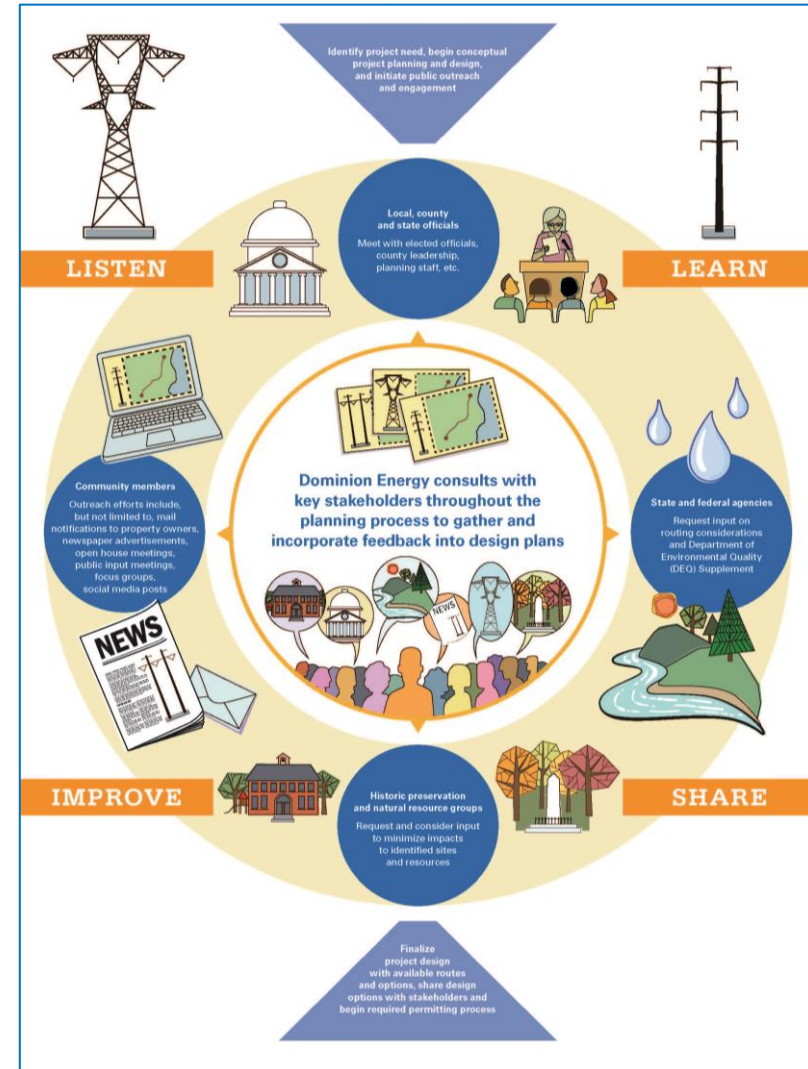


Relationships

- Value what the community values
- Seek available mutual benefits

Trust

- Discussion, connection and empathy
- Stakeholders' willingness to compromise

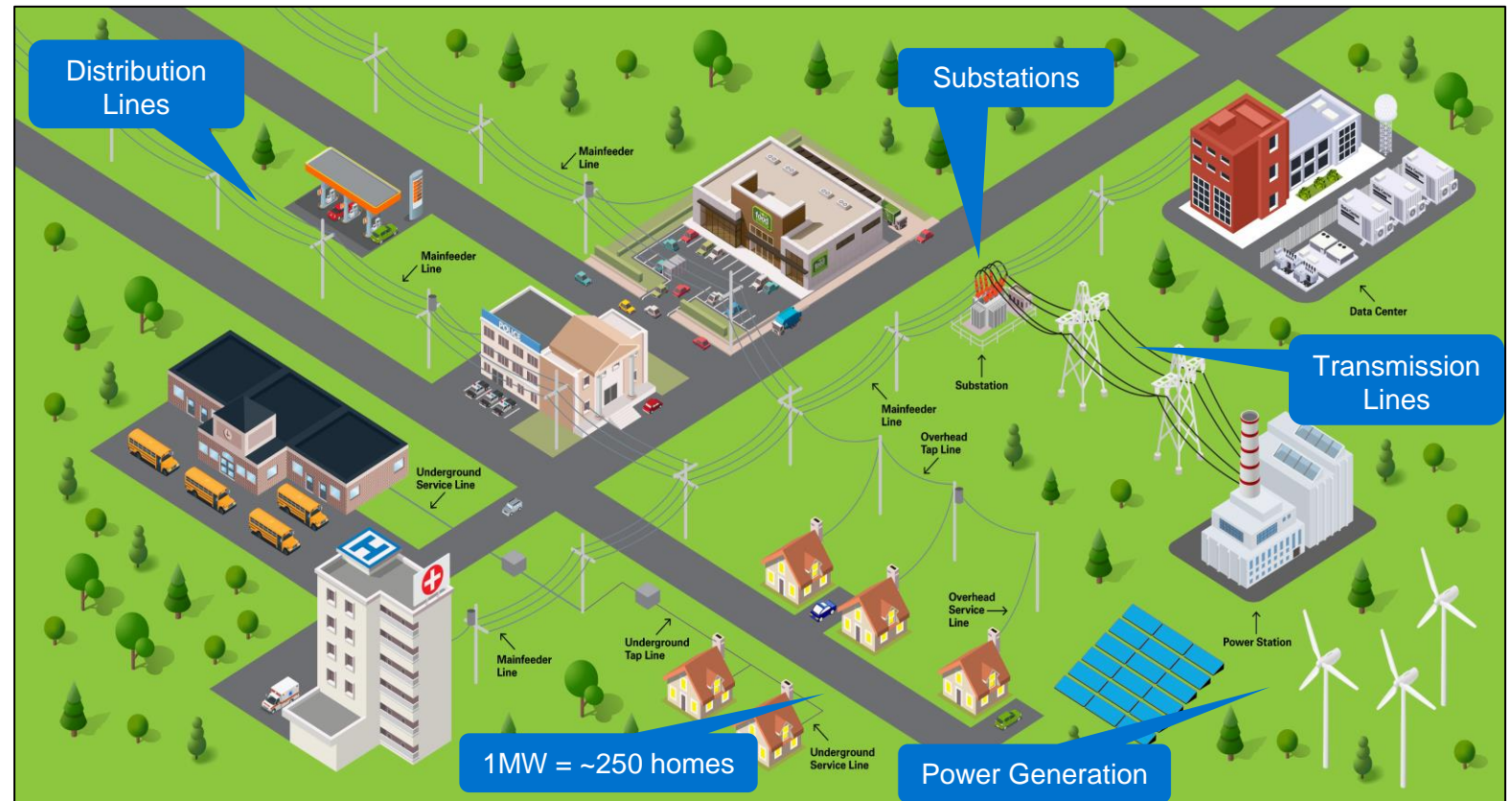


The Grid and Obligation to Serve

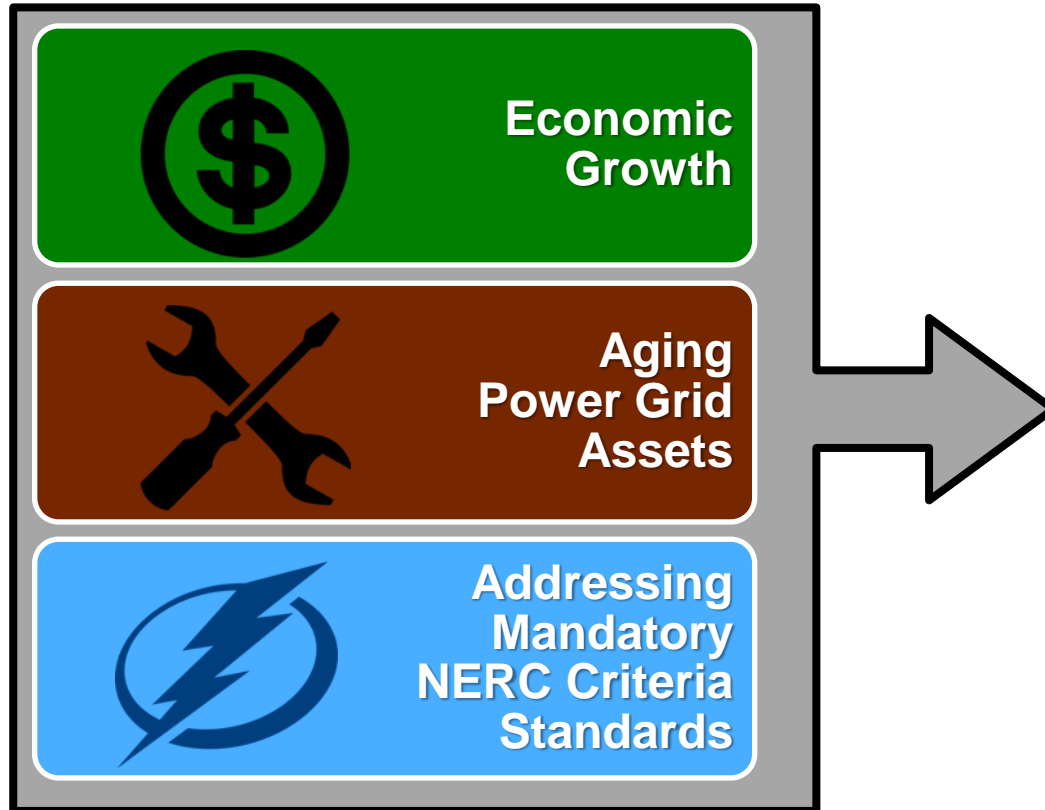
Electric transmission and electric distribution lines both carry electricity, but they look different and serve different functions.

Electric transmission lines are high voltage lines that carry electricity from our power stations to substations.

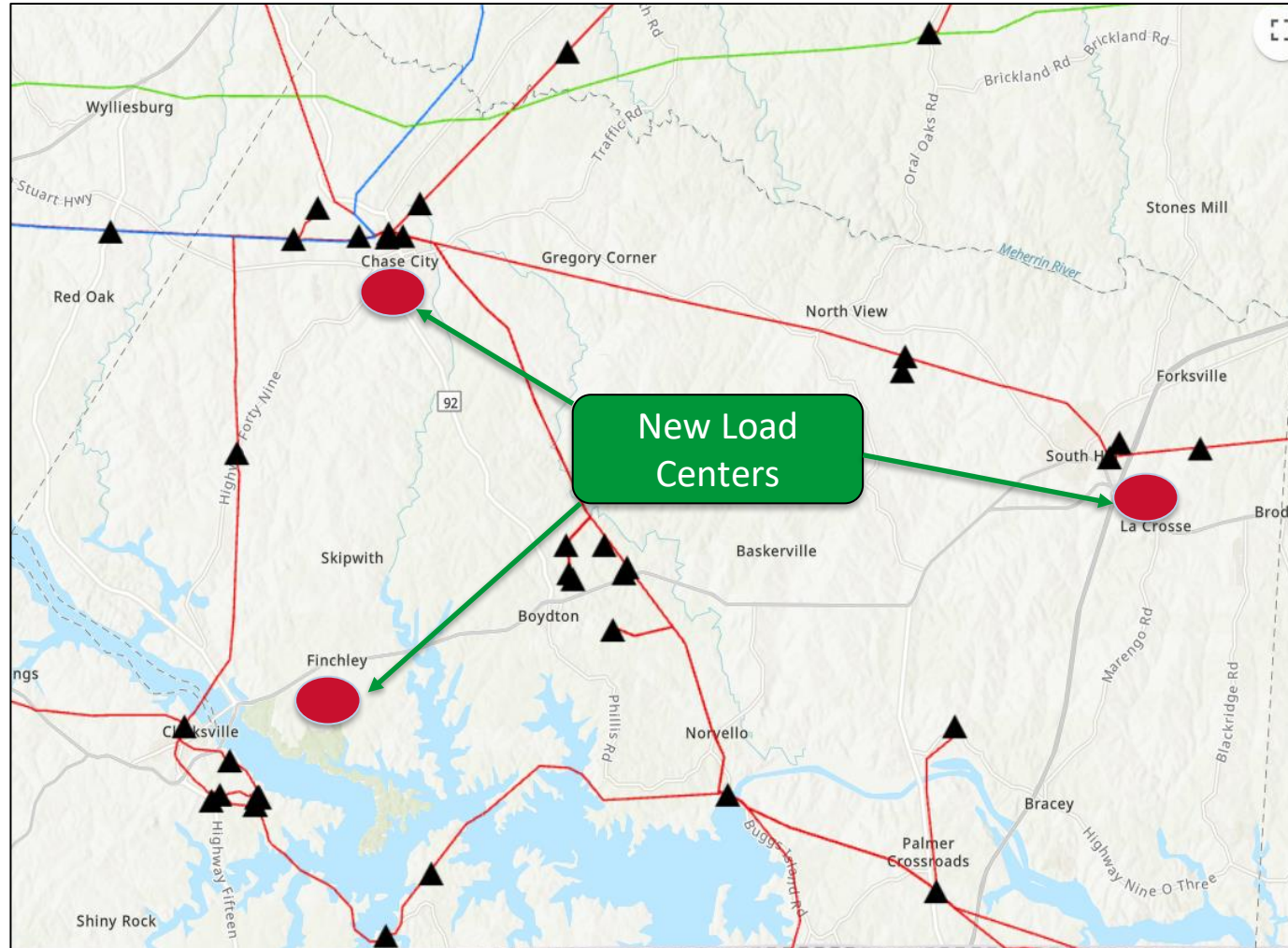
Once the transmission line reaches a substation, the voltage is lowered and delivered to your home or business via electric distribution lines.



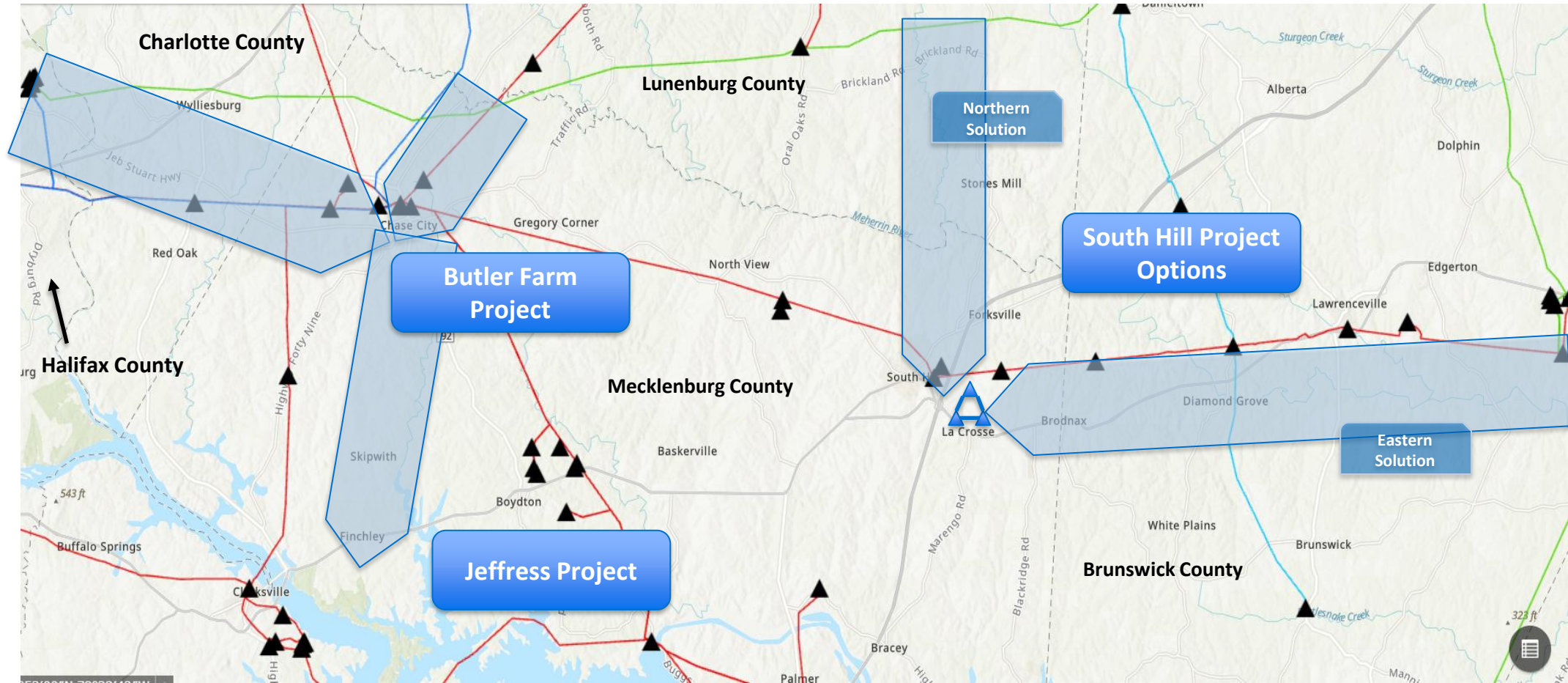
Forces Driving Infrastructure Need



Current System



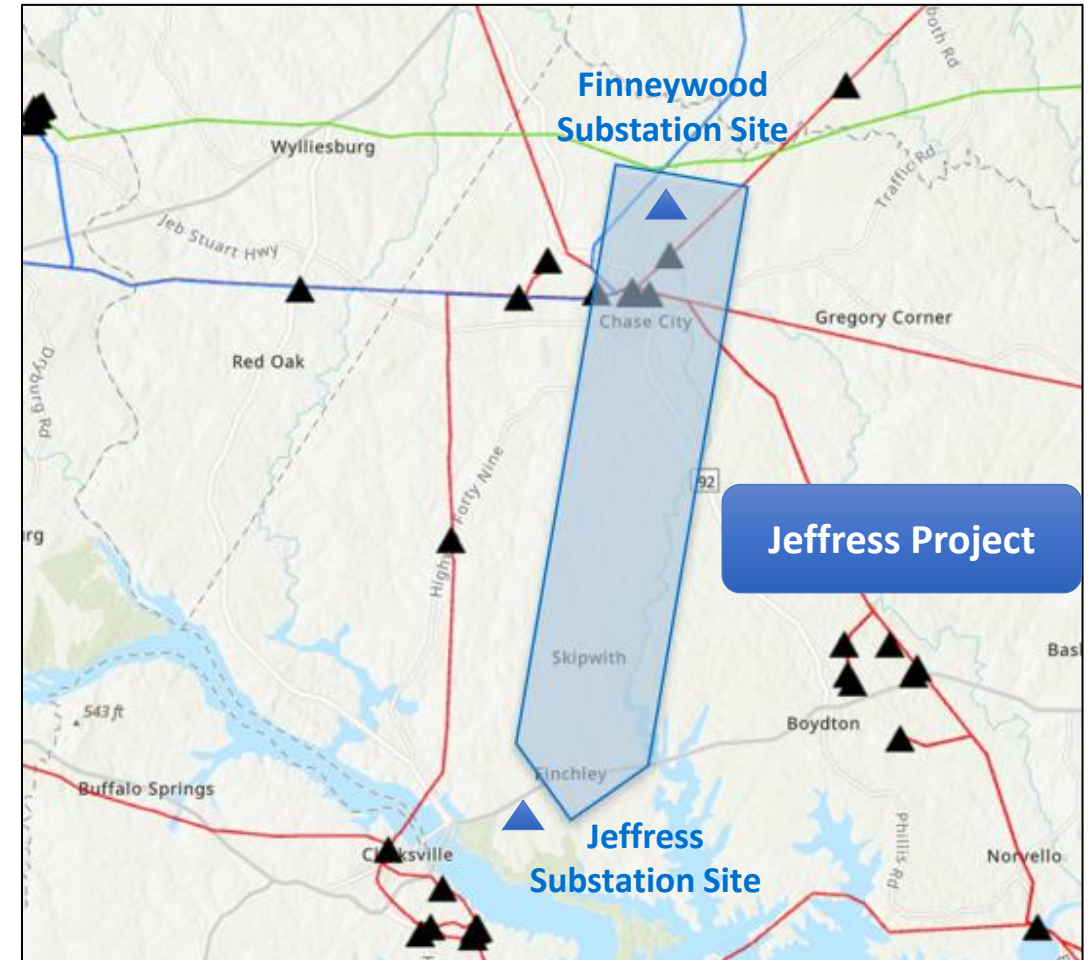
Southside Infrastructure Enhancements Overview



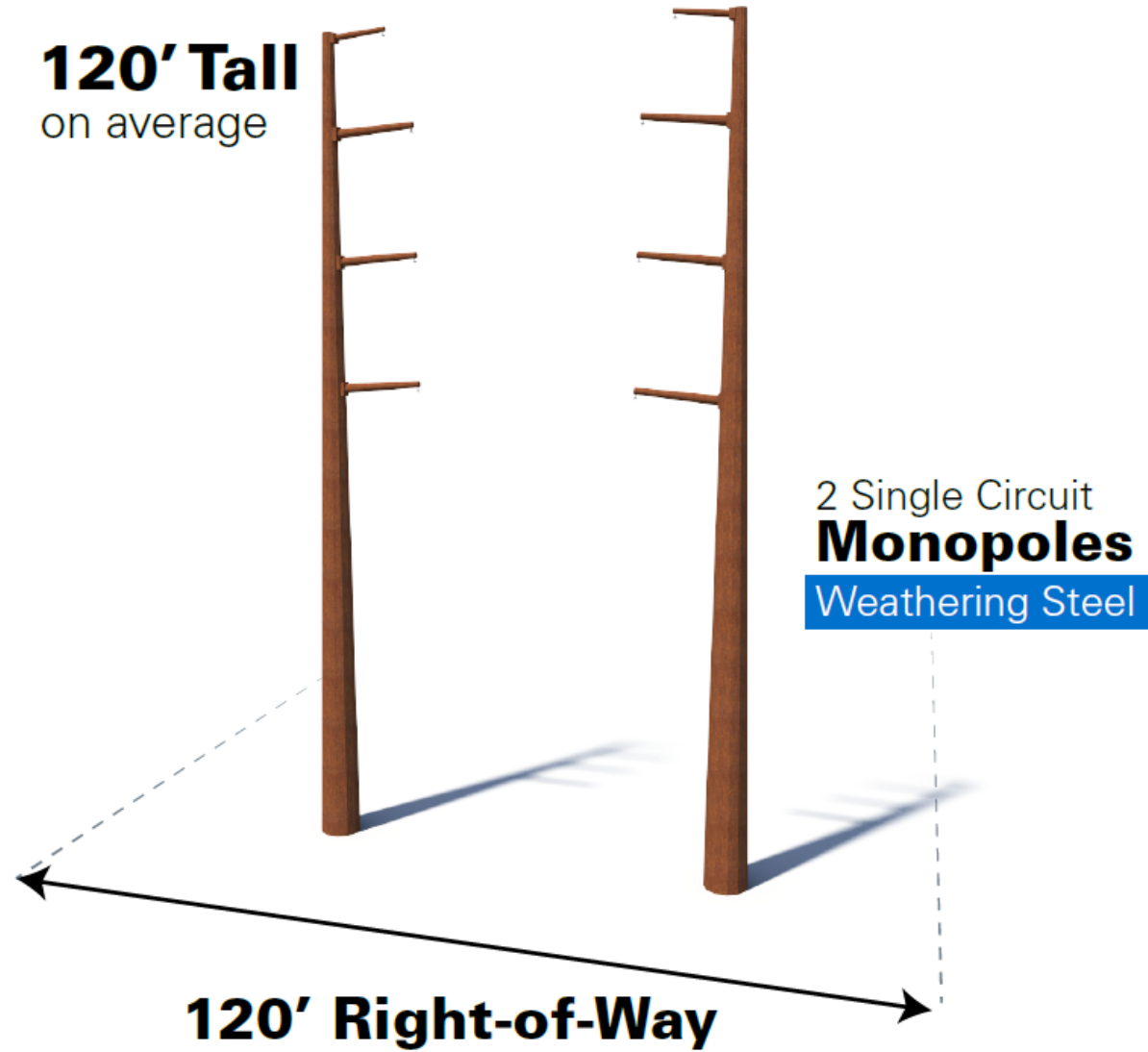
Jeffress Project

Mecklenburg County

- **Project Scope**
 - Build approximately 18-21 miles of two single-circuit 230 kV transmission lines paralleling one another on shared right of way from the Finneywood Substation Site to the Jeffress Substation Site
- **Right of way needs**
 - ~120 feet wide



Finneywood - Jeffress Typical Structures



Visualization is for discussion purposes only.
Final design is subject to change pending public, engineering, and regulatory review.

Foundational Principles

- Process always begins with review of existing rights of way
- Respect the land use of the property owners
- Co-locate with other infrastructure, where appropriate
- Stay close to property boundaries
- Minimize impact on private property, and environmental, historic, cultural and scenic resources



Route Options

Route options from the Finneywood Substation Site to the Jeffress Substation Site:

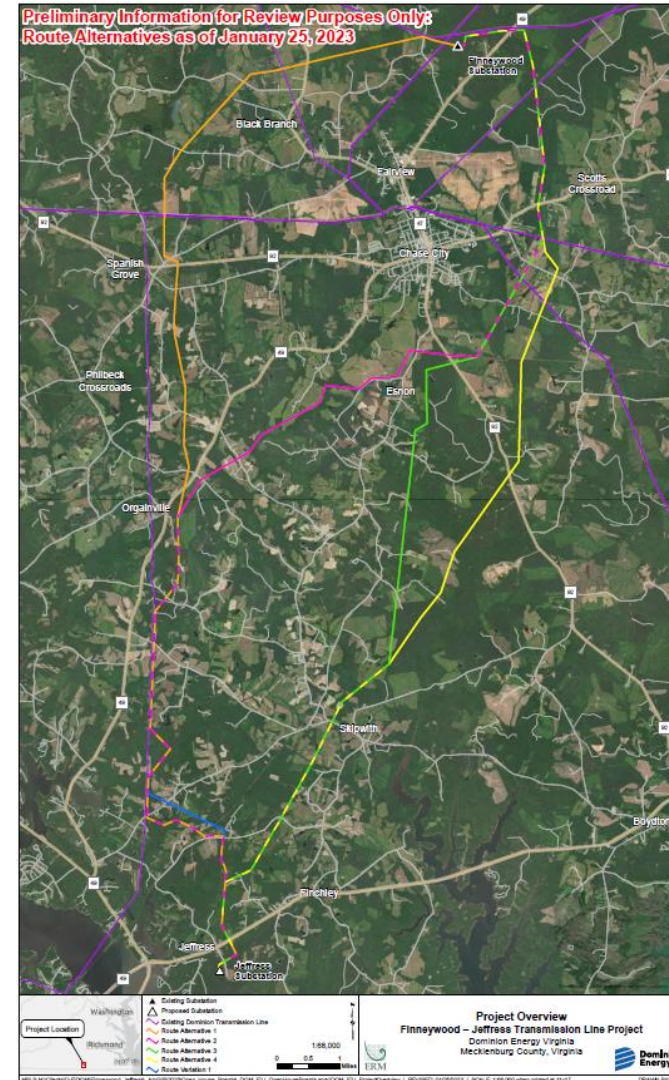
Finneywood-Jeffress Route Alternative 1 (orange)

Finneywood-Jeffress Route Alternative 2 (pink)

Finneywood-Jeffress Route Alternative 3 (green)

Finneywood-Jeffress Route Alternative 4 (yellow)

Finneywood-Jeffress Route Variation 1 (blue)



Finneywood - Jeffress

Aerial Rendering

Typical Structure:

120' - 2 Single Circuit
Monopoles

Right-of-Way Width:

120 Feet

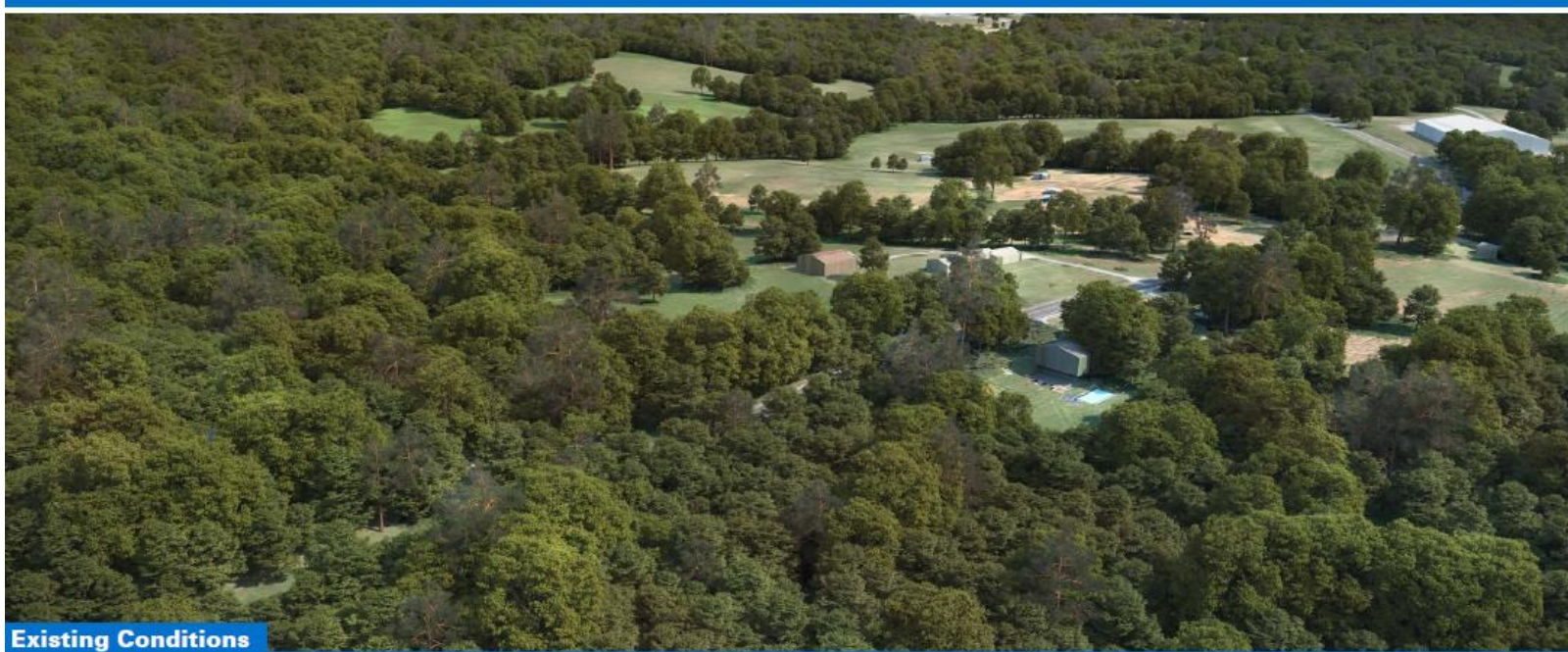
Structure Material:

Weathering Steel

Viewing Direction:

Southeast

Visualization is for discussion purposes only.
Final design is subject to change pending public,
engineering, and regulatory review.



Existing Conditions



Proposed Conditions

Finneywood - Jeffress

Aerial Rendering

Typical Structure:

120' - 2 Single Circuit
Monopoles

Right-of-Way Width:

120 Feet

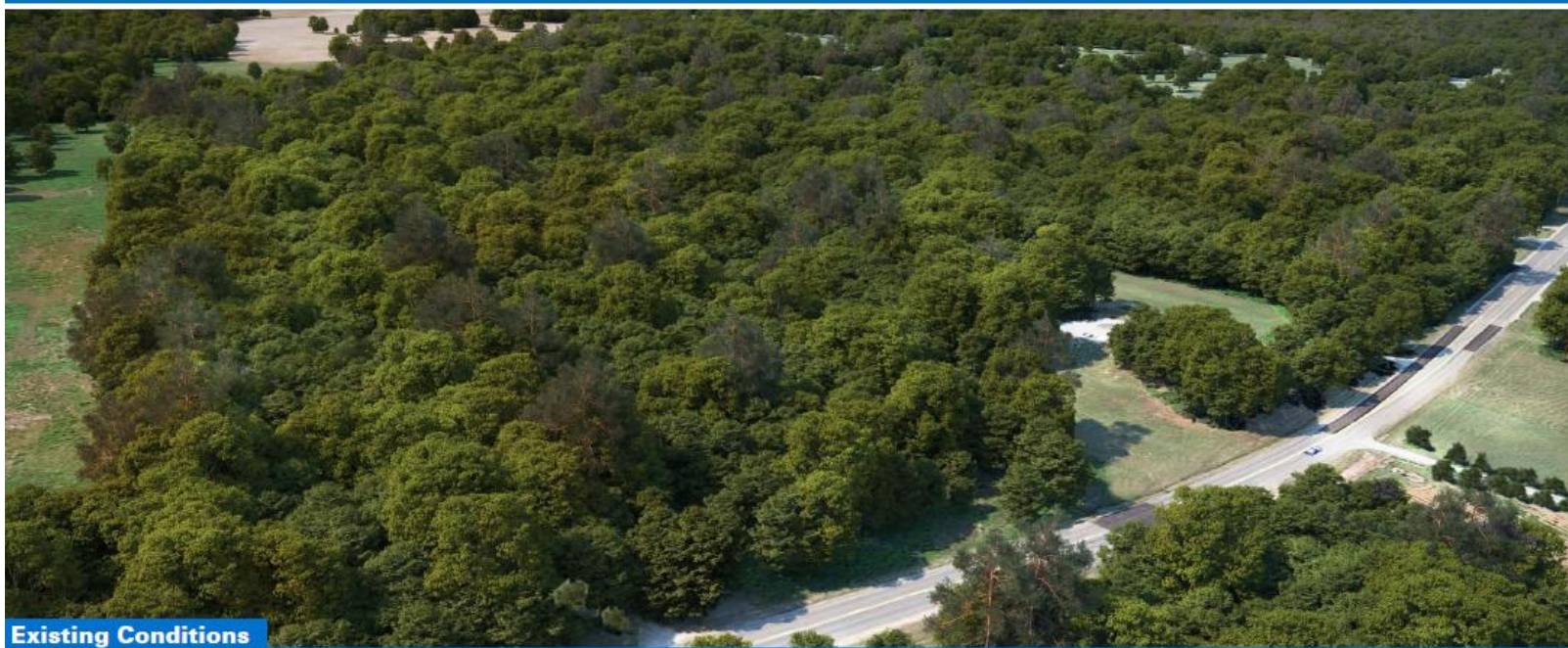
Structure Material:

Weathering Steel

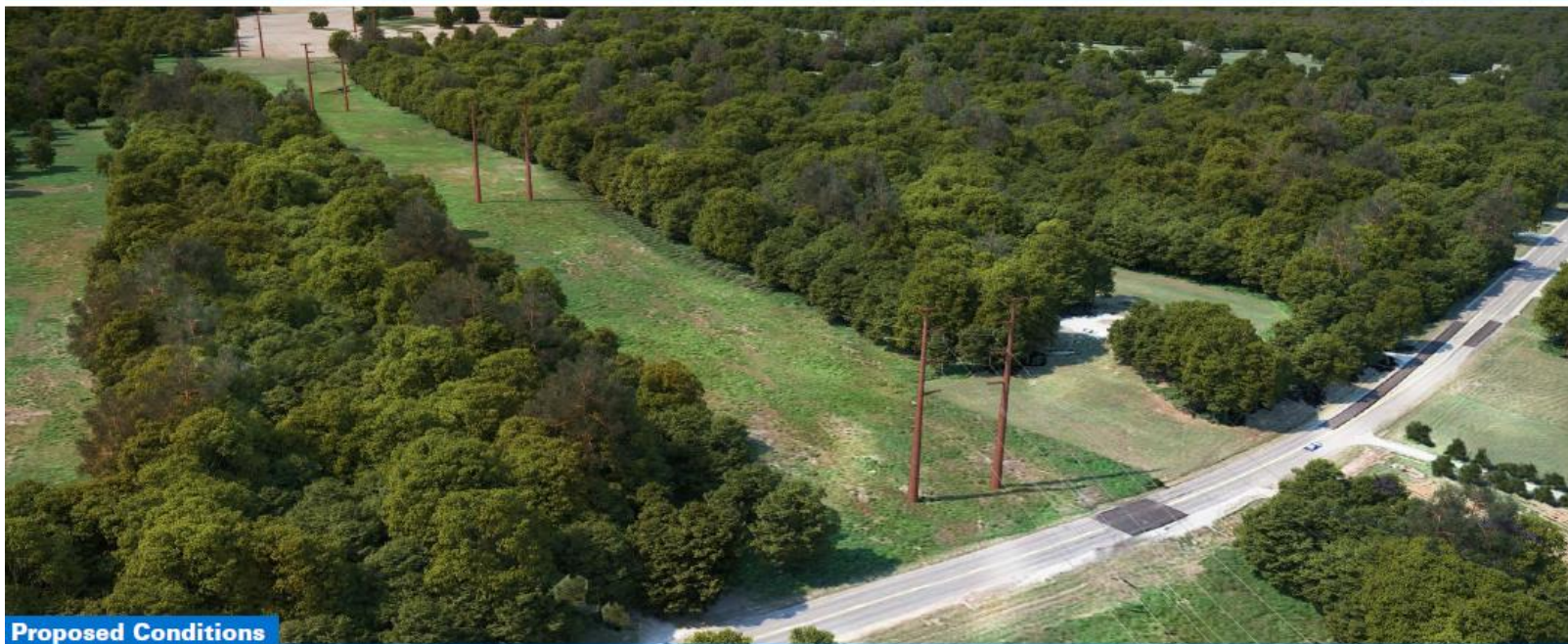
Viewing Direction:

Southeast

Visualization is for discussion purposes only.
Final design is subject to change pending public,
engineering, and regulatory review.



Existing Conditions



Proposed Conditions

Finneywood - Jeffress

Ground Rendering

Typical Structure:

120' - 2 Single Circuit
Monopoles

Right-of-Way Width:

120 Feet

Structure Material:

Weathering Steel

Viewing Direction:

West

Visualization is for discussion purposes only.
Final design is subject to change pending public,
engineering, and regulatory review.



Existing Conditions



Proposed Conditions

- **Virginia State Corporation Commission (SCC):** Certificate of Public Convenience and Necessity
 - Alternatives Analysis
 - Routing Study
 - Department of Environmental Quality Supplement and coordinated review
- **U.S. Army Corps of Engineers**
- **Other Agency Review**
 - Department of Environmental Quality (DEQ)
 - Virginia Department of Historic Resources (VDHR)
 - Virginia Department of Transportation (VDOT)
 - Virginia Marine Resources Commission (VMRC)
- **Local Permitting Requirements**
 - Jeffress Substation on Data Center property

Transmission Line Planning and Public Engagement Process

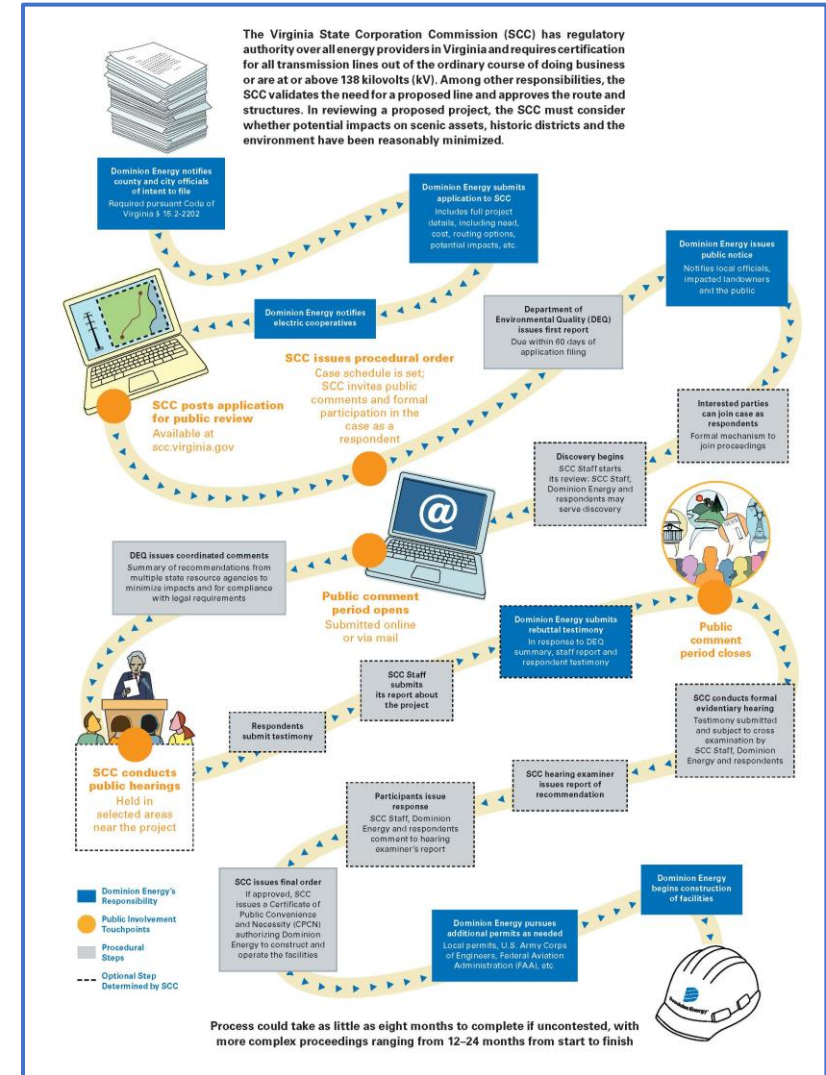
SCC Application



Opportunities for public involvement throughout the process, including public hearings

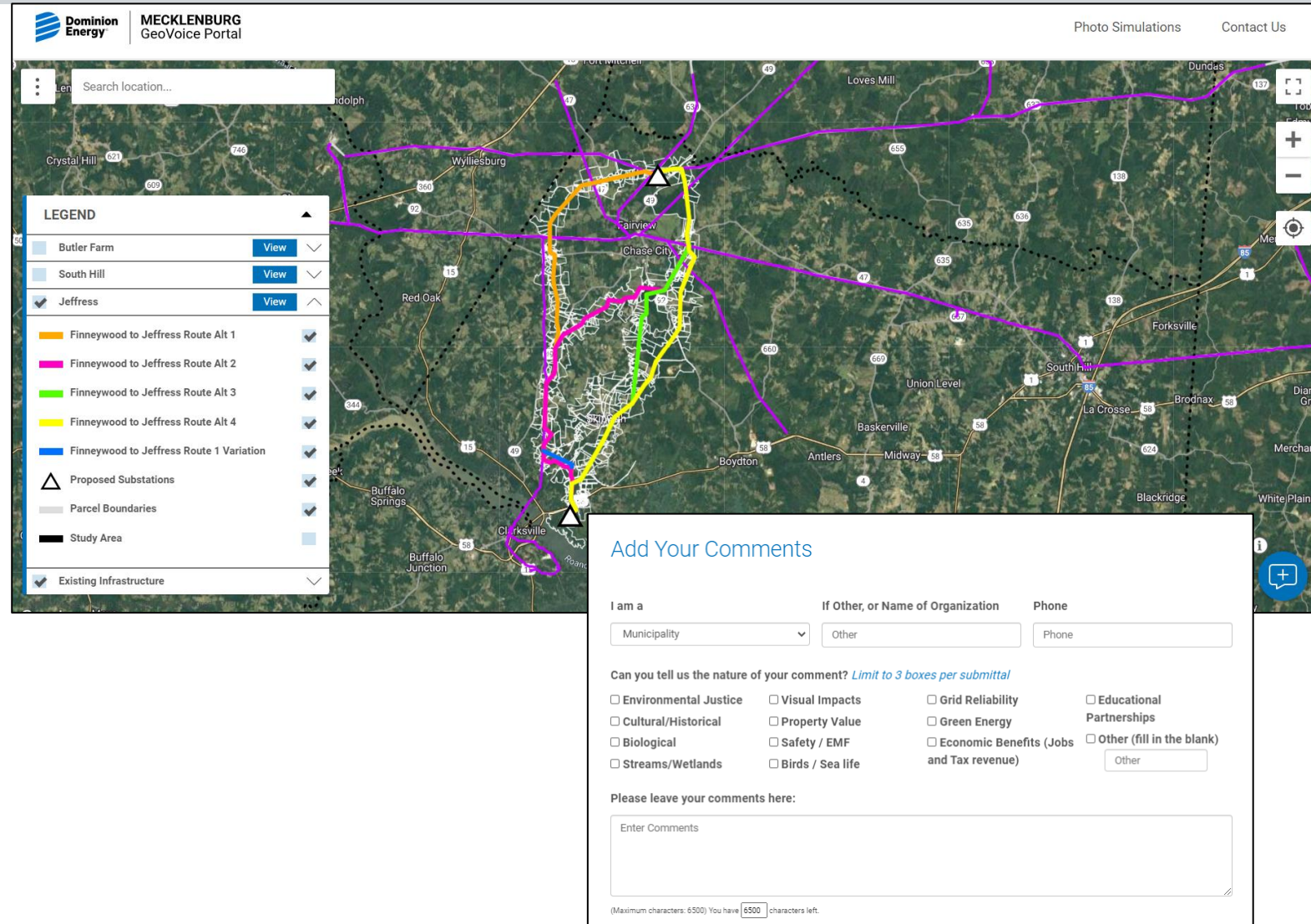


Process could take as little as eight months to complete if uncontested, with more complex proceedings ranging from 12–24 months from start to finish



DominionEnergy.com/jeffress

- Interactive mapping tool
- Review the study areas
- Add comments, provide input or share insight
- Evolves as routing options become available and are refined
- Track project development



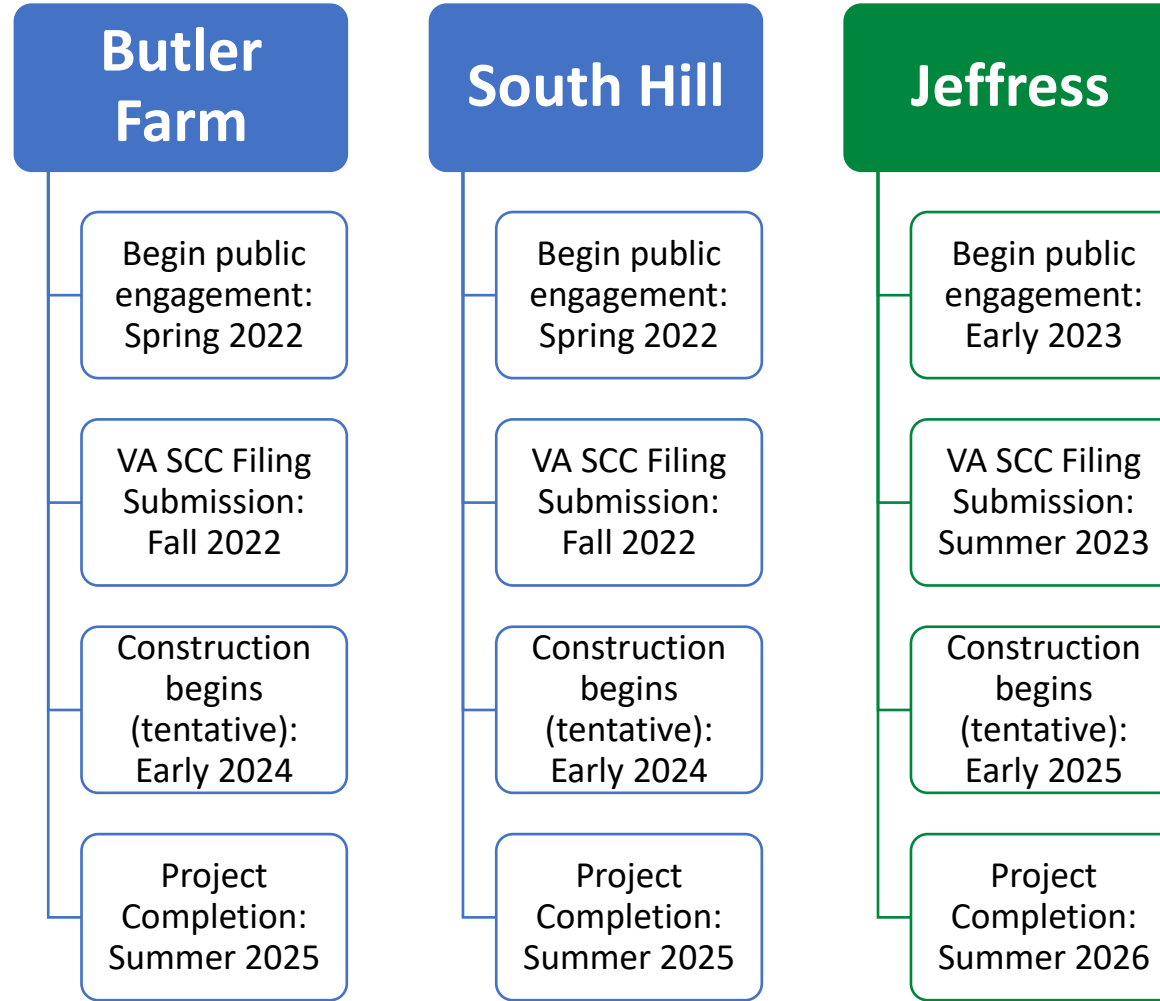
The screenshot displays the Dominion Energy GeoVoice Portal for Mecklenburg County. The interface includes a search bar at the top left, a legend on the left side, and a map showing various routing alternatives for the Jeffress project. The legend lists the following items:

- Butler Farm (View)
- South Hill (View)
- Jeffress (View)
- Finneywood to Jeffress Route Alt 1
- Finneywood to Jeffress Route Alt 2
- Finneywood to Jeffress Route Alt 3
- Finneywood to Jeffress Route Alt 4
- Finneywood to Jeffress Route 1 Variation
- Proposed Substations
- Parcel Boundaries
- Study Area
- Existing Infrastructure

The map shows several routing alternatives (Alt 1, Alt 2, Alt 3, Alt 4, and Variation) highlighted in different colors (orange, pink, green, yellow, and blue) over a satellite view of the area. A comment form is overlaid on the bottom right of the map, titled "Add Your Comments". The form includes fields for "I am a" (Municipality), "If Other, or Name of Organization" (Other), and "Phone" (Phone). Below these fields, there is a section for "Can you tell us the nature of your comment?" with a limit of 3 boxes per submittal. The options are:

- Environmental Justice
- Cultural/Historical
- Biological
- Streams/Wetlands
- Visual Impacts
- Property Value
- Safety / EMF
- Birds / Sea life
- Grid Reliability
- Green Energy
- Economic Benefits (Jobs and Tax revenue)
- Educational Partnerships
- Other (fill in the blank)

There is also a text input field for "Please leave your comments here:" and a character count at the bottom: "(Maximum characters: 6500) You have 6500 characters left."



What's Next?

- Review routing options and speak to subject matter experts
- Another in-person community meeting later this spring once public input is received and incorporated into project planning
- For questions throughout the project, send an email to powerline@dominionenergy.com or call **888-291-0190** and reference the “Jeffress 230” project while providing your property address and/or Parcel ID
- For more information and to access GeoVoice, please visit: [DominionEnergy.com/jeffress](https://www.dominionenergy.com/jeffress)



Thank you for joining!