

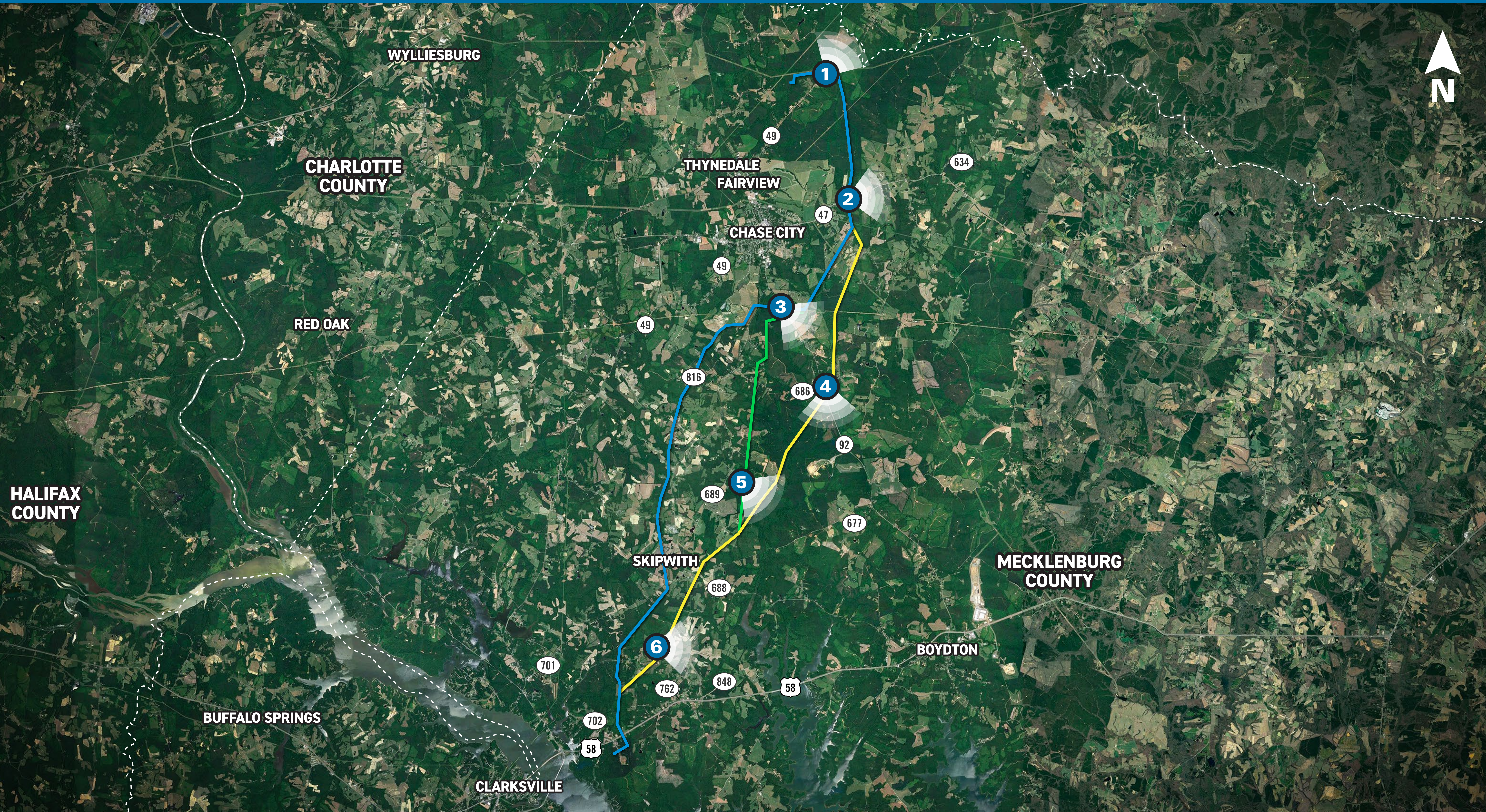
# FINNEYWOOD TO JEFFRESS

Transmission Line Project

## Photo Location Map



1 Viewpoint Location    — Route Alternative 3    — Route Alternative 4    — Route Alternative 5



# FINNEYWOOD TO JEFFRESS

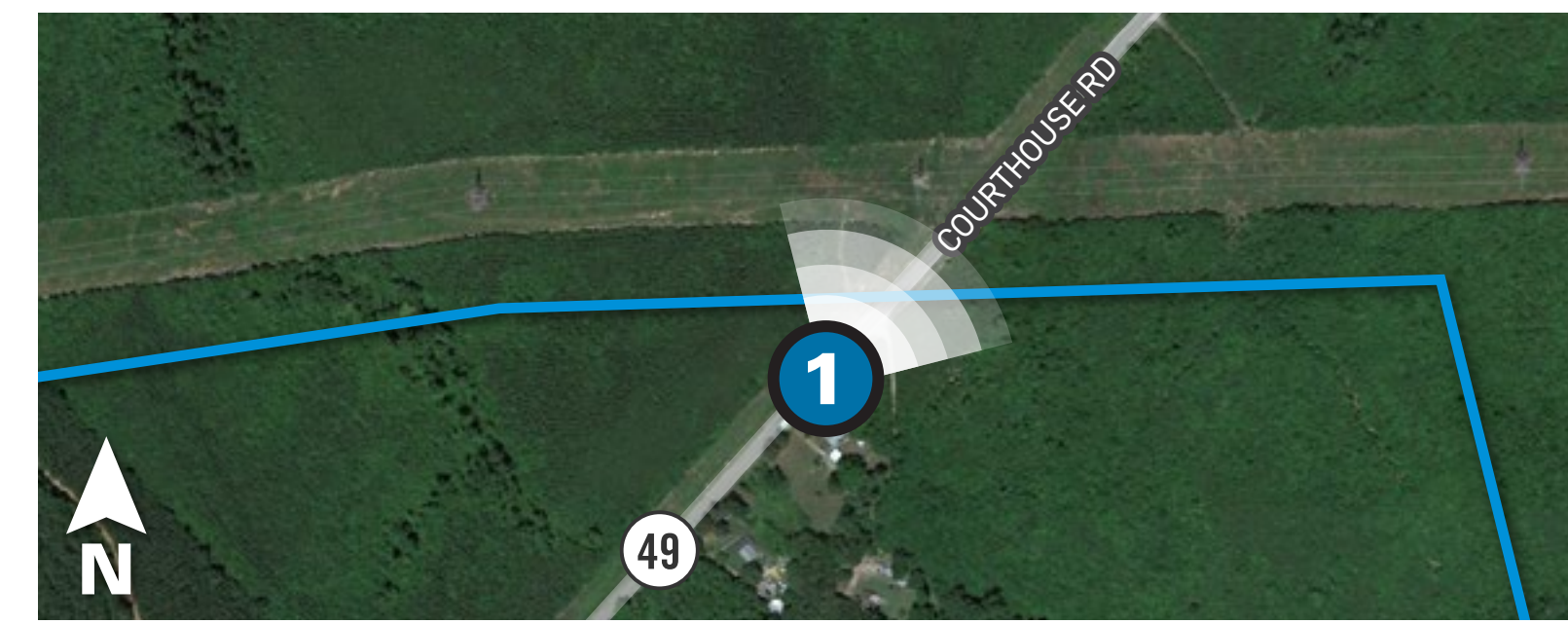
Transmission Line Project

## Viewpoint 1

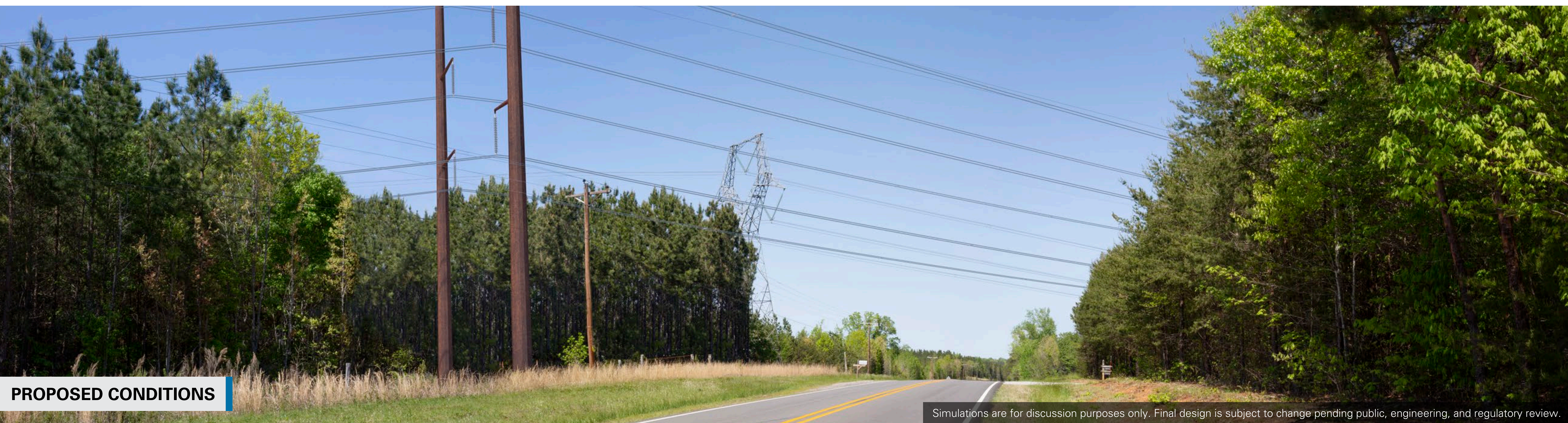
Date: 04/28/2022 Time: 2:23 pm Viewing Direction: Northeast

- ① Viewpoint Location
- Route Alternative 3
- Route Alternative 4
- Route Alternative 5

Note: At this location all three routes share the same alignment.



EXISTING CONDITIONS



PROPOSED CONDITIONS

Simulations are for discussion purposes only. Final design is subject to change pending public, engineering, and regulatory review.

# FINNEYWOOD TO JEFFRESS

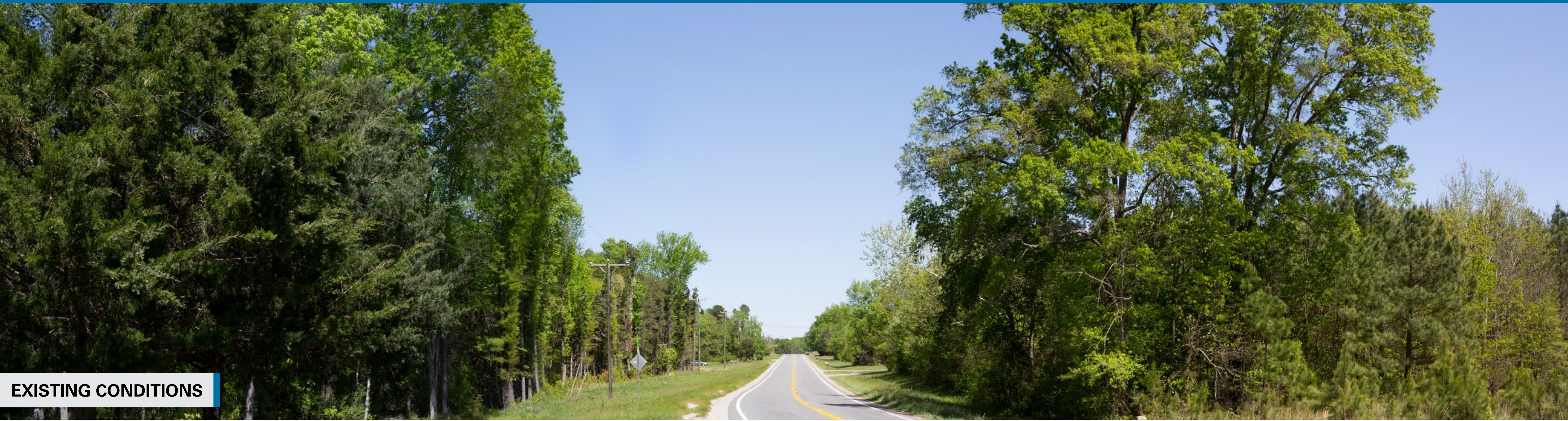
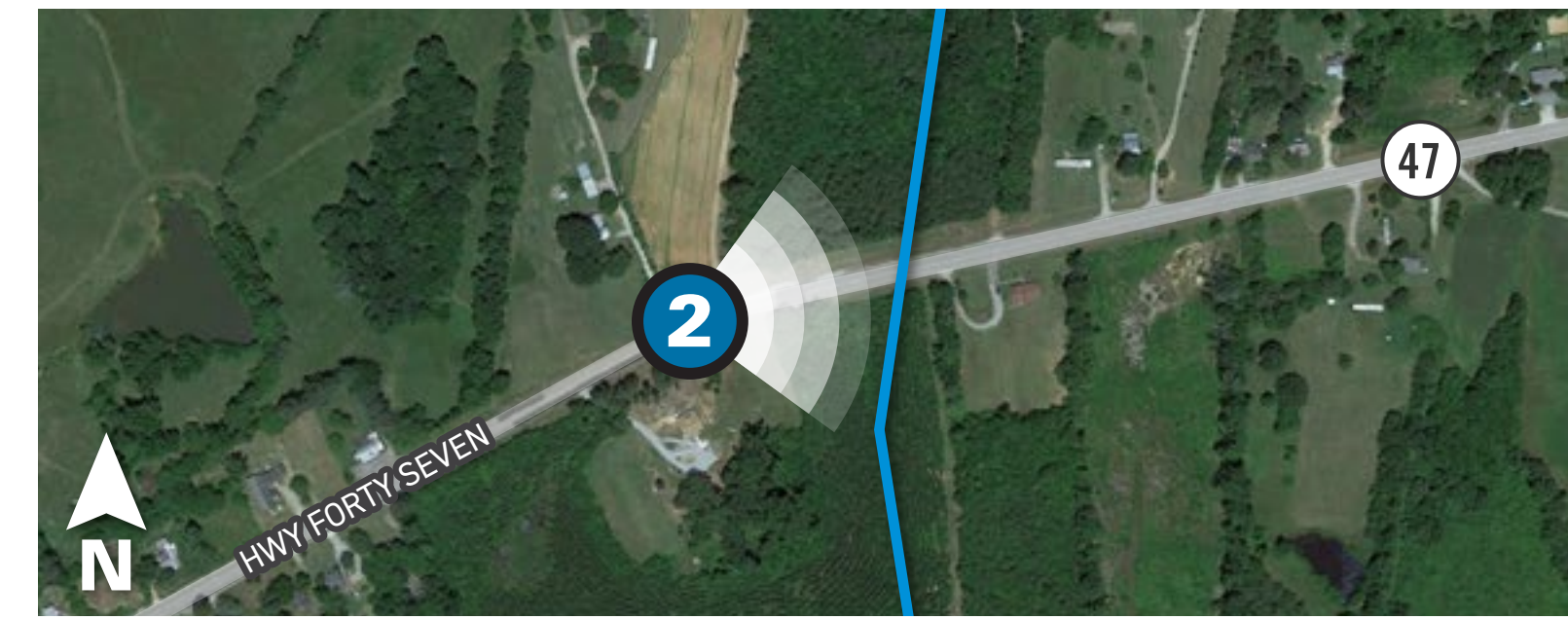
Transmission Line Project

## Viewpoint 2

Date: 04/28/2022 Time: 1:32 pm Viewing Direction: East

② Viewpoint Location    — Route Alternative 3    — Route Alternative 4  
— Route Alternative 5

Note: At this location all three routes share the same alignment.



EXISTING CONDITIONS



PROPOSED CONDITIONS

Simulations are for discussion purposes only. Final design is subject to change pending public, engineering, and regulatory review.

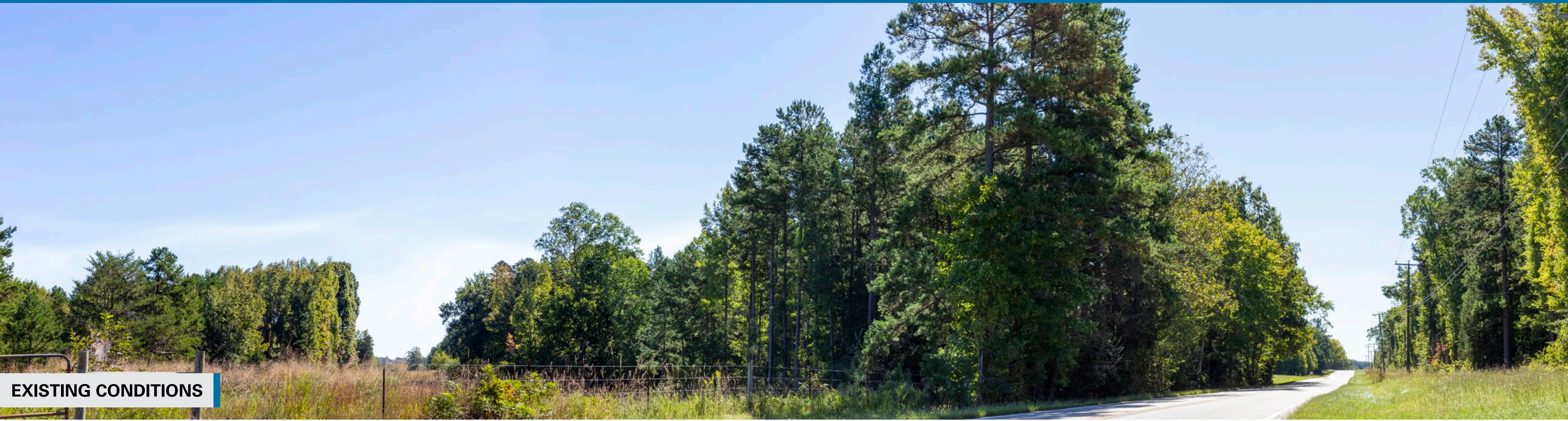
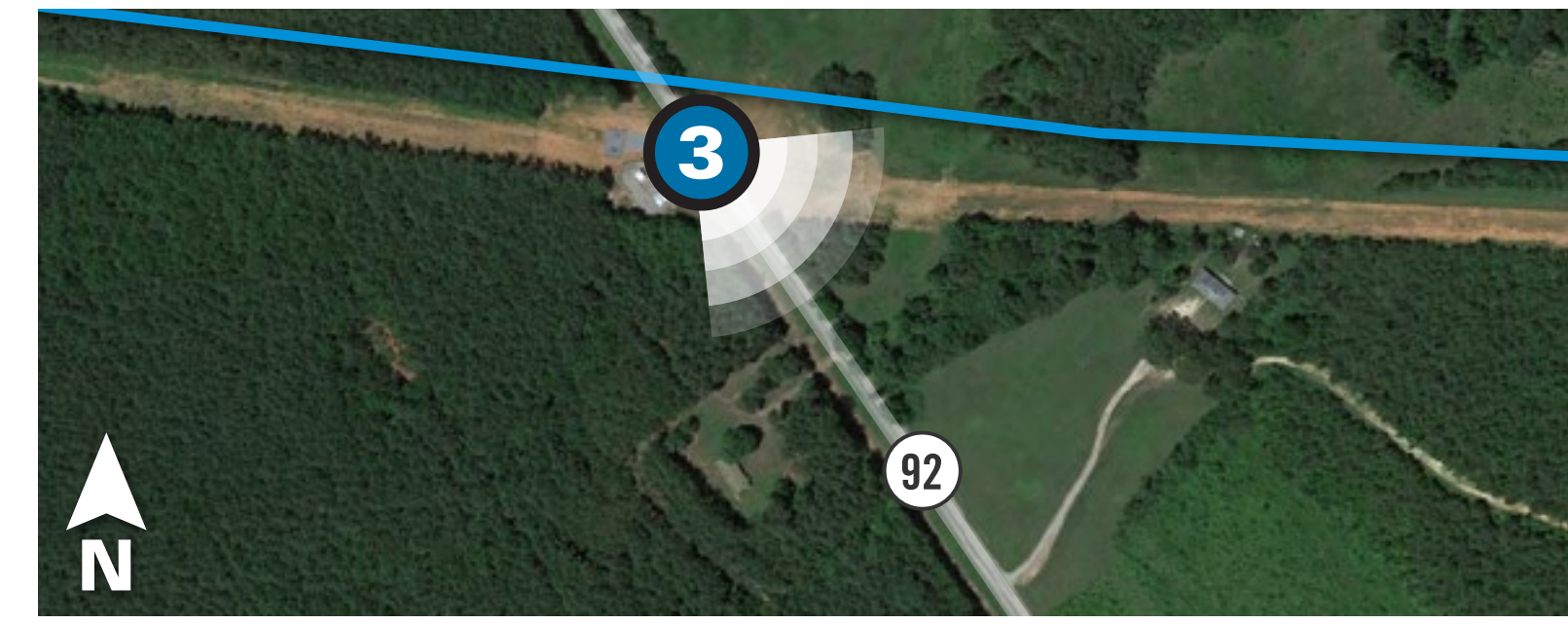
# FINNEYWOOD TO JEFFRESS

Transmission Line Project

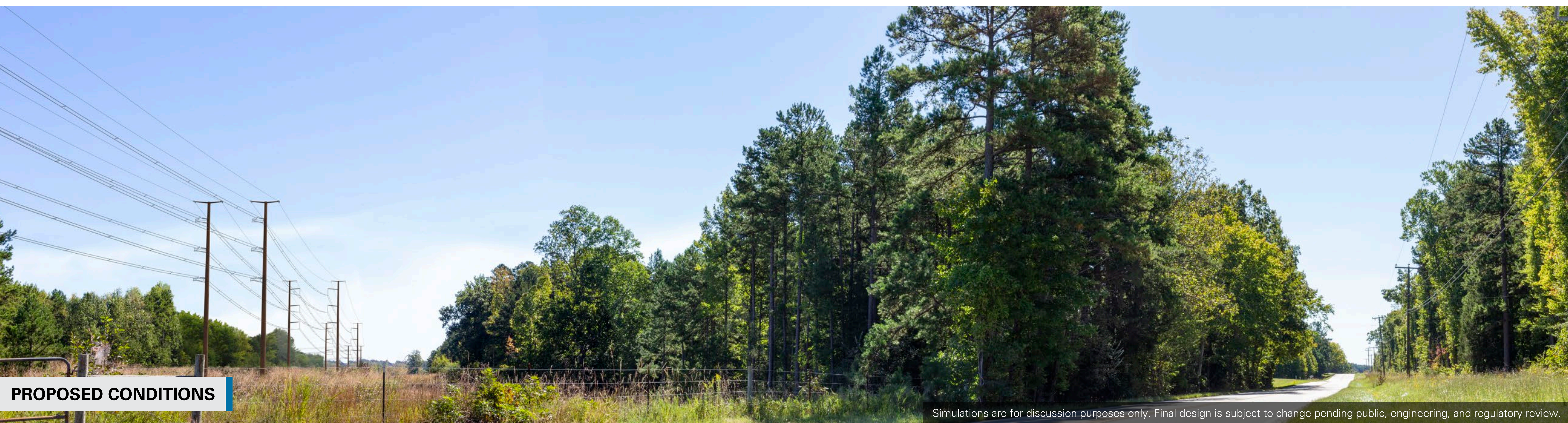
## Viewpoint 3

Date: 09/23/2022 Time: 9:56 am Viewing Direction: Southeast

③ Viewpoint Location — Route Alternative 5



EXISTING CONDITIONS



PROPOSED CONDITIONS

Simulations are for discussion purposes only. Final design is subject to change pending public, engineering, and regulatory review.

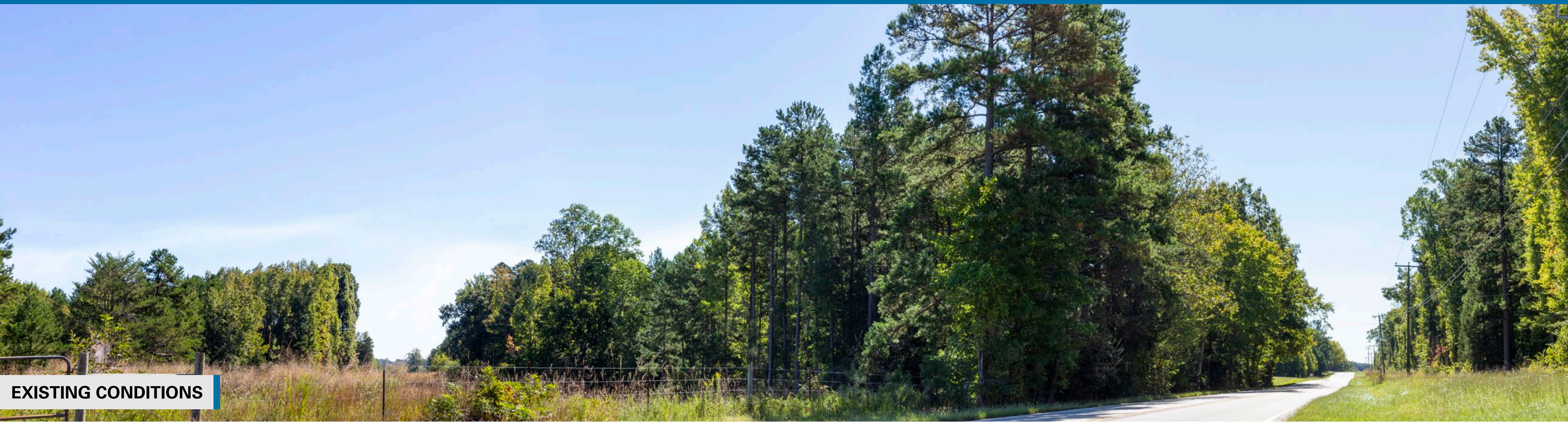
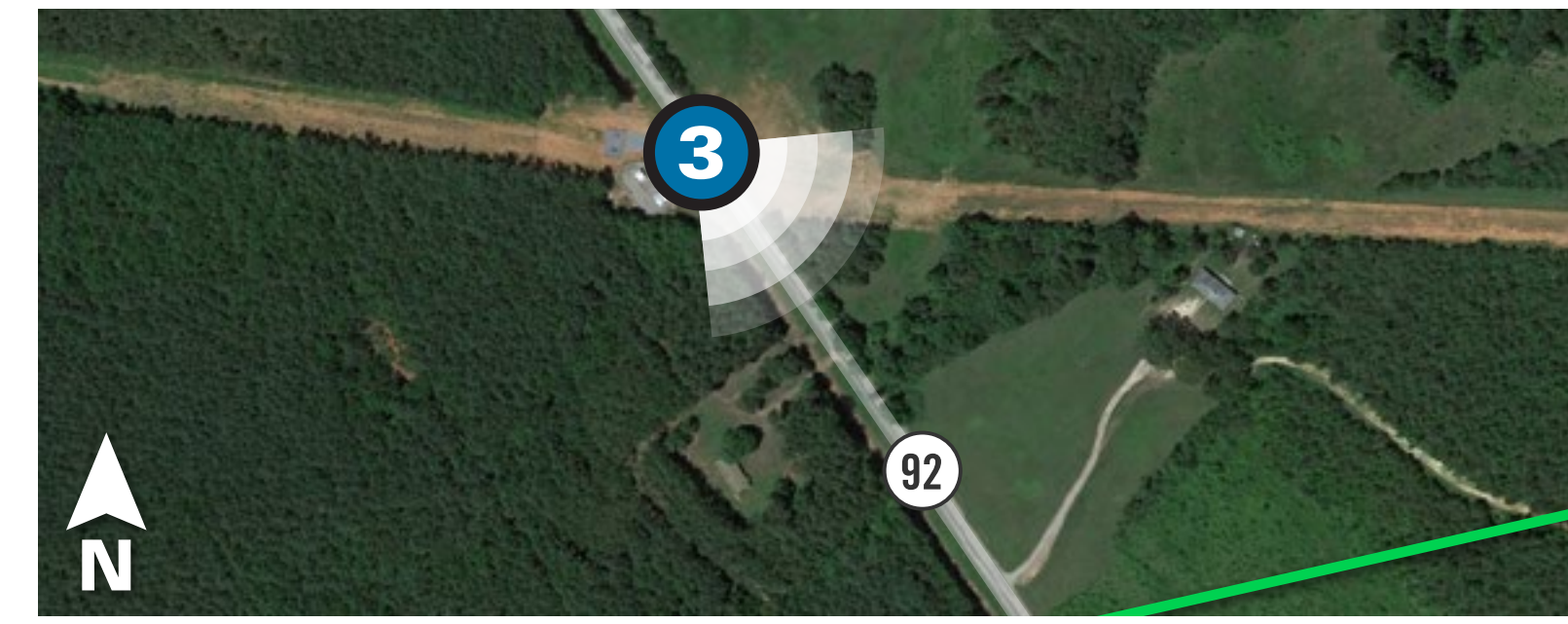
# FINNEYWOOD TO JEFFRESS

Transmission Line Project

## Viewpoint 3

Date: 09/23/2022 Time: 9:56 am Viewing Direction: Southeast

③ Viewpoint Location — Route Alternative 3



EXISTING CONDITIONS



PROPOSED CONDITIONS

Simulations are for discussion purposes only. Final design is subject to change pending public, engineering, and regulatory review.

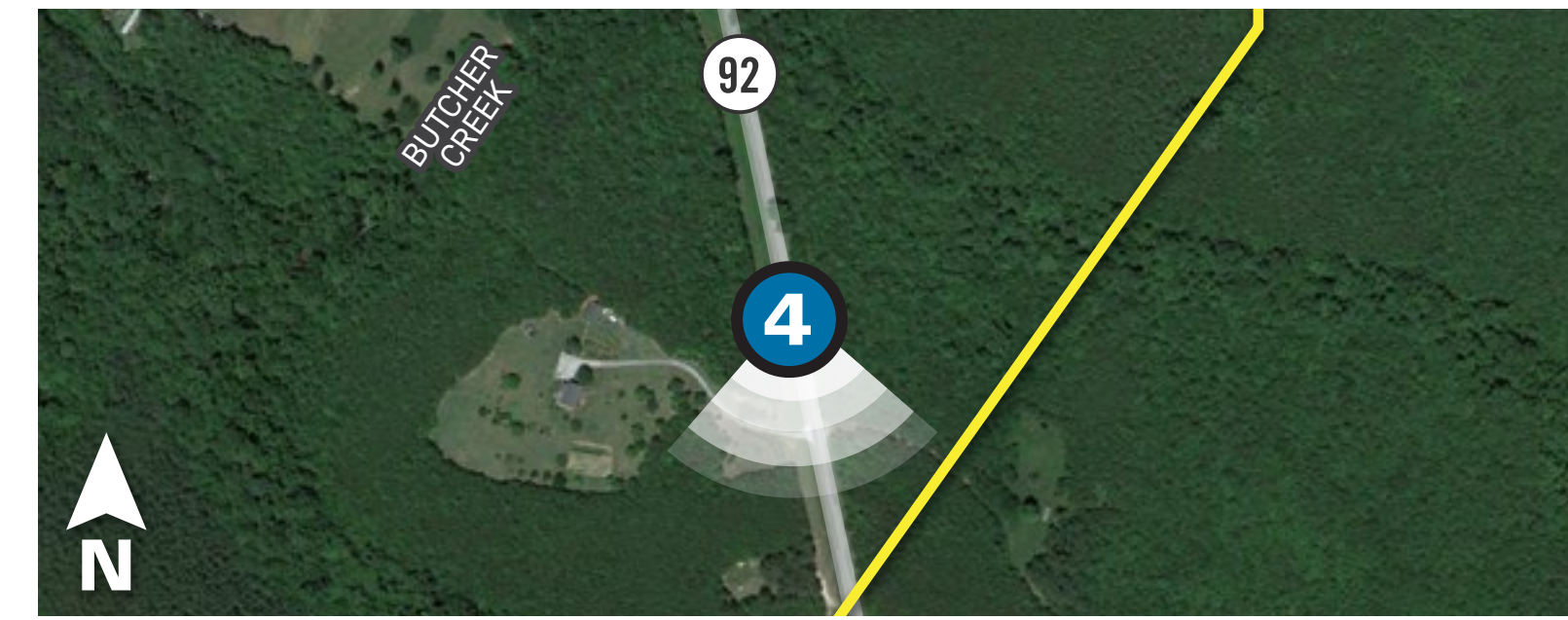
# FINNEYWOOD TO JEFFRESS

Transmission Line Project

## Viewpoint 4

Date: 09/23/2022 Time: 10:17 am Viewing Direction: South

 Viewpoint Location  Route Alternative 4



EXISTING CONDITIONS



PROPOSED CONDITIONS

Simulations are for discussion purposes only. Final design is subject to change pending public, engineering, and regulatory review.

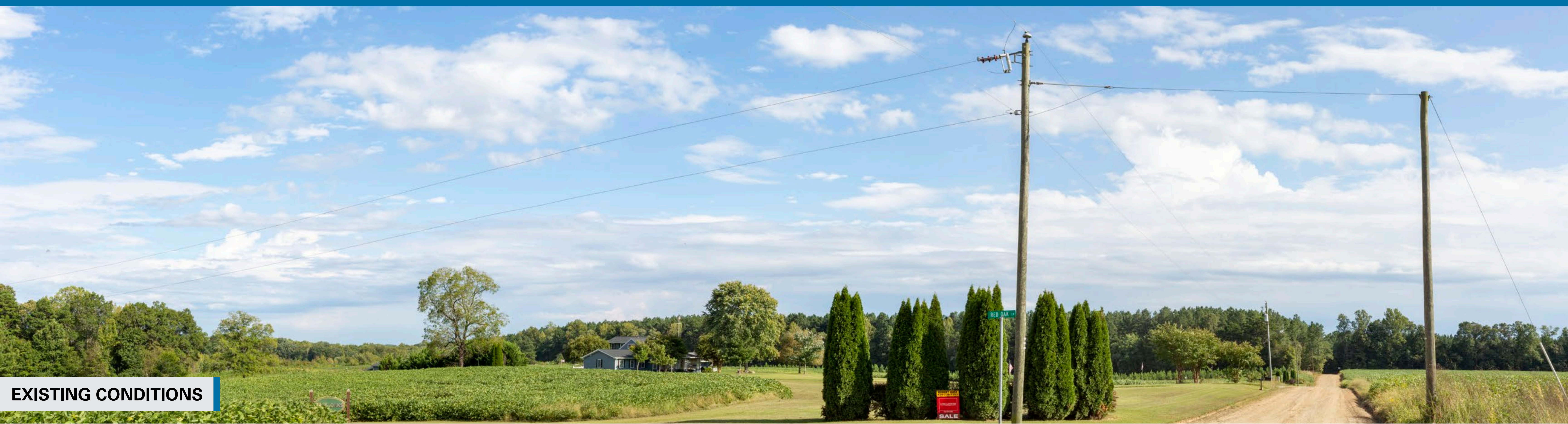
# FINNEYWOOD TO JEFFRESS

Transmission Line Project

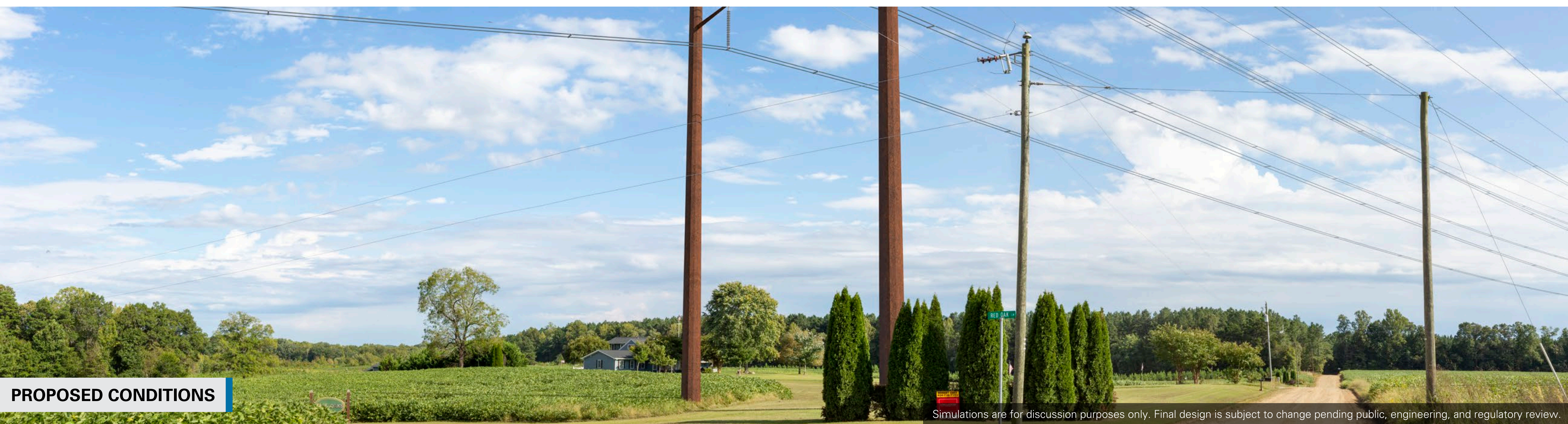
## Viewpoint 5

Date: 09/22/2022 Time: 3:09 pm Viewing Direction: Southeast

5 Viewpoint Location    — Route Alternative 3



EXISTING CONDITIONS



PROPOSED CONDITIONS

Simulations are for discussion purposes only. Final design is subject to change pending public, engineering, and regulatory review.

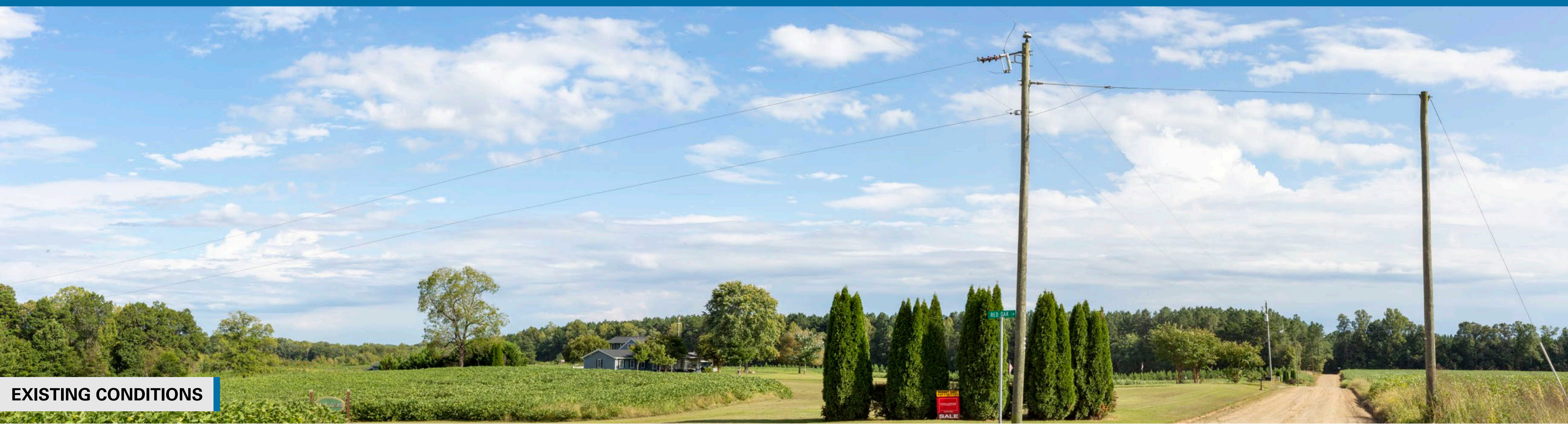
# FINNEYWOOD TO JEFFRESS

Transmission Line Project

## Viewpoint 5

Date: 09/22/2022 Time: 3:09 pm Viewing Direction: Southeast

5 Viewpoint Location — Route Alternative 4





# FINNEYWOOD TO JEFFRESS

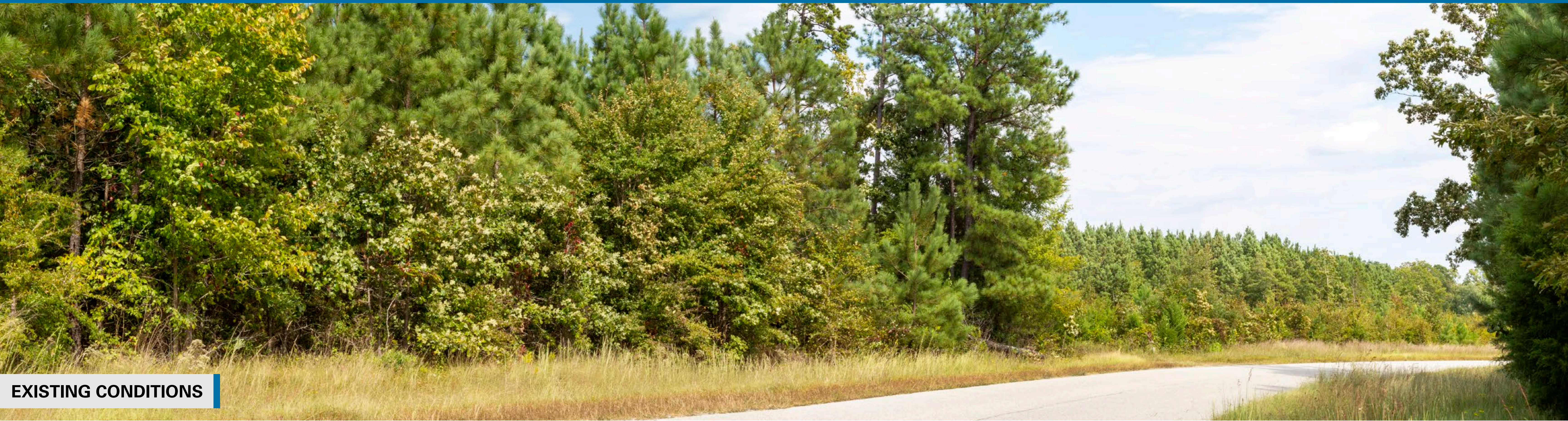
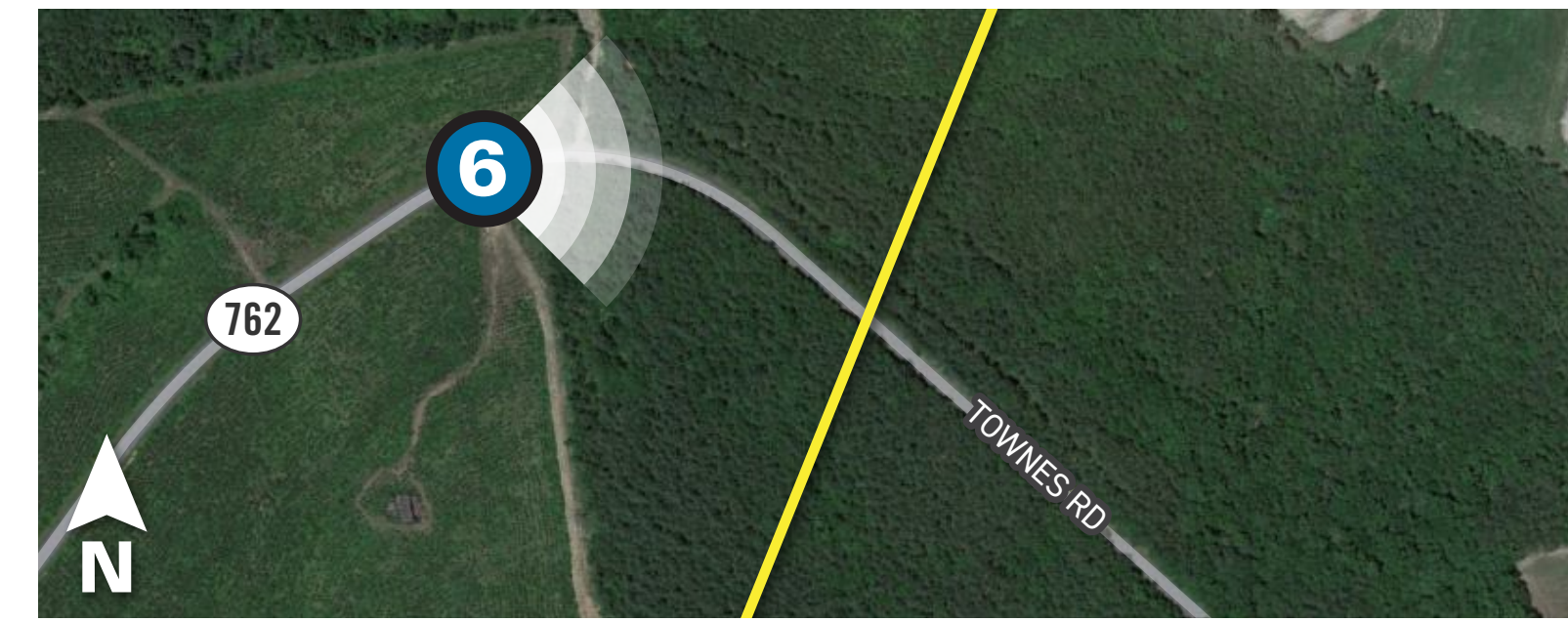
Transmission Line Project

## Viewpoint 6

Date: 09/22/2022 Time: 1:08 pm Viewing Direction: East

 Viewpoint Location  Route Alternative 3  Route Alternative 4

Note: At this location two routes share the same alignment.



EXISTING CONDITIONS



PROPOSED CONDITIONS

Simulations are for discussion purposes only. Final design is subject to change pending public, engineering, and regulatory review.