

**Welcome to the meeting!**  
**We're glad you're here!**

**Ladysmith-St. John's-Lee's Hill  
230 kV Electric Transmission  
Project**



**Dominion  
Energy<sup>®</sup>**

Powering Your Every Day.<sup>SM</sup>



# Project Overview



## Ladysmith-St. John's-Lee's Hill 230 kV Electric Transmission Project

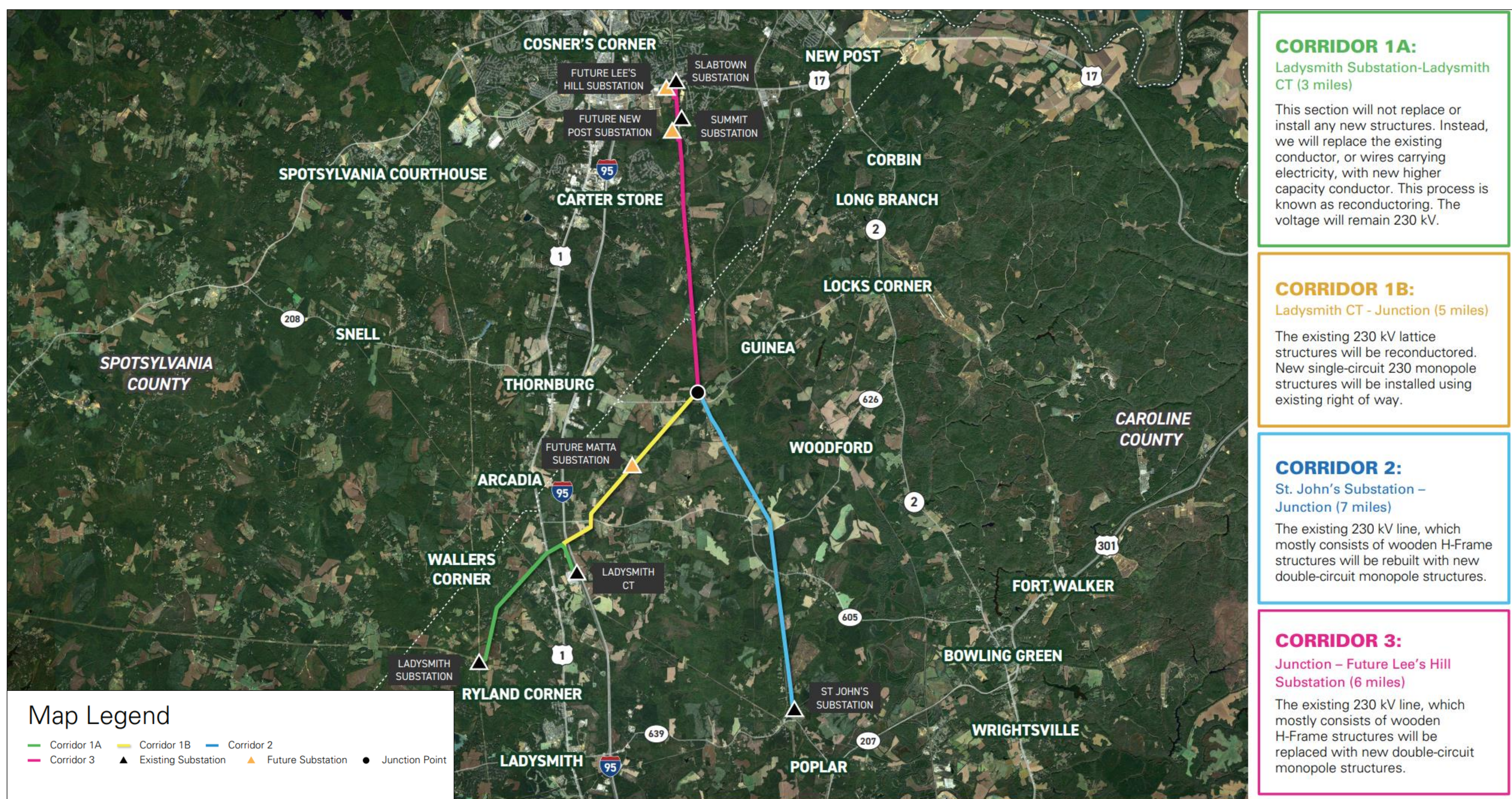
The Ladysmith-St. John's-Lee's Hill 230 kV Electric Transmission Project proposes to rebuild 230 kilovolt (kV) electric transmission lines in three right of way corridors.

The project will also add an additional 230 kV circuit.

This will allow us to meet the area's growing energy needs, continue providing reliable electric service, and maintain compliance with federal reliability standards. The total project length is approximately 21 miles. No new permanent right of way is required.

Three right of way corridors will be upgraded as part of this project:

- **Corridor 1:** Ladysmith Substation – Junction
- **Corridor 2:** St. John's Substation – Junction
- **Corridor 3:** Junction – Future Lee's Hill Substation





## Ladysmith-St. John's-Lee's Hill 230 kV Electric Transmission Project

<b>Summer 2024</b>	<ul style="list-style-type: none"><li>• Project announcement</li></ul>
<b>July 9, 2024</b>	<ul style="list-style-type: none"><li>• Community meeting</li></ul>
<b>Late Summer 2024</b>	<ul style="list-style-type: none"><li>• File application with the Virginia State Corporation Commission (SCC)</li></ul>
<b>Summer 2025</b>	<ul style="list-style-type: none"><li>• SCC ruling (anticipated)</li></ul>
<b>2025</b>	<ul style="list-style-type: none"><li>• Permitting</li><li>• Finalize engineering</li><li>• Pre-construction outreach</li></ul>
<b>Early 2026</b>	<ul style="list-style-type: none"><li>• Construction begins</li></ul>
<b>Summer 2028</b>	<ul style="list-style-type: none"><li>• Construction complete</li><li>• Work area restoration begins</li></ul>

This schedule is subject to change based on permitting, weather, etc.  
For the latest project timeline, visit our website:  
**[DominionEnergy.com/ladysmithleeshill](https://www.dominionenergy.com/ladysmithleeshill)**

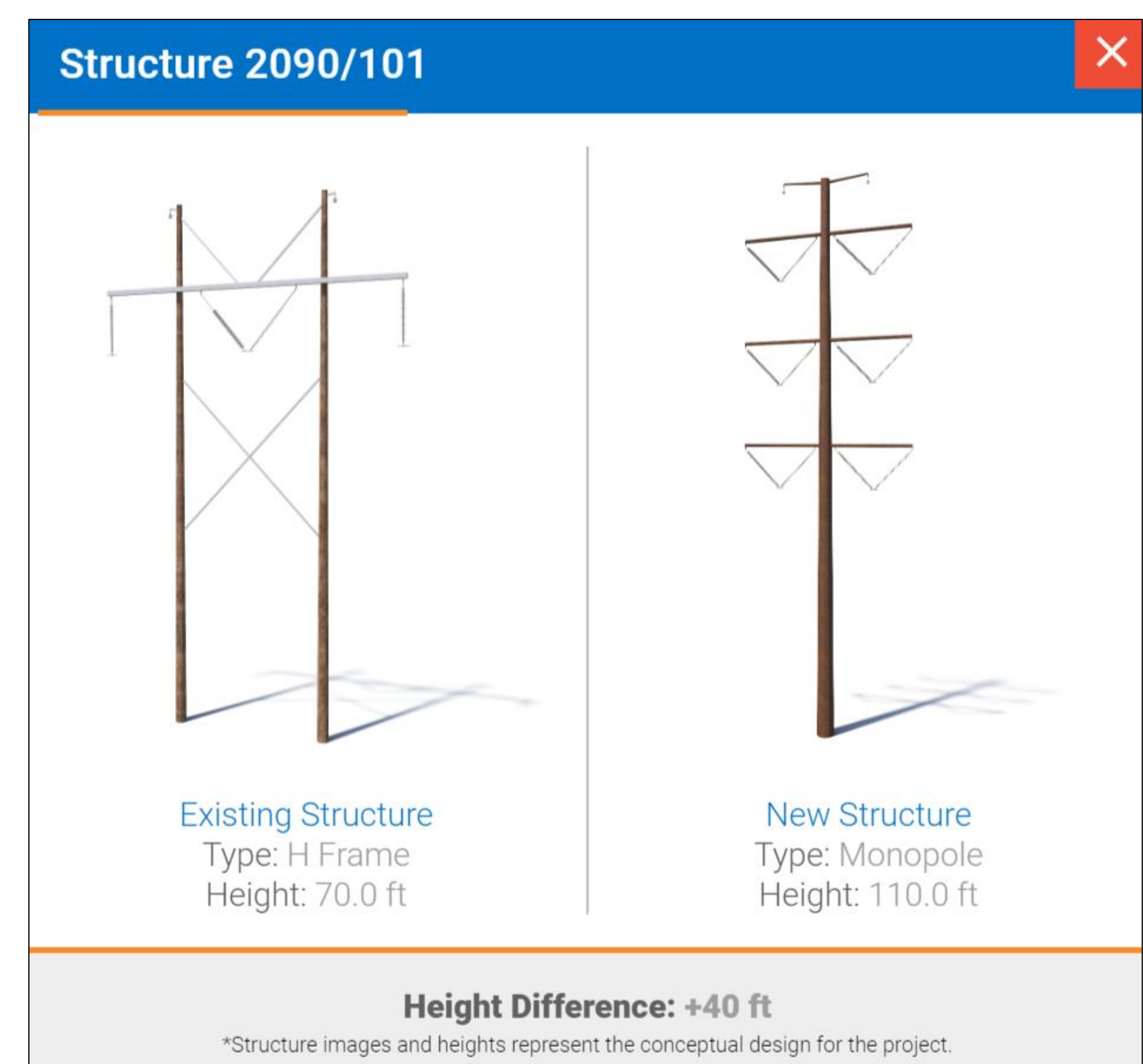
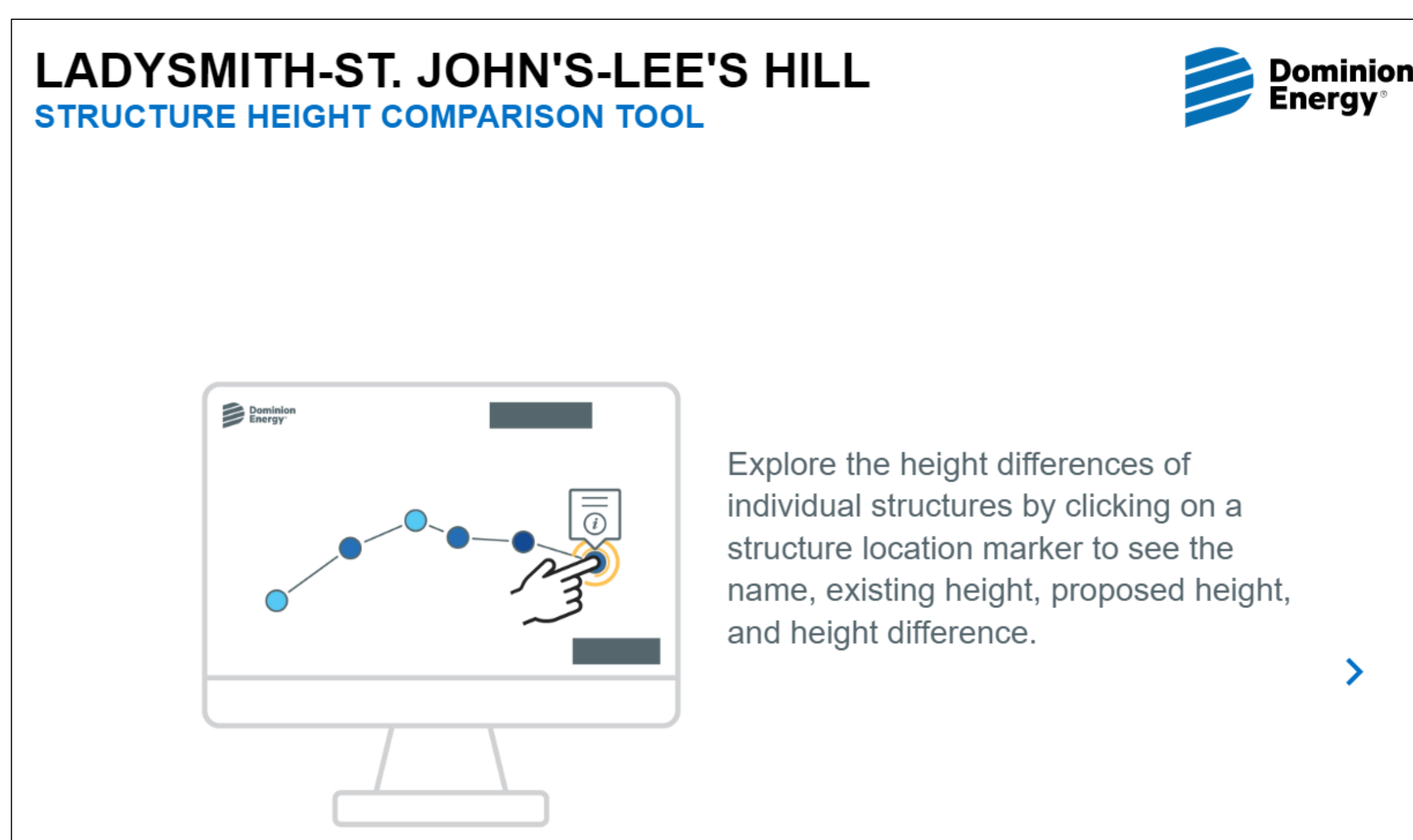
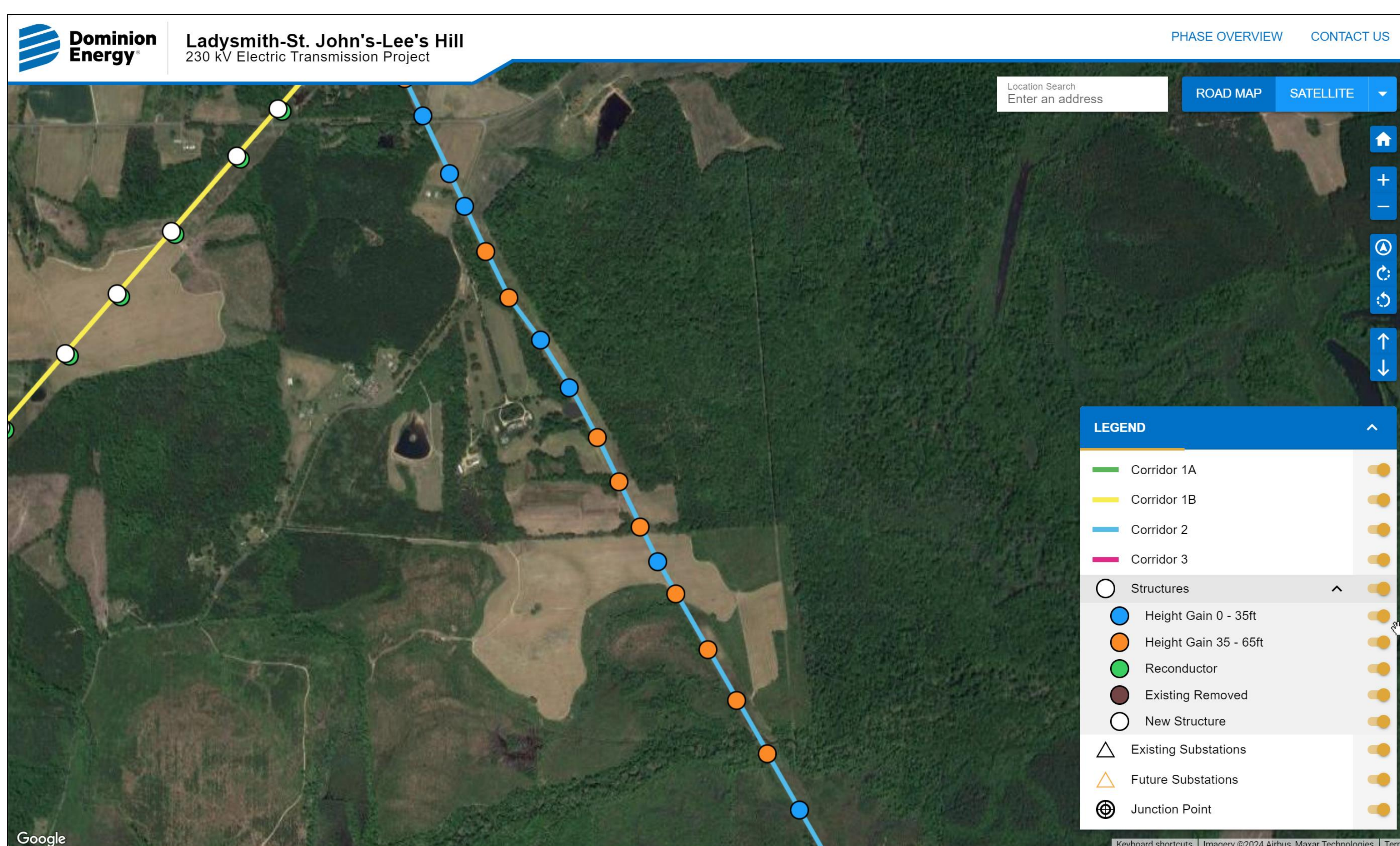


# Structure Height Comparison Tool



Interested in learning more about this project?  
Check out the interactive mapping tool on our project website.

- Zoom in on areas that matter to you, or search by typing in an address
- View both existing structures and simulations of proposed structures
- View changes for each individual structure



Access this tool on our website: [DominionEnergy.com/ladysmithleeshill](https://www.dominionenergy.com/ladysmithleeshill)