

Loudoun Reliability Engagement Group

Fifth Meeting Executive Summary Report

The fifth meeting of the Loudoun Reliability Engagement Group was held on March 21, 2022, from 11:00 AM to 1:00 PM at Founders Hall in Ashburn, VA.

Member Organizations in Attendance

- Bob Pollard, Loudoun County Preservation and Conservation Coalition
- Gem Bingol, Piedmont Environmental Council
- Jim Russell, Loudoun Habitat for Humanity
- John Mossgrove, NAIOP – Commercial Developers
- Jack McNamee, Loudoun Coalition of Homeowners and Condominium Associations (Alternate)
- Jim McWalters, Loudoun Wildlife Conservancy (Alternate)
- Lisa Campbell, Bike Loudoun (Alternate)
- Marc Raphael, Loudoun Coalition of Homeowners and Condominium Associations
- Mark Norman, Bike Loudoun
- Michael Myers, Loudoun Wildlife Conservancy
- Mitch Diamond, Loudoun County Preservation and Conservation Coalition (Alternate)
- Rachael Mai, Loudoun County Board of Supervisors - Michael R. Turner's Office (Alternate)
- Ted Lewis, Goose Greek Association

Absent Organizations

- Black History Committee (Friends of Thomas Balch Library)
- Fire Chief (Combined Fire & Rescue System)
- League of Women Voters of Loudoun County
- Loudoun Chamber of Commerce
- Loudoun County Department of Economic Development
- Loudoun County Department of Equity & Inclusion
- NAACP Loudoun Branch
- Rotary Club of Ashburn
- VA Asian Chamber of Commerce

Dominion Energy Team

- Brendon Shaw, External Affairs, Dominion Energy
- Carter Jones, ERM
- Greg Vozza, Power Engineer, MPR Associates
- Jake Rosenberg, ERM
- James Young, Environmental Specialist, Dominion Energy
- Jared Brandell-Douglas, ERM
- Jon Mulligan, Project Manager, Dominion Energy
- Kathleen Leonard, External Affairs, Dominion Energy
- Kristi Moore, ERM
- Laura Meadows, Electric Transmission Siting and Permitting, Dominion Energy
- Peggy Fox, Media and Community Relations Manager, Dominion Energy
- Rob Richardson, Electric Transmission Communications Consultant, Dominion Energy
- Tim Sargeant, Public Affairs, Dominion Energy

Meeting Summary

1. Introductions, Agenda Overview & Open House Recap

Kristi Moore kicked off the meeting just a few minutes after 11 a.m. by welcoming everyone and leading the group through introductions, a recap of the last meeting, and an agenda review.

Purpose of the LREG November LREG Meeting Recap

The Loudoun Reliability Engagement Group (LREG) is designed to allow participants to ask tough questions, challenge the project team and share their organizations' feedback and perspectives on the project.

November LREG Meeting Recap

Kristi reviewed the November LREG meeting content, including the Wishing Star to Mars SCC application debrief, PJM load forecasting, and Aspen to Golden study area map exercise.

2. Project Team Updates

PJM: Pennsylvania-New Jersey-Maryland Interconnection (PJM) is a regional transmission organization (RTO) that coordinates the movement of wholesale electricity in all or parts of 13 states and the District of Columbia.

PJM does:

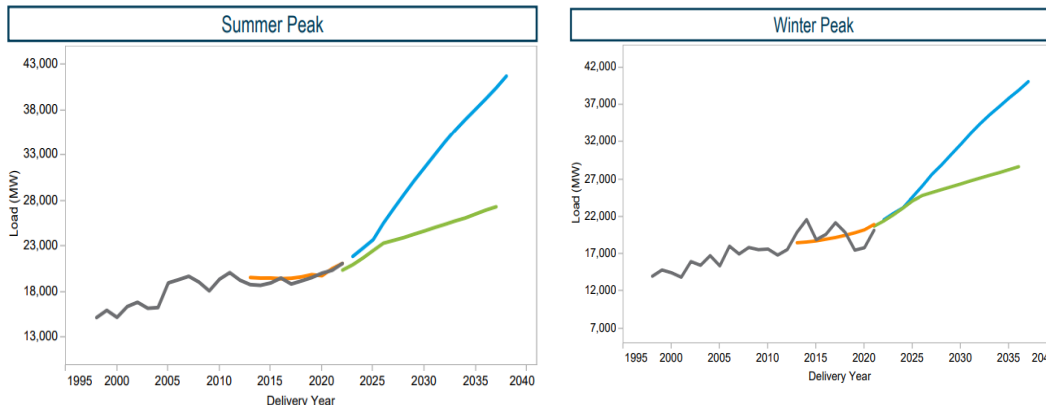
- Direct operation of the transmission system
- Maintain independence from members
- Coordinates maintenance of grid facilities

PJM does not:

- Own any transmission or generation assets
- Take ownership of the energy on the grid
- Perform work or maintenance on the energy grid
- Directly serve any end user

As we discuss the necessary infrastructure, it is important to note that PJM conducts its own independent study. The 2023 forecast expects the system's load to double in 20 years due to exponential growth in the area. To support the growth, Dominion Energy is proposing a series of right-of-way projects and upgrades.

2023 Load Forecast – Dominion Energy



PJM Discussion

QUESTIONS	ANSWERS
What changed in 2023 to increase the need?	The data center industry exploded. As a reminder, PJM forecasts and adapts how we look at large growth areas.
How far out will the current projects take us in terms of capacity?	We hope it will take us out to 2040. The proposed infrastructure will get us through. However, we will need additional substations and are proposing new reliability projects.

What is driving this demand growth?	PJM breaks it down in their report. Carter Jones agreed to share the public report with LREG members.
--------------------------------------------	-------------------------------------------------------------------------------------------------------

Wishing Star Open House Recap

The Wishing Star Open House was convened on March 15 from 5:00 p.m. to 7:00 p.m. at the Willowsford HOA. The Open House format allows residents to interact with Dominion subject matter experts to have their questions answered and concerns addressed.

Open house metrics include:

- 700 open house invitations mailed to nearby residents
- 13 community members attended
- Several display boards depicted substation site plans, renderings, and simulations.
- Attendees discussed various Loudoun County permits, tree-cutting activities, and a timeline for construction.
- Attendees were encouraged to leave comments and questions on GeoVoice

3. Wishing Stars to Mars SCC Application Update

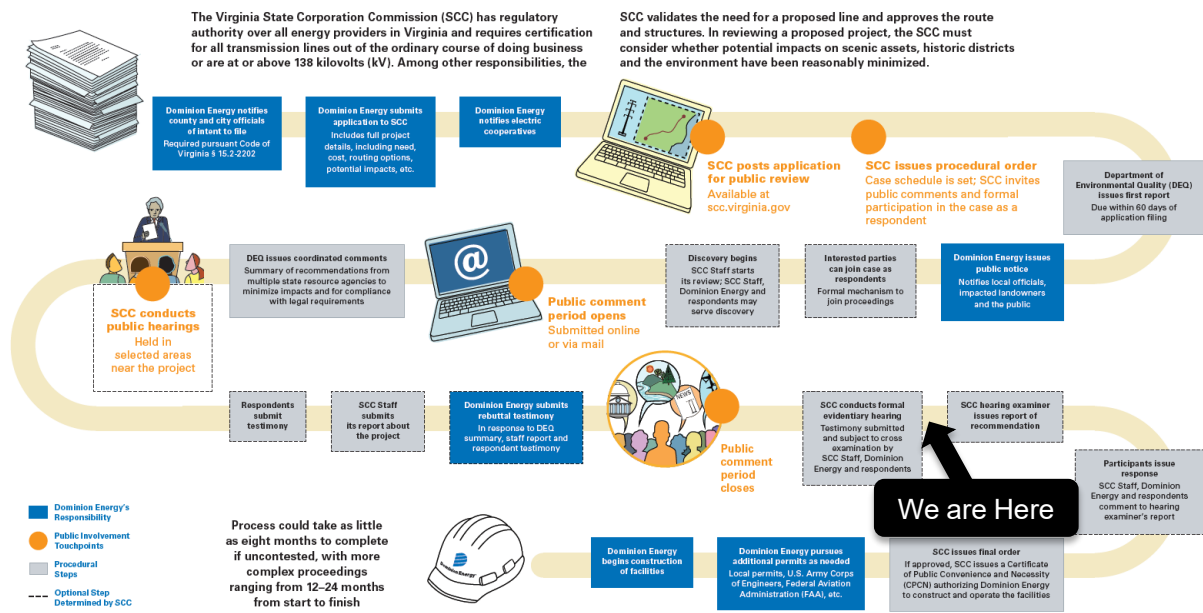
The SCC recommended route 5 on March 6, 2023. The LREG's invaluable involvement and feedback allowed for this to happen. The final order is expected at the end of April.

We wanted to share insights on how we got to the SCC approval process. We've mentioned several times our obligation to document our outreach and to show how we arrived at the routes submitted to the SCC. Not only do we show our communications outreach, including postcards, letters, open house reports, and LREG discussions, but we supplement that documentation with photo simulations and other visual representations.

Wishing Star to Mars SCC Application Discussion

QUESTIONS	ANSWERS
Does the SCC review Dominion's report?	Yes, they bring in state agencies to review the application.
Were there any material comments/responses by the SCC about the application?	There was one intervener who was concerned about the route running in front of her home. Upon speaking with her, we found she was basing her comments on outdated maps. After informing her of the new routes not running in front of her home, she was now open to the preferred route. Other than her comment, no other public or staff comments were submitted. All comments are captured in the hearing examiner's report.
Data centers should consider on-site micro storage	The technology is not there to support on-site micro storage.

Electric Transmission Line SCC Application Review Process



4. Aspen to Golden Routing Corridor Discussion

Jake Rosenberg displayed routing options in the Aspen to Golden study area.

Aspen to Golden Routing Discussion

QUESTION / COMMENT	ANSWERS
Bob Pollard: Will the new right-of-way project be collocated on an existing corridor?	No, the Aspen to Golden transmission line project will be new right-of-way/
How much power will the new infrastructure carry?	It'll be a 500kv/230kv line. Currently, there isn't enough capacity to meet the need of the area. As a reminder, all infrastructure benefits all customers; we do not dedicate facilities for individual customers.
Marc Raphael: Is there a heat map for power constraints?	Jake: Planning has something similar
Jake: These are a series of projects to make a 500/230 loop from Belmont Ridge Road to data center alley.	In November, we discussed routing opportunities and project area constraints. Options: Dulles Greenway and W&OD Trail <ul style="list-style-type: none"> Dulles Greenway: Private owned, homes abutting, park crossing, crossing more 230kv Lines. Longer route W&OD Trail: Up to 70-80 homes would be in the potential Right of Way. The narrow right-of-way for 500/250 Lines
Jake McNamee: Get easement for the future line along Dulles Greenway.	Jake Rosenberg: We are talking with toll operators, but hard to do without an Imminent project
Jack Hanna: The community does not want transmission lines along route 7.	
Jim Russell: Gateway option has chokepoints at the ends to connect to the ends of the line.	

Bob Pollard: SCC has authority over routing, not Loudoun County board, yes?	Rob Richardson: Board of Supervisors has influence, not direct authority.
Coordination with data centers to preserve creek buffers and limit impacts to the surrounding area.	We are looking at the best way to cross Goose Creek. Four proposed substations on the east side of Goose Creek serve data centers.
Why not look at Belmont Ridge Road?	The building setbacks are reduced, and we are trying to keep the buffer along Belmont Ridge Road.
Generally, how many acres is a substation?	Substations are typically 5-6 acres. Substation transmission structure heights are typically 140-160ft.

Following the discussion, members discussed the desire to comment on the study area using a mapping and comment platform. Jake Rosenberg agreed to share a tool for LREG members to look at the study area without routes and to place comments on the platform that other LREG members can access.

5. General Questions and Answers

QUESTIONS	ANSWERS
Mark Norman: What comes first? Data centers or Powerlines?	Rob Richardson: Dominion Energy has an obligation to serve. Forecasts help to predict where the demand will be.
Bob Pollard: Regulatory authority over transmission project and data center zoning	Rob Richardson: Zoning dictates where data centers can be located. Jake Rosenberg: Loudoun County’s last full zoning update in 1993, data centers have a by-right or use-permit. Rachel Mai: The county has by-right zoning for data centers and proffer by-right. The board does control zoning but has hands tied by existing zoning.
Does the County require the data centers to locate utilities on their property?	
Is there a figure that shows the areas in Loudoun County that are the most power-constrained to help County Supervisors inform land use decisions?	

Belmont Ridge Road at Route 7 segment

QUESTION / COMMENT	ANSWERS
Gem Bingol: Topography near the creek is difficult for engineering.	
Marc Raphael: Why not along Belmont Ridge Road?	It is an option but has other trade-offs.
Jake Rosenberg: Major constraints include:	Goose Creek, Belmont planned community, Belmont cemetery, viewshed easement at Belmont Manor, heavy development along Route 7.

Keep the Line straight or as close to along Route 7.	Looking at corridors along the north and south at Route 7.
Mitch Diamond: <i>Historical and Cultural Sites near route 7 at Goose Creek</i>	
Bob Pollard: <i>Is the 150 ft along Route 7 for this line?</i>	Yes
Bob Pollard: <i>When is the filing date?</i>	Rob Richardson: Fall of 2023