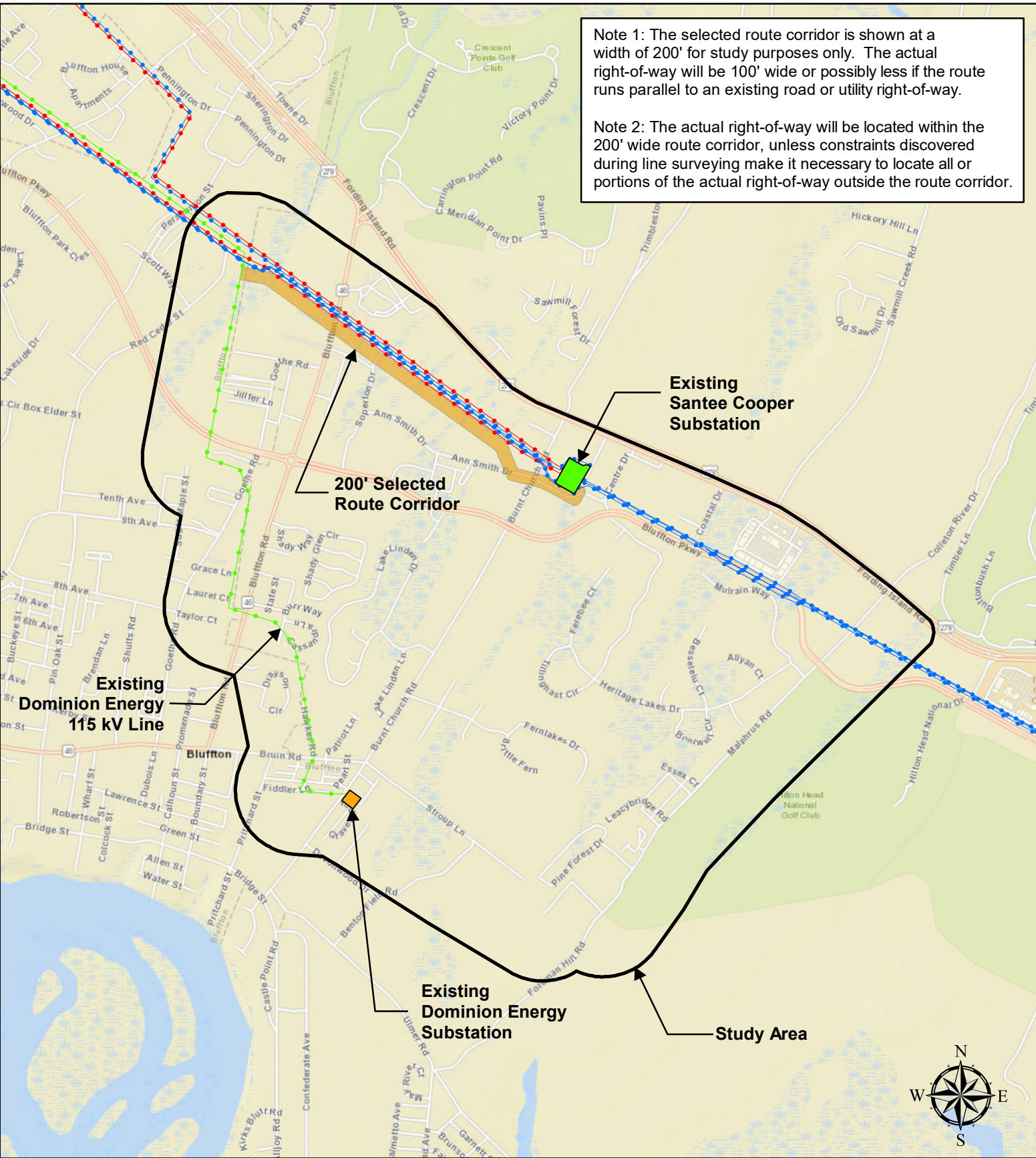


Note 1: The selected route corridor is shown at a width of 200' for study purposes only. The actual right-of-way will be 100' wide or possibly less if the route runs parallel to an existing road or utility right-of-way.

Note 2: The actual right-of-way will be located within the 200' wide route corridor, unless constraints discovered during line surveying make it necessary to locate all or portions of the actual right-of-way outside the route corridor.



- Existing Dominion Energy 115 kV Line
- Existing Santee Cooper 115 kV Line
- Existing Santee Cooper 230 kV Line
- Existing Dominion Energy Substation
- Existing Santee Cooper Substation
- 200' Selected Route Corridor
- Study Area Boundary

Selected Route Corridor
For the Future
Okatie - Bluffton 115 kV Tie
Beaufort County, South Carolina

