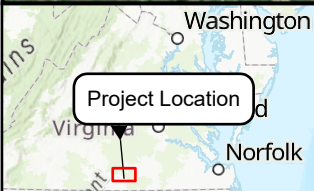
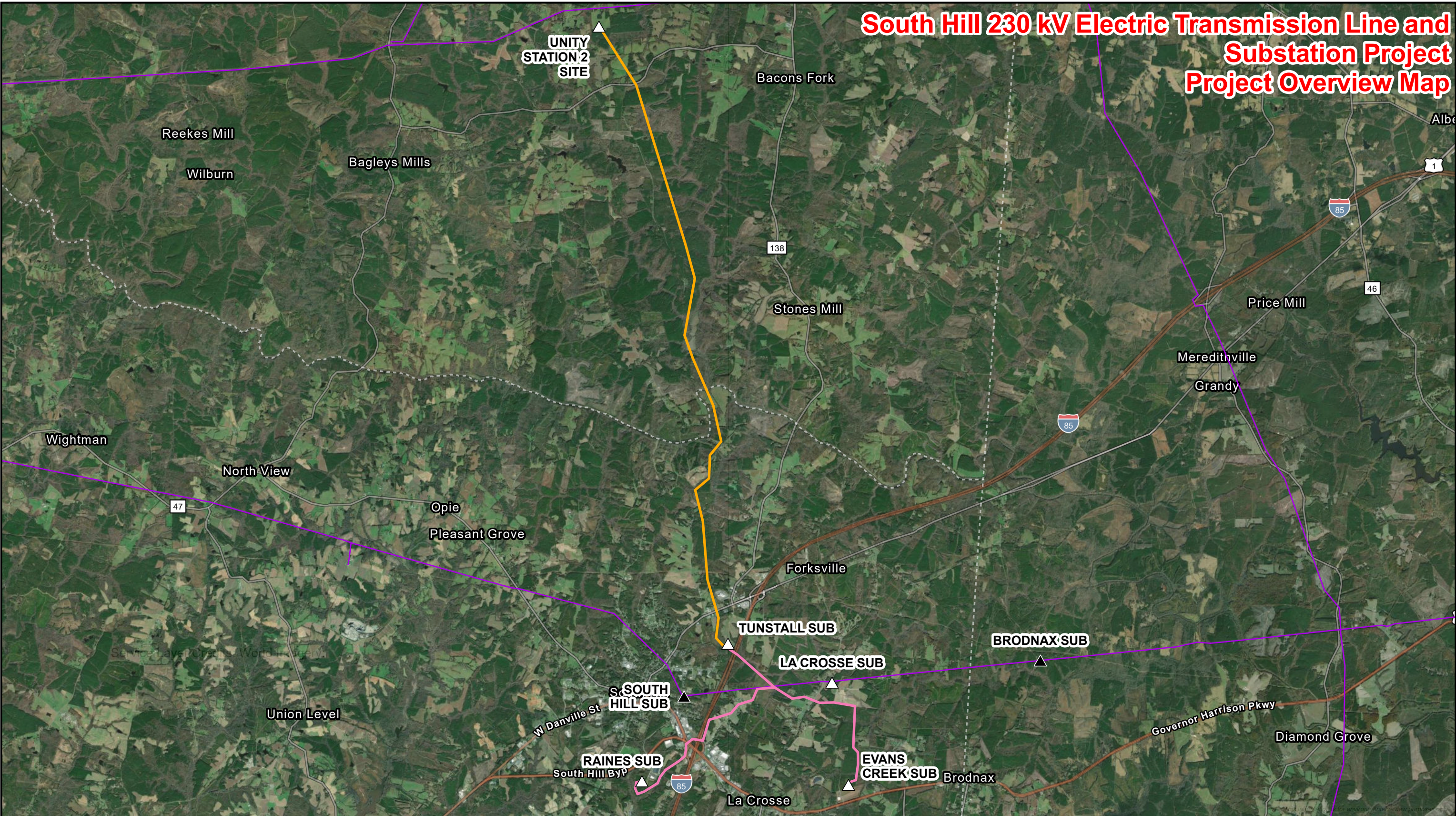


South Hill 230 kV Electric Transmission Line and Substation Project Project Overview Map



| | | |
|---|--|---------------------------------------|
| <ul style="list-style-type: none"> ▲ Existing Substation/Switching Station △ Proposed Substation/Switching Station — Existing Dominion Transmission Line | <ul style="list-style-type: none"> — SCC Approved Route (Unity Route 2) — SCC Approved Interconnect Route (Interconnect Route 1) | <p>0 0.5 1 Miles 1:96,000</p> |
|---|--|---------------------------------------|

Project Overview
South Hill 230 kV Electric Transmission Line and Substation Project
 Dominion Energy Virginia
 Lunenburg and Mecklenburg Counties