



Dominion Energy image. Not project specific.

Electric Transmission
P.O. Box 26666
Richmond, VA 23261



Actions Speak Louder

**Local Power Line Project
Information Enclosed**

IMPORTANT

Danger Tree Surveying

Tarboro to Hathaway 230 kV and Partial 115 kV Electric Transmission Line Rebuild Project

Use your iPhone camera or the QR reader app on other smartphones to visit the project page on our website.



AT DOMINION ENERGY, we are committed to continually reviewing and analyzing our energy infrastructure to provide the most safe and reliable electric service. This includes maintaining vegetation that can threaten the safety and reliability of our transmission lines.

AT DOMINION ENERGY, protecting the grid and making it secure against natural and man-made acts is a top priority. We work alongside government officials to prepare for potential incidents that could affect our ability to provide electricity safely and reliably to the communities we serve. Learn how we're keeping you safe at powerlines101.dominionenergy.com.

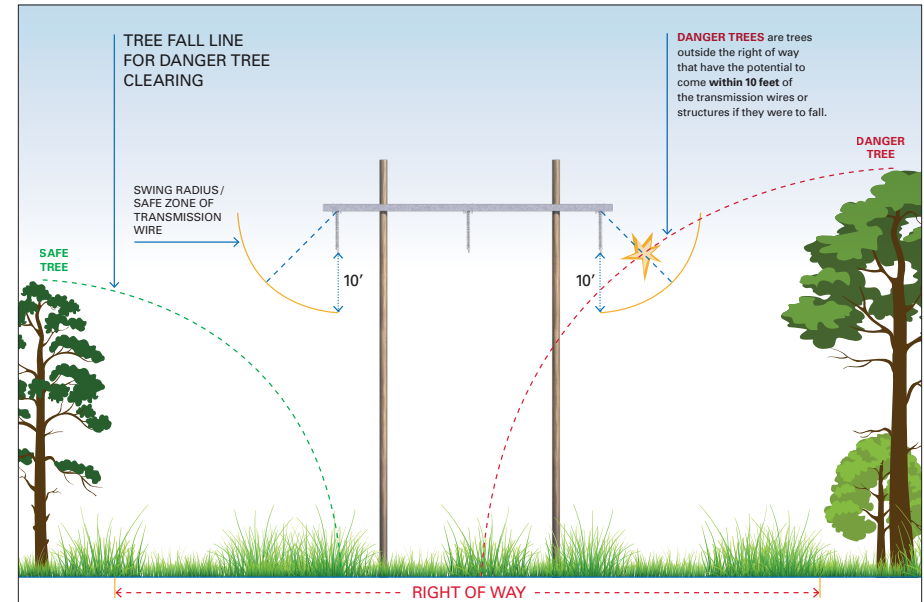
As part of our Tarboro to Hathaway 230 kV and Partial 115 kV Electric Transmission Line Rebuild Project, our forestry team will be surveying trees in your area over the coming weeks to identify danger trees that need removal.

Danger trees are trees outside the right of way, and possibly on your property, that have the potential to fall within 10 feet of the transmission wires or structures. Trees and tree limbs that come in contact with electrical lines are a leading cause of power outages, especially during storms. The removal of danger trees is necessary to help prevent large scale outages in your community.

If we need to access your property to inspect trees, our forestry team or contractors will reach out to you in person or by mail. Please know that we are committed to working safely and courteously on your property. Thank you for your understanding as we work to maintain reliable electricity in your area.

CONTACT US — Visit our website at DominionEnergy.com/Tarboro for project updates. Or contact us by sending an email to powerline@dominionenergy.com or calling 888-291-0190.

We understand trees are an important part of your property. Our team is dedicated to being respectful and providing as much information as possible regarding our danger tree removal process. We work hard to minimize our footprint while maintaining grid reliability and safety of the community. If you have questions or concerns about the right of way corridor, please email etrow@dominionenergy.com or call 800-215-8032.



This rendering is for illustrative purposes only and is not intended for detailed engineering purposes. Actual structure heights and types may vary.