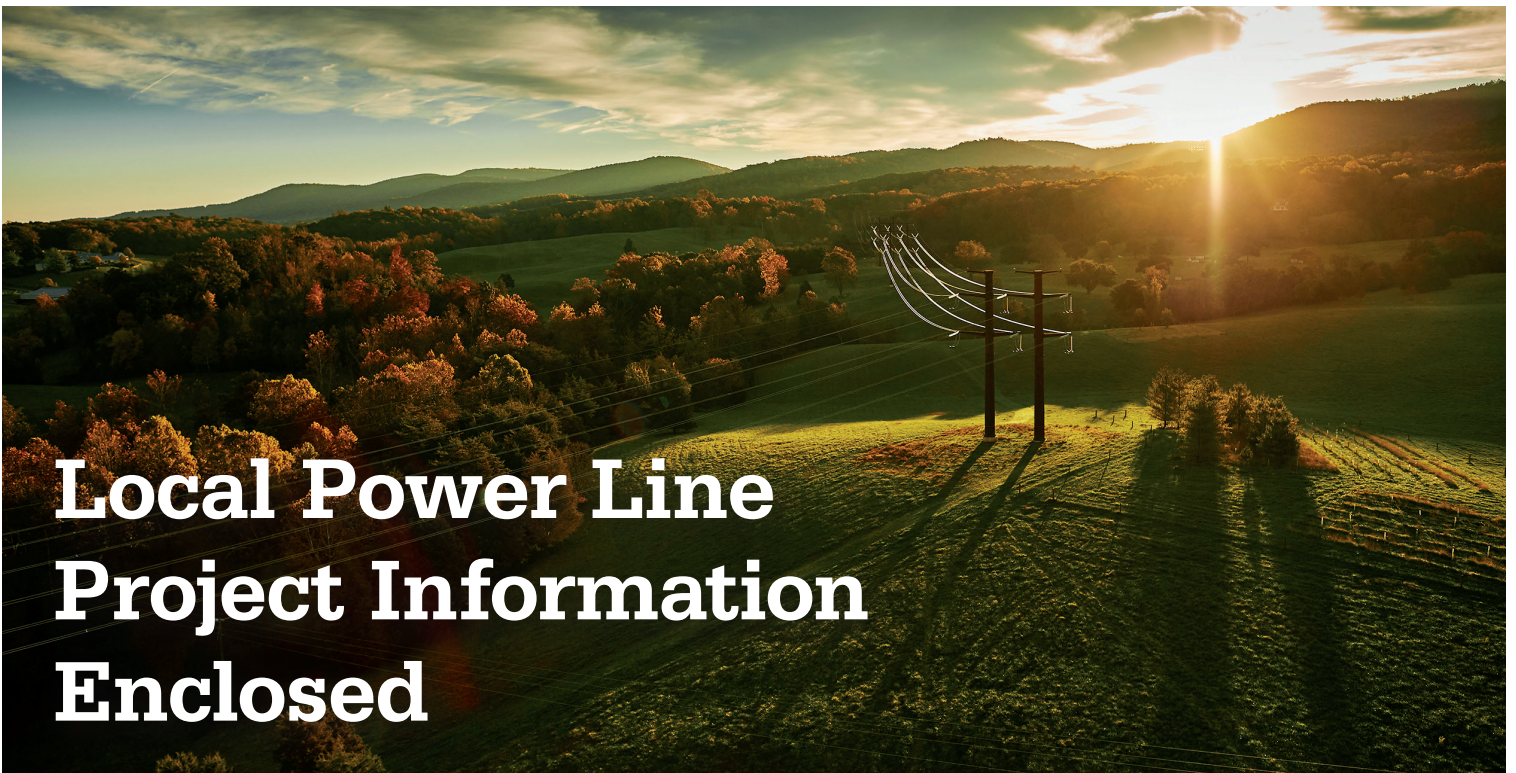


Electric Transmission
P.O. Box 26666
Richmond, VA 23261



Actions Speak Louder

Investing in Our Communities



Local Power Line Project Information Enclosed

Dominion Energy image. Not project specific.



IMPORTANT

Local Power Line Project Information

Use your iPhone camera or the QR reader app on other smartphones to visit the project page on our website.



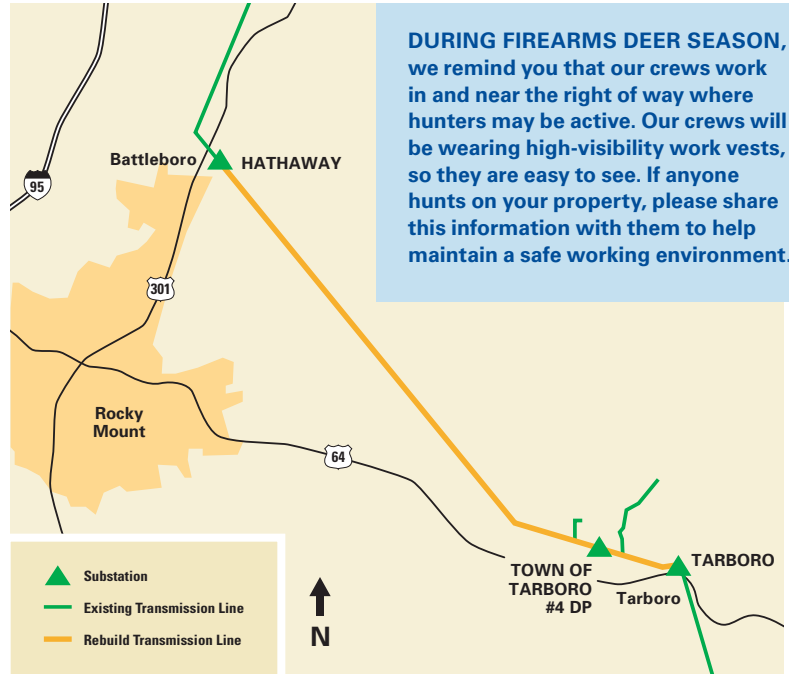
Tarboro to Hathaway 230 kV and Partial 115 kV Electric Transmission Line Rebuild Project

AT DOMINION ENERGY, we are dedicated to maintaining safe, reliable, and affordable electric service in the communities we serve. You are receiving this postcard because we are currently preparing to rebuild aging electric transmission infrastructure between our Tarboro and Hathaway substations in Edgecombe County, North Carolina.

After more than five decades of service, the existing structures and related components on the approximately 17-mile line are at the end of their service life and need to be replaced to meet current safety and reliability standards. Originally constructed on wooden pole and steel lattice structures, we are rebuilding the entire 230 kV line and parts of the 115 kV line in the same right of way using structures similar in appearance and height. The new structures will be constructed of brown, weathering steel. No new right of way is needed.

We will continue to update you as activities progress. Thank you for your patience and understanding as we work to complete this important project.

CONTACT US — Learn about our construction processes at powerlines101.dominionenergy.com. Or contact us by calling 888-291-0190 or sending an email to powerline@dominionenergy.com.



DURING FIREARMS DEER SEASON, we remind you that our crews work in and near the right of way where hunters may be active. Our crews will be wearing high-visibility work vests, so they are easy to see. If anyone hunts on your property, please share this information with them to help maintain a safe working environment.

This map is intended to serve as a representation of the project area and is not intended for detailed engineering purposes.

WHAT:

This project will rebuild aging electric transmission infrastructure between our Tarboro and Hathaway (near Battleboro) substations in Edgecombe County, North Carolina. No new right of way is needed for this project.

WHY:

The existing wooden and steel structures have been in service since 1967 and need to be rebuilt to current electric reliability standards based on end-of-life concerns.

WHERE:

This approximately 17-mile electric transmission line is located between the Town of Tarboro and the Community of Battleboro in Edgecombe County, North Carolina.

TIMELINE

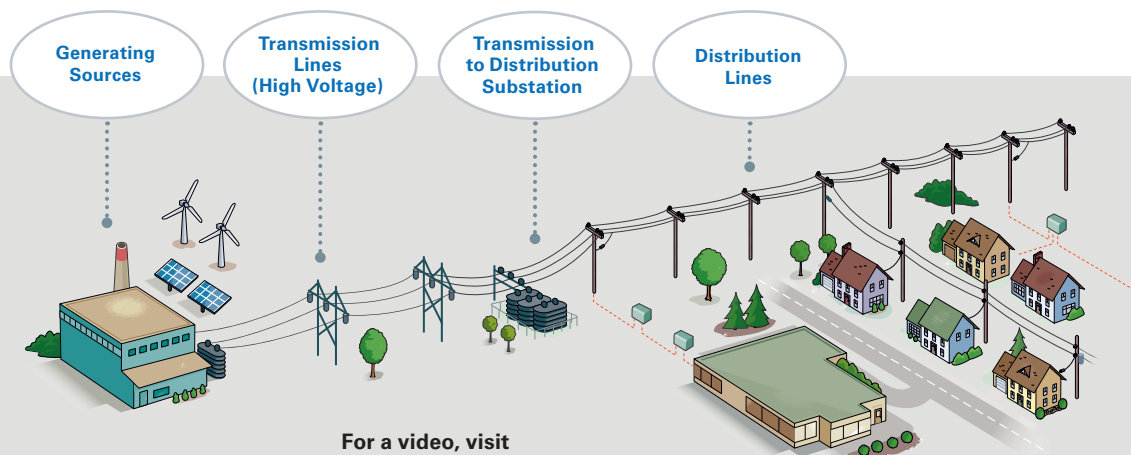
PHASE 1: summer 2022 – summer 2023 — Tarboro area line work in right of way

PHASE 2: fall 2022 – spring 2024 — Tarboro to Hathaway line work in right of way

* Work includes preconstruction activities through restoration of right of way

Delivering Clean, Safe, Affordable and Sustainable Energy

Transmission lines are the tall, high-voltage lines that carry electricity over long distances from power generation facilities to substations.



For a video, visit powerlines101.dominionenergy.com.