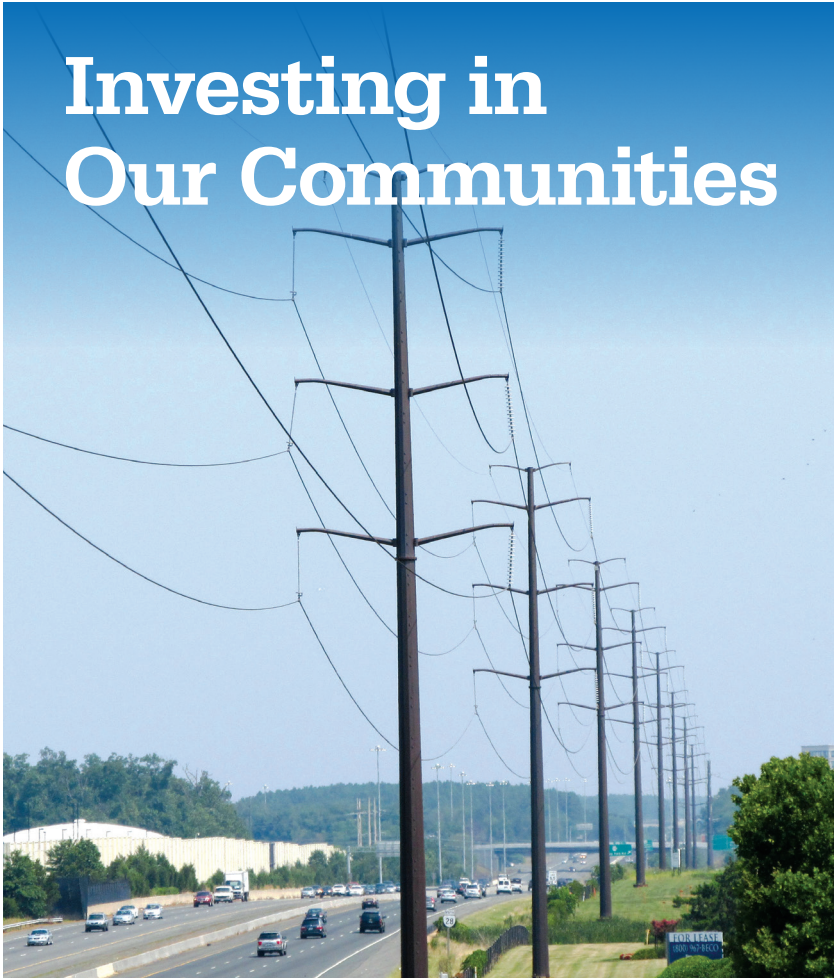


Investing in Our Communities



Dominion Energy image. Not project specific.

Electric Transmission
P.O. Box 26666
Richmond, VA 23261



Actions Speak Louder

**Local Power Line Project
Information Enclosed**

IMPORTANT

Local Power Line Project Information

Use your iPhone camera or the QR reader app on other smartphones to visit the project page on our website.




Thrasher Junction – Thrasher Substation Fiber Project

AT DOMINION ENERGY, we continually review our energy infrastructure to provide safe and reliable electricity to the communities we serve. You are receiving this postcard because we are preparing to install fiber on an existing electric transmission line between our Thrasher Substation and the Thrasher Junction located in the City of Chesapeake, Virginia.

This project will improve communications between substations and provide the necessary resiliency and security to operate and monitor the bulk power system.

We are scheduled to begin surveying activities this summer and fall. These activities may include crews entering the existing electric transmission corridor near your property, placing boundary flags, obtaining small soil and/or vegetation samples, and wetland delineation.



AT DOMINION ENERGY, protecting the grid and making it secure against natural and man-made acts is a top priority. We work alongside government officials to prepare for potential incidents that could affect our ability to provide electricity safely and reliably to the communities we serve. Learn how we're keeping you safe at powerlines101.dominionenergy.com.

In summer 2024, we will place wooden matting and build access roads to safely access the electric transmission line structures. Fiber installation is expected to occur in late summer and fall 2024. After project completion, we will restore the area. This schedule is subject to change.

Your electric service is not expected to be interrupted due to this project. Thank you for your patience and understanding as we complete this important work.

CONTACT US

Visit our website at powerlines101.dominionenergy.com to learn about our construction processes. Or contact us by sending an email to powerline@dominionenergy.com or calling 888-291-0190.



This map is intended to serve as a representation of the project area and is not intended for detailed engineering purposes.