

# Welcome To The Meeting!

## We're Glad You're Here!

### Tributary 230 kV Electric Transmission Project



**Dominion  
Energy**<sup>®</sup>

Powering Your Every Day.<sup>SM</sup>



# Project Overview



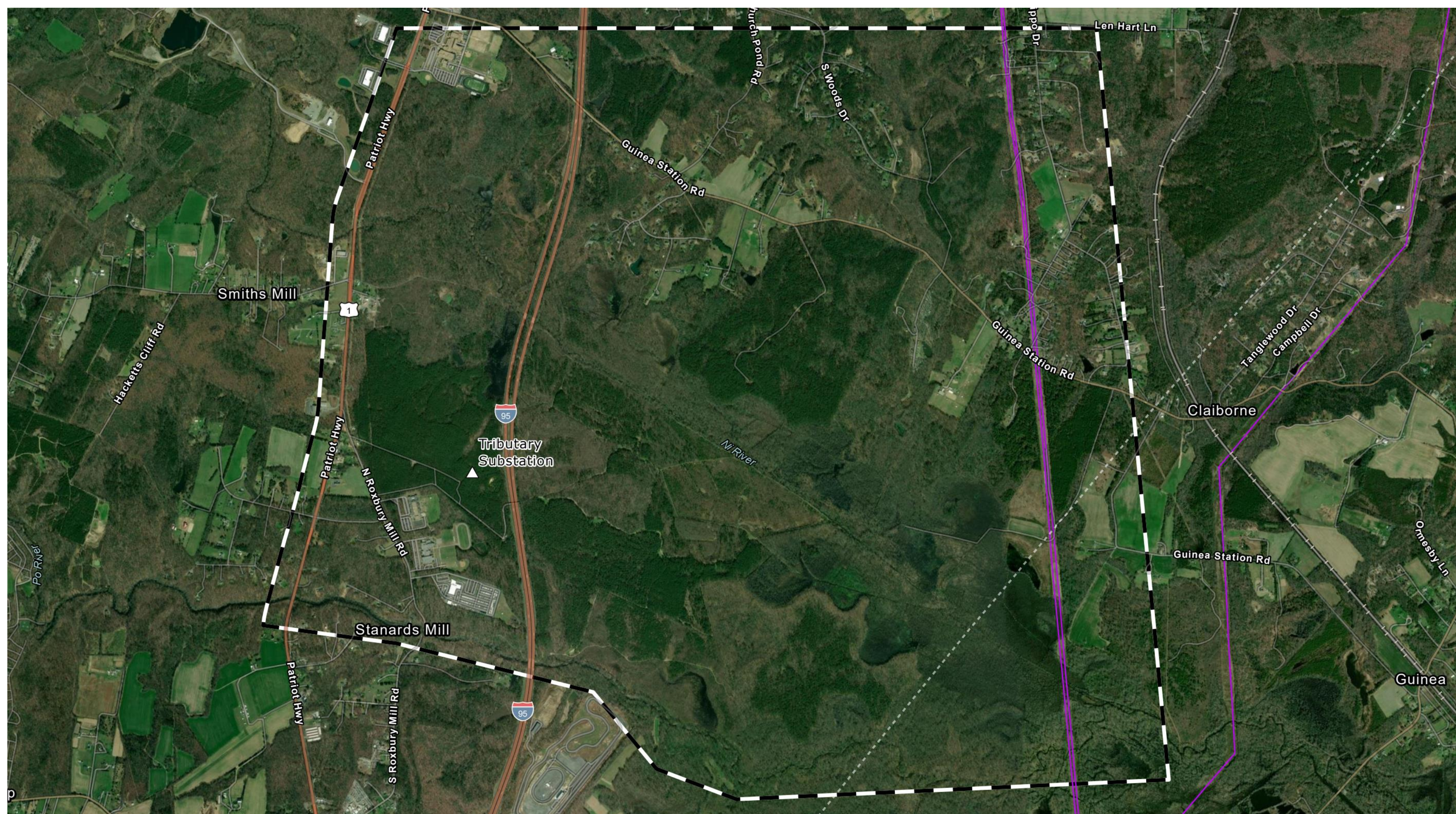
## Tributary 230 kV Electric Transmission Project

Spotsylvania County is experiencing growing energy demands as the SpotsyTech Park has brought new business growth to the area.

A new substation called Tributary Substation and a corresponding double-circuit 230 kilovolt (kV) electric transmission line is needed to:

- Meet the expanding power needs
- Maintain federal reliability rules
- Keep the grid operating efficiently

We are considering several routes for the new transmission line. One proposed route with alternatives will be submitted to the Virginia State Corporation Commission (SCC) for final evaluation and approval.



Keep up with the latest project information on our website:  
[DominionEnergy.com/tributary](http://DominionEnergy.com/tributary)



## Tributary Electric Transmission Project

Project Schedule	
Early Summer 2024	<ul style="list-style-type: none"><li>• Project announcement</li></ul>
Summer 2024	<ul style="list-style-type: none"><li>• Community engagement</li></ul>
Fall 2024	<ul style="list-style-type: none"><li>• File application with the Virginia State Corporation Commission (SCC)</li></ul>
Summer 2025	<ul style="list-style-type: none"><li>• Anticipated SCC ruling</li></ul>
2025- Summer 2026	<ul style="list-style-type: none"><li>• Permitting</li><li>• Finalize engineering</li><li>• Pre-construction activities</li><li>• Project outreach continues</li></ul>
Summer 2026	<ul style="list-style-type: none"><li>• Construction begins</li></ul>
Early 2027	<ul style="list-style-type: none"><li>• Construction complete</li><li>• Restoration begins</li></ul>

This schedule is subject to change based on weather, permits, etc. For the latest information, visit our website, [DominionEnergy.com/tributary](https://www.dominionenergy.com/tributary).



# Stay Connected

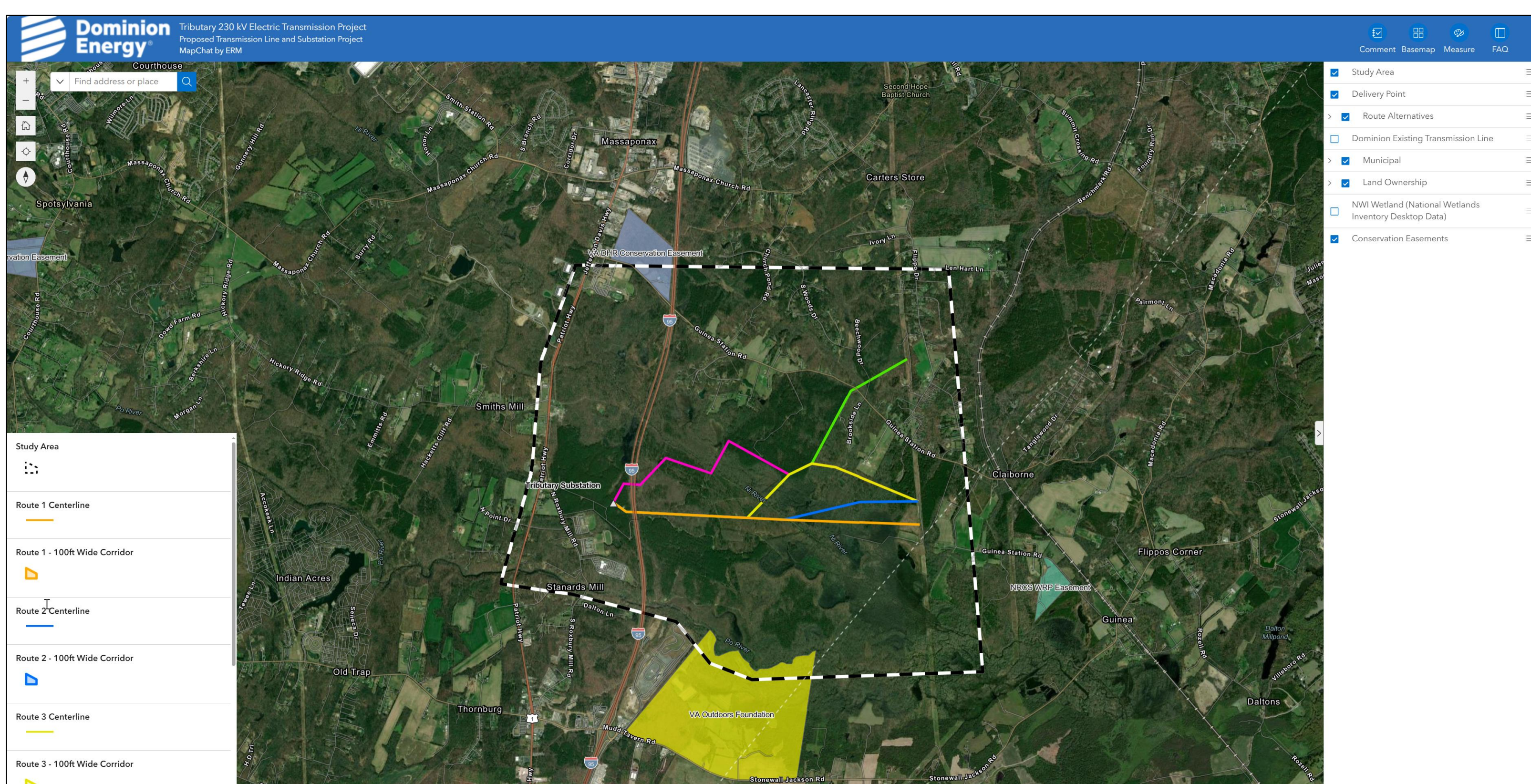


At your convenience, you can use **MapChat by ERM** to explore the proposed project routes. You can participate in the routing process by leaving comments.



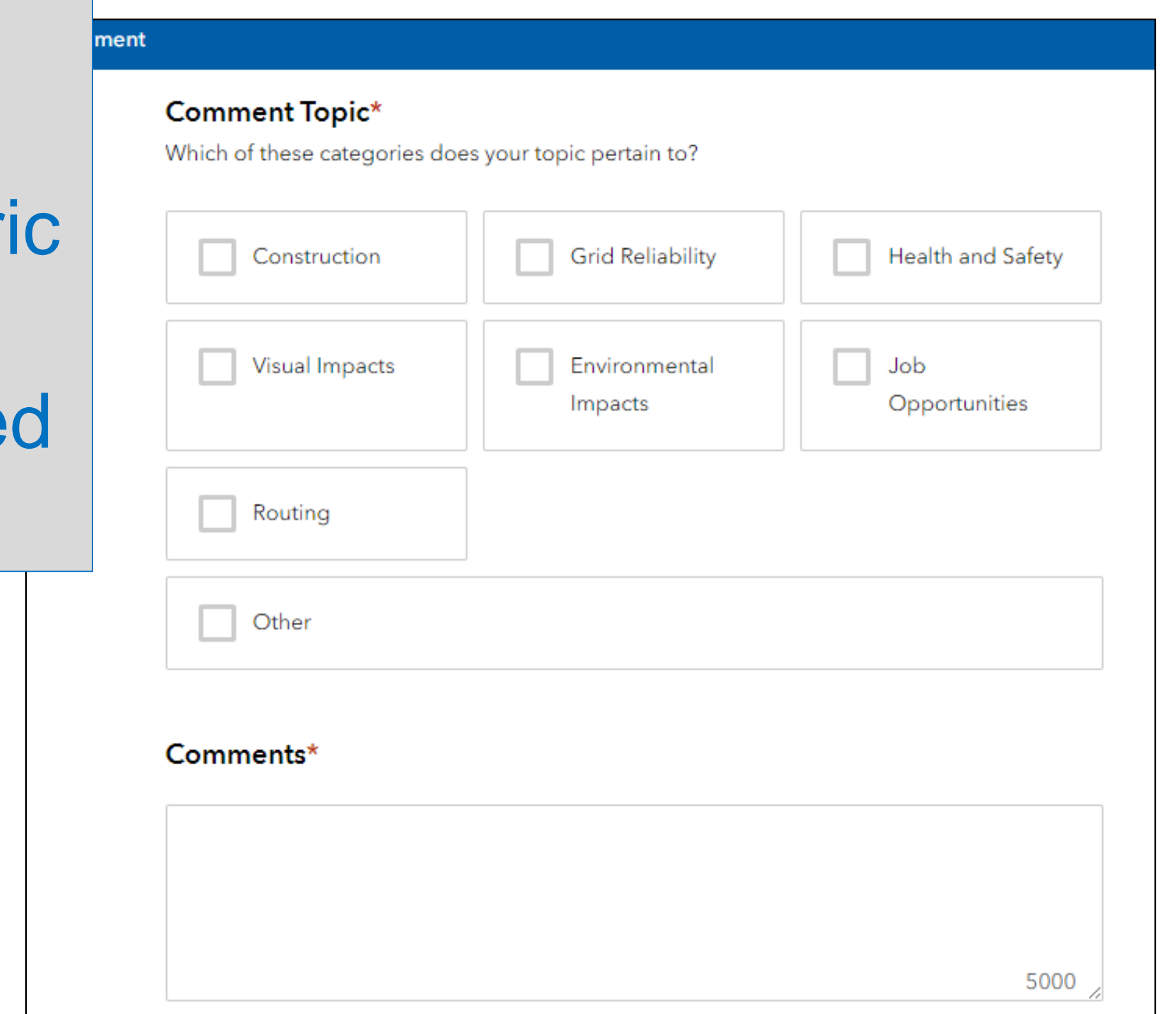
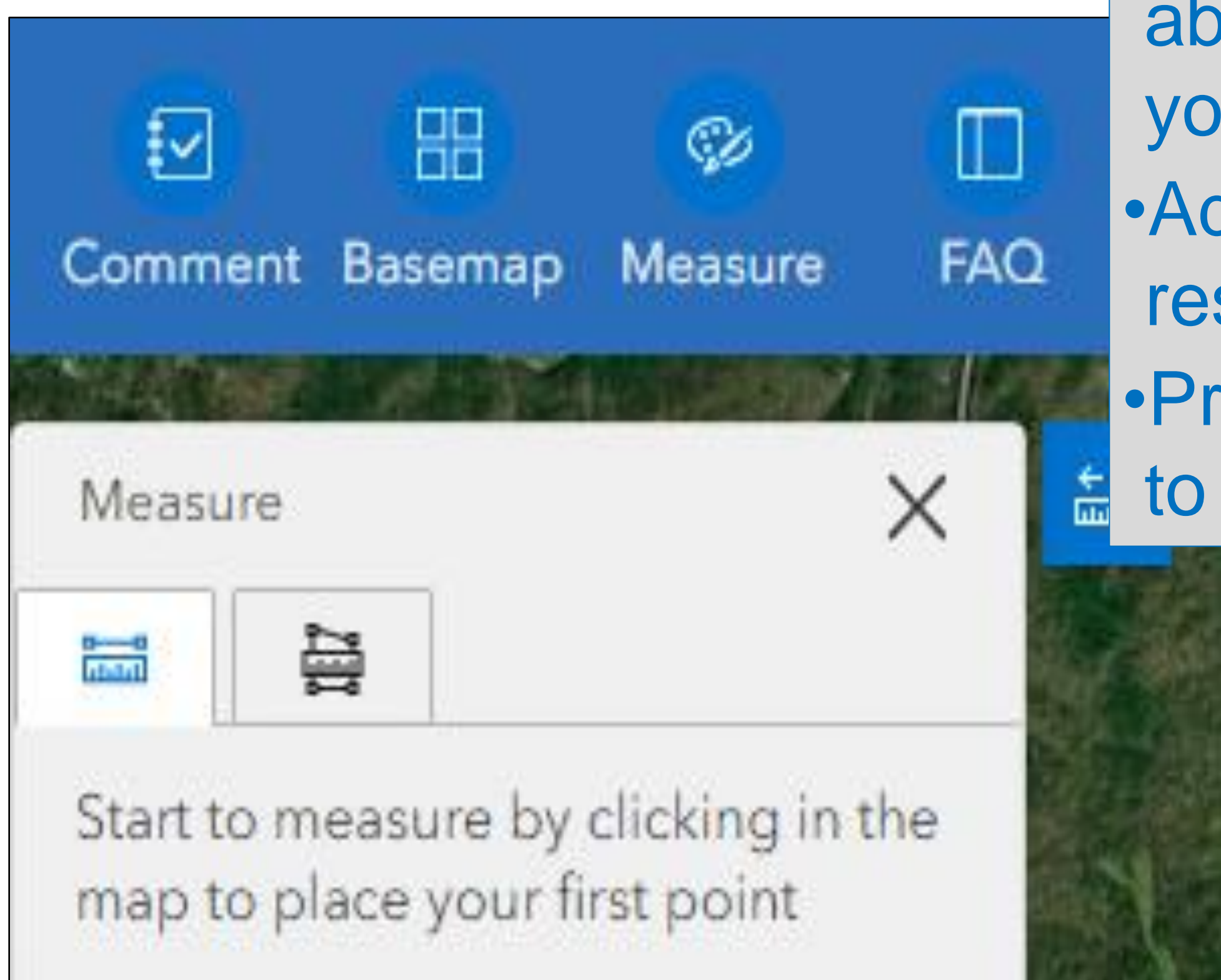
## Access MapChat by ERM to:

- Leave a comment for our team
- Change the base map / background
- Measure distances
- Toggle on / off layers to view environmental features, parcel boundaries, and more
- View current and previous versions of routes

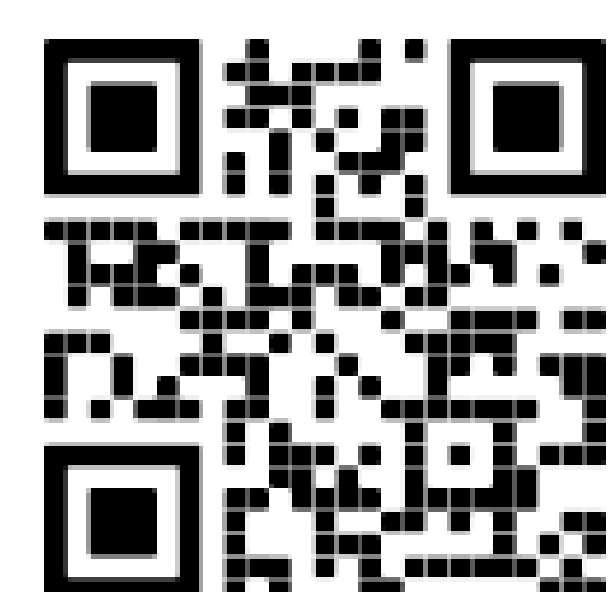


## Access MapChat by ERM to:

- Provide feedback to our team about the locations that matter to you.
- Add details about natural or historic resources in your community.
- Provide specific information related to your property.



For more information about this project, visit our website:  
[DominionEnergy.com/tributary](http://DominionEnergy.com/tributary).  
Or contact us:  
**email:** [powerline@dominionenergy.com](mailto:powerline@dominionenergy.com)  
**phone:** 888-291-0190



Scan here to access  
MapChat by ERM



# Routing Principles



## **We are committed to working safely and courteously in your community**

Dominion Energy always begins planning solutions by reviewing existing facilities and existing right of way corridors.



### **Selecting new right of way**

When necessary, new right of way corridors are selected after careful consideration with the purpose of minimizing impact on private property, and environmental, historic, cultural and scenic resources.

### **Measuring impact**

Proposed routes undergo extensive quantitative analysis to measure and compare how each route will impact these resources. Colocating facilities with other infrastructure can help mitigate such impact.

### **Community Engagement**

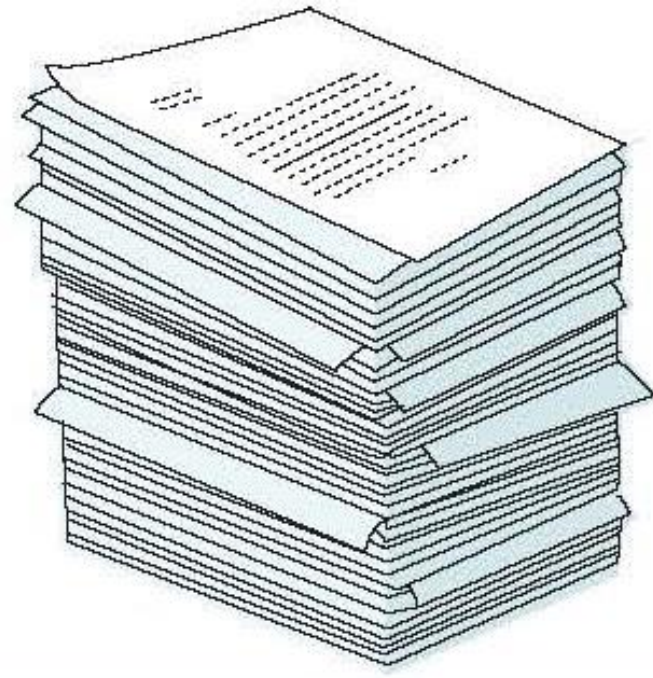
We are committed to working with the community to find the best possible solution. Your participation and involvement is an important part of our project development.



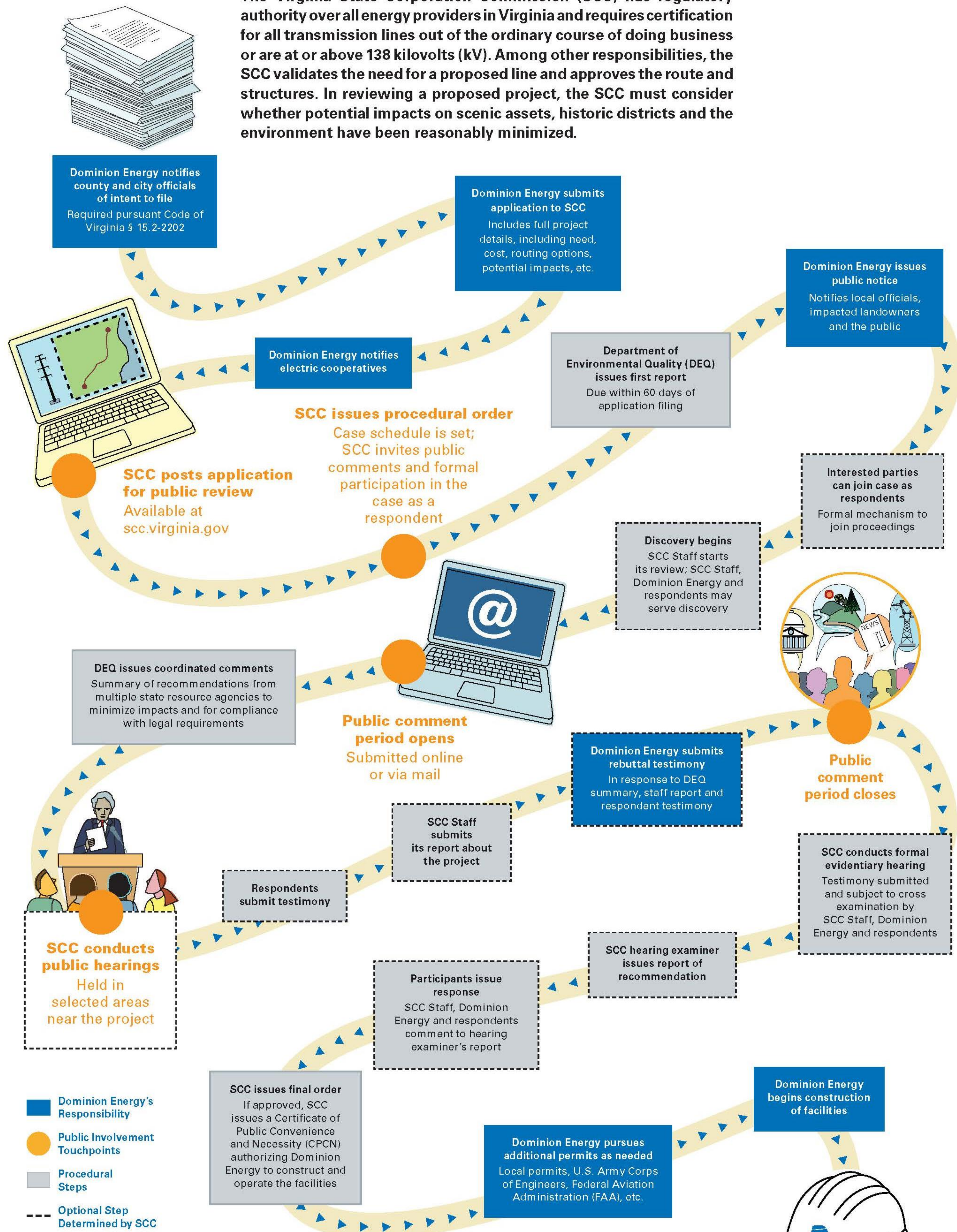
**Learn more about our construction processes at  
[powerlines101.dominionenergy.com](http://powerlines101.dominionenergy.com)**



# Virginia SCC Application



The Virginia State Corporation Commission (SCC) has regulatory authority over all energy providers in Virginia and requires certification for all transmission lines out of the ordinary course of doing business or are at or above 138 kilovolts (kV). Among other responsibilities, the SCC validates the need for a proposed line and approves the route and structures. In reviewing a proposed project, the SCC must consider whether potential impacts on scenic assets, historic districts and the environment have been reasonably minimized.



Process could take as little as eight months to complete if uncontested, with more complex proceedings ranging from 12–24 months from start to finish

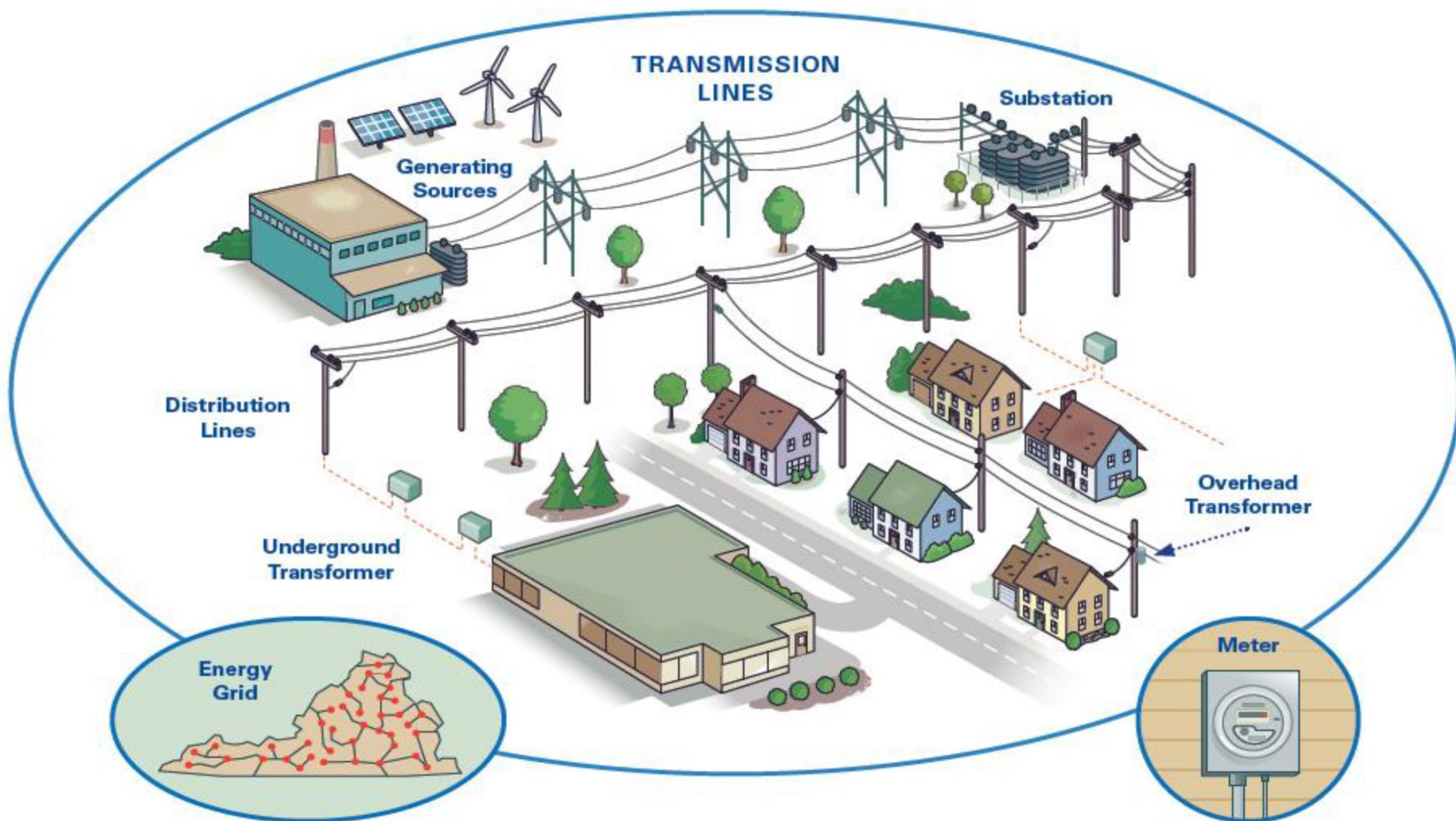




# Energy Grid



**Transmission lines** move energy from power stations to substations. Power stations, — fueled by natural gas, wind, solar or other sources — make energy. **Substations** take that energy and either lower or increase the voltage so distribution lines can safely carry the energy to homes and businesses. Transmission lines are connected and work together to form what we call the **energy grid**.



## Transmission Lines

Electric transmission lines are the tall high-voltage lines that carry electricity over long distances, such as from a power station to a city.



## Distribution Lines

Distribution lines carry electricity or energy to homes and businesses.



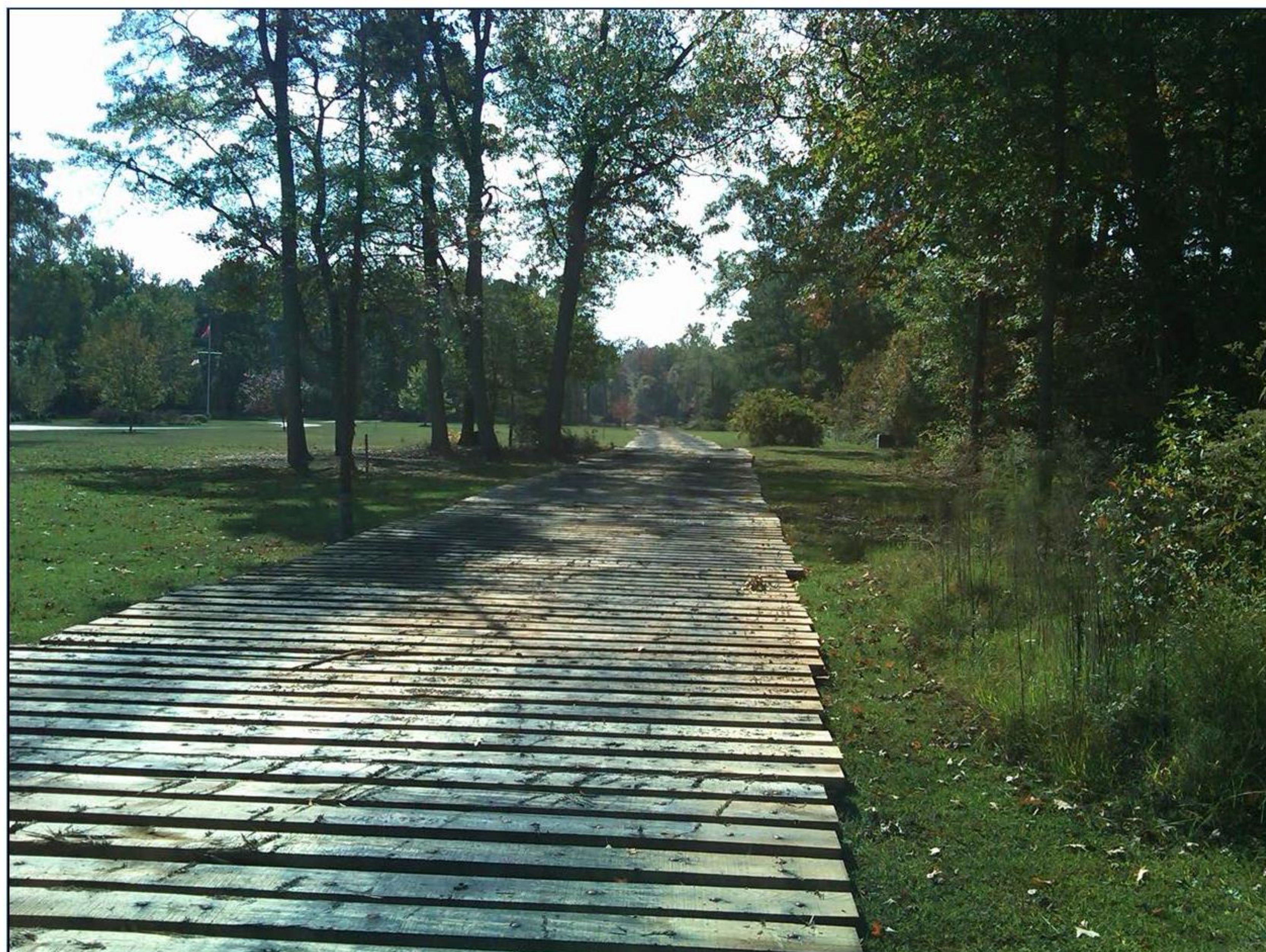


# Environmental Protection



## Partnering with state and local agencies to complete evaluations and mitigate impacts

- Dominion Energy operates its electric transmission lines in accordance with standards and specifications for erosion/sediment control and storm water management approved by the Virginia Department of Environmental Quality (DEQ).
- Crews receive copies of the specifications and any additional permit conditions prior to construction. All requirements must be met.
- Once construction is completed, Dominion Energy crews begin restoration of the area.



## Clearing activities

- Clearing is completed by hand in wetland areas and within 100 feet of streams.
- Care is taken not to leave debris in streams and wetland areas.
- Erosion control devices are used on an ongoing basis during all clearing activities.

## Matting activities

- Matting is used for heavy equipment in wetlands and other environmentally sensitive areas.



# Stakeholder Engagement

