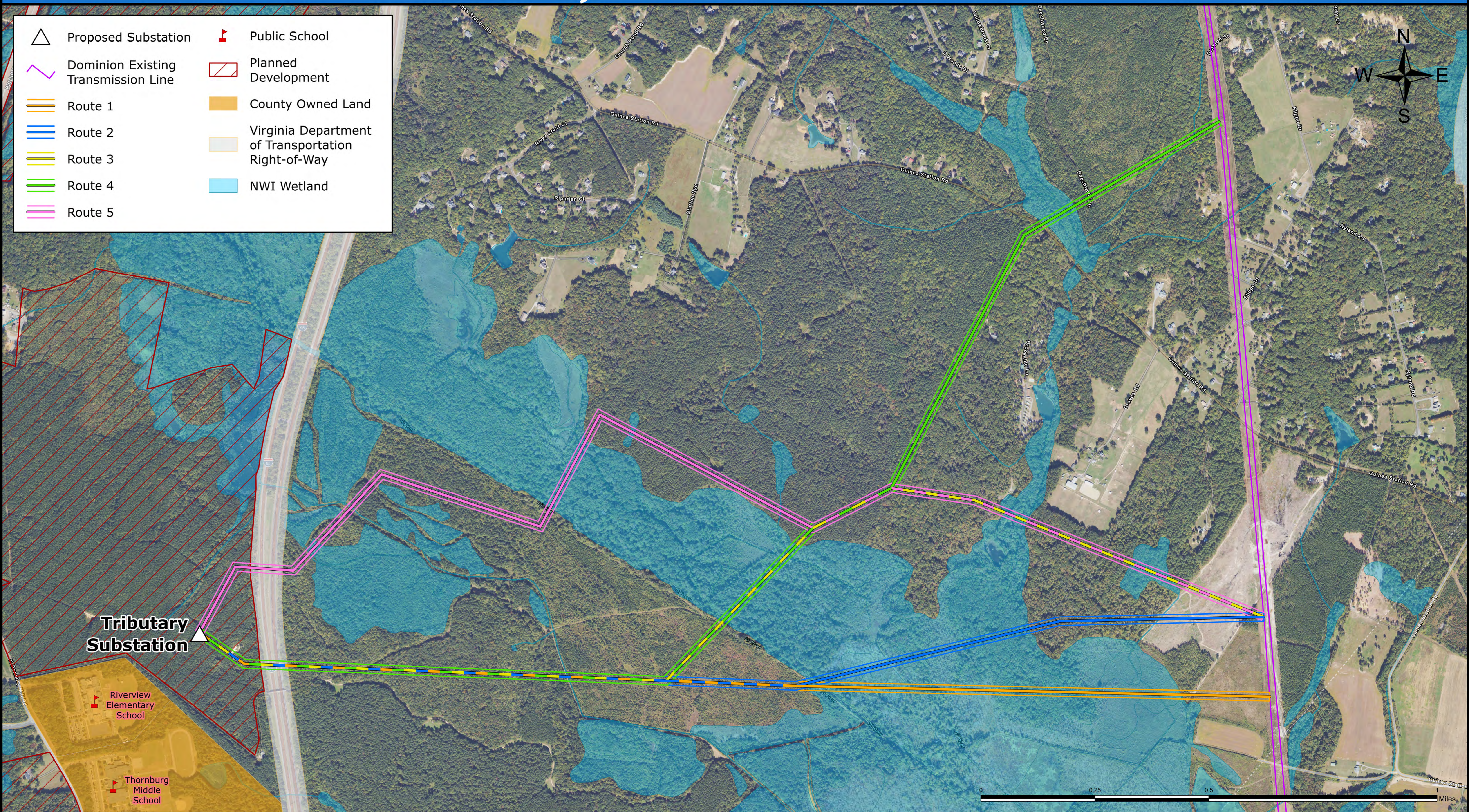


# Project Constraints

	Proposed Substation		Public School
	Dominion Existing Transmission Line		Planned Development
	Route 1		County Owned Land
	Route 2		Virginia Department of Transportation Right-of-Way
	Route 3		NWI Wetland
	Route 4		
	Route 5		



**Tributary Substation**

Riverview Elementary School

Thornburg Middle School

## Tributary 230 kV Electric Transmission Project