



Sept. 20, 2024

Proposed Tributary 230 kV Electric Transmission Project

Dear Neighbor,

At Dominion Energy, we are dedicated to keeping our communities up to date on projects in their area. You are receiving this letter because we would like to provide an update to the Tributary 230 kV Electric Transmission Project. The project proposes a new switching station and an associated double-circuit 230 kilovolt (kV) electric transmission line.

Our team would like to thank each property owner who attended our community meetings or contacted us with feedback on the project. Recently, our team made routing adjustments. The current routes are available for viewing in the enclosed map.

Additionally, you may view a copy of this map, and previous versions of our routes on our project website, DominionEnergy.com/tributary, or use our interactive mapping tool, MapChat by ERM. The key changes to the routes are listed below:

1. **The Orange Route (Route 1) and Pink Route (Route 5)** have been removed from consideration.
2. **The Yellow Route (Route 3) and Blue Route (Route 2)** have shifted south.

We are working to file an application with the Virginia State Corporation Commission (SCC) in the coming weeks. Multiple routes are being evaluated, and one proposed route with alternatives will be submitted to the SCC for final evaluation and approval. Only one route will be selected to construct.

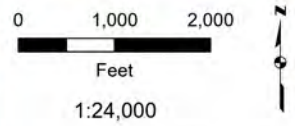
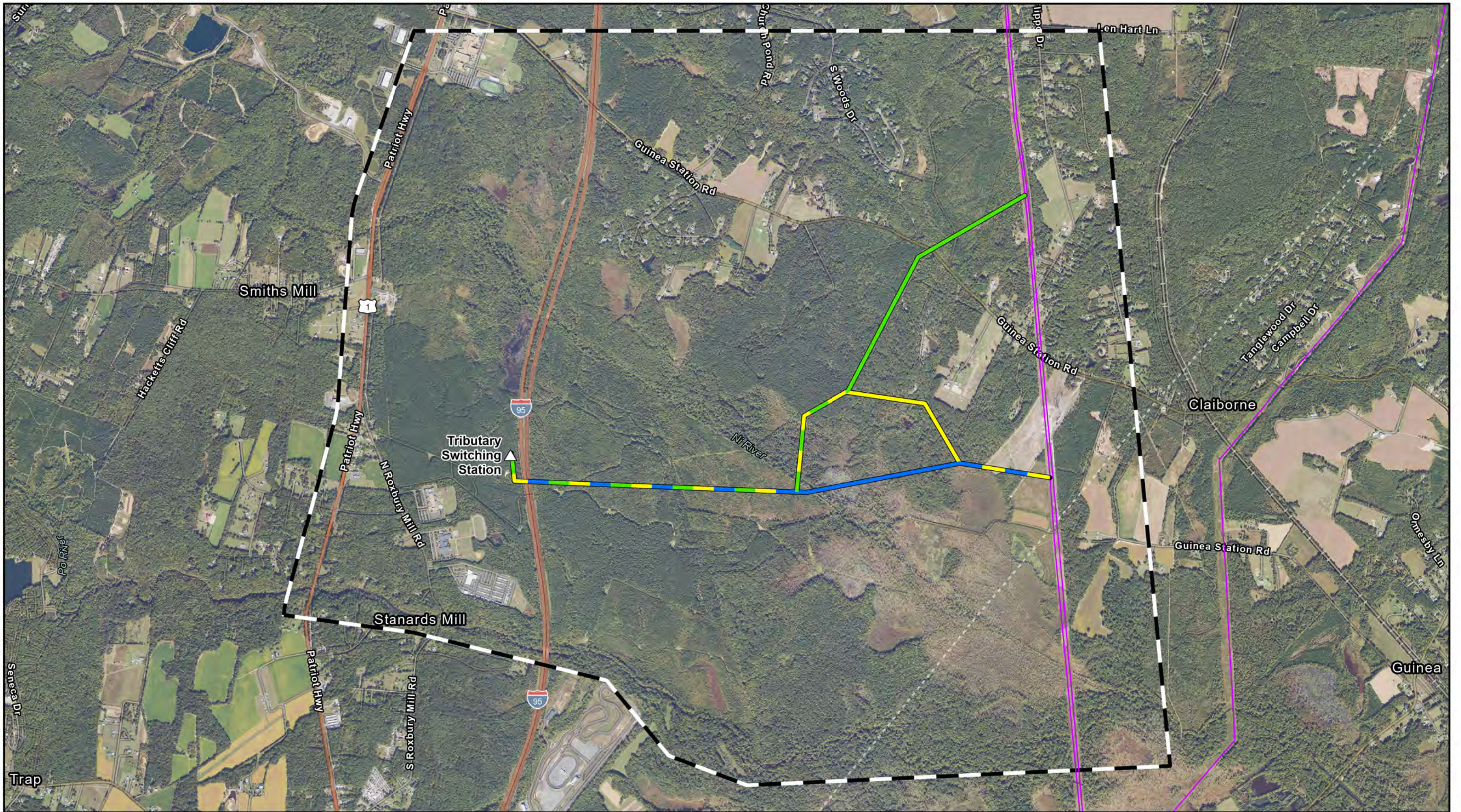
For questions about the project, contact our project team by email at powerline@dominionenergy.com or by phone at 888-291-0190.

Thank you for your understanding while we plan for long-term reliability investments in your community.

Sincerely,

The Electric Transmission Project Team

Enclosure: Updated Route Map



- △ Proposed Switching Station
- Dominion Existing Transmission Line
- Route 3
- Route 4
- Route 2
- ▭ Study Area



Project Overview Aerial
Tributary 230 kV Electric Transmission Project
 Dominion Energy Virginia
 Spotsylvania County, Virginia

