

Dominion Energy Virginia
Electric Transmission
P.O. Box 26666, Richmond, VA 23261
DominionEnergy.com



Jan. 15, 2025

Proposed Carmel Church and Ruther Glen 230 kV Electric Transmission Projects

Dear Neighbor,

At Dominion Energy, we are dedicated to keeping neighbors informed of projects in the communities we serve. You are receiving this letter because we would like to provide an important update to our proposed Carmel Church and Ruther Glen 230 kV Electric Transmission Projects.

On Dec. 12, 2024, we filed an application with the Virginia State Corporation Commission (SCC). You may view all public documents related to this case on the SCC Docket Search using case number **PUR-2024-00221**.

In our filing, we identify one proposed route and alternatives for each project. The proposed routes were determined after conducting community outreach and studies of environmental, historical, and cultural resources in the area.

- Our proposed route for the Ruther Glen Project is Route 5, also known as the Brown Route
- Our proposed route for the Carmel Church Project is Route 1, also known as the Blue Route

Information about the filing is also available on the legal section of the project website, [DominionEnergy.com/carmelchurchrutherglen](https://www.dominionenergy.com/carmelchurchrutherglen). You can find more details about the project on the webpage including photo simulations, project updates, and our interactive mapping tool that allows you to view the project area and individual structure changes.

Our team would like to thank each community member who attended our meetings or contacted our team to improve our understanding of the area and what matters most to you. Our commitment to community engagement does not end with our application; we will keep you informed throughout the SCC process and construction. Please do not hesitate to reach out to our team with questions.

Visit our website [DominionEnergy.com/carmelchurchrutherglen](https://www.dominionenergy.com/carmelchurchrutherglen) for more project information. You can also contact our project team by email at powerline@dominionenergy.com or by phone at 888-291-0190.

Sincerely,

The Electric Transmission Project Team

Enclosures: SCC FAQ and Project Map

Carmel Church and Ruther Glen 230 kV Electric Transmission Projects
Virginia State Corporation Commission (SCC)
Frequently Asked Questions (FAQ)

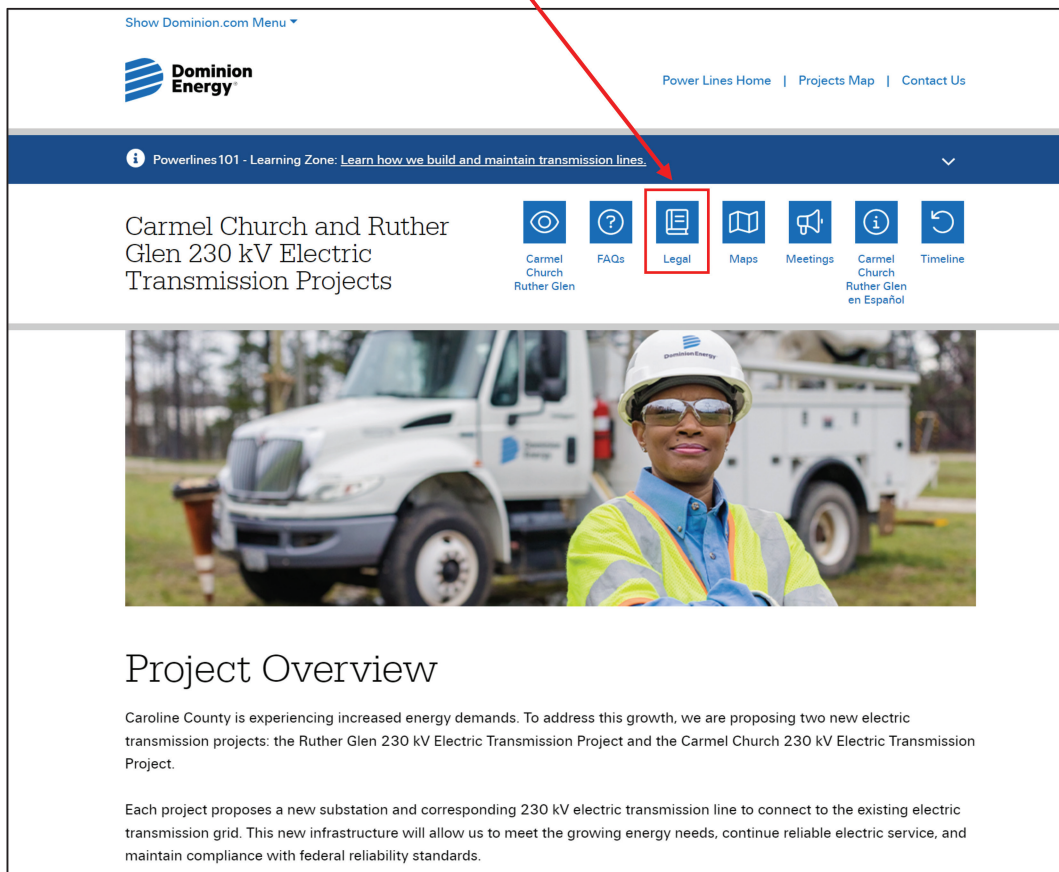
1. How can I follow the SCC process?

Key documents associated with the project can be viewed on our project website. Visit DominionEnergy.com/carmelchurchrutherglen and select the “Legal” tab at the top of the page. Here, you can find the information needed to access all case documents, including the case number, application, and a link to the SCC’s Case Docket Search page. Dominion Energy will host some case documents on our project website, such as the filing, the hearing examiner report, and the final order. To view every filed document with the case, visit the SCC Case Docket Search.

Case number: PUR-2024-00221

Filing name: Carmel Church and Ruther Glen 230 kV Transmission Line Projects

View the application by selecting the “Legal” tab at the top of our website.



2. What is included in the SCC application?

The SCC application includes a routing study, need for the proposed project, description of the proposed project, impact of the transmission lines on scenic, environmental, and historic features, the health aspects of Electromagnetic Fields (EMF), Environmental Justice studies, community outreach, and more.

3. How did Dominion Energy select the “proposed” routes?

To the greatest extent possible, the proposed route minimizes impacts to private property, the community, environment, and historical and cultural resources. As part of our SCC application, all impacts are captured in our routing study. We also considered length, public feedback, constructability, cost, the time to construct, and more. The SCC will take all the evidence provided in our application and will ultimately select and approve the final route.

4. Is community feedback taken into consideration when selecting the proposed routes?

As part of our commitment to working with the community, Dominion Energy held two in-person public meetings in 2024. We conducted individual meetings at the request of interested community members to review transmission line route options. This feedback was captured, analyzed, and where possible, incorporated into our project plans.

5. What is the next step after filing?

The SCC will issue an Order for Notice and Hearing and procedural schedule. This typically occurs a few weeks after our application is filed. The Order for Notice and Hearing will outline the Company's additional public, government official, and landowner notice requirements as well as establish a procedural schedule for party submissions, public participation, and a hearing.

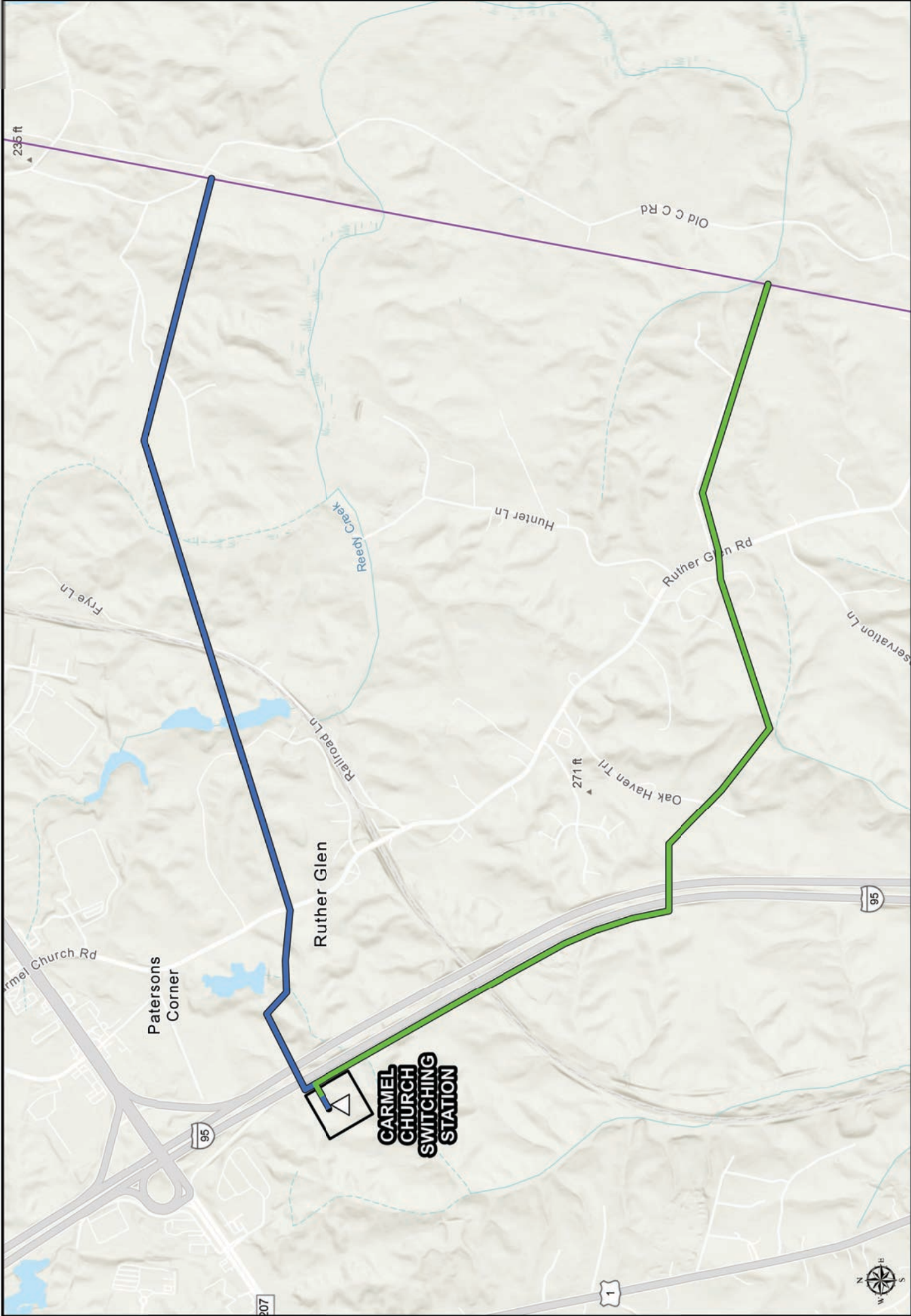
6. What happens once the SCC selects the final routes?

The SCC will issue a final order after completing a review of Dominion Energy's application. If a need for the project is demonstrated, the SCC will also determine if the routes reasonably minimize impacts to the community and should be constructed. Property owners near the selected routes will be notified. We will continue to keep the community informed of the construction schedule and the easement acquisition process.

7. How long does the SCC process take?

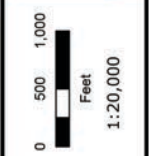
The SCC approval process typically takes about one year but varies depending on project details. In our application, Dominion Energy requested a final order by Aug. 1, 2025. Depending on the length of their process, the SCC may not issue a final order by this date.





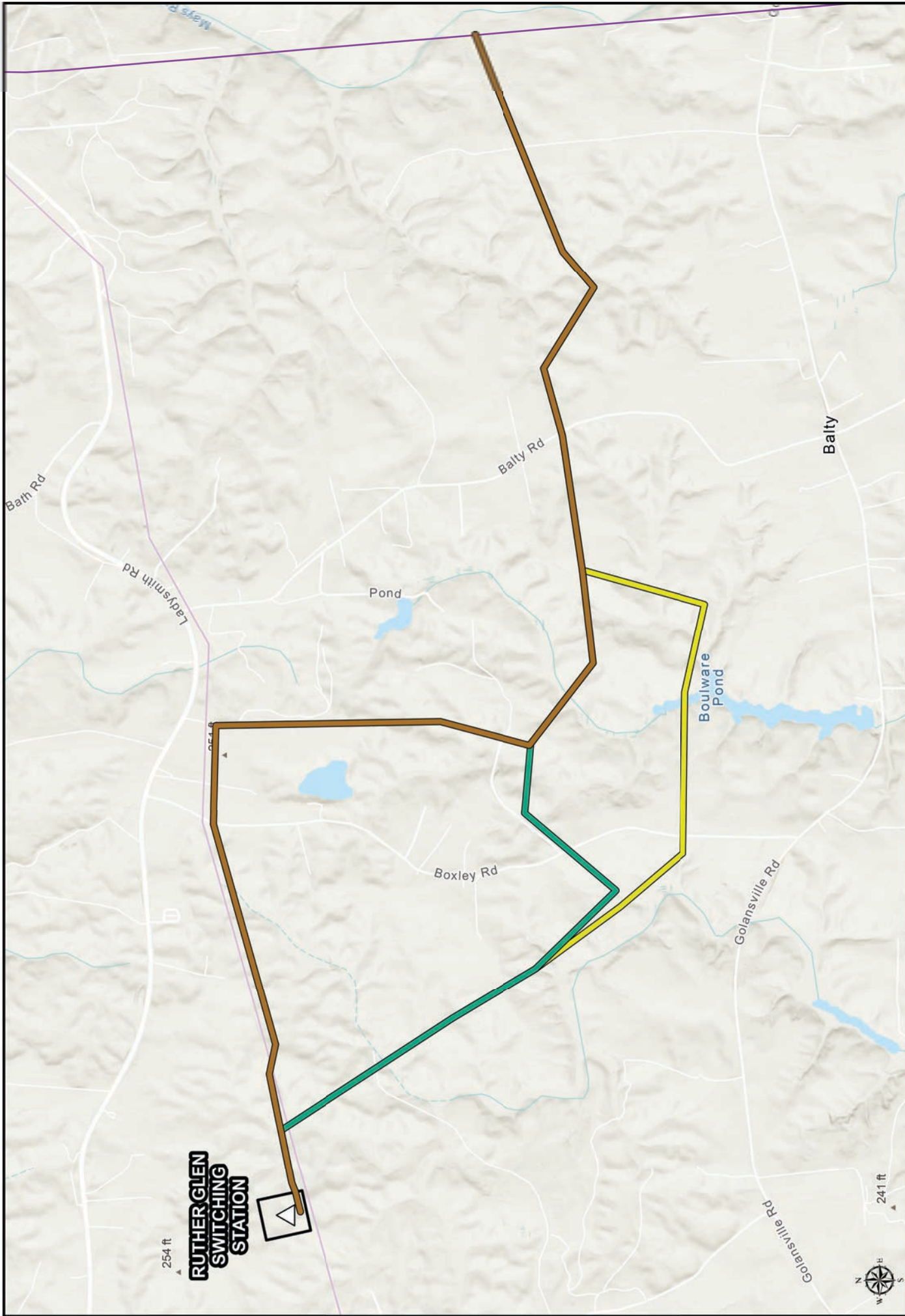
- Proposed Switching Station
- Existing Dominion Energy Electric Transmission Line

- Switching Station Boundary
- Proposed Route
- Alternative Route 2



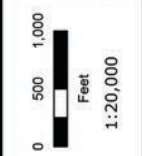
ERM

Project Overview Map
Carmel Church 230 kV Electric Transmission Project
 Dominion Energy Virginia
 Caroline County, Virginia



- Proposed Switching Station
- Existing Dominion Energy Electric Transmission Line
- Existing REC Line

- Switching Station Boundary
- Proposed Route
- Alternative Route 4
- Alternative Route 6



ERM

Project Overview Map
Ruther Glen 230 kV Electric Transmission Project
 Dominion Energy Virginia
 Caroline County, Virginia

Dominion Energy