

# Western Chesterfield 230 kV Electric Transmission Improvement Project

CHESTERFIELD COUNTY, VIRGINIA



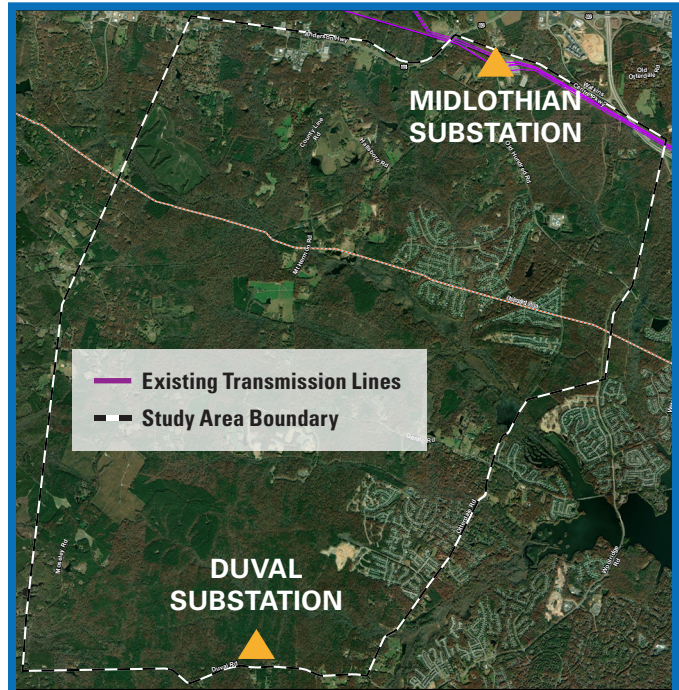
AT DOMINION ENERGY, we are committed to providing the reliable, affordable, and increasingly clean energy that powers our customers every day. Western Chesterfield County has experienced increased energy demands due to residential and commercial growth. Therefore, Dominion Energy is proposing new electric infrastructure to serve the growing needs of the region and maintain reliable electric service with the Western Chesterfield 230 kV Electric Transmission Improvement Project.

This project proposes a new substation and corresponding 230 kV electric transmission lines to connect to the existing electric transmission grid.

## QUICK FACTS

- **Location:**
  - The proposed Duval Substation will be located within the Upper Magnolia site off Duval Road.
  - A new electric transmission corridor to place 230 kV electric transmission lines will be routed from our existing Midlothian Substation to the future Duval Substation, approximately 6.5 miles away. Routes are expected to be approximately 7–9 miles in length.
- **Study Area:** The area currently under consideration for new corridors to connect the future substation to an existing transmission line.
- Dominion Energy will review multiple route options for the new 160 ft. wide corridor, and list one proposed route to the Virginia State Corporation Commission (SCC), with alternatives. The SCC will only select one route for the company to construct.
- Overhead, underground, and hybrid (overhead-underground combination) options are under consideration for this project.
- The routes shown in the early stages of the project are subject to change. Stay up to date by visiting our interactive mapping tool on our project website.
- Attend our community meetings or contact our team to share feedback on the routes.

## PROJECT STUDY AREA



*This map is intended to serve as a representation of the project area and is not intended for detailed engineering purposes.*

## PROJECT SCHEDULE SUBJECT TO CHANGE

DATE	ACTIVITY
Fall 2024	Project announcement Community Engagement Begins
Early Spring 2025	File application with the Virginia State Corporation Commission (SCC)
Spring 2026	Anticipated SCC ruling
2025 – Summer 2026	<ul style="list-style-type: none"> <li>• Permitting</li> <li>• Finalize engineering</li> <li>• Pre-construction outreach</li> </ul>
2027 – 2028	Construction

## PLANNING FOR FUTURE GROWTH

- Dominion Energy is proposing a 160 ft. wide right of way corridor to accommodate a double-circuit 230 kV electric transmission line to support growing for the upcoming residential and commercial demand.
- This right of way width can accommodate additional circuits in the same corridor if additional load materializes in the western Chesterfield area.

## PROJECT OVERSIGHT AND APPROVAL

Dominion Energy has an obligation to serve and maintain reliability for all customers. Entities such as PJM – which operates the electric grid in 13 states – and NERC, North American Electric Reliability Corporation, oversee standards to ensure reliability and the prudence of investments by utility companies like Dominion Energy.

The SCC is the regulatory body with jurisdiction over electric transmission lines in Virginia. This project will be reviewed by the SCC, which we intend to file in Spring 2025. Our SCC application and associated documents are made public upon filing and will be available for viewing. Visit the legal section of our project website for more details.

Although the SCC is the primary state agency reviewing and ultimately approving the project, there may be additional permits needed from various agencies, such as the Army Corps of Engineers.

## DETERMINING THE ROUTES

Dominion Energy is currently in the initial stages of the siting and routing process. New line routes will need to connect the new Duval substation to our existing electric transmission grid.

The planning and evaluation of electric transmission routes and any potential alternatives are one of the most challenging things we do at Dominion Energy. We recognize the potential impact a new transmission line has on the community. Multiple factors are considered when deciding where to propose to build a new line including, but not limited to, land use, historic and cultural resources, environmental impacts, wetlands, environmental justice, and tribal property. We consider these factors to avoid or limit community impact and take community feedback into our plans wherever possible.

Ultimately, the SCC must approve the project need and route prior to construction.



Example of double-circuit monopole overhead structure

## YOUR FEEDBACK MATTERS

We want to hear your input on our proposed routes, as the routes have not been finalized. The purpose of our public engagement is to share, listen and learn in order to make appropriate project changes. The SCC also considers public input in its review process. There are multiple ways to share your feedback with our team:

- Contact us by email at [powerline@dominionenergy.com](mailto:powerline@dominionenergy.com) or by phone at 888-291-0190.
- Leave your comments in GeoVoice, our interactive mapping tool located on our project website.
- Attend our community meetings.
- Invite us to your community or property.



### FOR MORE INFORMATION

Visit our website at  
[DominionEnergy.com/westernchesterfieldET](https://DominionEnergy.com/westernchesterfieldET).  
You may also contact us by sending an email to  
[powerline@dominionenergy.com](mailto:powerline@dominionenergy.com) or calling 888-291-0190.



SCAN HERE  
TO LEARN  
MORE