

Yadkin - Fentress 500 kV Electric Transmission Rebuild Project

CITY OF CHESAPEAKE, VIRGINIA



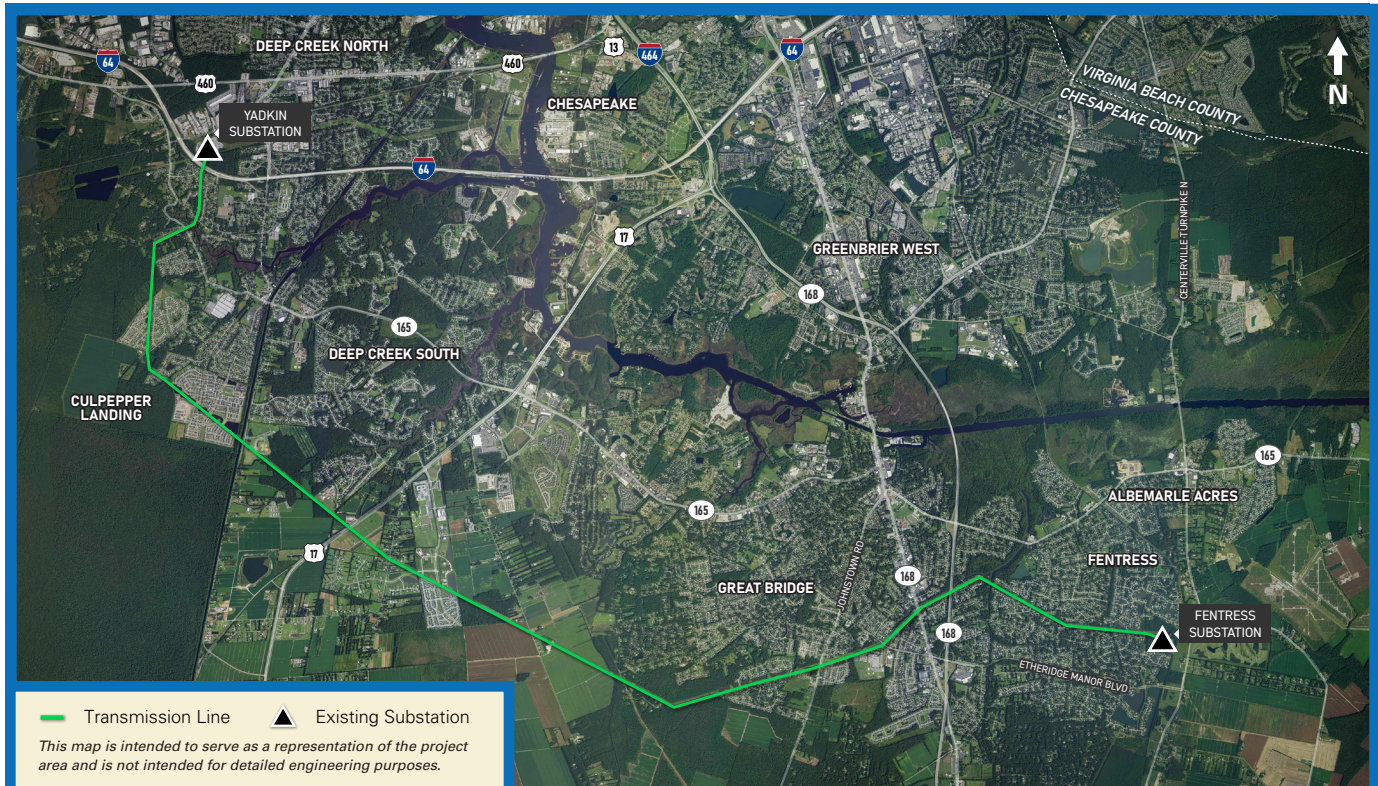
AT DOMINION ENERGY, we are committed to providing safe, reliable, and affordable electric service to the communities we proudly serve. The Yadkin-Fentress 500 kilovolt (kV) Electric Transmission Line Project proposes to rebuild the existing 500 kV transmission line that runs between our Yadkin Substation and Fentress Substation.



SCAN HERE to learn more and to explore the Structure Comparison Tool!

This project is needed to replace aging transmission structures to maintain reliability and to add additional infrastructure to deliver the renewable energy generated by the Coastal Virginia Offshore Wind (CVOW) project.

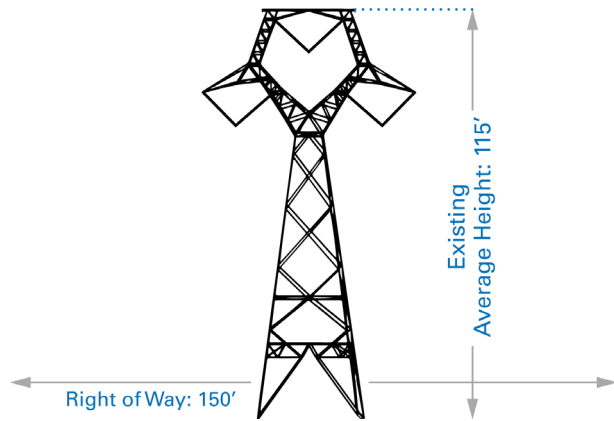
We are proposing to wreck the existing, aging 500 kV line, currently on lattice structures and build two 500 kV transmission lines on separate monopole structures. Changing the current lattice-type structures to taller monopoles will allow two independent transmission lines to be built without requiring new or expanded right of way. To maintain safety and operational clearances, the proposed monopole structure will increase in height by an average of 65 feet. This height increase also allows us to place the new structures in the same or similar locations as the old structures.



CONTINUED ON BACK

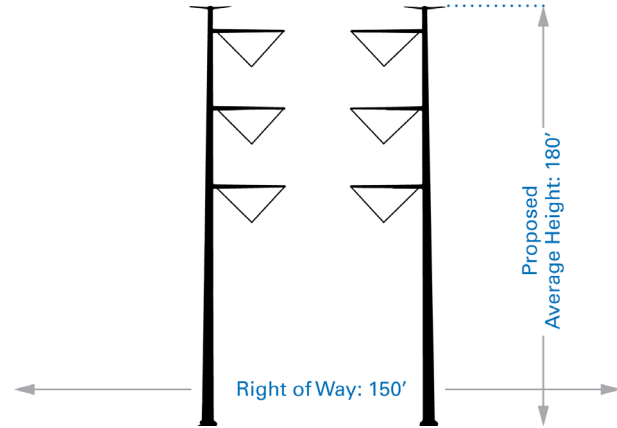
STRUCTURE TYPE

**EXISTING
Lattice Structure**



Weathering steel lattice structures
Average structure height: 115 feet
Right of Way: 150 feet

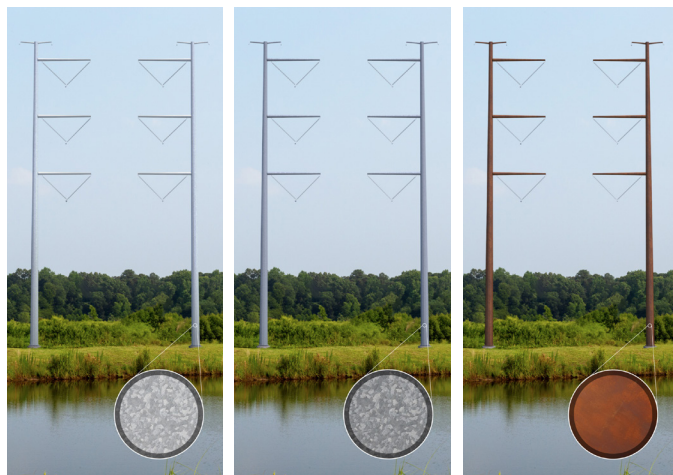
**PROPOSED
Monopole Structure**



Single Circuit Monopoles
Proposed average structure height: 180 feet
Average Height Increase: 65 feet

NOTE: New structures will be located in close proximity to existing structures. Proposed structure heights are based on preliminary engineering calculations and are subject to change with final engineering design. View each individual structure change using the structure comparison tool on our website.

PROPOSED STRUCTURE COLOR OPTIONS



Galvanized

Dull Galvanized

Corten

All structures and finish color depicted are for representation only.

- We surveyed the community to learn more about their preferences for structure finish.
- The finish can help mitigate the unavoidable visual change of the monopole structures.
- The results of this survey will be taken into consideration. However, Dominion Energy may present a preferred option as required by the Virginia State Corporation Commission (SCC).

PROJECT SCHEDULE SUBJECT TO CHANGE

DATE	ACTIVITY
January 2024	Project announcement
March 2024	Community meeting
Summer 2024	File application with the Virginia State Corporation Commission (SCC)
Early 2025	Anticipated SCC ruling
Spring 2025	Construction to begin
End of 2026	Construction complete, restoration begins



FOR MORE INFORMATION

Visit our website at DominionEnergy.com/YadkinFentress.
 You may also contact us by sending an email to powerline@dominionenergy.com or calling 888-291-0190.