

Gas Meter Protection

In heavy snowfall areas, a meter set should be placed in an area that will be protected from heavy snow accumulation and from snow sliding off roofs, such as:

- Inside of or underneath a structure,
- Under eaves or roof overhangs that extend at least 48 inches from the wall (see Figure A),
- Beneath gable-end or flat roofs with at least 16 inches to the outer end of the roof and at least 24 inches from where the gable intersects with a forward-sloping roof. (see Figure B).

Figure A

Meter set placement:

Under eaves or roof overhangs that extend at least 48 inches from the wall.

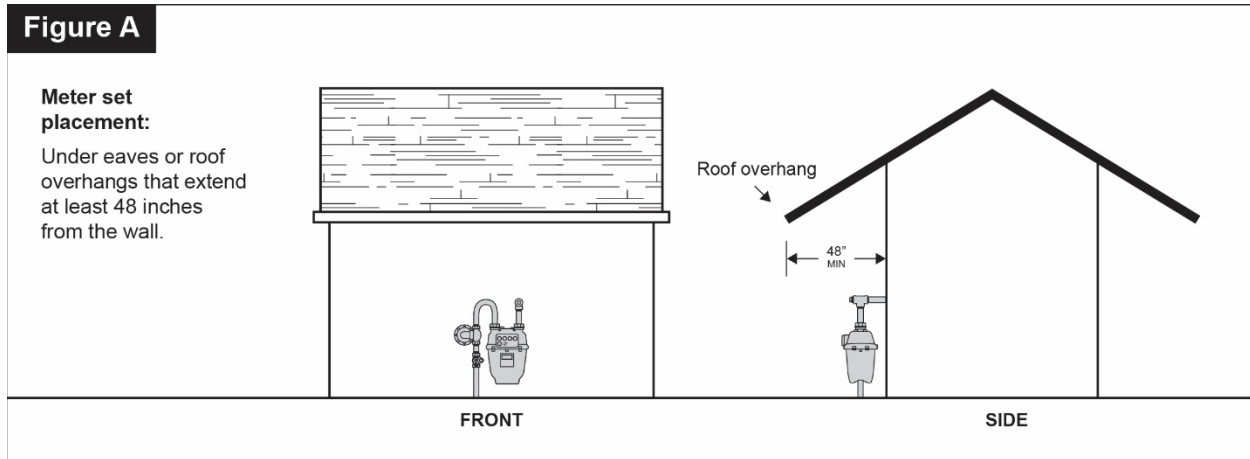
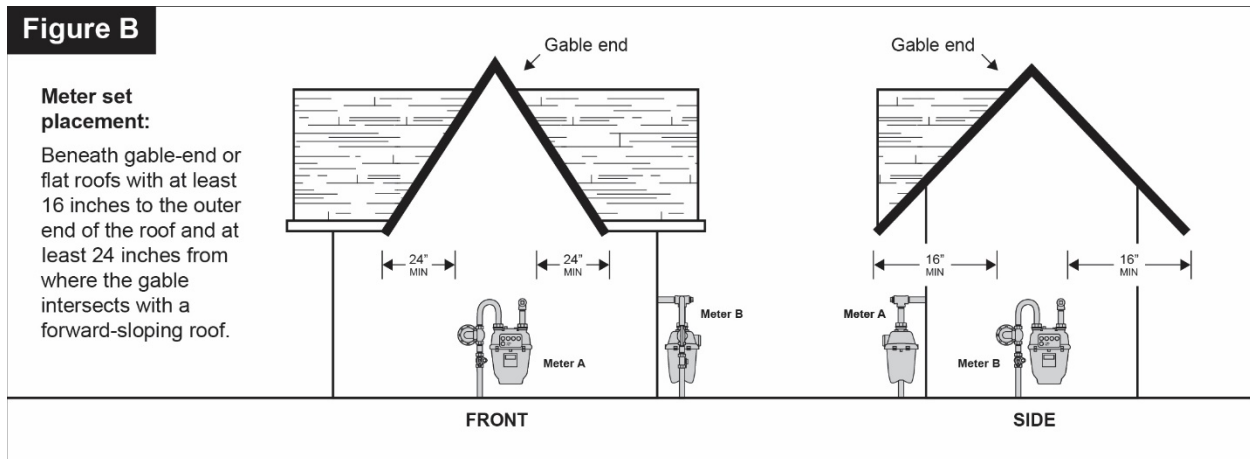


Figure B

Meter set placement:

Beneath gable-end or flat roofs with at least 16 inches to the outer end of the roof and at least 24 inches from where the gable intersects with a forward-sloping roof.



For typical residential meters, customer-constructed snow shelters should meet the guidelines in Figure C. Please consult with your Pre-Construction representative.

