

# **Dominion Energy CVOW Pilot Project**

## **Cable Trenching Activities LNTM**

### **April 27, 2020**

The following information is requested to assist in issuing appropriate Coast Guard Notices to Mariners:

**A. START AND STOP DATES:**

*Costal Virginia Offshore Wind (CVOW) Pilot project will start cable laying on the planned subsea cable route from shore off Camp Pendleton towards the offshore wind farm construction site approximately ~25 nautical miles east of Cape Henry.*

*The cable laying support trenching vessel SIEM DORADO will start at the cable beaching area at #1 WP and will trench the cable into the seabed working between #1WP near shore and #9WP 25 miles offshore. The cable trenching and installation works commences May 14, 2020 and will continue cable trenching and installation activities on the cable route until June 10, 2020 - weather permitting.*

**B. WATERWAY: GEOGRAPHIC LOCATION and LAT/LONG:**

*The Cable laying vessel SIEM DORADO will deploy the subsea cable on the seabed and will operate on the planned subsea cable route outlined by the following Waypoints positions: (WGS 84 Decimal degrees).*

*1WP 36.817122N - 075.955312W*

*2WP 36.819389N - 075.912311W*

*3WP 36.819470N - 075.876841W*

*4WP 36.807754N - 075.801396W*

*5WP 36.805830N - 075.748868W*

*6WP 36.828848N - 075.618577W*

*7WP 36.887909N - 075.497384W*

*8WP 36.886947N - 075.491633W*

*9WP 36.896352N - 075.491719W*

**C. SCOPE/NATURE OF THE PROJECT (dredging/marine construction, diving/surveying, shoreline restoration, bridge-related):**

*The Coastal Virginia Offshore Wind (CVOW) Pilot Project is being developed by Virginia Electric and Power Company, d/b/a Dominion Energy Virginia (Dominion) on behalf of the Virginia Department of Mines, Minerals, and Energy (DMME). Orsted is the EPC contractor for the construction of the windfarm.*

**D. MARINE CONTRACTOR/COMPANY PERFORMING WORK:**

*SEAWAY OFFSHORE CABLES will survey lay and trenches the cable on the planned cable route on behalf of Orsted*

**E. MARINE EQUIPMENT TO BE USED, THE TYPE, NAMES/NUMBERS & DIMENSIONS (barges, dredges, pipeline, support):**

*The Multi-Role Cable Installation Support Vessel SEAWAY DORADO are planned for the trenching of the cable and cable protection installation over cable crossings.*

*Length:310' Beam: 66' Draft: 22 GRT: 4869*

# Dominion Energy CVOW Pilot Project

## Cable Trenching Activities LNTM

### April 27, 2020

F. HOW MARINE EQUIPMENT WILL BE MARKED AND LIGHTED DURING REDUCED VISIBILITY/DARKNESS

*N/A*

G. HOW MARINE EQUIPMENT WILL BE MOORED ON SITE (anchored, spudded, moored to buoy, moored to bridge or other structure)

*N/A*

H. NAMES OF ATTENDING VESSELS ON SCENE (tugs/pusher boats, dive/crew boats):

*Up to 5 safety vessels will keep station along the cable route during the installation and trenching of the subsea cable.*

*BERTO L. MILLER – SAMANTHA MILLER – RANA MILLER - ROSMARY MILLER and SORENSEN MILLER will be positioned at cable crossings on the cable route until the subsea cable is fully buried.*

I. COMMUNICATIONS TO BE USED ON SCENE, SUCH AS MARINE BAND RADIO (VHF-FM), THE FREQUENCIES MONITORED, AND CALL SIGN:

*Call sign: SEAWAY DORADO*

*SEAWAY DORADO will monitor VHF 16 during the cable installation on the cable route.*

MARKERS/SIGNAGE EXPECTED ON SCENE, PERMITTED BY OTHER AGENCIES (buoys/pilings used for marking or warning purposes):

*Mariners transiting or fishing in the survey area are requested to give a wide berth to cable laying vessels which may be limited in their ability to manoeuvre due to the cable catenary and subsea row activities. Mariners should operate in a manner that will not endanger the vessel or its equipment - a 0.5NM clearance is requested.*

J. PROJECT SUPERVISOR NAME, TITLE AND 24-HR CONTACT NUMBER:

*Capt. Peder Rosenberg Pedersen*

*Orsted CVOW project*

*Offshore Operations Manager*

*PEDPE@Orsted.dk*

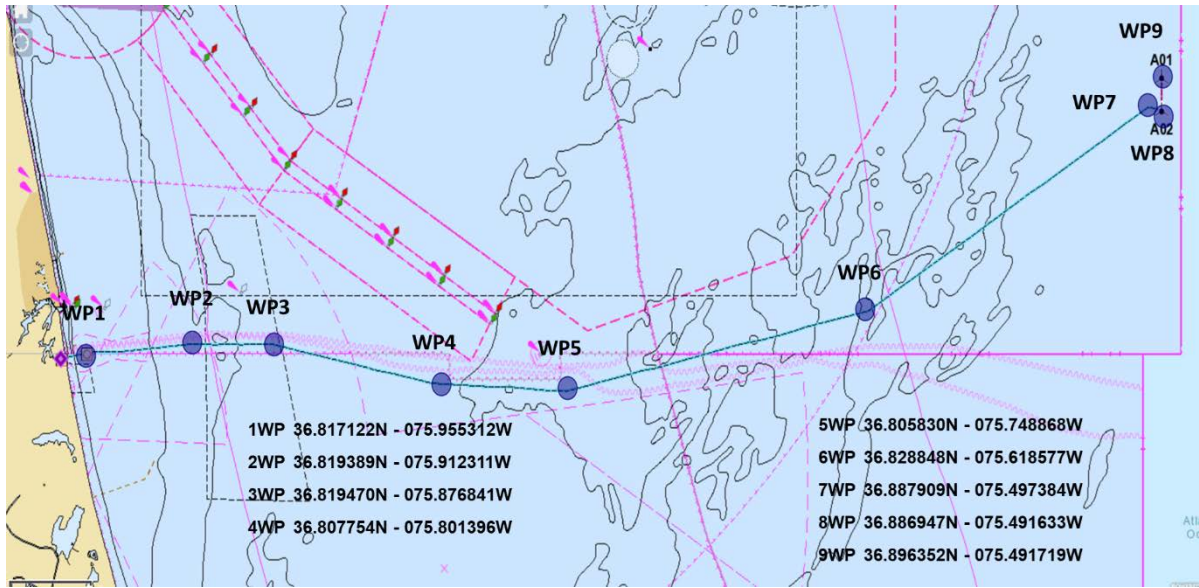
*1-757-334-4578*

# Dominion Energy CVOW Pilot Project

## Cable Trenching Activities LNTM

April 27, 2020

### CVOW Cable route overview



IMO: 9424508

MMSI: 311031800

Call sign: C6YG5

Flag: Bahamas [BS]

Gross Tonnage: 4869

Summer DWT: 4214 t

Length Overall x Breadth Extreme: 94m x 20m

Year built: 2009