

Dominion Energy CVOW Pilot Project

RAM VX HDD Activities LNTM

April 27, 2020

The following information is requested to assist in issuing appropriate Coast Guard Notices to Mariners:

A. START AND STOP DATES:

Costal Virginia Offshore Wind (CVOW) Pilot Project will start cable laying on the planned subsea cable route from shore off Camp Pendleton towards the offshore wind farm construction site approximately ~25 nautical miles east of Cape Henry.

The self-propelled Lift boat RAM XV starts diver operations survey and subsea diving works at the cable beaching area at #1WP

Ram XV will be in position and jack up at April 30, 2020 - and will continue subsea work scopes until May 23, 2020 - weather permitting.

B. WATERWAY: GEOGRAPHIC LOCATION and LAT/LONG:

RAM XV will regular have divers in the water and excavating the HDD duct for the subsea cable pull in operation.

RAM XV will operate in approximate position: (WGS 84 Decimal degrees) 36.817122N - 075.955312W

C. SCOPE/NATURE OF THE PROJECT (dredging/marine construction, diving/surveying, shoreline restoration, bridge-related):

The Coastal Virginia Offshore Wind (CVOW) Pilot Project is being developed by Virginia Electric and Power Company, d/b/a Dominion Energy Virginia (Dominion) on behalf of the Virginia Department of Mines, Minerals, and Energy (DMME). Orsted is the EPC contractor for the construction of the windfarm.

D. MARINE CONTRACTOR/COMPANY PERFORMING WORK:

ARIES MARINE Cooperation doing the preparatory HDD excavation and dive works needed for the subsea cable pull in operation on behalf of Orsted.

E. MARINE EQUIPMENT TO BE USED, THE TYPE, NAMES/NUMBERS & DIMENSIONS (barges, dredges, pipeline, support):

RAM XV: Length: 112` Beam: 66' GRT: 497

F. HOW MARINE EQUIPMENT WILL BE MARKED AND LIGHTED DURING REDUCED VISIBILITY/DARKNESS

N/A

G. HOW MARINE EQUIPMENT WILL BE MOORED ON SITE (anchored, spudded, moored to buoy, moored to bridge or other structure)

N/A

H. NAMES OF ATTENDING VESSELS ON SCENE (tugs/pusher boats, dive/crew boats):

N/A

Dominion Energy CVOW Pilot Project

RAM VX HDD Activities LNTM

April 27, 2020

- I. COMMUNICATIONS TO BE USED ON SCENE, SUCH AS MARINE BAND RADIO (VHF-FM), THE FREQUENCIES MONITORED, AND CALL SIGN:

Call sign: RAM XV

RAM XV will monitor VHF 16 during the operation.

- J. MARKERS/SIGNAGE EXPECTED ON SCENE, PERMITTED BY OTHER AGENCIES (buoys/pilings used for marking or warning purposes):

6 yellow Special Mark buoys will identify a near shore work zone where the subsea cable will be installed. The near shore work zone is approximately 0.5 to 1 nautical mile off the coastline off Camp Pendleton at Virginia Beach, Virginia.

The buoys are yellow Sealite # SL-B700-RB-Y 12" dia.can x 28"dia regulatory buoys. And shows yellow flash period 4 seconds with a flash length 0.5 second. The lights will be visible up to 3 nautical miles.

ID 1: Latitude 36.81758618 North - Longitude 75.9588702 West

ID 2: Latitude 36.81827894 North - Longitude 75.95159114 West

ID 3: Latitude 36.81848040 North - Longitude 75.94542453 West

ID 4: Latitude 36.81577617 North - Longitude 75.94539127 West

ID 5: Latitude 36.81566732 North - Longitude 75.95155881 West

ID 6: Latitude 36.81561423 North - Longitude 75.95884564 West

Mariners transiting or fishing in the area are requested to give a wide berth to RAM XV lift boat while positioning and working at the location. There will be divers in the waters on regular basis and Mariners should operate in a manner that will not endanger the vessel or subsea works - a 0.5NM clearance is requested and avoid transit through the demarcated work zone during cable installation works.

- K. PROJECT SUPERVISOR NAME, TITLE AND 24-HR CONTACT NUMBER:

Capt. Peder Rosenberg Pedersen

Orsted CVOW project

Offshore Operations Manager

PEDPE@Orsted.dk

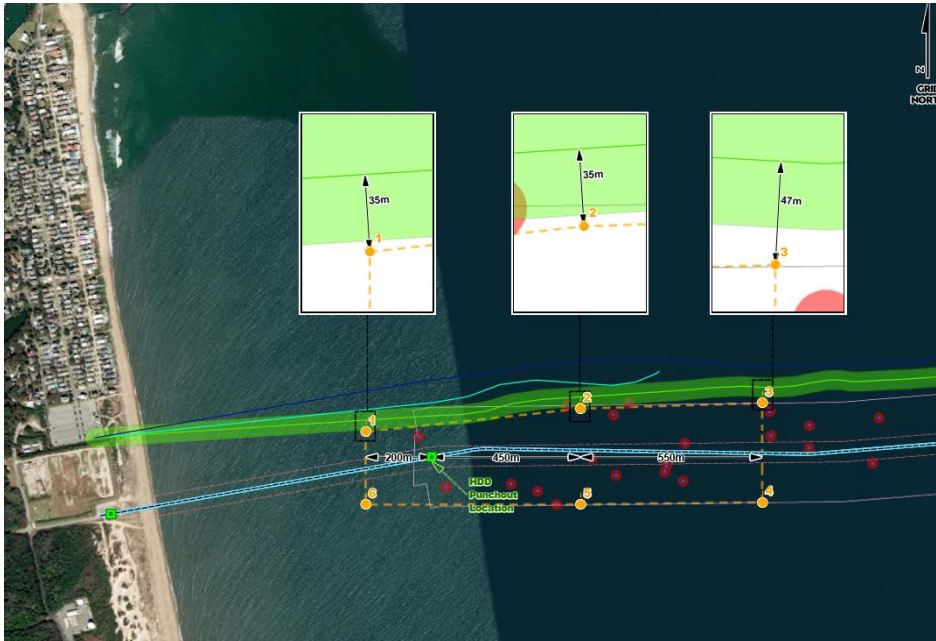
1-757-334-4578

Dominion Energy CVOW Pilot Project

RAM VX HDD Activities LNTM

April 27, 2020

CVOW - HDD subsea work zone for RAM XV



RAM XV

IMO: 8767305

MMSI: 366878290

Call Sign: WDB2653

Flag: USA [US]

Gross Tonnage: 497 t

Length x Breadth Extreme: 33.6 x 19.66 m

Year built: 2002