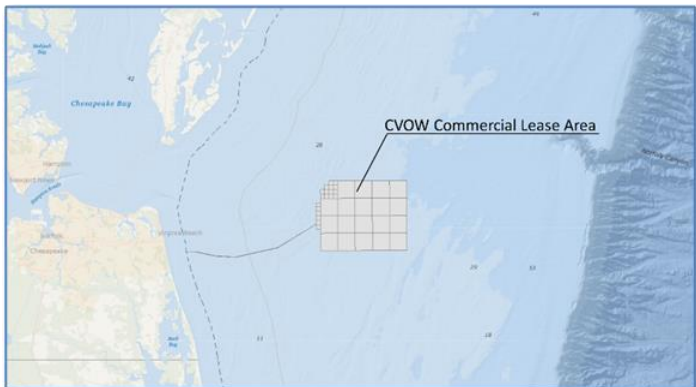


COASTAL VIRGINIA OFFSHORE WIND (CVOW) COMMERCIAL PROJECT SURVEY UPDATE – MAY/JUNE 2020

Attention Fishermen and Other Mariners

The CVOW Commercial Lease (OCS-A 0483) is located in federal waters of the Outer Continental Shelf (OCS), about 24 nautical miles off Virginia Beach.



Dominion Energy will be conducting marine geophysical and geotechnical (G&G) surveys of in the lease area and along the export cable corridor through the summer of 2020.

There will be six (6) separate vessels operating in the area at various times throughout the summer as weather and operational schedules allow. Some vessels will be equipped with hull mounted and towed equipment to collect geophysical data while others will conduct geotechnical and benthic sampling at site specific locations. Vessels will work on a 24hr basis, seven days a week. Please reference the Local Notice to Mariners for additional details regarding this work.

Commercial fishermen planning to deploy fixed gear (e.g., pots, gillnets, etc.) or work mobile gear in the vicinity of the planned operations should contact the Fisheries Liaisons to coordinate activities. Temporary relocation of fixed gear, away from operational areas, may be requested.

Dominion Energy will engage local fishing vessels as Scout Boats to help avoid any fishing gear conflicts. If you suspect your gear has been damaged by survey activity, please contact the designated Fisheries Liaisons.

Vessels Conducting Activities

- Sarah Bordelon: LOA 170' (Geophysical)
 - MMSI: 367780870; Call sign: WDJ4762
- Marcelle Bordelon: LOA 170' (Geophysical)
 - MMSI: 367078110; Call Sign: WDJ2038



- R/V Shearwater: LOA 109' (Geophysical)
 - MMSI: 368528000; Call Sign: WDF5838



- Geoquip Speer: LOA 275' (Geotechnical)
 - MMSI: 538004141; Call Sign: V7VK4



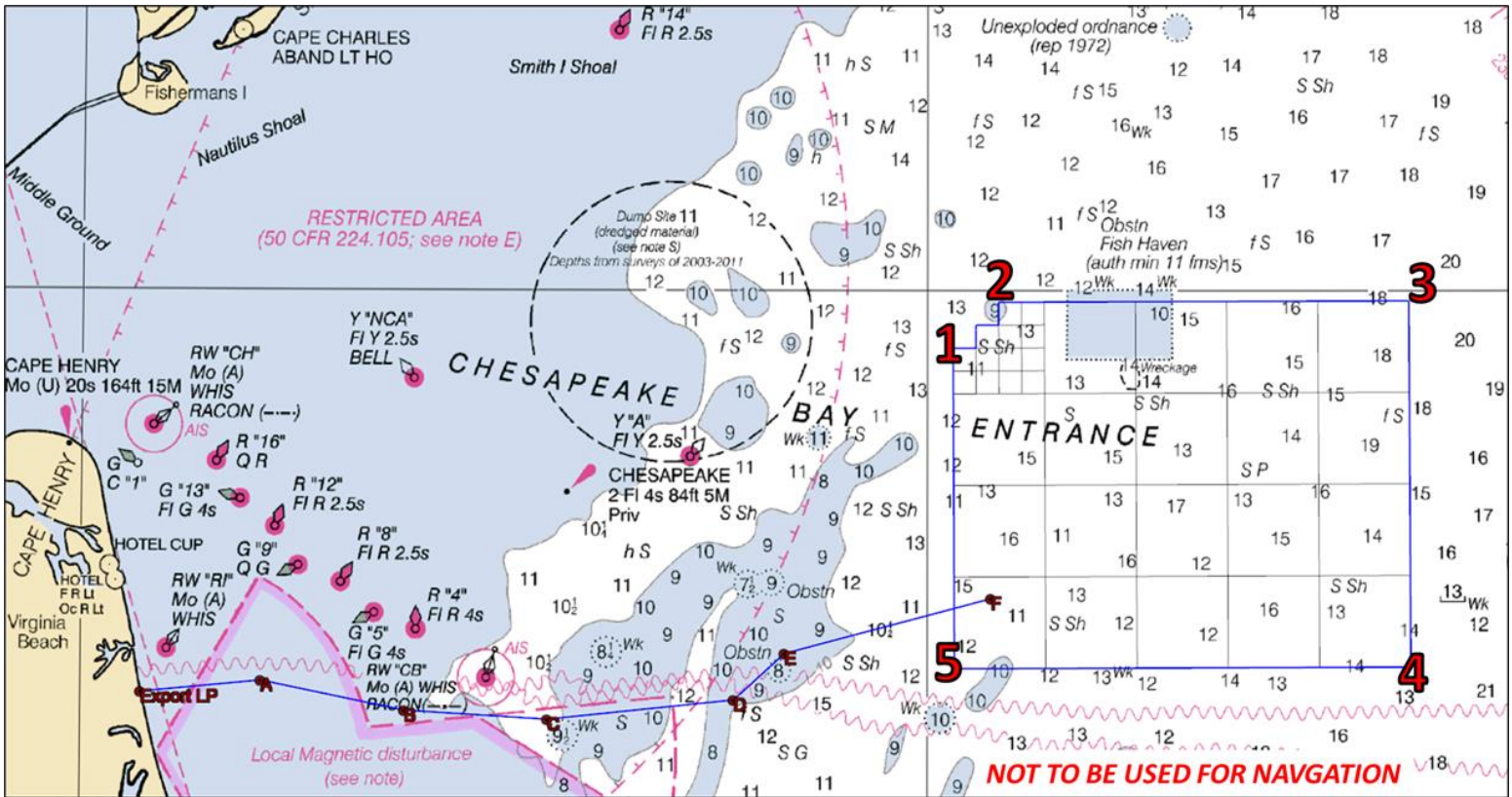
- Geoquip Saentis: LOA 265' (Geotechnical)
 - MMSI: 311963000; Call Sign: C6UM8



- Dina Polaris: LOA 325' (Geotechnical)
 - MMSI: 257006530; Call Sign: LAXB7



COASTAL VIRGINIA OFFSHORE WIND (CVOW) COMMERCIAL PROJECT SURVEY UPDATE – MAY/JUNE 2020



Survey vessels will monitor VHF Channels 16 & 13 if direct bridge-to-bridge communications are required.

Approximate Lease Area Coordinates			
WP	Latitude (Deg MM.mm)	Longitude (Deg MM.mm)	Approx. Depth (ft)
1	36° 58.39'N	75° 29.12'W	72
2	36° 59.69'N	75° 27.51'W	60
3	36° 59.73'N	75° 12.94'W	110
4	36° 49.35'N	75° 12.92'W	84
5	36° 49.30'N	75° 29.06'W	78

Approximate Export Cable Corridor Coordinates			
WP	Latitude (Deg MM.mm)	Longitude (Deg MM.mm)	Approx. Depth (ft)
LP	36° 48.57'N	75° 57.88'W	0
A	36° 48.91'N	75° 53.61'W	36
B	36° 48.08'N	75° 48.52'W	57
C	36° 47.84'N	75° 43.46'W	67
D	36° 48.41'N	75° 36.87'W	59
E	36° 49.73'N	75° 35.07'W	56
F	36° 51.29'N	75° 27.77'W	85

Mariners transiting or fishing in the survey area are requested to give a wide berth to survey vessels which may be limited in their ability to maneuver and towing gear up to 1,000' behind the vessel. Mariners should operate in a manner that will not endanger the vessel or its equipment, a 0.5NM clearance is requested.

Fisheries Liaison Officers
Sea Risk Solutions, LLC
24-Hour Contact:
Wolfgang Rain - (206) 427-6553; wrain@searisksolutions.com
Ron Larsen - (570) 242-5023; ronlarsen@searisksolutions.com

Dominion Energy:
 Scott Lawton (Environmental)
Scott.Lawton@dominionenergy.com
 Lloyd Eley (Project Management)
Lloyd.J.Eley@dominionenergy.com

Additional Project details and updates can be found on the Dominion Energy Coastal Virginia Offshore Wind website: <https://www.dominionenergy.com/cvow>