

COASTAL VIRGINIA OFFSHORE WIND (CVOW) COMMERCIAL PROJECT SURVEY UPDATE – APRIL 2020

2020 Offshore Survey Activities

Attention Fishermen and Other Mariners: Survey activities for the Coastal Virginia Offshore Wind Commercial (CVOW Commercial) Project will begin in April 2020.

As part of the site development process, geophysical & geotechnical surveys will be conducted over the project area and along the potential export cable corridor. Initially, there will be two (2) separate vessels conducting survey operations:

- M/V Sarah Bordelon - LOA 170'
 - MMSI: 367780870; Call Sign: WDJ4762
- M/V Marcelle Bordelon - LOA 170'
 - MMSI: 367078110; Call Sign: WDJ2038

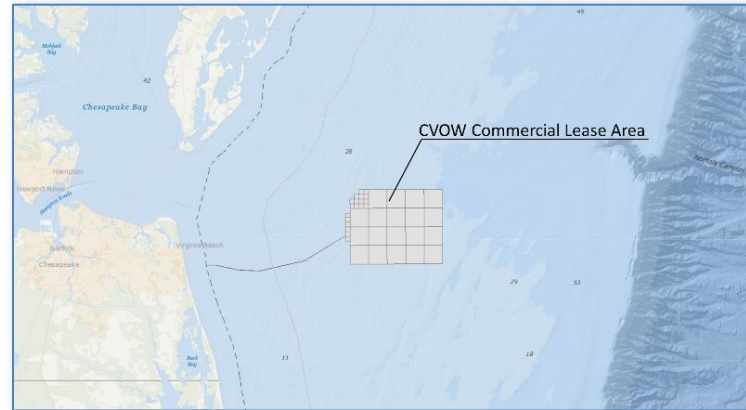
The vessels will be equipped with hull mounted and towed equipment for geophysical data collection, along with additional equipment to be deployed at specific locations to conduct geotechnical and benthic sampling. Drop down camera and video equipment will also be used as part of the benthic assessment. They will work on a 24hr basis, seven days a week. Please reference the Local Notice to Mariners for additional details regarding this work.

Commercial fishermen planning to deploy fixed gear (e.g., pots, gillnets, etc.) or work mobile gear in the vicinity of the CVOW Lease Area should contact the designated Fisheries Liaisons in order to coordinate activities. Temporary relocation of fixed gear, away from the survey area, may be requested.

Dominion will engage local fishing vessels as Scout Boats to help avoid any fishing gear conflicts. In the unlikely event that the survey vessel has an interaction with fishing gear, procedures are in place to notify the owner if the gear is marked. If you suspect your gear has been damaged by the survey vessel, please immediately contact the designated Fisheries Liaisons.

CVOW Commercial Lease Area

The CVOW Commercial Lease (OCS-A 0483) is approximately 24 nautical miles east of Virginia Beach in federal waters on the Atlantic Outer Continental Shelf (OCS).



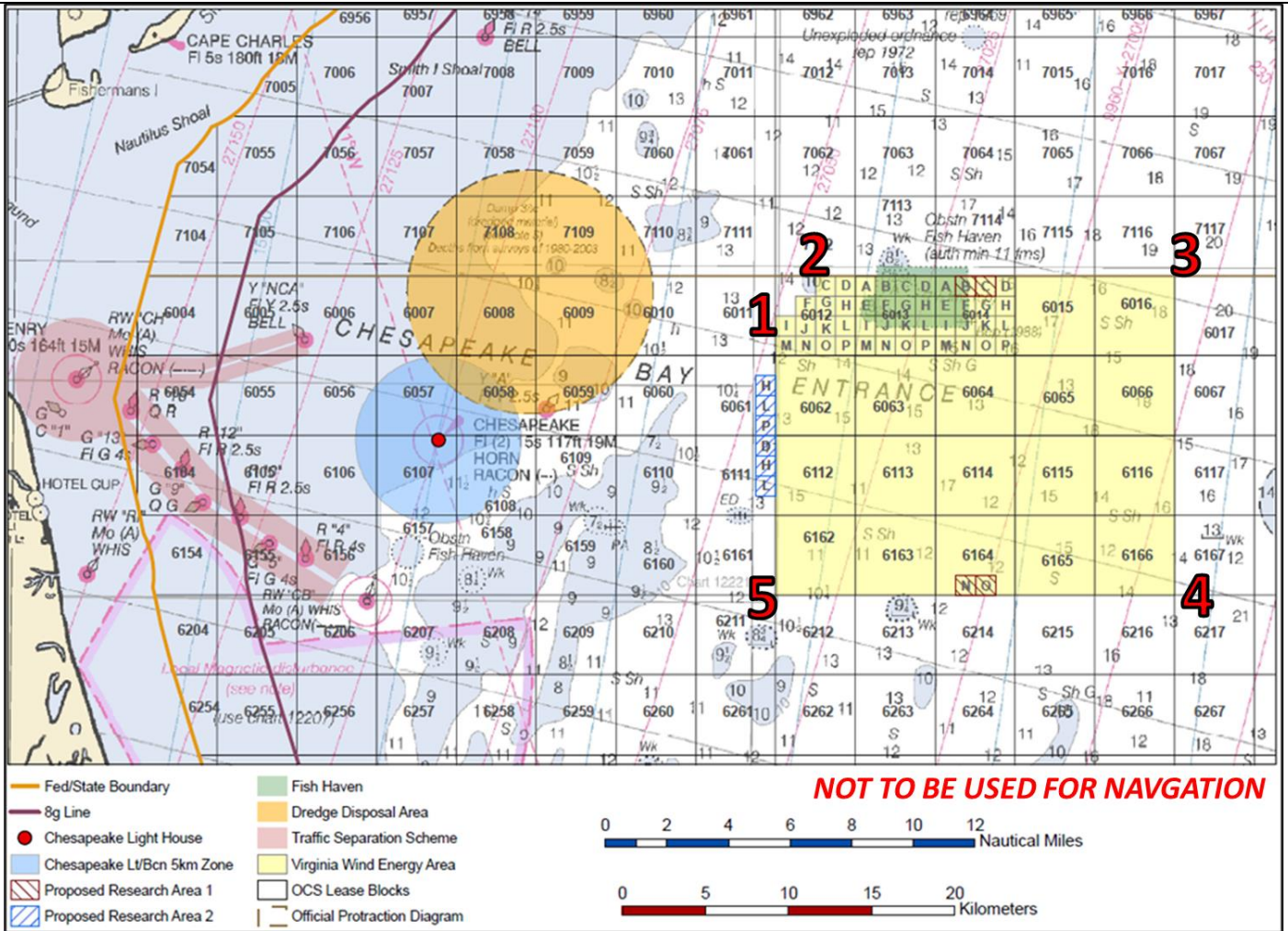
The Lease Area encompasses approximately 112,800 acres (~175 square miles) and covers depths from approximately 60' to 120'. Lease area coordinates (approximated) are given in the table below, it is suggested that mariners enter the coordinates into their navigation software.

Approximate WGS84 Coordinates (Deg MM.mm)			
WP	Latitude	Longitude	Approx. Depth (ft)
1	36° 58.39'N	75° 29.12'W	72
2	36° 59.69'N	75° 27.51'W	60
3	36° 59.73'N	75° 12.94'W	110
4	36° 49.35'N	75° 12.92'W	84
5	36° 49.30'N	75° 29.06'W	78

Project details and updates can be found on the Dominion Energy Coastal Virginia Offshore Wind website:

www.dominionenergy.com/cvow/

COASTAL VIRGINIA OFFSHORE WIND (CVOW) COMMERCIAL PROJECT SURVEY UPDATE – APRIL 2020



Survey vessels will monitor VHF Channels 16 & 13 if direct bridge-to-bridge communications are required.



Mariners transiting or fishing in the survey area are requested to give a wide berth to survey vessels which may be limited in their ability to maneuver and towing gear up to 1,000' behind the vessel. Mariners should operate in a manner that will not endanger the vessel or its equipment, a 0.5NM clearance is requested.

Fisheries Liaison Officers

Sea Risk Solutions, LLC

24-Hour Contact:

Wolfgang Rain - (206) 427-6553; wrain@searisksolutions.com

Ron Larsen - (570) 242-5023; ronlarsen@searisksolutions.com

Dominion Energy:

Scott Lawton (Environmental)

Scott.Lawton@dominionenergy.com

Lloyd Eley (Project Management)

Lloyd.J.Eley@dominionenergy.com