

# COASTAL VIRGINIA OFFSHORE WIND (CVOW) PILOT PROJECT UPDATE – APRIL 2020

## 2020 Offshore Activities

### Attention Fishermen and Other Mariners

Dominion Energy will begin pre-construction activities for the Coastal Virginia Offshore Wind (CVOW) Pilot Project in April 2020. Construction activities will begin in May 2020 and continue through the Summer of 2020.

### Pre-installation Cable Route Survey

Ahead of the planned export cable installation activity, a survey of the subsea cable route from shore off Camp Pendleton towards the offshore construction site will be conducted.

The vessel conducting the activities will be:

- R/V SHEARWATER - LOA 110'
  - MMSI: 368528000; Call Sign: WDF5838

The vessel will be equipped with hull mounted and towed equipment for geophysical data collection, along with additional equipment that may be deployed at specific locations to conduct geotechnical and benthic sampling. They will work on a 24hr basis, seven days a week. Please reference the Local Notice to Mariners for additional details.

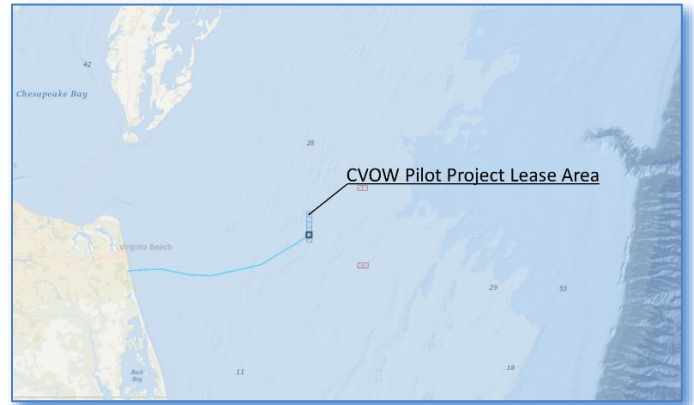
Commercial fishermen planning to deploy fixed gear (e.g., pots, gillnets, etc.) or work mobile gear in the vicinity of the planned operations should contact the Fisheries Liaisons to coordinate activities. Temporary relocation of fixed gear, away from the operational areas, may be requested.

Dominion will engage local fishing vessels as Scout Boats to help avoid any fishing gear conflicts. In the unlikely event that the survey vessel has an interaction with fishing gear, procedures are in place to notify the owner if the gear is marked. If you suspect your gear has been damaged by the survey vessel, please immediately contact the Fisheries Liaisons.

Project details and updates can be found on the Dominion Energy Coastal Virginia Offshore Wind website: <https://www.dominionenergy.com/cvow>

## CVOW Pilot Project

The CVOW Pilot Project is about 24 nautical miles east of Virginia Beach in federal waters of the Atlantic Outer Continental Shelf (OCS).



Coordinates (approximated) for the cable route are given in the table below:

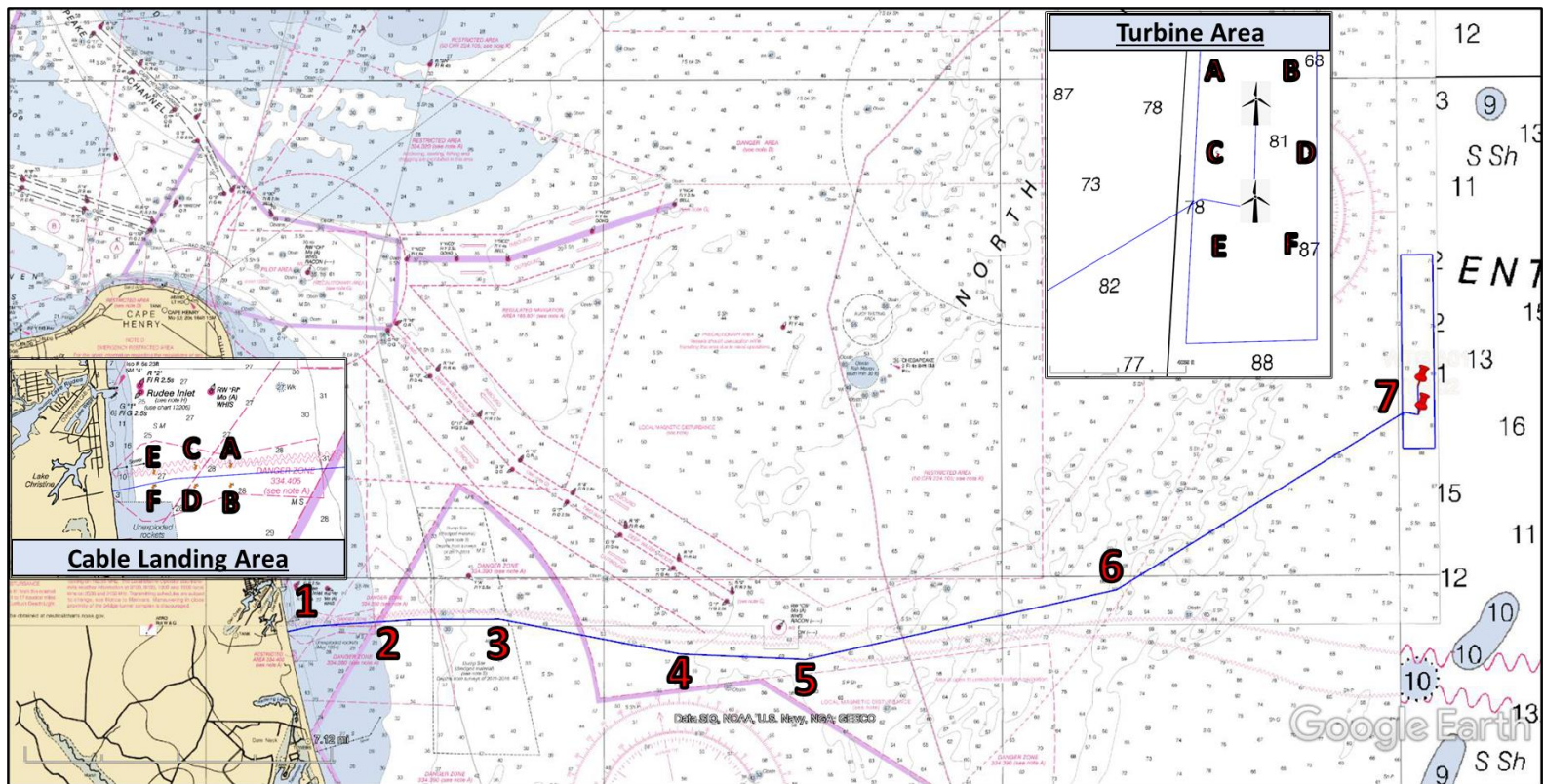
Export Cable Route WGS84 Coordinates (Deg MM.mm)			
WP	Latitude	Longitude	Depth (ft)
1	36° 49.03'N	75° 57.32'W	27
2	36° 49.16'N	75° 54.74'W	33
3	36° 49.17'N	75° 52.61'W	48
4	36° 48.47'N	75° 48.08'W	57
5	36° 48.35'N	75° 44.93'W	65
6	36° 49.73'N	75° 37.11'W	59
7	36° 53.27'N	75° 29.84'W	78

Additionally, lighted buoys have been placed to designate planned work areas near the Camp Pendleton cable landing area and the offshore area where the wind turbines will be located:

Cable Landing Area Lighted Buoys WGS84 Coordinates			
WP	Latitude	Longitude	Depth (ft)
A	36° 49.11'N	75° 56.73'W	28
B	36° 48.95'N	75° 56.72'W	28
C	36° 49.10'N	75° 57.10'W	28
D	36° 48.94'N	75° 57.10'W	28
E	36° 49.06'N	75° 57.53'W	28
F	36° 48.94'N	75° 57.53'W	28

Turbine Area Lighted Buoys WGS84 Coordinates			
WP	Latitude	Longitude	Depth (ft)
A	36° 53.96'N	75° 29.76'W	73
B	36° 53.96'N	75° 29.27'W	68
C	36° 53.49'N	75° 29.75'W	80
D	36° 53.50'N	75° 29.15'W	81
E	36° 53.02'N	75° 29.75'W	80
F	36° 53.03'N	75° 29.26'W	87

# COASTAL VIRGINIA OFFSHORE WIND (CVOW) PILOT PROJECT UPDATE – APRIL 2020



**NOT FOR NAVIGATIONAL USE**

*Survey vessels will monitor VHF Channels 16 & 13 if direct bridge-to-bridge communications are required.*

## R/V SHEARWATER

LOA 109'

MMSI: 368528000

Call Sign: WDF5838



*Mariners transiting or fishing in the survey area are requested to give a wide berth to survey vessels which may be limited in their ability to maneuver and towing gear up to 1,000' behind the vessel. Mariners should operate in a manner that will not endanger the vessel or its equipment, a 0.5NM clearance is requested.*

### Fisheries Liaison Officers

*Sea Risk Solutions, LLC*

**24-Hour Contact:**

Wolfgang Rain - (206) 427-6553; [wrain@searisksolutions.com](mailto:wrain@searisksolutions.com)

Ron Larsen - (570) 242-5023; [ronlarsen@searisksolutions.com](mailto:ronlarsen@searisksolutions.com)

### Dominion Energy:

Scott Lawton (Environmental)

[Scott.Lawton@dominionenergy.com](mailto:Scott.Lawton@dominionenergy.com)

Lloyd Eley (Project Management)

[Lloyd.J.Eley@dominionenergy.com](mailto:Lloyd.J.Eley@dominionenergy.com)