



U.S. Department
of Homeland Security
**United States
Coast Guard**

LOCAL NOTICE TO MARINERS

District: 5

Week: 17/20

COASTAL WATERS FROM SHREWSBURY RIVER, NEW JERSEY TO LITTLE RIVER, SOUTH CAROLINA

The Local Notice to Mariners contains all information relevant to the waterways within the Fifth Coast Guard District and is updated each Tuesday on the U.S. Coast Guard Navigation Center website at <https://www.navcen.uscg.gov/>.

If you have questions about the Fifth Coast Guard District Local Notice to Mariners (LNM), please contact:

COMMANDER
FIFTH COAST GUARD DISTRICT (dpw)
431 Crawford Street
Portsmouth, Virginia 23704

or for correspondence and article requests:
ward.b.posey@uscg.mil, (757) 398-6229 and CGD5Waterways@uscg.mil

All bearings are in degrees TRUE - All times are in Local Time unless otherwise noted.

AIDS TO NAVIGATION DISCREPANCY REPORTING

To report any Aids to Navigation discrepancies (missing, damaged, extinguished lights, off station), shoaling or hazards to navigation, discrepancies to bridge lighting, please contact the following 24 hour numbers:

1. For PA, NJ, DE waters, coastal and tributaries contact COGARD SECTOR DELAWARE BAY at (215) 271-4940.
2. For MD, DE in the Upper Chesapeake Bay and tributaries contact COGARD SECTOR MARYLAND NATIONAL CAPITAL REGION at (410) 576-2525.
3. For VA in Lower Chesapeake Bay below Smith Point Light and tributaries and VA, MD Eastern Shore Bay and coastal contact COGARD SECTOR VIRGINIA at (757) 483-8567.
4. For NC waters, coastal and tributaries contact COGARD SECTOR NORTH CAROLINA at (910) 343-3882.

REFERENCES

Light List: ATLANTIC COAST, VOLUME II, COMDTPUB P16502.2, 2020 Edition.
U.S. Coast Pilot 3, Atlantic Coast: Sandy Hook, NJ to Cape Henry, VA, 2020 (53ed) Edition.
U.S. Coast Pilot 4, Atlantic Coast: Cape Henry, VA to Key West, FL, 2019 (51st) Edition.

NAVIGATION INTERNET SITES

2020 Light List/ Weekly Updates.
<https://www.navcen.uscg.gov/pdf/lightLists/weeklyUpdates/v2d05WeeklyChanges.pdf>

Bridges Public Notice Website.
<https://www.navcen.uscg.gov/>

NOAA Chart Corrections and Chart Viewer
<http://www.nauticalcharts.noaa.gov>

Coast Pilots, along with corrections are available at
<https://nauticalcharts.noaa.gov/publications/coast-pilot/index.html>

D5 LNM Archived Back Issues
<https://www.navcen.uscg.gov/>

Chesapeake Bay NOAA Weather Buoys
www.buoybay.noaa.gov

Tides, Currents, PORTS
<http://www.tidesandcurrents.noaa.gov>

Weather
<http://www.weather.gov>

******VA – PAMUNKEY AND MATTAPONI RIVERS - US33 LORD DELAWARE BRIDGE - INSPECTION******

across Mattaponi River, at mile 0.8, in King and Queen County, VA. The inspection will be conducted between Monday, May 4, 2020, and Friday, May 15, 2020; Mon-Fri; from 8 a.m. to 4 p.m. The bridge inspection will require an under-bridge inspection vehicle (snooper) reducing the vertical clearance by five feet and a safety boat to work in and around the navigable channel. The safety boat will be monitoring VHF channels 13 and 16, and the boat captain can be reached at (804) 436-4338. The safety boat and snooper truck can both relocate with 10 minutes notice. Mariners should use caution when transiting the area.

Chart 12244

LNM: 17/20

******VA – OFFSHORE – CAPE HENRY – SURVEY******

UPDATED OPERATION DATES. The Survey vessel SARHA BORDELON will be conducting surveys in the in the following areas until approximately 15 Aug 2020.

Center of main survey area: 36 - 54.564'N 75 - 21.166'W

Main survey area stretches from 36 - 49' N to 36 - 59'N and 75 - 29' W to 75 - 13' W.

The survey vessel will be mapping the seabed with hull mounted sensors as well as towed sensors. The vessel will be working with restricted/limited maneuverability with equipment in tow up to 1000 feet to the stern of the vessel. The master requests a CPA of 0.5 – 1.0 mile to accommodate operations. SARAH BORDELON will monitor VHF 16 & 13 during the survey. For more information or questions, contact Mark Maclean at 902-412-1780.

Chart 12200

LNM: 14/20

******VA – OFFSHORE - CAPE HENRY – VIRGINIA BEACH – CABLE LAYING******

The Costal Virginia Offshore Wind (CVOW) Pilot project will start cable laying operations on the planned subsea cable route from shore off Camp Pendleton towards the offshore wind farm construction site approximately ~25 nautical miles east of Cape Henry. The cable laying vessels SIEM AIMERY and SIEM DORADO will start the cable laying and trenching at the cable beaching area at #1 WP and will lay the cable on the seabed working between #1WP near shore and #9WP 25 miles offshore. The cable laying commences May 4, 2020 - and will continue cable laying activities on the cable route until Jun 10, 2020- weather permitting.

The Cable laying vessel SIEM AIMERY will deploy the subsea cable on the seabed and will operate on the planned subsea cable route outlined by the following Waypoints positions: (WGS 84 Decimal degrees).

1WP 36.817122N - 075.955312W

2WP 36.819389N - 075.912311W

3WP 36.819470N - 075.876841W

4WP 36.807754N - 075.801396W

5WP 36.805830N - 075.748868W

6WP 36.828848N - 075.618577W

7WP 36.887909N - 075.497384W

8WP 36.886947N - 075.491633W

9WP 36.896352N - 075.491719W

Up to 5 safety vessels will keep station along the cable route during the installation of the subsea cable. BERTO L. MILLER – SAMANTHA MILLER – RANA MILLER - ROSMARY MILLER and SORENSEN MILLER. For questions or additional information contact Capt. Peder Rosenberg Pedersen, Orsted CVOW project, PEDPE@Orsted.dk, 1-757-334-4578.

Chart 12200

LNM: 14/20

******VA – OFFSHORE - CAPE HENRY – VIRGINIA BEACH – CABLE SURVEY******

Costal Virginia Offshore Wind (CVOW) Pilot project will start cable laying on the planned subsea cable route from shore off Camp Pendleton towards the offshore wind farm construction site approximately ~25 nautical miles east of Cape Henry. The cable survey vessel SHEARWATER starts the survey at the cable beaching area at #1WP near shore and continue out to #9WP 25 miles offshore. The post lay survey of the cable starts May 18, 2020 - and will continue until May 23, 2020 - weather permitting. SHEARWATER will survey the deployed and trenched subsea cable in the seabed and will operate on the planned subsea cable route outlined by the following Waypoints positions: (WGS 84 Decimal degrees).

1WP 36.817122N - 075.955312W

2WP 36.819389N - 075.912311W

3WP 36.819470N - 075.876841W

4WP 36.807754N - 075.801396W

5WP 36.805830N - 075.748868W

6WP 36.828848N - 075.618577W

7WP 36.887909N - 075.497384W

8WP 36.886947N - 075.491633W

9WP 36.896352N - 075.491719W Please see Enclosure 9. For questions or additional information contact Capt. Peder Rosenberg Pedersen, Orsted CVOW project, PEDPE@Orsted.dk, 1-757-334-4578.

Chart 12200

LNM: 14/20

******VA – OFFSHORE - CAPE HENRY – DEMARCATON BUOYS******

UPDATED INFORMATION. The Costal Virginia Offshore Wind (CVOW) Pilot project will deploy 5 yellow Special Mark demarcation buoys to identify the offshore work zone (WTG site) where the Wind Turbines and foundations will be installed. The offshore work zone is established approximately 25 nautical miles east of Cape Henry. The deployment of the buoys is expected to occur between April 2 and April 8, 2020 - weather permitting. The buoys will be moored in the listed positions and until construction activities are finalized. Retrieval of the buoys are planned to occur on or before September 30, 2020. The project will also deploy a wave/demarcation buoy at the WTG site. The deployment of the wave buoy is expected to occur the week of March 23, 2020, weather permitting and will be moored in the position until September 30, 2020. The wave buoy will also serve as a demarcation buoy.

A: Latitude 36.89930272 North - Longitude 75.49596563 West

C: Latitude 36.89151042 North - Longitude 75.49586571 West

E: Latitude 36.88371811 North - Longitude 75.49576582 West

B: Latitude 36.89937589 North - Longitude 75.4878969 West

D: Latitude 36.89166000 North - Longitude 75.48576900 West, Wave Buoy

F: Latitude 36.88375170 North - Longitude 75.48764900 West

For questions or additional information contact Capt. Peder Rosenberg Pedersen, Orsted CVOW project, PEDPE@Orsted.dk, 1-757-334-4578.

Chart 12200

LNM: 10/20

VA – VIRGINIA BEACH – RUDEE INLET – MARINE CONSTRUCTION

Precom Marine will be conducting Marine Construction Operations for the Off Shore Wind Energy Project south of Rudee Inlet in approximate position 36 49'1"N, 75 57' 24"W. The Barges will be placed on Jan 20, 2020 (weather permitting) to assist in the current Cable Corridor/Off-shore Wind Energy Project. The proposed project will start 20 Jan and last until approximately Apr 2020.

Chart 12207

LNM: 03/20

******VA – OFFSHORE – VIRGINIA BEACH - FIBER OPTIC CABLE INSTALLATION******

The OSV CECILIA will be installing DUNANT, a fiber optic cable on the seabed floor from an on shore landing point at approximately 36 49 2.431N, 75 58 4.9872W, near the Croatan Parking Lot, eastward approximately 32 km to 36 49 38.91N, 75 36 31.47W. Work will be conducted 24 hours a day, 7 days a week from 12 Apr to 30 Apr 2020. The OSV CECILIA will then commence route clearance from 01 May to 05 May 2020 starting at N36 49.1040, W075 57.3936 out to N36 52.7050, W074 39.2468. Work will be conducted 24 hours a day. The CECILIA may be contacted on VHF-FM 16 and 13. For more information or questions, contact Kathryn Waters at 603-380-5048.

Chart 12200

LNM: 15/20

******VA – OFFSHORE – CAMP PENDLETON – VIRGINIA BEACH – WORK ZONE******

The self-propelled Lift boat RAM XV starts diver operations survey and subsea diving works at the cable beaching area at #1WP Ram XV will be in position and jack up at April 30, 2020 - and will continue subsea work scopes until May 23, 2020 - weather permitting. RAM XV will regular have divers in the water and excavating the HDD duct for the subsea cable pull in operation.

RAM XV will operate in approximate position: (WGS 84 Decimal degrees) 36.817122N - 075.955312W.

Chart 12200

LNM: 17/20

VA – OFFSHORE – CAMP PENDLETON – VIRGINIA BEACH – WORK ZONE - BUOYS

Costal Virginia Offshore Windfarm (CVOW) will deploy 6 Special Demarcation Buoys to identify a near shore work zone where a subsea cable will be installed. The near shore work zone is approximately ½ to 1 NM offshore of Camp Pendleton in Virginia Beach. The buoys are yellow with a flashing 4 second yellow light. The deployment of the 6 buoys is expected to occur between April 2 and April 8, 2020, weather permitting. The buoys will be moored in the positions listed below until construction activities are complete.

- 1: 36.81758618N, 75.9588702W
- 2: 36.81827894N, 75.95159114W
- 3: 36.81848040N, 75.94542453W
- 4: 36.81577617N, 75.94539127W
- 5: 36.81566732N, 75.95155881W
- 6: 36.81561423N, 75.95884564W

For questions or additional information contact Capt. Peder Rosenberg Pedersen, Orsted CVOW project, PEDPE@Orsted.dk, 1-757-334-4578.

Chart 12200

LNM: 10/20

******VA – NC – CAPE HENRY TO COROLLA TO OREGON INLET – OFFSHORE SURVEYING******

The GERRY BORDELON will be conducting surveying, seabed mapping and other work offshore. The main survey area is: 43nmi SE of the Cape Henry lighthouse. 37nmi NNE of Oregon Inlet, NC. 26nmi E of Corolla, NC. Survey Corridor to Shore: a series of lines from the main survey area at 43nmi SE of the Cape Henry Lighthouse to shore approximately 11nmi S of the Cape Henry Lighthouse. Main survey area stretches from 36d 08' N to 36d 28'N and 75d 20' W to 75d 00' W. At times the vessel will also be engaged in benthic sampling of the seabed and will be stationary while grab samples are collected. Towed Survey Equipment may extend up to 1000 feet behind the vessel. The GERRY BORDELON will be restricted in her ability to maneuver and requests a 1 NM CPA. Survey work will be conducted 24 hours a day, seven days a week until 29 Feb. See Enclosure 5 for more information. For questions, contact James Hougham at 713-690-4900.

Chart 12207

LNM: 06/20

******NC – SEACOAST - OFFSHORE APPROACHES TO THE CAPE FEAR RIVER AND BEAUFORT INLET - PORT ACCESS ROUTE STUDY******

The Coast Guard is conducting a Port Access Route Study (PARS) to determine whether existing or additional vessel routing measures are necessary along the seacoast of North Carolina and in the approaches to the Cape Fear River and Beaufort Inlet (hereinafter, "NCPARS"). The study is focused on routes between port approaches and international entry and departure transit areas affecting North Carolina ports. The NCPARS will consider whether existing or additional routing measures are necessary to improve navigation safety due to factors such as planned or potential offshore development, current port capabilities and planned improvements, increased vessel traffic, existing and potential anchorage areas, changing vessel traffic patterns, weather conditions, or navigational difficulty. The aim of vessel routing measures are to reduce the risk of casualties. Examples of potential measures include traffic separation schemes, two-way routes, recommended tracks, deep-water routes, precautionary areas, and areas to be avoided. The recommendations of the study may lead to future rulemakings or appropriate international agreements.

DATES: Comments and related material must be received on or before May 18, 2020. Requests for a public meeting must be submitted on or before April 17, 2020.

<https://www.federalregister.gov/documents/2020/03/18/2020-05653/port-access-route-study-seacoast-of-north-carolina-including-offshore-approaches-to-the-cape-fear>

See Enclosure 7 for a chartlet of the area.

Charts: 11009 11520 12200

LNM: 12/20

******NC – CURRITUCK BEACH LIGHT TO WIMBLE SHOALS – PROPOSED BRIDGE******

All interested parties are notified that the Commander, Fifth Coast Guard District has received a proposal from the North Carolina Turnpike Authority and North Carolina Department of Transportation with plans for construction of a new highway fixed bridge over a navigable waterway of the United States.

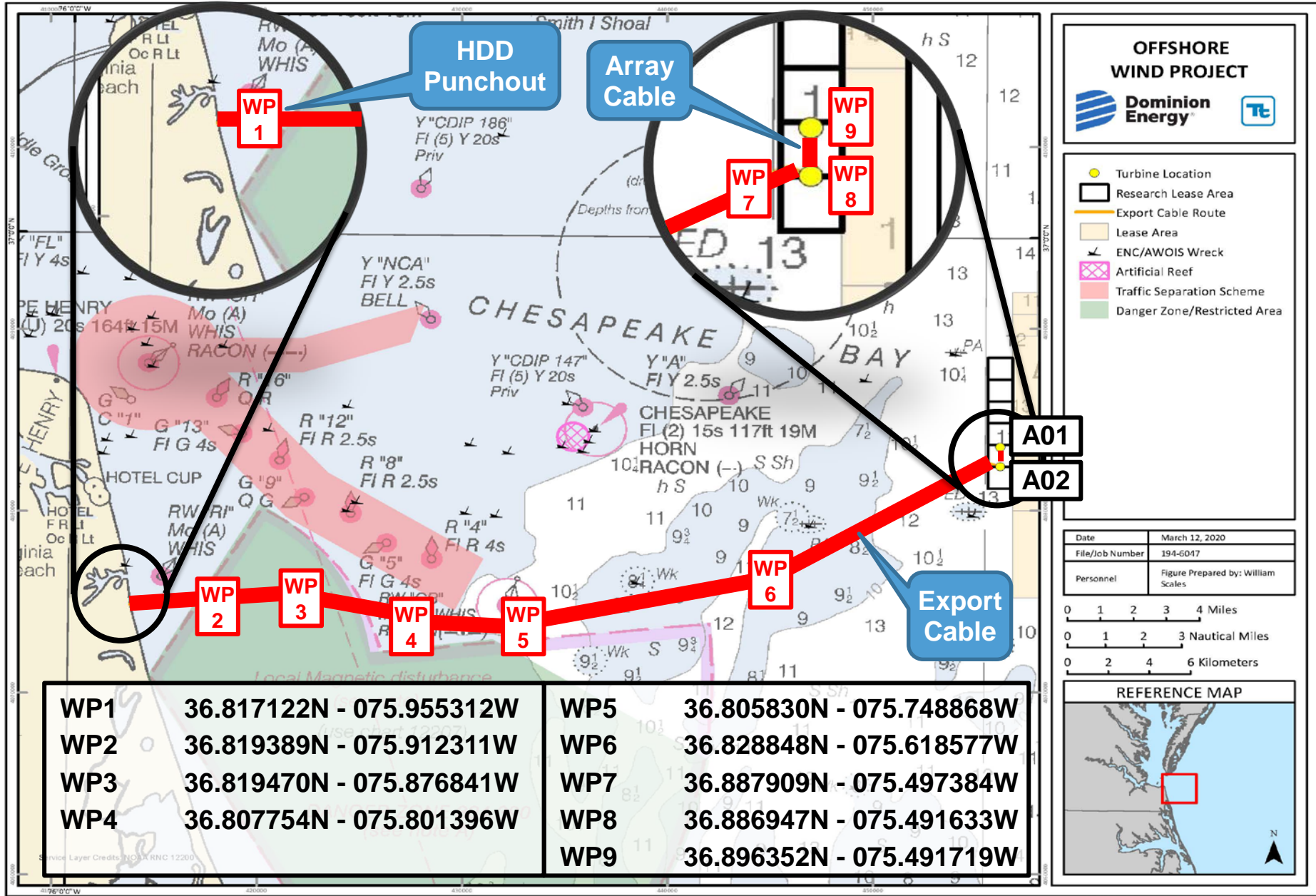
WATERWAY AND LOCATION: Currituck Sound, approximately 18 miles north of Wright Memorial Bridge, between Aydlett on the mainland and Corolla on the Outer Banks, in Currituck County, NC.

CHARACTER OF WORK: The proposed project is to construct a new bridge across Currituck Sound from the mainland to the Outer Banks. The proposed two-lane, fixed span bridge is approximately 4.7 miles long and will have a minimum vertical clearance of 15 feet above mean high water and 40 feet of horizontal clearance between piers. The navigation span will be placed over deepest water. The proposed bridge will extend from a point on the mainland just north of Aydlett to the Outer Banks near the Corolla Bay community just south of Great Beach Pond and Whale Head Bay. The purpose of the project is to substantially improve traffic flow on the project area's thoroughfares (US 158 and NC 12), reduce travel time for persons traveling between the Currituck County mainland and the Currituck County Outer Banks, and reduce hurricane clearance time for

Dominion Energy CVOW Pilot Project

Cable Pre-lay Survey LNTM

April 2, 2020



NOT TO BE USED FOR NAVIGATION