

# SECTION 7 - FOREIGN ATTACHMENTS TABLE OF CONTENTS

BY     JAL    

DATE   05-09-19  

REV.     1    

07.00-A

REV. 1 (05/09/19) - CHANGED DWG TITLES FOR 07.02-06 & 07.03-01

**07.01 GENERAL INFORMATION**

FOREIGN ATTACHMENTS AND JOINT USE..... 07.01-01  
FOREIGN ATTACHMENT NOTES..... 07.01-02

**07.02 FOREIGN ATTACHMENT CLEARANCES**

COMMUNICATION CLEARANCES..... 07.02-01  
SECONDARY AND LIGHTING CLEARANCES..... 07.02-02  
COMMUNICATION CROSSING CLEARANCES..... 07.02-03  
COMMUNICATION MID-SPAN CLEARANCES..... 07.02-04  
COMMUNICATION RISER CLEARANCES..... 07.02-05  
DECORATIVE ATTACHMENT INSTALLATION ON COMPANY POLE..... 07.02-06

**07.03 COMMUNICATION POWER SUPPLY CLEARANCES**

COMMUNICATION POWER SUPPLY ON COMPANY POLE (FMO)..... 07.03-01  
COMMUNICATION POWER SUPPLY ON CUSTOMER OWNED POLE..... 07.03-02

**07.04 ANTENNA SYSTEMS**

INSTALLED IN SUPPLY SPACE ON STAND ALONE POLE..... 07.04-01  
INSTALLED IN SUPPLY SPACE ON STREET LIGHT ONLY POLE..... 07.04-02  
INSTALLED IN SUPPLY SPACE ON SECONDARY POLE..... 07.04-03  
INSTALLED IN COMMUNICATION SPACE..... 07.04-04

**07.05 JOINT USE WITH OTHER UTILITIES**

JOINT USE POLE - SINGLE ARM TANGENT..... 07.05-01  
JOINT USE POLE - FG DEADEND BUCK..... 07.05-02  
JOINT USE POLE WITH LIGHTNING ARRESTERS..... 07.05-03

EFFECTIVE  
DATE:  
04-29-19

**DISTRIBUTION CONSTRUCTION STANDARD  
DOMINION ENERGY SOUTH CAROLINA, INC.**

# FOREIGN ATTACHMENTS AND JOINT USE

BY     JAL    

DATE   05-09-19  

REV.     1    

07.01-01

REV. 1 (05/09/19) - CHANGED SCE&G TO COMPANY

## **GENERAL**

THE DRAWINGS IN THIS SECTION SUPPORT OUR AGREEMENTS WITH FOREIGN ATTACHERS. NO COMPANY ATTACHMENTS SHALL BE PLACED ON POLES OF ANOTHER COMPANY NOR SHALL FOREIGN ATTACHMENTS BE PLACED ON COMPANY POLES UNLESS COVERED BY A FORMAL CONTRACT.

## **INTERFERENCE**

WHEN WORKING ON COMPANY LINES IN CLOSE PROXIMITY TO FOREIGN LINES, EXTREME CAUTION SHALL BE TAKEN TO ENSURE FOREIGN LINES ARE NOT DISTURBED.

## **GUYING**

ALL FOREIGN ATTACHMENTS, INCLUDING COMPANY COMMUNICATION CABLES, SHALL HAVE THEIR OWN DOWN GUY AND ANCHOR. THE USE OF AN EXISTING COMPANY DISTRIBUTION OR TRANSMISSION ANCHOR FOR ANY COMMUNICATION CABLE IS PROHIBITED.

## **BONDING**

ALL OVERHEAD FOREIGN ATTACHMENTS, INCLUDING COMPANY COMMUNICATION CABLES, SHALL BE BONDED TO THE COMPANY POLE GROUND.

## **JOINT USE WITH OTHER UTILITIES**

WHEN CONSTRUCTING JOINT USE POLES/LINES WITH ANOTHER ELECTRIC UTILITY, CLEARANCES AND CIRCUIT SEPARATION MUST MEET THE MINIMUM REQUIREMENTS SHOWN ON DRAWINGS 07.05-01, 07.05-02 AND 07.05-03. ALL COMPANY CONSTRUCTION WILL CONFORM TO CURRENT HORIZONTAL (CROSSARM) OR VERTICAL DESIGN SPECIFICATIONS.

WHEN EITHER ELECTRIC UTILITY IS PERFORMING ROUTINE WORK ON JOINT USE POLES/LINES, NOTIFICATION OF THE TYPE OF WORK IS TO BE MADE TO THE OTHER UTILITY/UTILITIES BEFORE THE WORK COMMENCES.

DURING CONDITIONS OF EMERGENCY RESTORATION, COMPANIES MUST WORK THEIR OWN CLEARANCE AND FOLLOW THEIR SAFE WORK PRACTICES. NOTIFICATION TO THE OTHER ELECTRIC UTILITY/UTILITIES MUST BE MADE AS SOON AS POSSIBLE DESCRIBING THE EMERGENCY CONDITION(S).

ALL POLE GROUNDS ON JOINT USE POLES SHALL BE BONDED TOGETHER.

EFFECTIVE  
DATE:  
04-29-19

**DISTRIBUTION CONSTRUCTION STANDARD  
DOMINION ENERGY SOUTH CAROLINA, INC.**

# FOREIGN ATTACHMENT NOTES

BY JAL

DATE 05-09-19

REV. 1

07.01-02

## NOTES:

1. AS OF 09/16/2015, NO ADDITIONAL COMMUNICATION POWER SUPPLIES, CUSTOMER-OWNED METER BASES, OR OTHER SIMILAR EQUIPMENT SHALL BE INSTALLED ON COMPANY POLES.
2. COMMUNICATION AND/OR ANTENNA SYSTEM EQUIPMENT MUST BE EFFECTIVELY GROUNDED. A GROUND ELECTRODE IS REQUIRED WHERE SUCH EQUIPMENT IS ATTACHED TO COMPANY POLE(S). THE COMPANY REQUIRES THE GROUND ELECTRODE TO BE A 5/8" X 10' COPPER CLAD GROUND ROD. REFERENCE NEC 250.50.
3. THE GROUNDING ELECTRODE CONDUCTOR (CONNECTING EQUIPMENT TO GROUND ROD) MUST NOT BE LESS THAN #8 COPPER. REFERENCE NEC 250.66.
4. CONNECTORS USED TO BOND COMMUNICATION EQUIPMENT TO GROUND ROD MUST BE BRONZE OR COPPER ALLOY. ALUMINUM OR GALVANIZED CONNECTORS ARE NOT ACCEPTABLE.
5. COMMUNICATION AND/OR ANTENNA SYSTEM EQUIPMENT OWNER SHALL PROVIDE BONDING BETWEEN ALL ABOVE GROUND METALLIC SUPPLY AND COMMUNICATION ENCLOSURES THAT ARE SEPARATED BY A DISTANCE OF 6 FEET OR LESS. REFERENCE NESC 384.C.
6. COMMUNICATION AND/OR ANTENNA SYSTEM WIRING MUST BE IN RIGID METAL OR PVC CONDUIT. CONDUIT MUST BE SECURELY FASTENED TO POLE.
7. TO FACILITATE POLE REPLACEMENT AND PROVIDE SAFER CLIMBING CONDITIONS, COMMUNICATION CABLE(S) SHALL BE INSTALLED ON THE SAME SIDE OF POLE AS THE COMPANY SYSTEM NEUTRAL.
8. BOLTS USED TO SUPPORT COMMUNICATION AND/OR ANTENNA SYSTEM EQUIPMENT SHALL NOT PROTRUDE (EXTEND) MORE THAN 2.5 INCHES FROM POLE.
9. ANTENNAS IN THE SUPPLY SPACE MUST BE INSTALLED BY AN APPROVED CONTRACTOR QUALIFIED TO WORK IN THE SUPPLY SPACE.
10. ANTENNA DESIGN AND POLE LOCATIONS MUST BE APPROVED BY COMPANY. ANTENNAS ARE **NOT** TO BE INSTALLED ON EQUIPMENT POLES, I.E., POLES WITH CAPACITOR BANKS, RECLOSERS, SWITCHES, UG DIPS/RISERS, ETC.
11. ONLY ONE ANTENNA PER POLE IS ALLOWED.
12. NO POLE TOP ANTENNAS WILL BE ALLOWED ON SECONDARY OR STREET LIGHT POLES THAT ARE IN-LINE WITH OVERHEAD PRIMARY LINES.
13. ANTENNA OWNER MUST INSTALL RF WARNING SIGN(S) ON THE POLE AT THE LEVEL WHERE THE SAFE APPROACH DISTANCE ENDS FOR FCC GENERAL POPULATION AND/OR UNCONTROLLED ENVIRONMENTS. WARNING SIGN: "WARNING - ANTENNA RADIATION. MINIMUM APPROACH DISTANCE IS X FT."
14. CAUTION: DISCONNECT POWER TO ANTENNA SYSTEM BEFORE WORKING ON POLE IN AREA ABOVE OR BELOW RF WARNING SIGN. CALL COMPANY'S FOREIGN ATTACHMENT GROUP TO COORDINATE DISCONNECTION WITH TELECOM COMPANY, EXCEPT IN CASE OF EMERGENCY.
15. ALL ANTENNAS AND ANCILLARY EQUIPMENT SHALL BE LABELED WITH THE OWNER'S NAME AND CONTACT INFORMATION, INCLUDING EMERGENCY CONTACT NUMBER.
16. MINIMUM VERTICAL CLEARANCE ABOVE GROUND FOR POLE-MOUNTED EQUIPMENT MUST MEET THE REQUIREMENTS OF NESC TABLE 232-2.
17. SEE SECTION 1 FOR CLEARANCES NOT SPECIFIED IN THIS SECTION.

REV. 1 (05/09/19) - CHANGED SCE&G TO COMPANY

EFFECTIVE  
DATE:  
04-29-19

**DISTRIBUTION CONSTRUCTION STANDARD  
DOMINION ENERGY SOUTH CAROLINA, INC.**

# COMMUNICATION CLEARANCES

BY JAL

DATE 10-25-16

REV. 0

07.02-01

FORMERLY DWG # J-1

## MINIMUM VERTICAL CLEARANCE AT POLE (SUPPORTS) BETWEEN WIRE OR EQUIPMENT AND COMMUNICATION WIRE

WIRE OR EQUIPMENT	CLEARANCE DISTANCE	REFERENCE DRAWING(S)
PRIMARY CONDUCTOR	60"	07.02-04; 07.02-05
SECONDARY OR NEUTRAL	40"	07.02-02; 07.02-04; 07.02-05
SECONDARY DRIP LOOP	40"	07.02-02
BOTTOM OF GROUNDED EQUIPMENT TANK	30"	07.02-02
COMMUNICATION	12"	07.02-02
STREET LIGHT DRIP LOOP	12"	07.02-02
GUY WIRE	6"	07.02-03

## MINIMUM VERTICAL CLEARANCE BETWEEN WIRE OR EQUIPMENT ON DIFFERENT STRUCTURES (LINE CROSSINGS)

WIRE OR EQUIPMENT	CLEARANCE DISTANCE	REFERENCE DRAWING(S)
PRIMARY CONDUCTOR	60"	07.02-03
SECONDARY OR NEUTRAL	48"	07.02-03
COMMUNICATION	24"	07.02-03
GUY WIRE	6"	07.02-03

**NOTE:**

- SEE DRAWINGS 07.01-01 AND 07.01-02 FOR GENERAL INFORMATION AND NOTES.

**EFFECTIVE DATE:**  
01-15-17

**DISTRIBUTION CONSTRUCTION STANDARD  
DOMINION ENERGY SOUTH CAROLINA, INC.**

# SECONDARY AND LIGHTING CLEARANCES

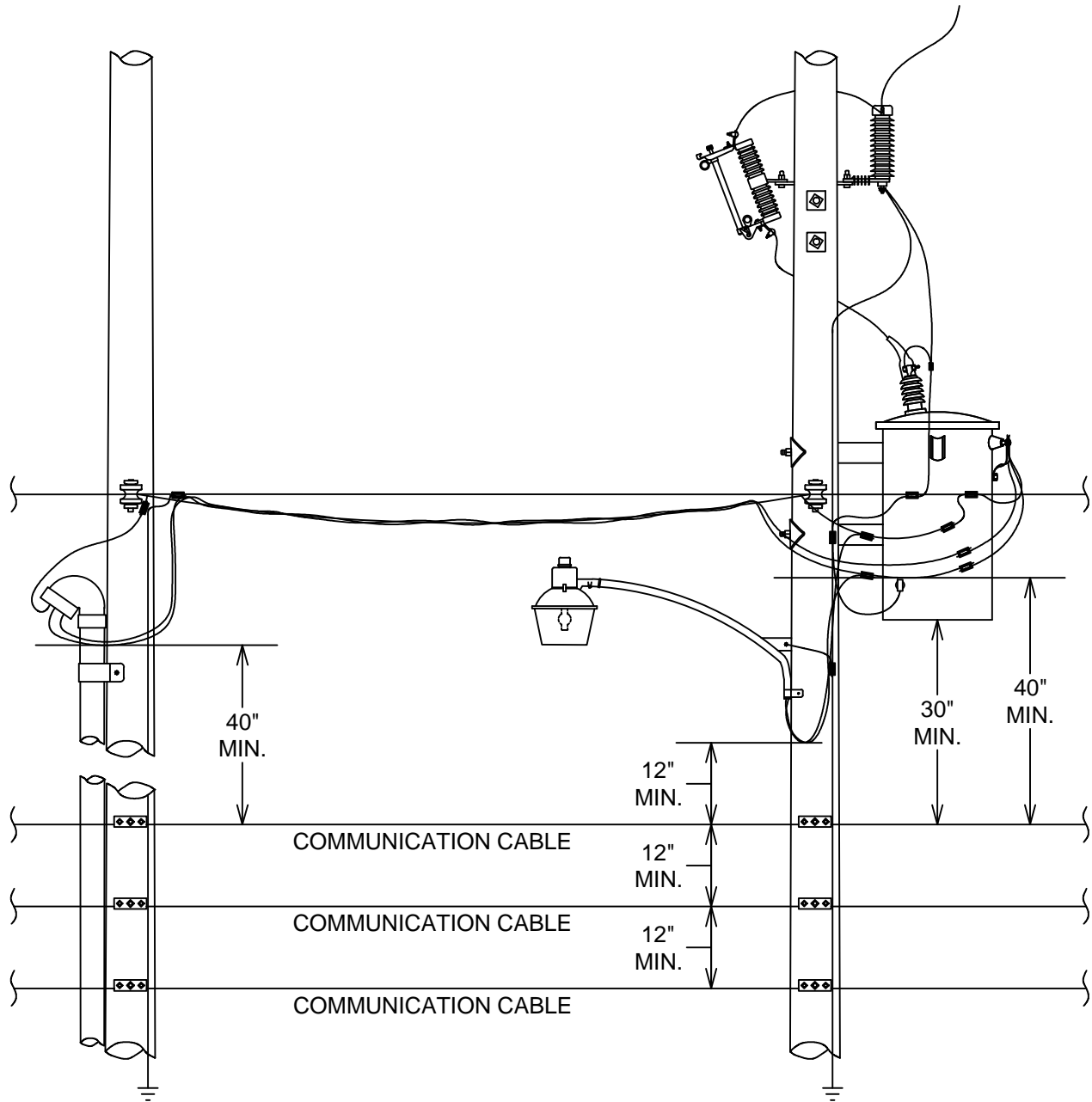
BY JAL

DATE 09-30-16

REV. 0

07.02-02

FORMERLY DWG # J-2, S1 & J-3



**NOTE:**

- 1. SEE DRAWINGS 07.01-01 AND 07.01-02 FOR GENERAL INFORMATION AND NOTES.

**EFFECTIVE DATE:**  
01-15-17

**DISTRIBUTION CONSTRUCTION STANDARD**  
**DOMINION ENERGY SOUTH CAROLINA, INC.**

# COMMUNICATION CROSSING CLEARANCES

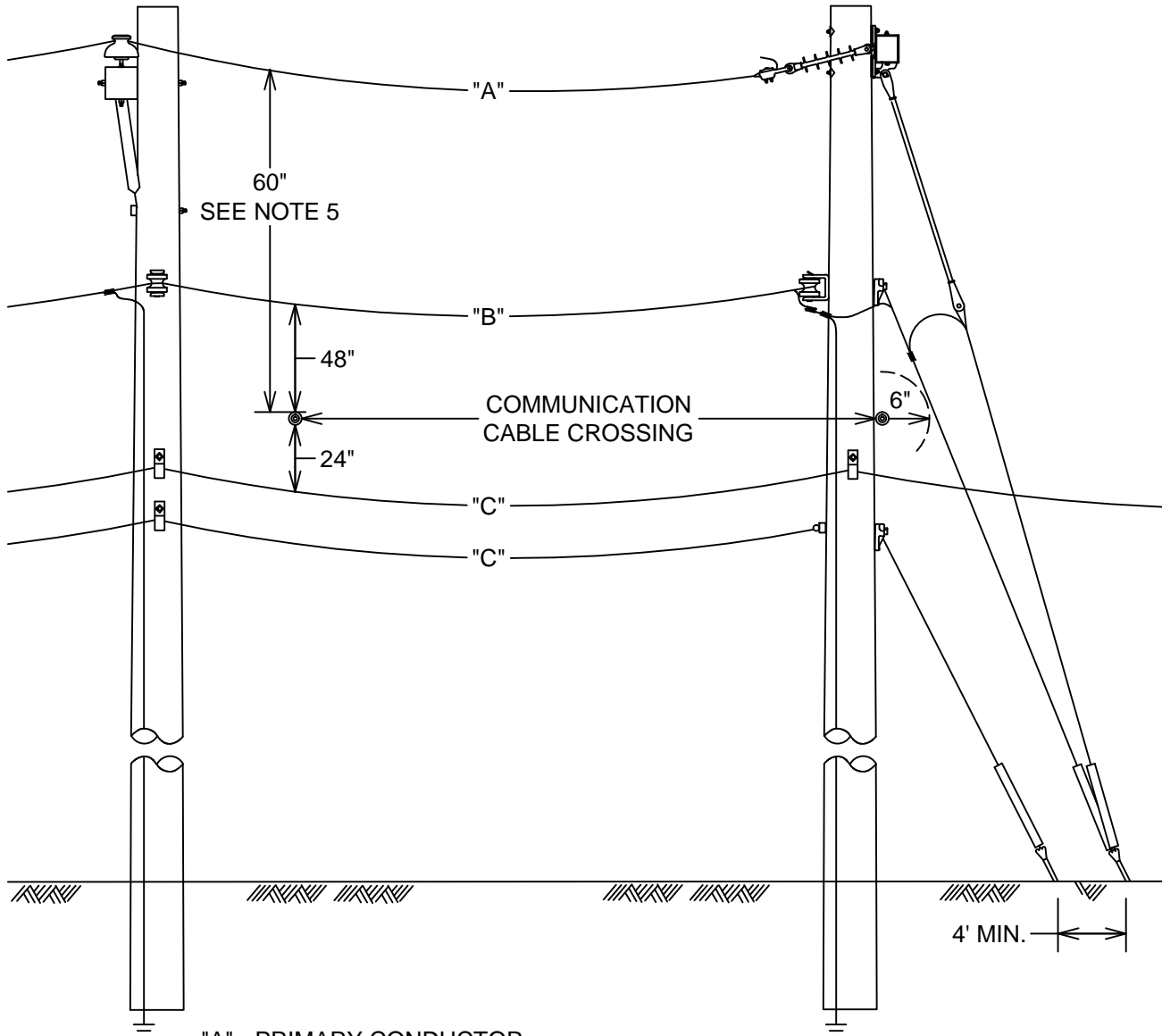
BY JAL

DATE 10-26-16

REV. 0

07.02-03

FORMERLY DWG # J-4



"A" - PRIMARY CONDUCTOR  
 "B" - NEUTRAL OR MULTIPLEX SECONDARY CONDUCTOR  
 "C" - COMMUNICATION CABLES

**NOTES:**

1. SEE DRAWINGS 07.01-01 AND 07.01-02 FOR GENERAL INFORMATION AND NOTES.
2. COMMUNICATION DOWN GUYS AND ANCHORS ARE REQUIRED ON ANGLES AND DEADENDS.
3. JOINT USE OF ANCHORS IS NOT PERMITTED.
4. COMMUNICATION CABLE CROSSING (DIAGONAL OR PERPENDICULAR) IN VICINITY OF DOWN GUY REQUIRES A MINIMUM CLEARANCE OF SIX INCHES.
5. FOR NON-STANDARD CONSTRUCTION, I.E., NEUTRAL NOT IN NORMAL POSITION, A MINIMUM CLEARANCE OF 60 INCHES IS REQUIRED BETWEEN PRIMARY CONDUCTOR(S) AND COMMUNICATION CABLE(S). THIS CLEARANCE DOES NOT SUPERSEDE THE MINIMUM 40 INCH SEPARATION BETWEEN 0-750V CONDUCTOR(S) AND COMMUNICATION CABLE(S).

EFFECTIVE  
 DATE:  
 01-15-17

**DISTRIBUTION CONSTRUCTION STANDARD  
 DOMINION ENERGY SOUTH CAROLINA, INC.**

# COMMUNICATION MID-SPAN CLEARANCES

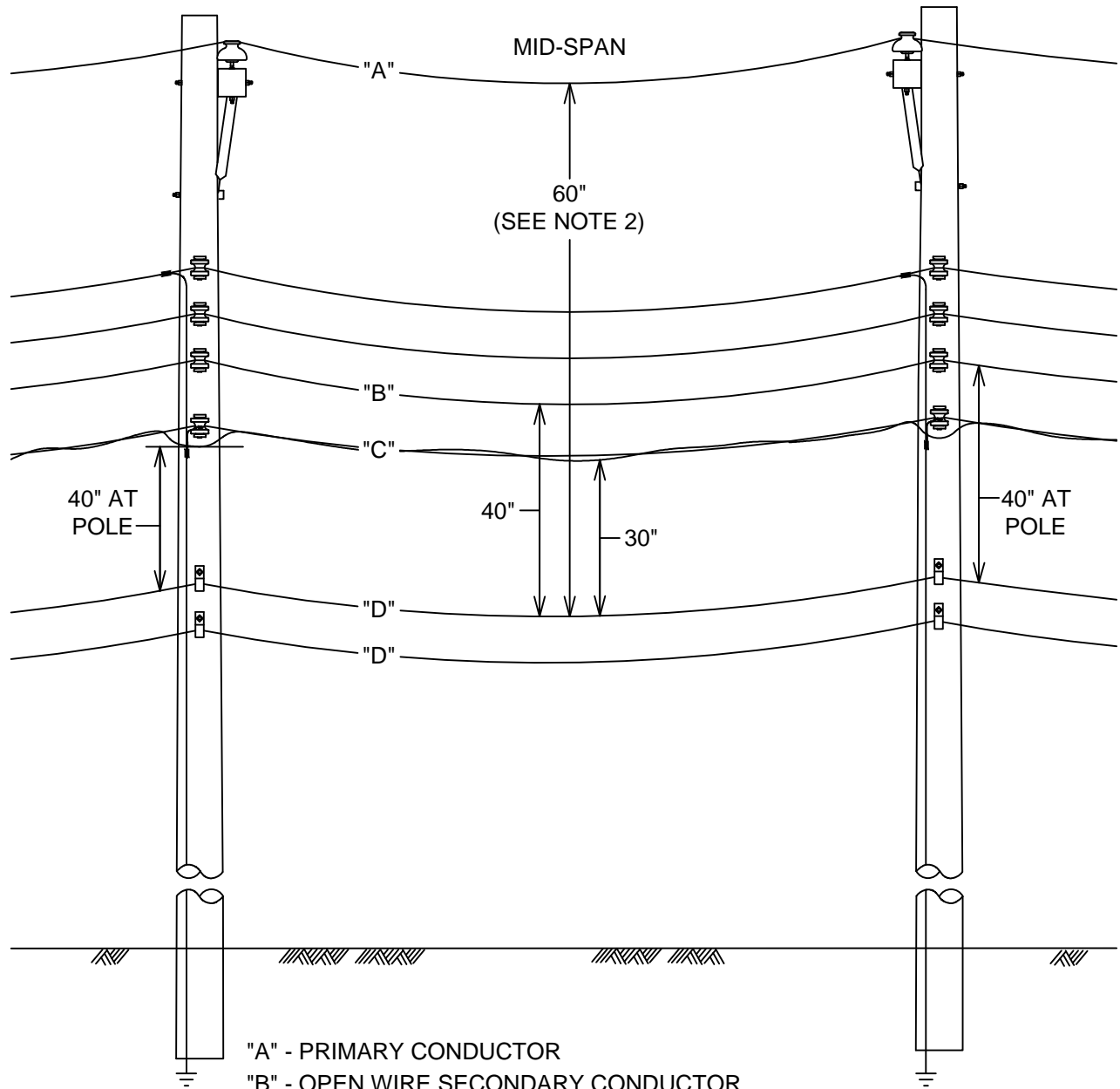
BY JAL

DATE 10-26-16

REV. 0

07.02-04

FORMERLY DWG # J-5



- "A" - PRIMARY CONDUCTOR
- "B" - OPEN WIRE SECONDARY CONDUCTOR
- "C" - NEUTRAL OR MULTIPLEX SECONDARY CONDUCTOR
- "D" - COMMUNICATION CABLES

**NOTES:**

1. SEE DRAWINGS 07.01-01 AND 07.01-02 FOR GENERAL INFORMATION AND NOTES.
2. FOR NON-STANDARD CONSTRUCTION, I.E., NEUTRAL NOT IN NORMAL POSITION, A MINIMUM CLEARANCE OF 60 INCHES IS REQUIRED BETWEEN PRIMARY CONDUCTOR(S) AND COMMUNICATION CABLE(S). THIS CLEARANCE DOES NOT SUPERSEDE THE MINIMUM 40 INCH SEPARATION BETWEEN 0-750V CONDUCTOR(S) AND COMMUNICATION CABLE(S).

EFFECTIVE  
DATE:  
01-15-17

**DISTRIBUTION CONSTRUCTION STANDARD  
DOMINION ENERGY SOUTH CAROLINA, INC.**

# COMMUNICATION RISER CLEARANCES

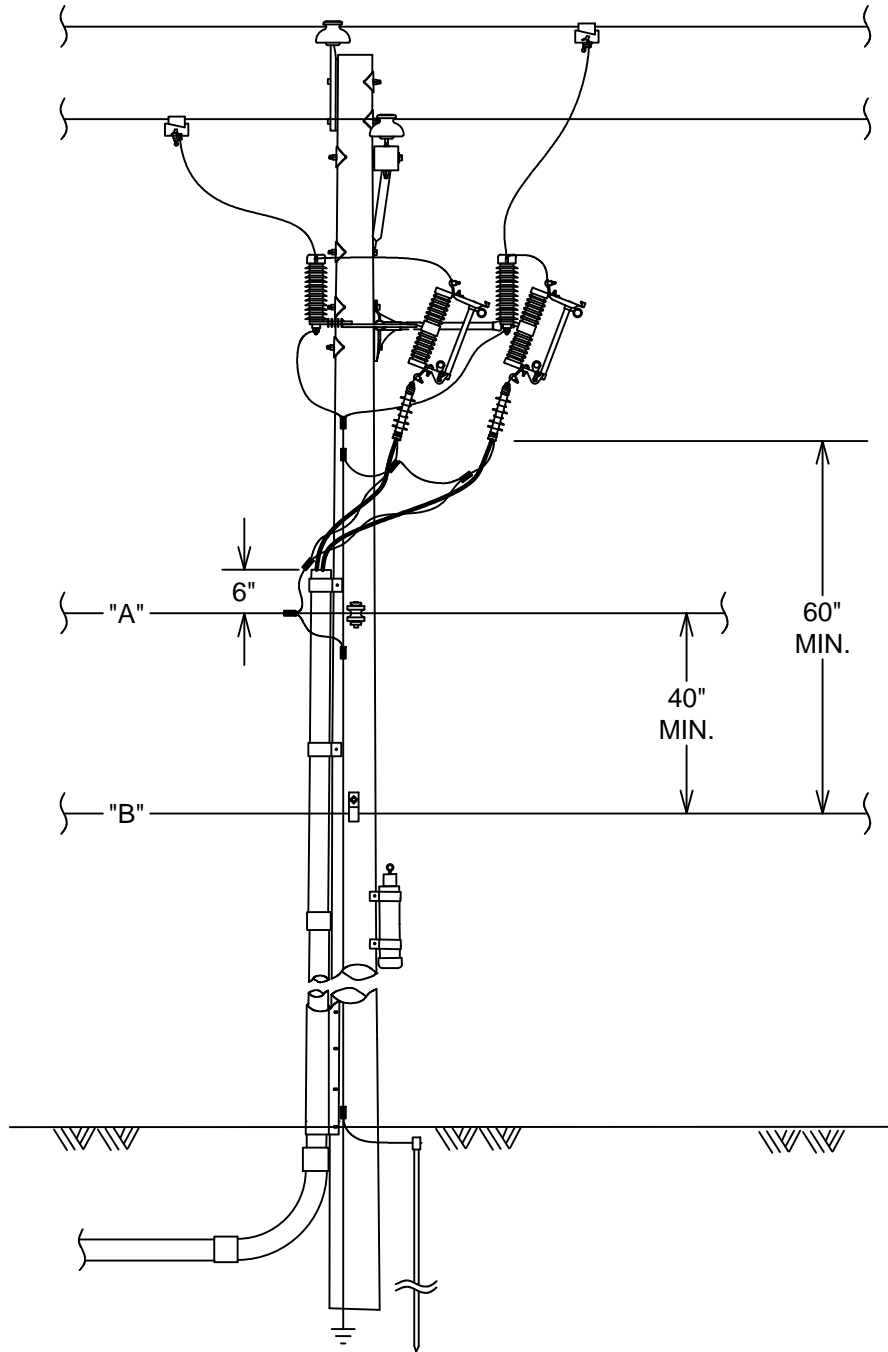
BY JAL

DATE 10-25-16

REV. 0

07.02-05

FORMERLY DWG # J-7



"A" - NEUTRAL OR MULTIPLEX SECONDARY CONDUCTOR  
"B" - COMMUNICATION CABLE

**NOTE:**

- 1. SEE DRAWINGS 07.01-01 AND 07.01-02 FOR GENERAL INFORMATION AND NOTES.

EFFECTIVE  
DATE:  
01-15-17

**DISTRIBUTION CONSTRUCTION STANDARD  
DOMINION ENERGY SOUTH CAROLINA, INC.**



# DECORATIVE ATTACHMENT INSTALLATION ON COMPANY POLE

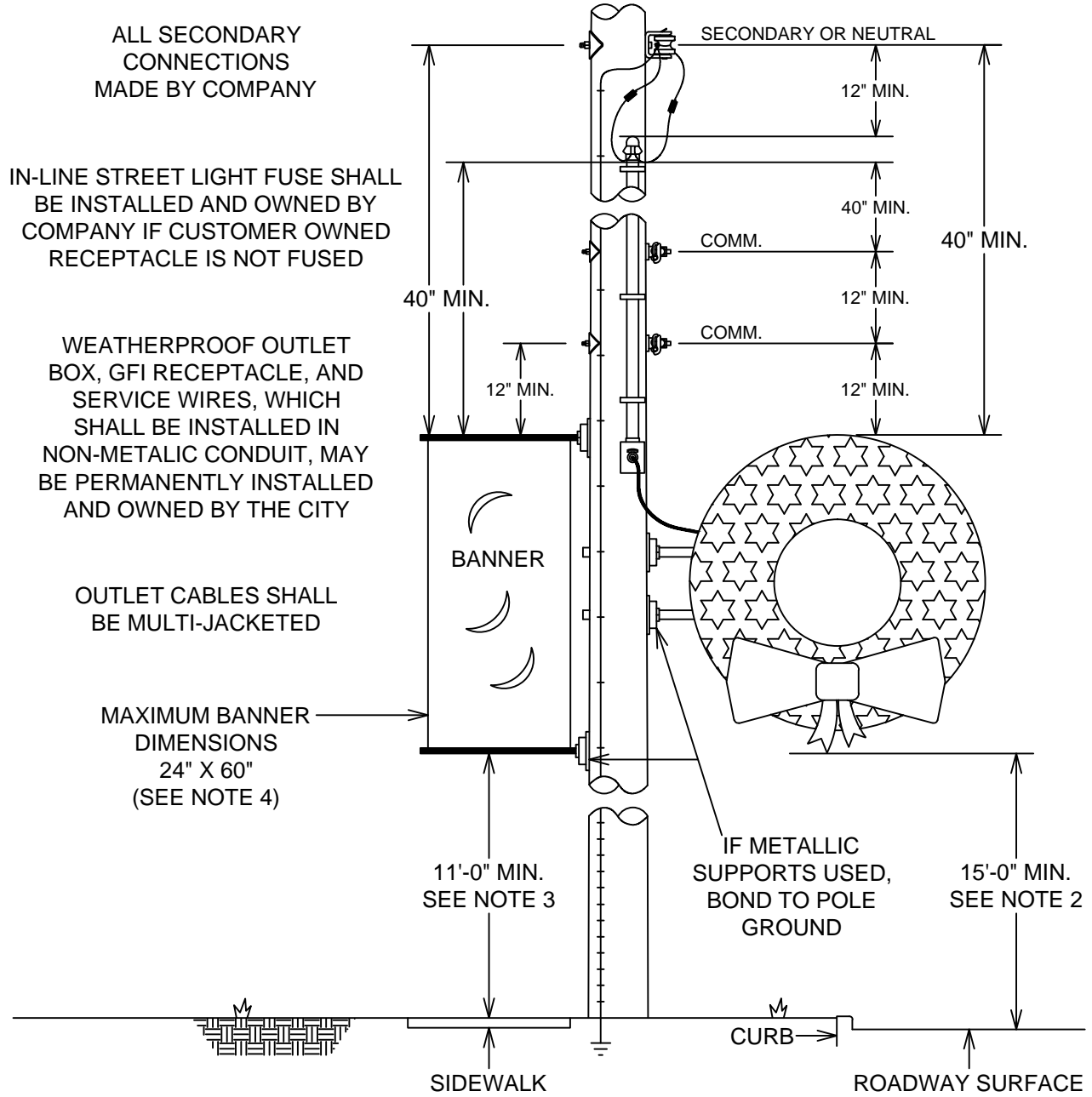
BY JAL

DATE 05-09-19

REV. 1

07.02-06

REV. 1 (05/09/19) - CHANGED DWG TITLE; CHANGED SCE&G TO COMPANY



ALL SECONDARY CONNECTIONS MADE BY COMPANY

IN-LINE STREET LIGHT FUSE SHALL BE INSTALLED AND OWNED BY COMPANY IF CUSTOMER OWNED RECEPTACLE IS NOT FUSED

WEATHERPROOF OUTLET BOX, GFI RECEPTACLE, AND SERVICE WIRES, WHICH SHALL BE INSTALLED IN NON-METALLIC CONDUIT, MAY BE PERMANENTLY INSTALLED AND OWNED BY THE CITY

OUTLET CABLES SHALL BE MULTI-JACKETED

MAXIMUM BANNER DIMENSIONS 24" X 60" (SEE NOTE 4)

11'-0" MIN. SEE NOTE 3

IF METALLIC SUPPORTS USED, BOND TO POLE GROUND

15'-0" MIN. SEE NOTE 2

**NOTES:**

1. AGENCY REQUESTING DECORATIVE ATTACHMENT MUST OBTAIN AN ATTACHMENT PERMIT FROM THE POLE OWNER PRIOR TO INSTALLATION.
2. DECORATIVE ATTACHMENTS THAT EXTEND OVER ROADS, STREETS, PARKING LOTS OR ALLEYS SHALL HAVE A MINIMUM VERTICAL CLEARANCE OF 15'-0".
3. DECORATIVE ATTACHMENTS THAT EXTEND OVER AREAS SUBJECT TO PEDESTRIAN OR RESTRICTED TRAFFIC SHALL HAVE A MINIMUM VERTICAL CLEARANCE OF 11'-0".
4. BANNERS MUST HAVE HALF CIRCLE AIR POCKETS CUT INTO THEM.
5. COMPANY IS NOT RESPONSIBLE FOR REMOVING AND/OR TRANSFERRING DECORATIVE ATTACHMENTS WHENEVER THE POLES ARE REPLACED.

EFFECTIVE DATE:  
04-29-19

**DISTRIBUTION CONSTRUCTION STANDARD  
DOMINION ENERGY SOUTH CAROLINA, INC.**

# COMMUNICATION POWER SUPPLY ON COMPANY POLE (EXISTING UNITS ONLY)

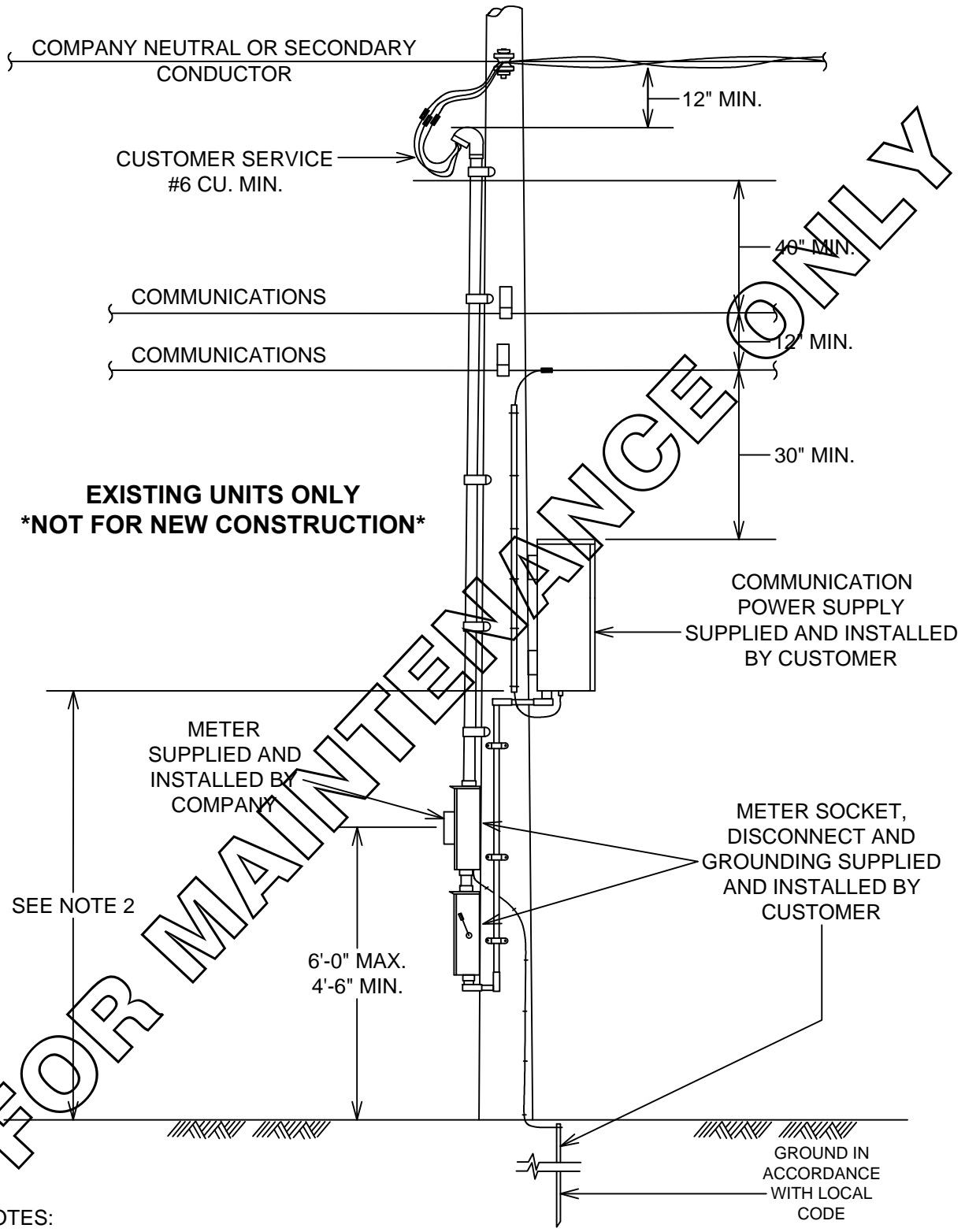
BY JAL

DATE 05-09-19

REV. 1

07.03-01

REV. 1 (05/09/19) - CHANGED DWG TITLE; CHANGED SCE&G TO COMPANY



**EXISTING UNITS ONLY  
\*NOT FOR NEW CONSTRUCTION\***

SEE NOTE 2

FOR MAINTENANCE ONLY

**NOTES:**

1. SEE DRAWINGS 07.01-01 AND 07.01-02 FOR GENERAL INFORMATION AND NOTES.
2. MINIMUM CLEARANCE MUST MEET NESC TABLE 232-2.

**EFFECTIVE DATE:  
04-29-19**

**DISTRIBUTION CONSTRUCTION STANDARD  
DOMINION ENERGY SOUTH CAROLINA, INC.**

# COMMUNICATION POWER SUPPLY ON CUSTOMER OWNED POLE

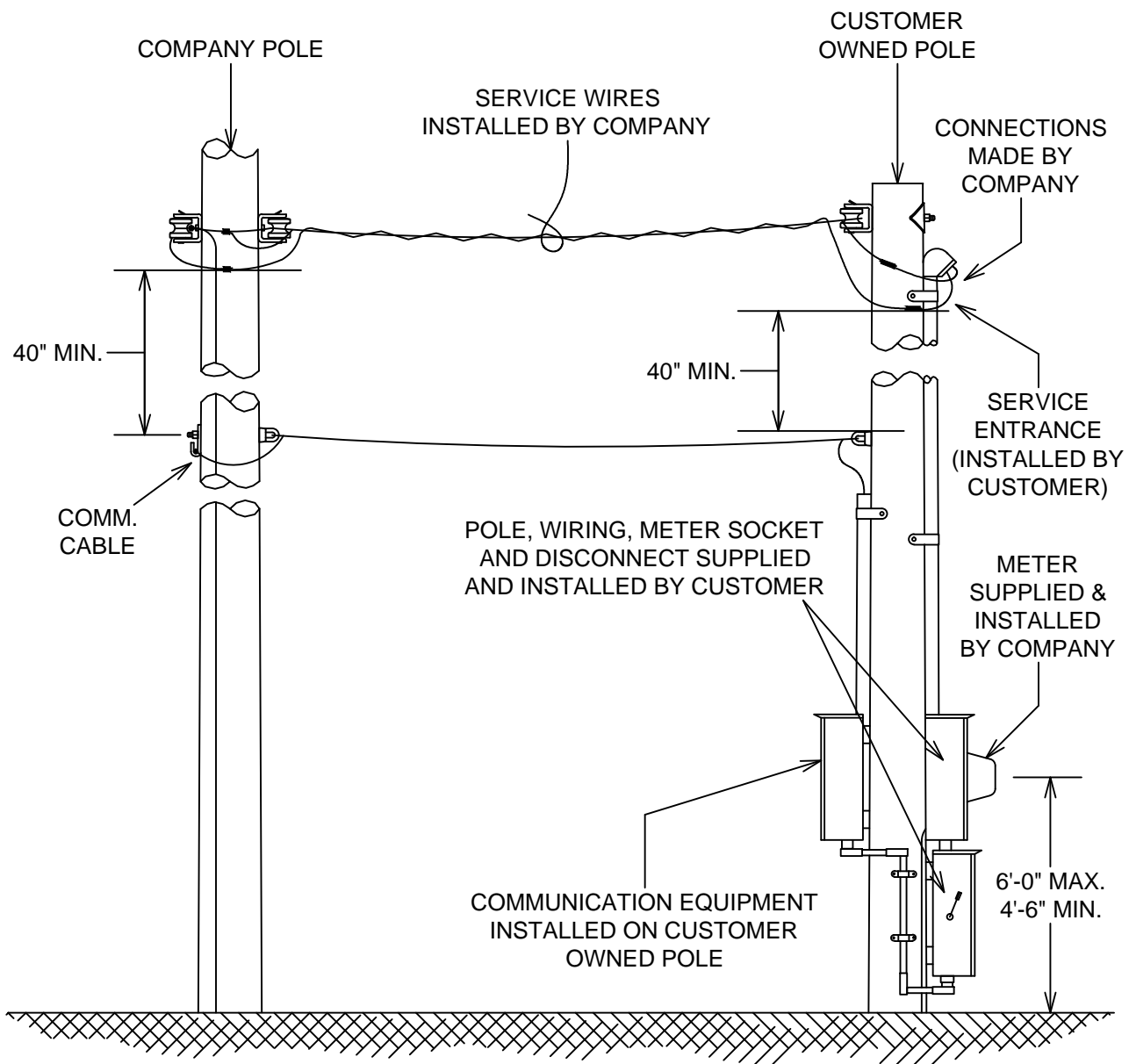
BY JAL

DATE 05-09-19

REV. 1

07.03-02

REV. 1 (05/09/19) - CHANGED SCE&G TO COMPANY



**NOTES:**

1. SEE DRAWINGS 07.01-01 AND 07.01-02 FOR GENERAL INFORMATION AND NOTES.
2. CUSTOMER POLE LOCATION MUST BE APPROVED BY COMPANY. CUSTOMER POLE IS NOT ALLOWED UNDER COMPANY LINES.
3. IF CUSTOMER POLE REQUIRES GUYING, THE DOWN GUY AND ANCHOR SHALL BE SUPPLIED, INSTALLED AND MAINTAINED BY THE CUSTOMER.

**EFFECTIVE DATE:**  
04-29-19

**DISTRIBUTION CONSTRUCTION STANDARD  
DOMINION ENERGY SOUTH CAROLINA, INC.**

# ANTENNA SYSTEMS INSTALLED IN SUPPLY SPACE ON STAND ALONE POLE

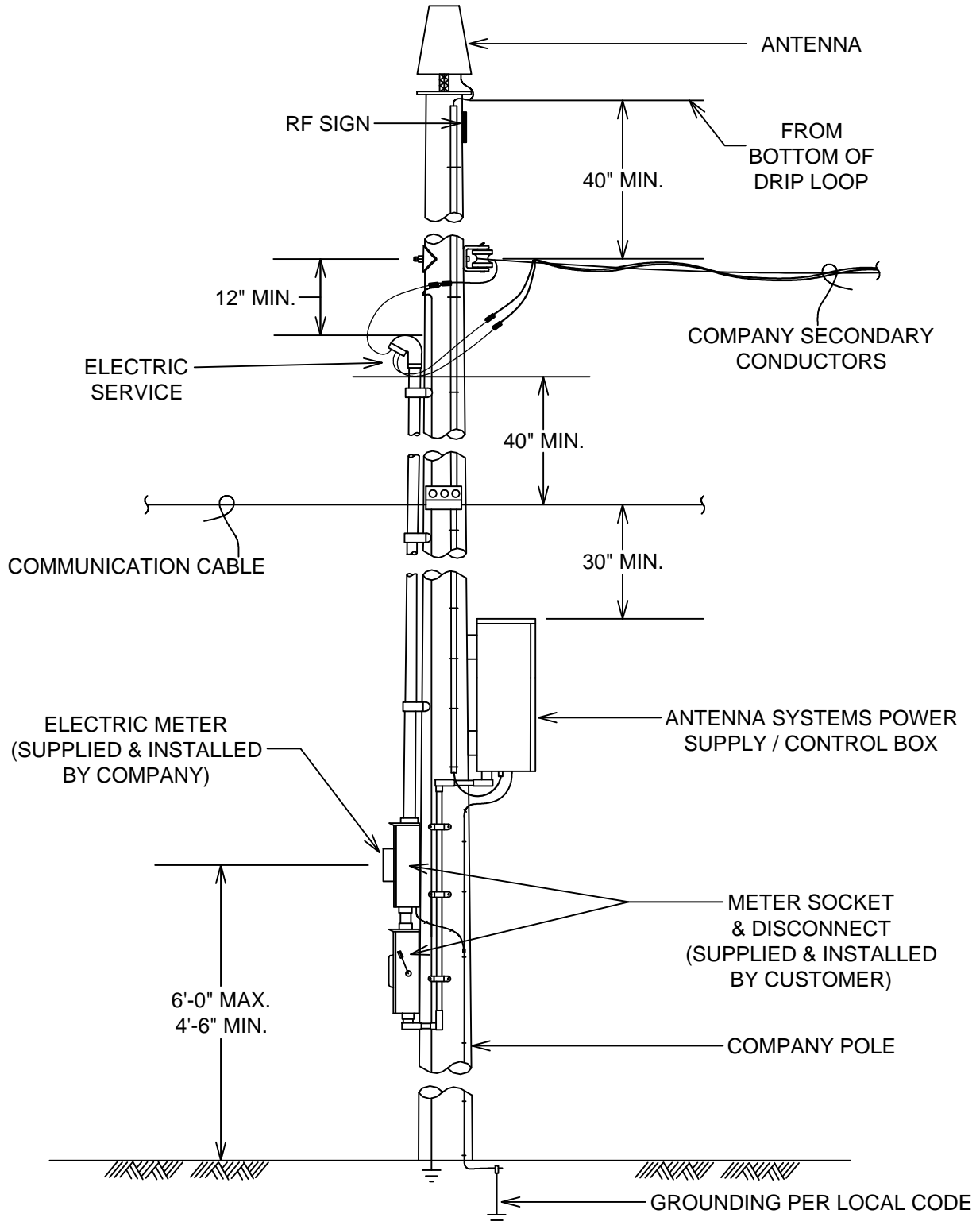
BY JAL

DATE 05-09-19

REV. 1

07.04-01

REV. 1 (05/09/19) - CHANGED SCE&G TO COMPANY



**NOTE:**

1. SEE DRAWINGS 07.01-01 AND 07.01-02 FOR GENERAL INFORMATION AND NOTES.

EFFECTIVE DATE:  
04-29-19

**DISTRIBUTION CONSTRUCTION STANDARD  
DOMINION ENERGY SOUTH CAROLINA, INC.**

# ANTENNA SYSTEMS INSTALLED IN SUPPLY SPACE ON STREET LIGHT ONLY POLE

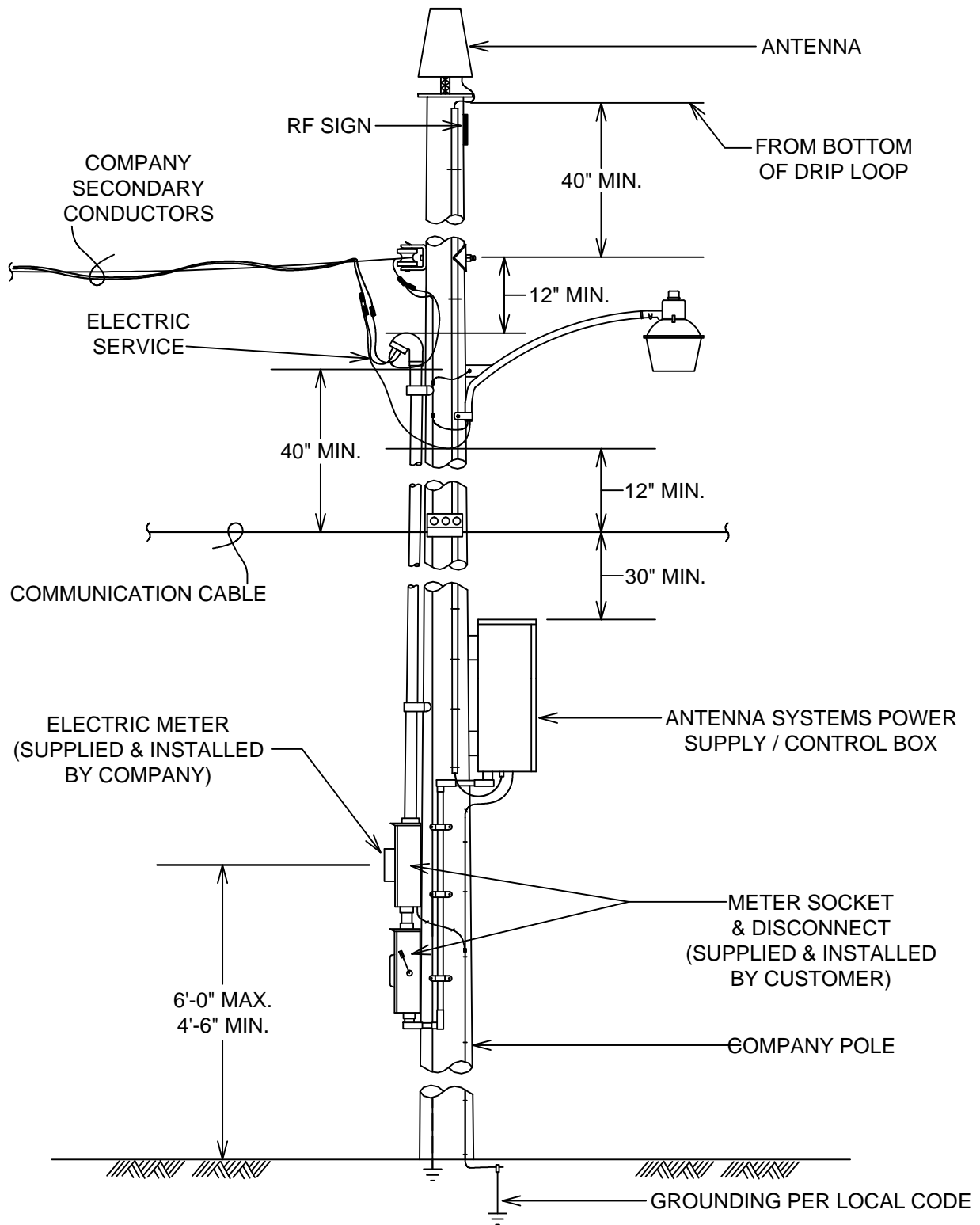
BY JAL

DATE 05-09-19

REV. 1

07.04-02

REV. 1 (05/09/19) - CHANGED SCE&G TO COMPANY



**NOTE:**

1. SEE DRAWINGS 07.01-01 AND 07.01-02 FOR GENERAL INFORMATION AND NOTES.

**EFFECTIVE DATE:**  
04-29-19

**DISTRIBUTION CONSTRUCTION STANDARD  
DOMINION ENERGY SOUTH CAROLINA, INC.**

# ANTENNA SYSTEMS INSTALLED IN SUPPLY SPACE ON SECONDARY POLE

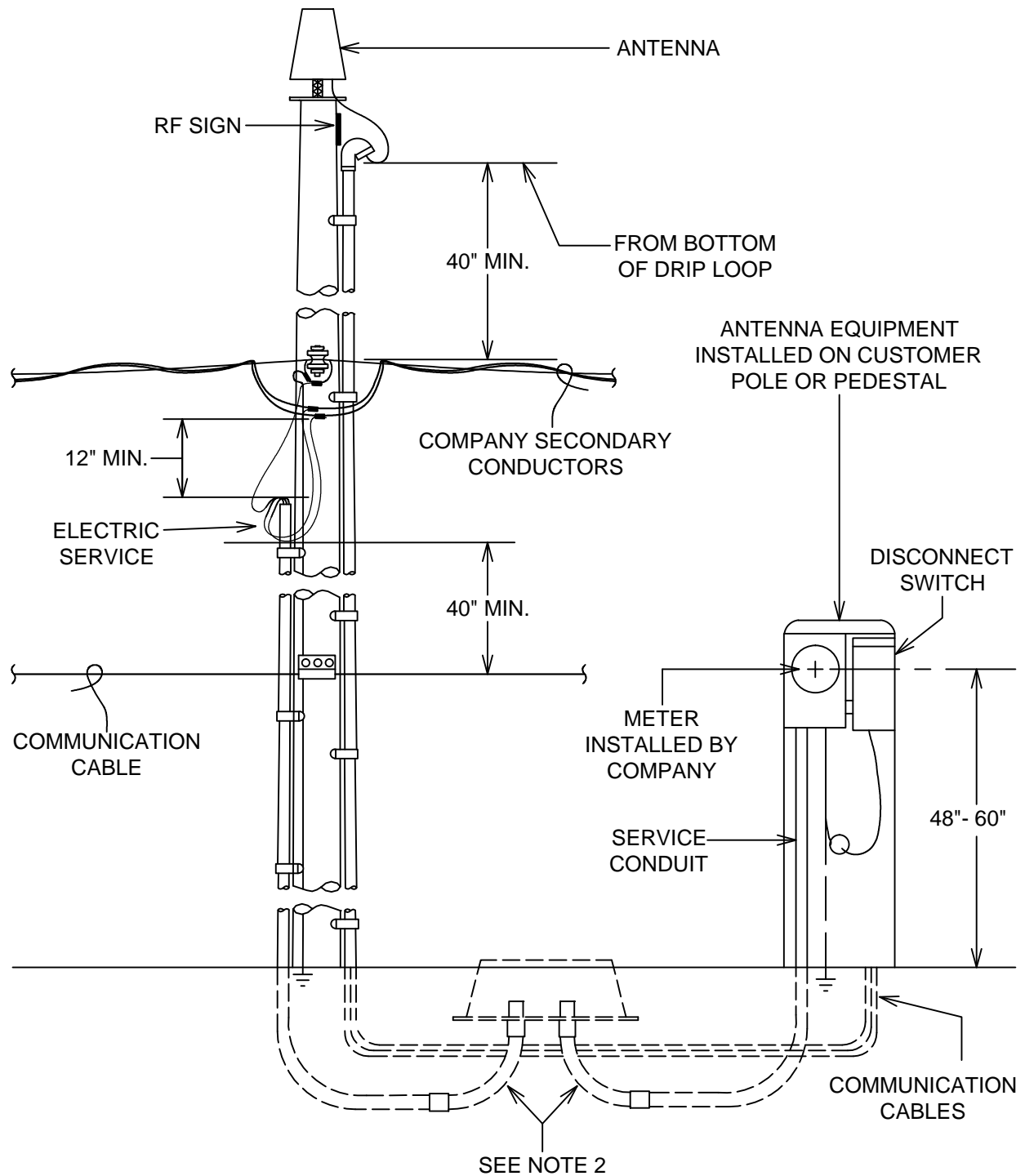
BY JAL

DATE 05-09-19

REV. 1

07.04-03

REV. 1 (05/09/19) - CHANGED SCE&G TO COMPANY



**NOTES:**

1. SEE DRAWINGS 07.01-01 AND 07.01-02 FOR GENERAL INFORMATION AND NOTES.
2. SEE DRAWING 06.04-04 FOR SERVICE REQUIREMENTS.

**EFFECTIVE DATE:**  
04-29-19

**DISTRIBUTION CONSTRUCTION STANDARD**  
**DOMINION ENERGY SOUTH CAROLINA, INC.**

# ANTENNA SYSTEMS INSTALLED IN COMMUNICATION SPACE

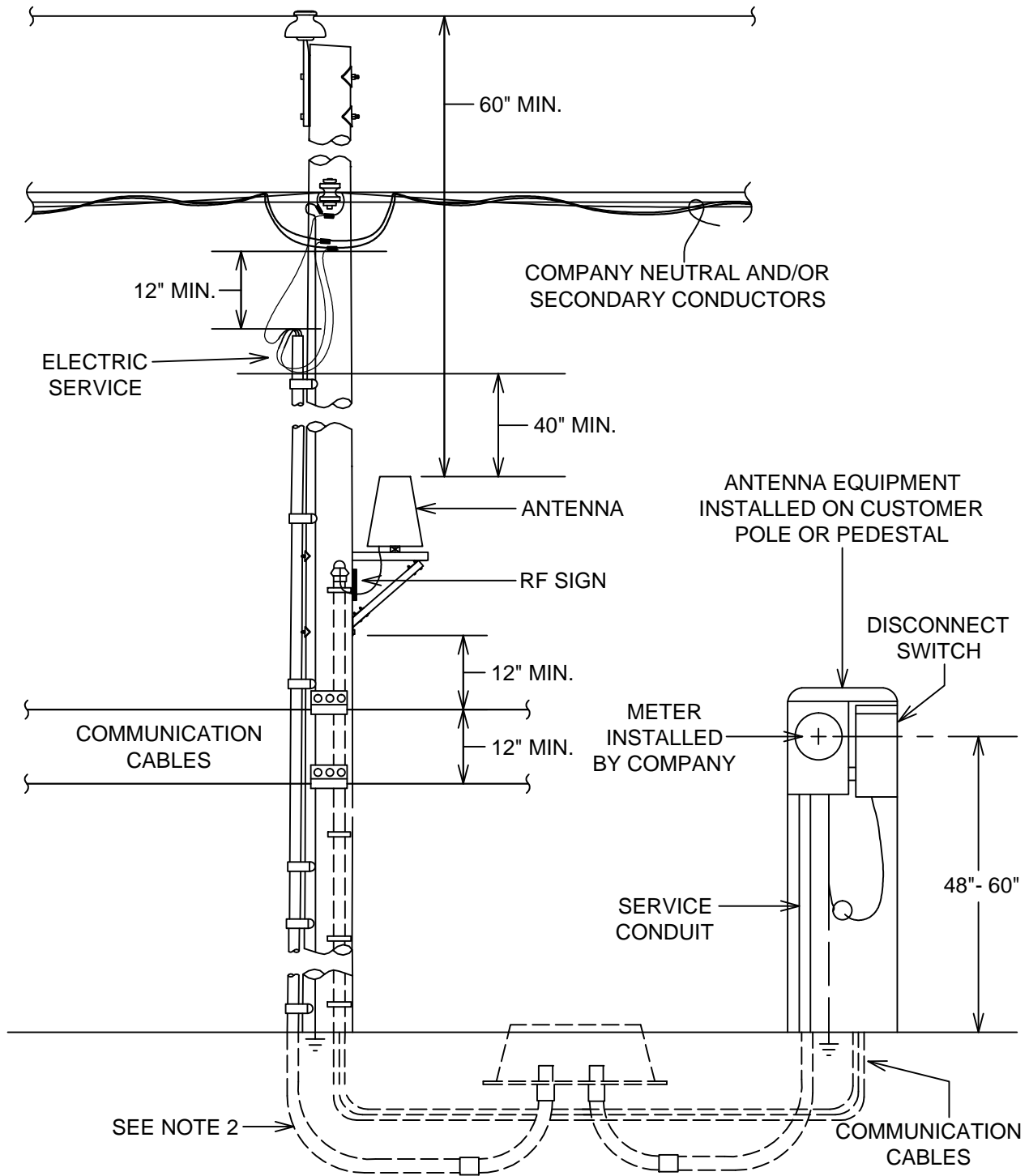
BY JAL

DATE 05-09-19

REV. 1

07.04-04

REV. 1 (05/09/19) - CHANGED SCE&G TO COMPANY



**NOTES:**

1. SEE DRAWINGS 07.01-01 AND 07.01-02 FOR GENERAL INFORMATION AND NOTES.
2. SEE DRAWING 06.04-04 FOR SERVICE REQUIREMENTS.

**EFFECTIVE  
DATE:  
04-29-19**

**DISTRIBUTION CONSTRUCTION STANDARD  
DOMINION ENERGY SOUTH CAROLINA, INC.**

# JOINT USE POLE SINGLE ARM TANGENT

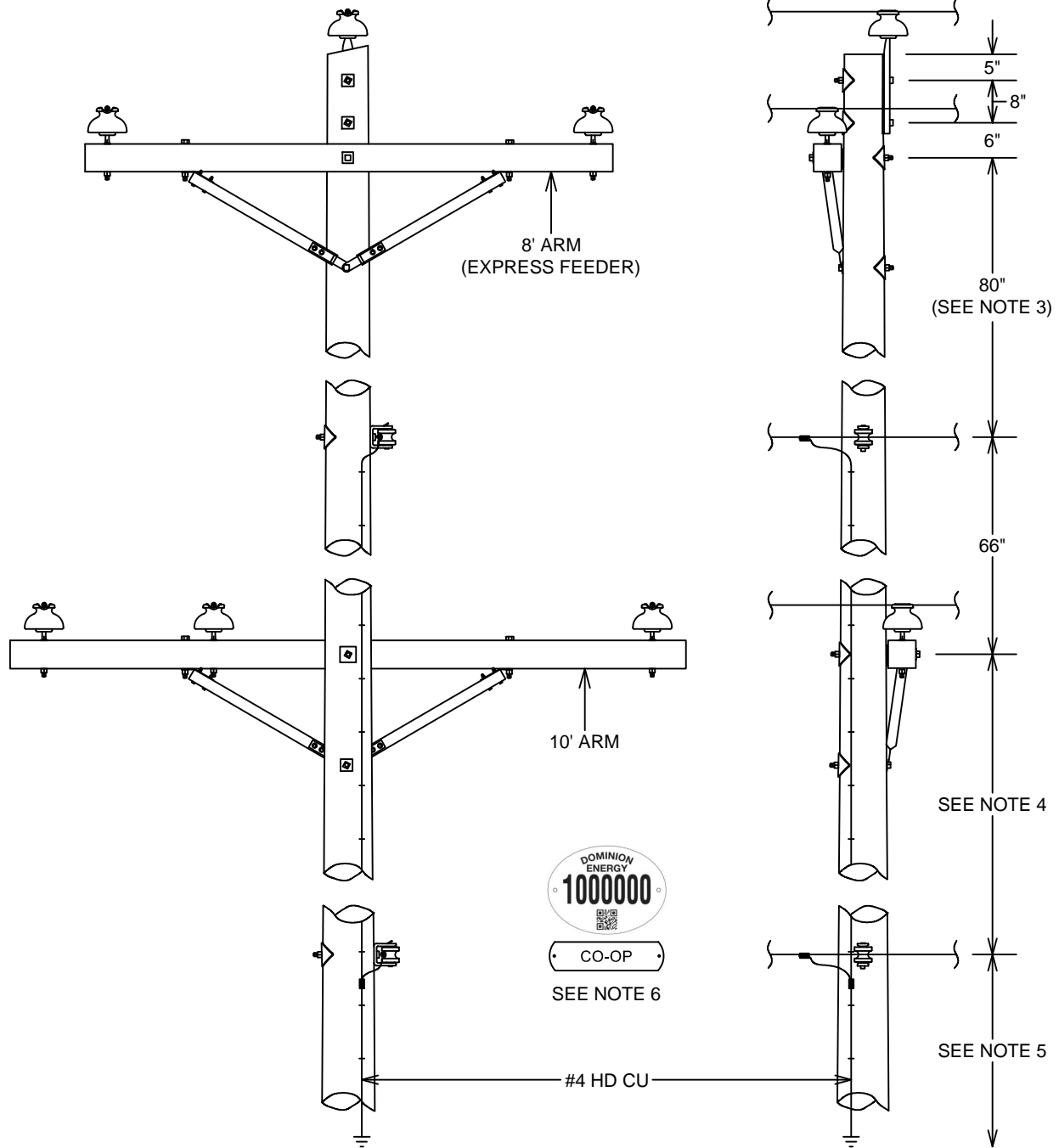
BY JAL

DATE 05-09-19

REV. 3

07.05-01

REV. 3 (05/09/19) - UPDATED COMPANY POLE TAG; CHANGED SCE&G TO COMPANY



**NOTES:**

1. SEE DRAWINGS 04.01-01 AND 07.01-01 FOR GENERAL INFORMATION AND NOTES.
2. WITH THE EXCEPTION OF CUTOUTS AND LIGHTNING ARRESTERS, NO EQUIPMENT IS ALLOWED IN THE EXPRESS FEEDER (TOP) POSITION.
3. COMPANY NEUTRAL SPACING CAN BE REDUCED TO 36 INCHES TO SAVE POLE HEIGHT.
4. FOREIGN UTILITY DIMENSIONS WILL BE SPECIFIED BY THAT UTILITY.
5. CLEARANCES MUST MEET MINIMUM REQUIREMENTS (SEE SECTION 1 - CLEARANCES).
6. WHEN COMPANY IS TOP CIRCUIT, INSTALL COMPANY POLE TAG ABOVE FOREIGN POLE TAG. WHEN COMPANY IS BOTTOM CIRCUIT, INSTALL COMPANY POLE TAG BELOW FOREIGN POLE TAG.

**EFFECTIVE  
DATE:  
04-29-19**

DISTRIBUTION CONSTRUCTION STANDARD  
DOMINION ENERGY SOUTH CAROLINA, INC.



# JOINT USE POLE FG DEADEND BUCK

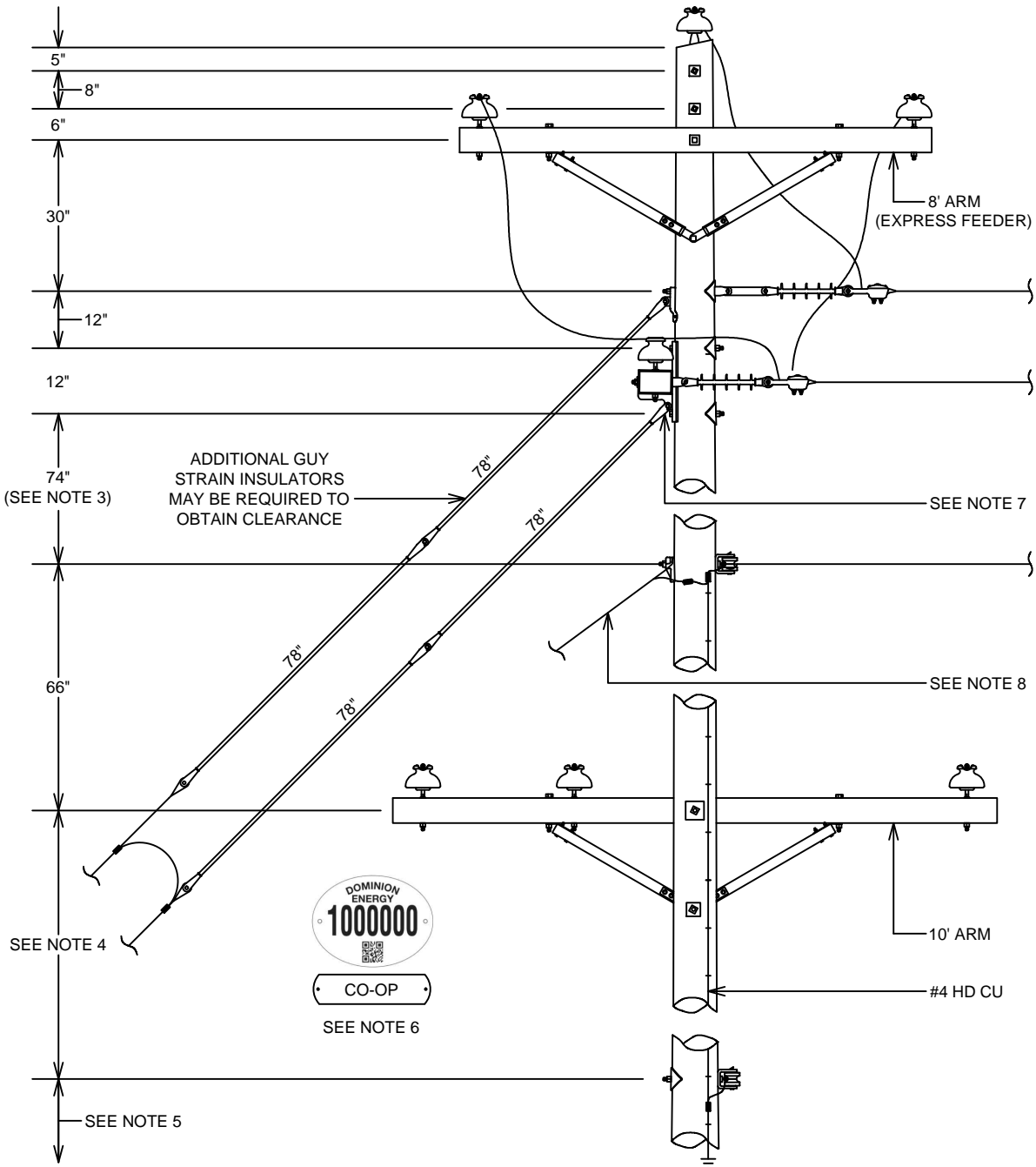
BY JAL

DATE 05-09-19

REV. 3

07.05-02

REV. 3 (05/09/19) - UPDATED COMPANY POLE TAG; CHANGED SCE&G TO COMPANY



- NOTES:
1. SEE DRAWINGS 04.01-01 AND 07.01-01 FOR GENERAL INFORMATION AND NOTES.
  2. WITH THE EXCEPTION OF CUTOUTS AND LIGHTNING ARRESTERS, NO EQUIPMENT IS ALLOWED IN THE EXPRESS FEEDER (TOP) POSITION.
  3. COMPANY NEUTRAL SPACING CAN BE REDUCED TO 36 INCHES TO SAVE POLE HEIGHT.
  4. FOREIGN UTILITY DIMENSIONS WILL BE SPECIFIED BY THAT UTILITY.
  5. CLEARANCES MUST MEET MINIMUM REQUIREMENTS (SEE SECTION 1 - CLEARANCES).
  6. WHEN COMPANY IS TOP CIRCUIT, INSTALL COMPANY POLE TAG ABOVE FOREIGN POLE TAG. WHEN COMPANY IS BOTTOM CIRCUIT, INSTALL COMPANY POLE TAG BELOW FOREIGN POLE TAG.
  7. USE ONLY LOWER GUY POSITION ON FIBERGLASS ARM.
  8. CONTACT MES DEPARTMENT FOR ASSISTANCE WITH NEUTRAL GUY.

EFFECTIVE  
DATE:  
04-29-19

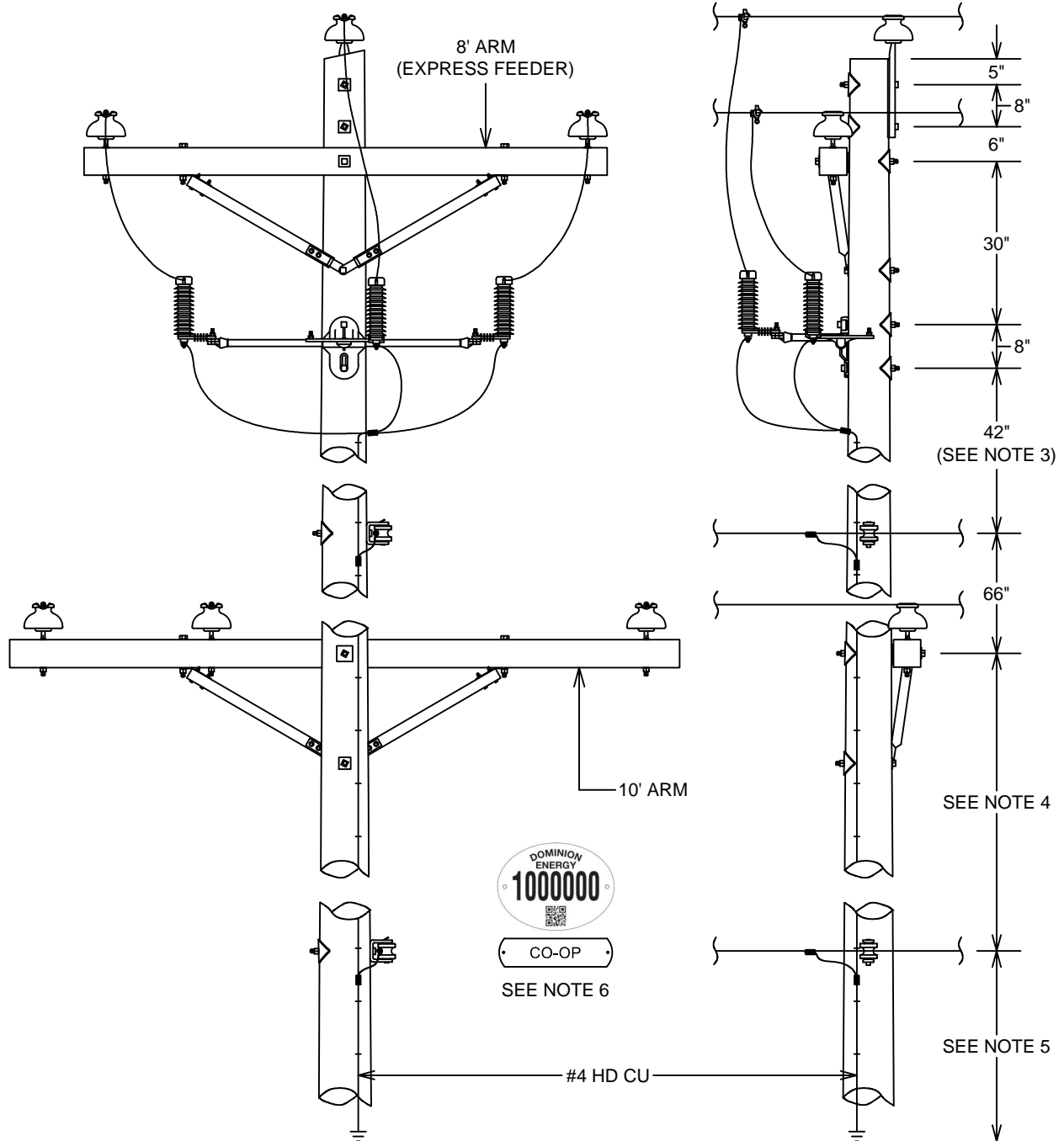
**DISTRIBUTION CONSTRUCTION STANDARD**  
**DOMINION ENERGY SOUTH CAROLINA, INC.**

# JOINT USE POLE WITH LIGHTNING ARRESTERS

BY    JAL     
DATE    05-09-19     
REV.    3   

**07.05-03**

REV. 3 (05/09/19) - UPDATED COMPANY POLE TAG; CHANGED SCE&G TO COMPANY



**NOTES:**

1. SEE DRAWINGS 04.01-01 AND 07.01-01 FOR GENERAL INFORMATION AND NOTES.
2. WITH THE EXCEPTION OF CUTOUTS AND LIGHTNING ARRESTERS, NO EQUIPMENT IS ALLOWED IN THE EXPRESS FEEDER (TOP) POSITION.
3. COMPANY NEUTRAL SPACING CAN BE REDUCED TO 36 INCHES TO SAVE POLE HEIGHT.
4. FOREIGN UTILITY DIMENSIONS WILL BE SPECIFIED BY THAT UTILITY.
5. CLEARANCES MUST MEET MINIMUM REQUIREMENTS (SEE SECTION 1 - CLEARANCES).
6. WHEN COMPANY IS TOP CIRCUIT, INSTALL COMPANY POLE TAG ABOVE FOREIGN POLE TAG. WHEN COMPANY IS BOTTOM CIRCUIT, INSTALL COMPANY POLE TAG BELOW FOREIGN POLE TAG.

**EFFECTIVE  
DATE:  
04-29-19**

**DISTRIBUTION CONSTRUCTION STANDARD  
DOMINION ENERGY SOUTH CAROLINA, INC.**