

We're working hard for you, South Carolina.

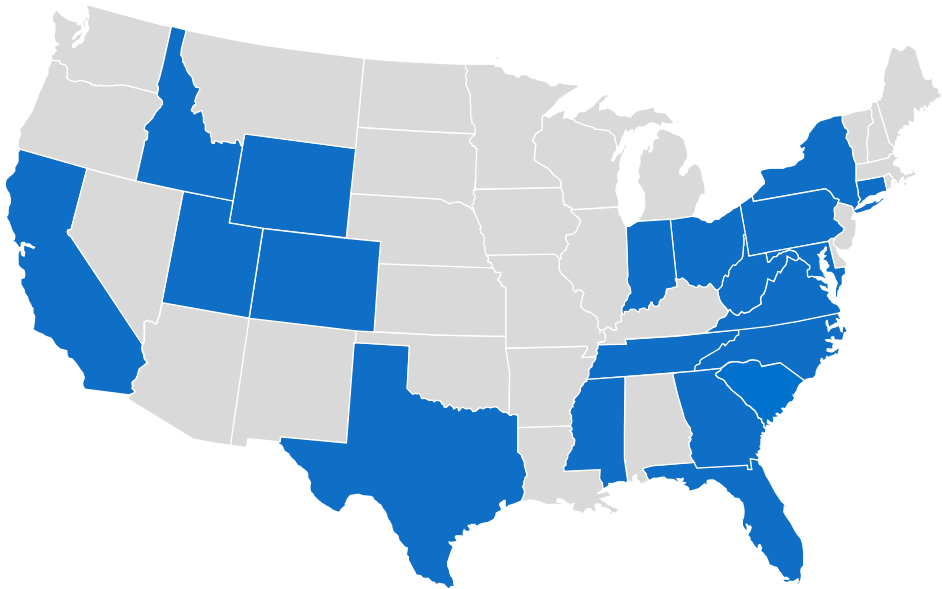
Large Customer Webinar
October 7, 2020



John Raftery
Director, Rates & Regulatory Affairs

Dominion Energy

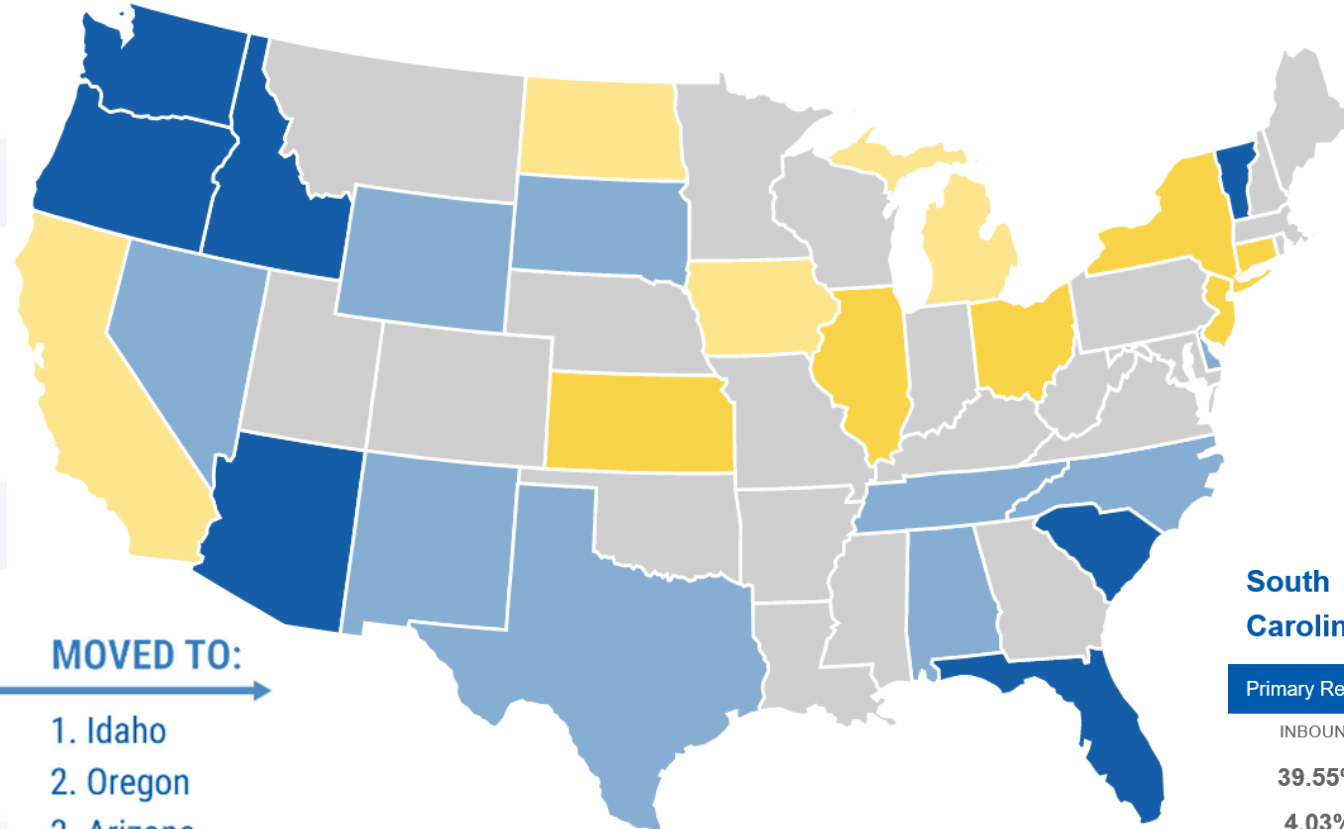
National regulated energy infrastructure footprint



20	States of Operation
~21,000	Employees
7.5M	Utility Customers

TOP STATES

people moved to and from in 2019



MOVED TO:

1. Idaho
2. Oregon
3. Arizona
4. South Carolina
5. Washington

MOVED FROM:

1. New Jersey
2. Illinois
3. New York
4. Connecticut
5. Kansas

South Carolina

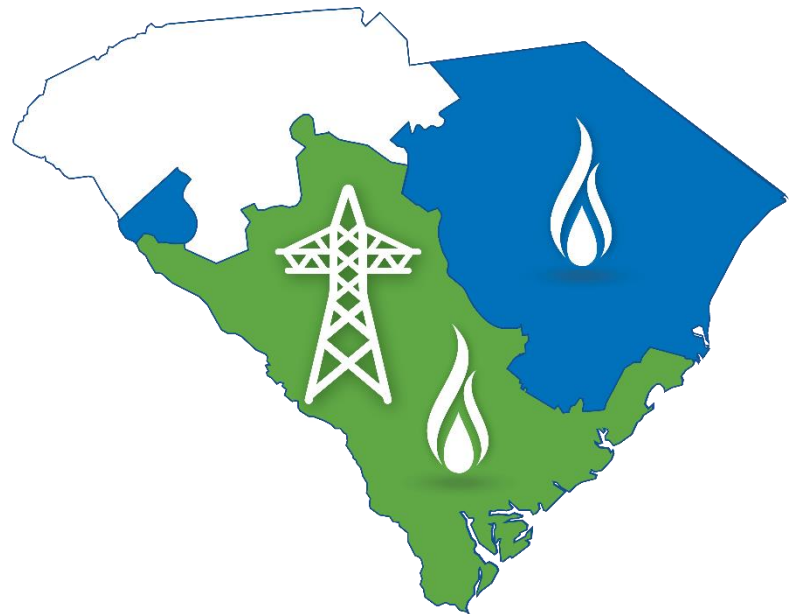
Total Inbound: 61.8%
Total Outbound: 38.2%

Primary Reason for Moving

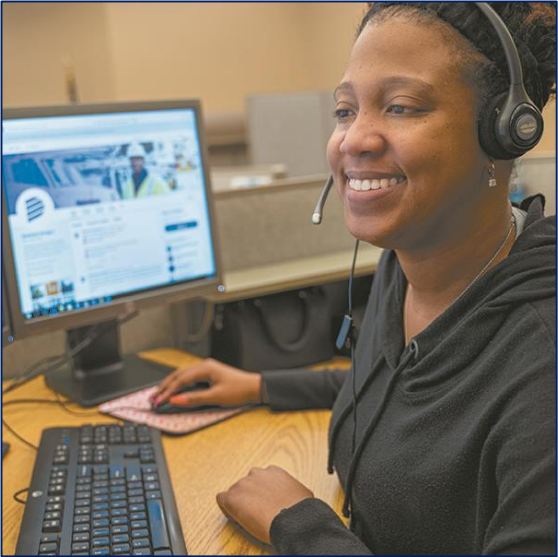
INBOUND		OUTBOUND	
39.55%	retirement	4.64%	
4.03%	health	3.97%	
18.14%	family	25.83%	
18.89%	lifestyle	11.26%	
34.51%	job	60.93%	

Dominion Energy South Carolina

~3,700	Employees
~400k	Gas Customers
~750k	Electric Customers



We Are Helping customers move forward



We Are Improving the quality of life in the communities we serve

Basic Human Needs



Employee Volunteerism

Environmental Stewardship



Lowcountry Oyster Bed Cleaning Project

Education Enrichment



Cocky's Reading Express

Community Vitality



International African American Museum

We Are Focusing on safety as a top priority



Pandemic Safety Measures



Scam Awareness

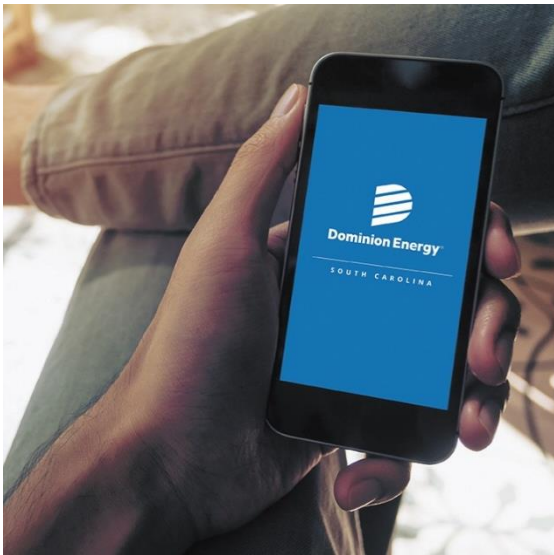


Infrastructure Maintenance

We Are Delivering historic results in service reliability



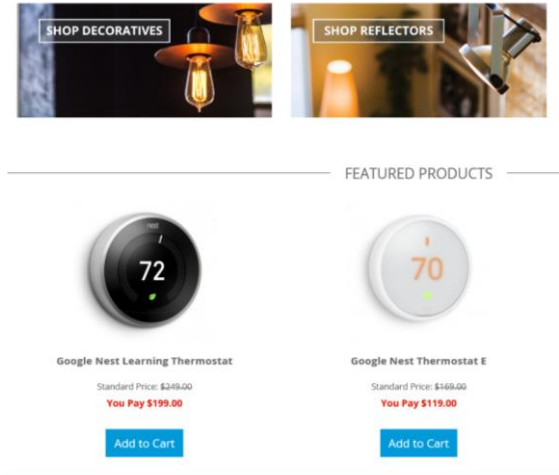
We Are Making it easier to do business with us



Dominion Energy SC App



Free Home Energy Checkup & Smart Meter



Dominion Energy Online Savings Store

We Are Providing a clean and sustainable energy future



Solar Generation



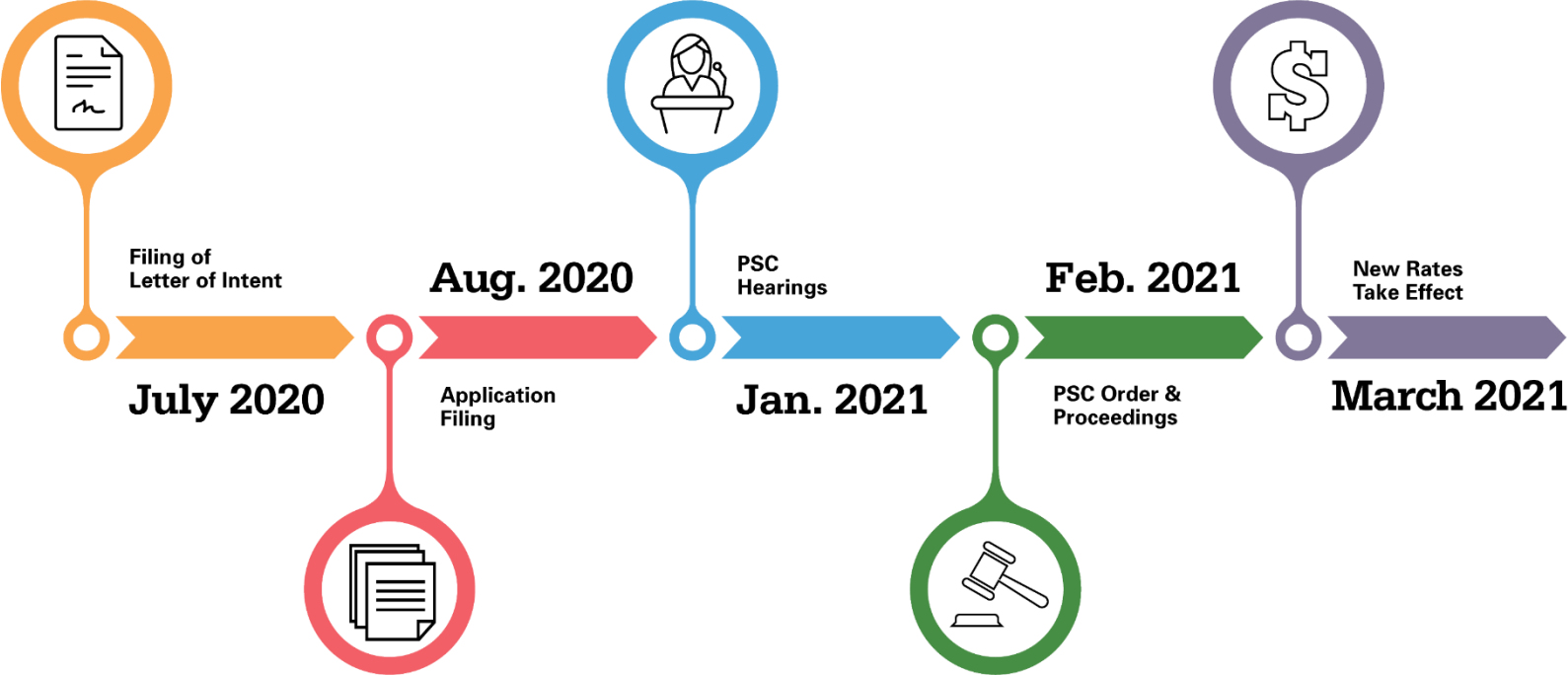
Low-Carbon Natural Gas



Electric Transit

Regulatory Rate Review 2020

What happens next?



2020 Rate Review

- Requested increase to base rates is **first in eight (8) years**
- Current rates **do not reflect true cost** of serving the region's growing customer base including **\$75M in increased local and state property taxes**
- Dominion Energy South Carolina has reduced annual operating costs **more than \$45M** while improving customer service and reliability
- Does **NOT** include costs of cancelled VC Summer Units 2&3 or Merger Integration Activities



2020 Rate Review

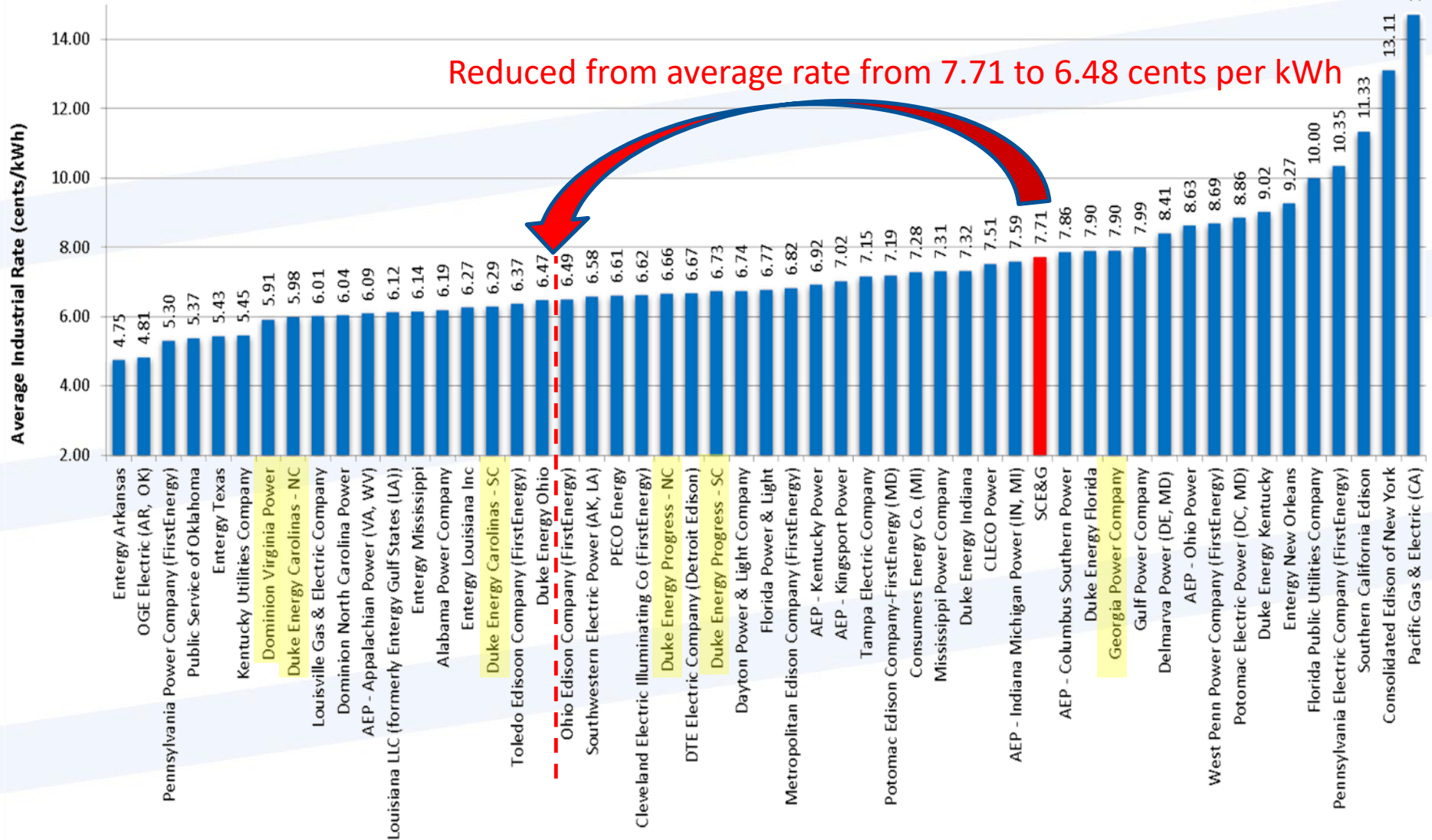
- Total amount requested is **less than a 1% per year** increase, or **approximately one-half the US Dept of Labor inflation of 14%**
- Deferrals including
 - **NRC Requirements based on Fukushima**
 - **Cyber Security Compliance**
 - **NERC Critical Infrastructure Protection**
 - **Storm Response and Restoration**

Benefits to Our Customers

- **\$2.1B in Reliability Enhancements**
 - 53,000 distribution transformers
 - 3,100 distribution lines
 - 882 circuit miles of transmission lines
 - 29 switchyards & substations
- **\$878M in Upgrades & Environmental Controls** for our generation stations to provide Cleaner Energy
- **\$198M in Information Technology, Software and Fleet Maintenance** to include installing AMI metering, deploying drone technology, and hardening security



Edison Electric Institute – Summer 2018



Source: Edison Electric Institute | Typical Bills and Average Rates Report Summer 2018

Factors: Industrial Customer, 1000 kW, 650,000 kWh, 89% Load Factor

Data includes the top 10 utilities in the nation and member utilities in the SEE.

Bills and averages compiled by Rate Regulation Department of the EEI, using rates in effect July 1, 2018 and average revenue data from the year preceding July 1, 2018.



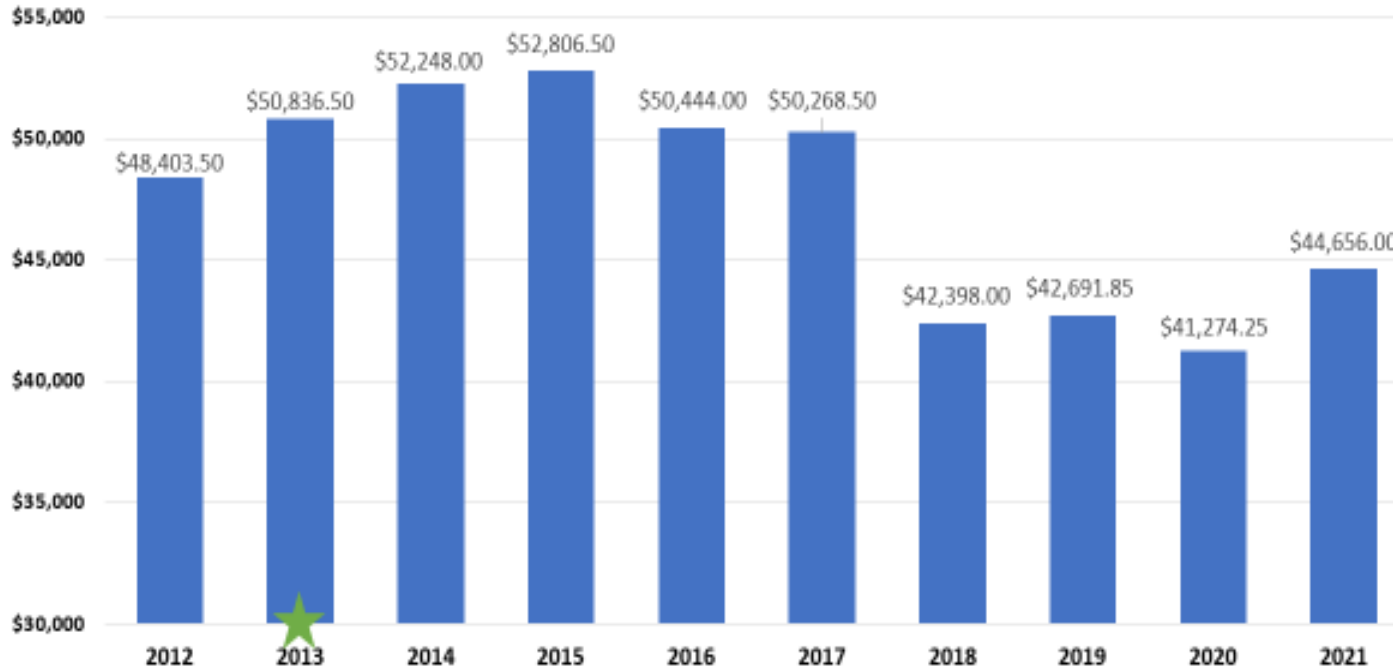
Projected Base Rate Change Impact

	Load Factor		
	30%	60%	90%
ENERGY	219,000	438,000	657,000
May 2020 Monthly Bill (Opt In)	\$24,559	\$33,053	\$41,546
March 2021 Monthly Bill (Opt In)	\$26,572	\$35,779	\$44,985
Difference	\$2,013	\$2,726	\$3,439
May 2020 Monthly Bill (Opt Out)	\$24,348	\$32,595	\$40,842
March 2021 Monthly Bill (Opt Out)	\$26,342	\$35,319	\$44,295
Difference	\$1,994	\$2,724	\$3,453
% Increase	8.19%	8.36%	8.45%

Note: For 1,000 kW customer served on Rate 23.

Historic DESC Electric Rates

Average Rate 23 Monthly Bill 1,000 kW and 650,000 kWh



US Average ** \$67,959

S. Atlantic Region Avg ** \$46,157

★ Last base rate change

** Edison Electric Institute | Typical Bills and Average Rates Report Winter 2020

We Are Working Hard for You, South Carolina

