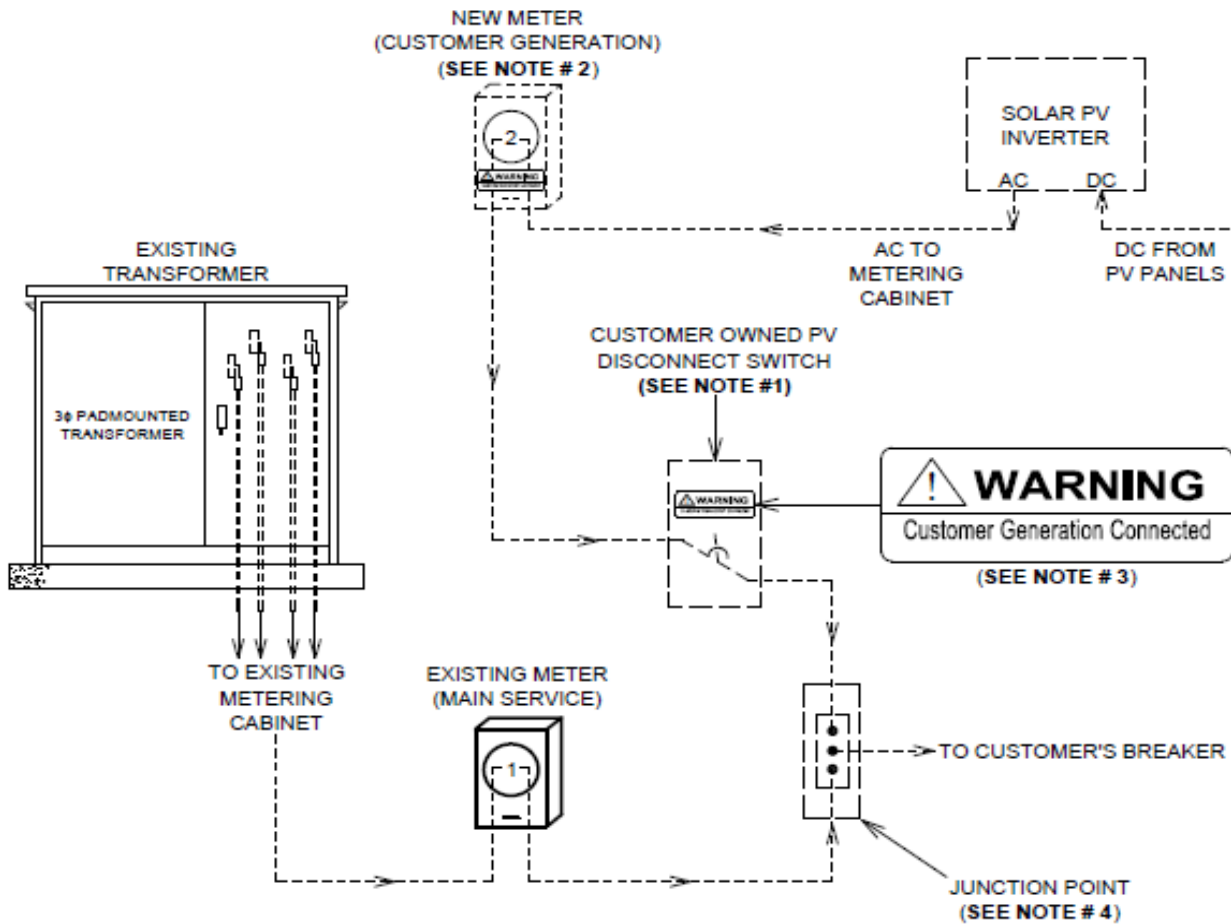


DOMINION ENERGY SOUTH CAROLINA COMMERCIAL SOLAR PROJECTS

NET METERING CONNECTION



NOTES:

1. CUSTOMER OWNED PHOTOVOLTAIC (PV) DISCONNECT SWITCH IS REQUIRED TO SERVE AS A CLEAR VISIBLE INDICATION OF SWITCH POSITION, BE LOCKABLE IN THE OPEN POSITION WITH A DOMINION ENERGY SOUTH CAROLINA STANDARD PADLOCK, AND BE LOCATED ADJACENT TO THE EXISTING SERVICE METER OR DELIVERY POINT.
2. CUSTOMER RESPONSIBILITY FOR PROVIDING, INSTALLING AND MAINTAINING METERING EQUIPMENT FOR THE GENERATION METER FOLLOWS THE SAME REQUIREMENTS AS STANDARD REVENUE METERING. THESE REQUIREMENTS ARE DOCUMENTED IN SECTION 5 OF THE DOMINION ENERGY SOUTH CAROLINA ELECTRIC SERVICE AND METER INSTALLATIONS MANUAL (AVAILABLE AT DOMINIONENERGYSC.COM).
3. NEW METER SOCKET AND PV DISCONNECT SWITCH ARE TO BE LABELED WITH WARNING, AS SHOWN. DOMINION ENERGY SOUTH CAROLINA WILL PROVIDE LABELS (STOCK CODE 080.7960.0380).
4. PV CONDUCTORS TO BE CONNECTED AT DESIGNATED JUNCTION POINT.