



South Carolina Generator Interconnection Procedures (SCGIP) Customer Guide

Dominion Energy South Carolina utilizes a State of South Carolina (SC) mandated and approved process, known as the South Carolina Generator Interconnection Procedures (SCGIP), to evaluate the interconnection of renewable energy facilities and other nonutility-owned generation to the Dominion Energy South Carolina transmission and distribution system. These procedures apply to Generating Facilities that are interconnecting to Utility Systems in South Carolina where the Interconnection Customer is not selling the output of its Generating Facility to an entity other than the Utility to which it is interconnecting. This document is intended as a guide to help the Interconnecting Customer understand the SCGIP. Should there be any discrepancies in this document and the SCGIP, the SCGIP will apply.

FACILITY TYPE	FACILITY SIZE ¹	APPLICABLE TARIFF PROCEDURE
FACILITIES WITH THE INTENT TO SELL POWER ONLY TO DOMINION ENERGY SOUTH CAROLINA (QUALIFYING FACILITIES)	> 80MW, OR PROJECTS OF ANY SIZE REQUESTING NETWORK INTERCONNECTION SERVICE	LARGE GENERATOR INTERCONNECTION AGREEMENT, PLEASE REFER TO THE DOMINION ENERGY SOUTH CAROLINA OASIS FOR MORE INFORMATION. http://www.oasis.oati.com/sceg/
	> 2MW – 80MW, or < 2MW and ineligible for Fast Track or 20kW inverter process	SCGIP – STUDY PROCESS
	> 20kW – up to 2MW (See table on next page for eligibility)	SCGIP – FAST TRACK PROCESS (IF SCREENS ARE MET, OTHERWISE STUDY PROCESS)
	0 – 20kW	SCGIP – INVERTER PROCESS (IF SCREENS ARE MET, OTHERWISE STUDY PROCESS) PLEASE CONTACT DOMINION ENERGY SOUTH CAROLINA RENEWABLES PRODUCTS & SERVICES AT 866-660-3705 OR AT SCRenewableEnergy@DominionEnergySC.com
FACILITIES WITH THE INTENT TO SELL TO DOMINION ENERGY SOUTH CAROLINA AND OTHERS	0 – 20MW	SMALL GENERATOR INTERCONNECTION PROCEDURE, PLEASE REFER TO THE DOMINION ENERGY SOUTH CAROLINA OASIS FOR MORE INFORMATION. http://www.oasis.oati.com/sceg/
FACILITIES WITH THE INTENT TO SELL TO DOMINION ENERGY SOUTH CAROLINA AND OTHERS	> 20MW OR PROJECTS OF ANY SIZE REQUESTING NETWORK INTERCONNECTION SERVICE	LARGE GENERATOR INTERCONNECTION PROCEDURE, PLEASE REFER TO THE DOMINION ENERGY SOUTH CAROLINA OASIS FOR MORE INFORMATION. http://www.oasis.oati.com/sceg/

¹ Interconnection Requests shall be evaluated based on the Generating Facility's maximum rated capacity.



South Carolina Generator Interconnection Procedures (SCGIP) Customer Guide

The SCGIP contains four processes. The applicable process for each specific interconnection request depends on a number of factors.

1. Pre-Application Process

- An Interconnection Customer (IC) may submit a formal written Pre-Application Report request form along with a non-refundable fee of \$500 for a pre-application report on a proposed project at a specific site.
- Transmission Provider (TP) shall provide pre-application report within 20 Business Days (BD) of receipt of the completed request form and payment of the \$500 fee. The report need only include existing data.
- The report is non-binding, does not confer any rights, and the IC must still successfully apply to be interconnected to the TP’s system and to obtain a Queue Number.
- Any one developer shall have no more than ten requests for Pre-Application reports in the queue at one time.

2. Fast Track Process

For Certified Generating Facilities as identified on the Fast Track Eligibility table, Technical screens, instead of interconnection studies, are used to quickly identify reliability and safety issues.

<u>Fast Track Eligibility for Inverter-Based Systems¹</u>		
<u>Line Voltage</u>	<u>Fast Track Eligibility Regardless of Location</u>	<u>Fast Track Eligibility on a Mainline² and ≤ 2.5 Electrical Circuit Miles from Substation³</u>
< 5kV	≤ 100kW	≤ 500kW
≥ 5kV and < 25kV	≤ 1MW	≤ 2MW

¹ Must be an UL certified inverter.

² A main line is a three-phase backbone of a circuit; will typically constitute lines with wire sizes of 4/0 American wire gauge, 336.4 kcmil, 397.5 kcmil, 477 kcmil and 795 kcmil.

³ An Interconnection Customer can determine this information about it’s proposed interconnection location in advance by requesting a pre-application report pursuant to section 1.2.



South Carolina Generator Interconnection Procedures (SCGIP) Customer Guide

3. Study Process

Default method consisting of a scoping meeting, a system impact study and a facilities study .

System Impact Study - This is a more detailed assessment of the effect the interconnection would have on the TP's electric system and Affected Systems.

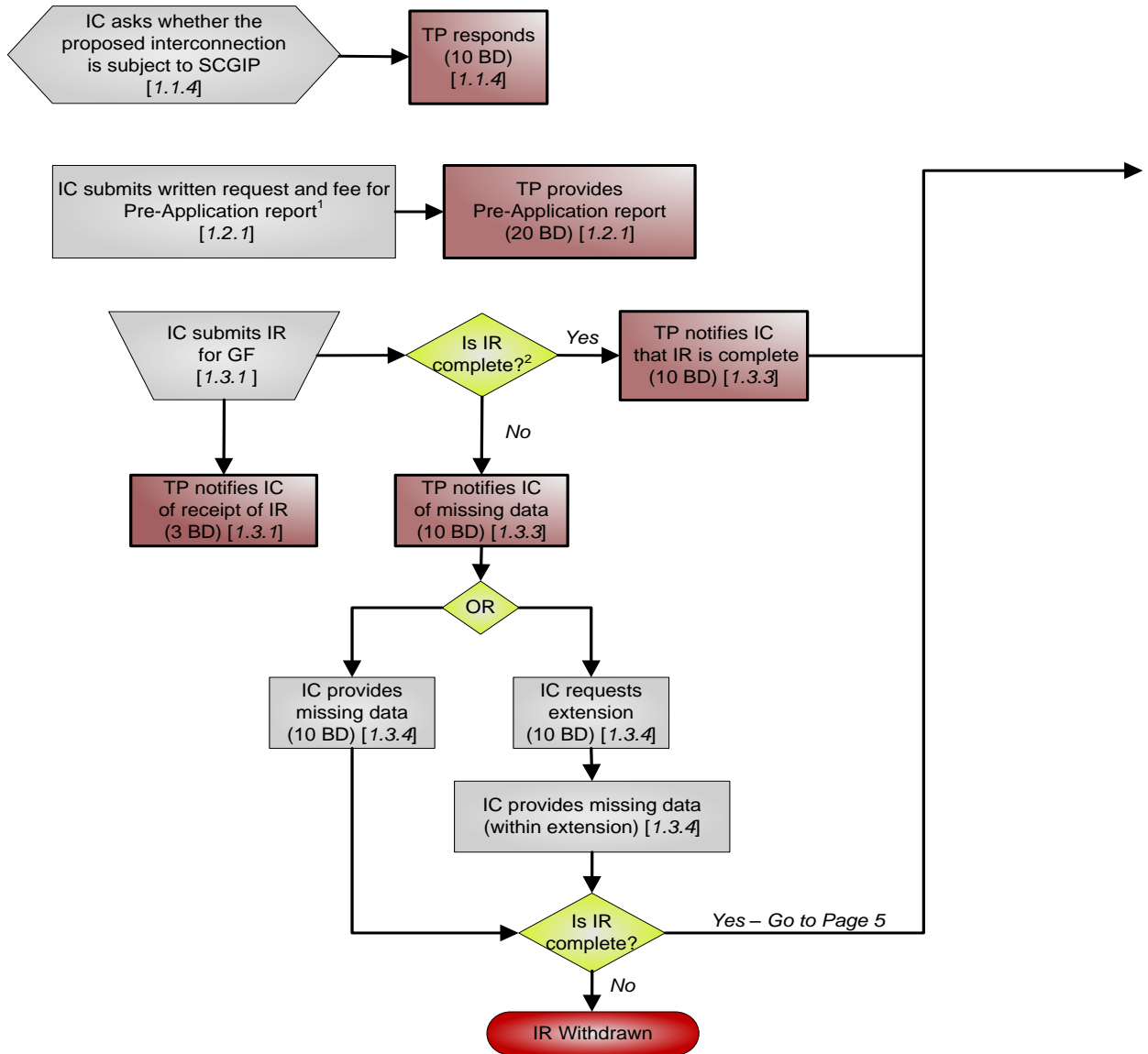
Facilities Study – This determines what modification to the TP's electric system are needed, includes detailed costs and scheduled completion dates for these modifications.




- Once IC agrees to fund any needed upgrades, the Parties execute an Interconnection Agreement that, among other things, formalizes responsibility for construction and payment for Interconnection Facilities and Upgrades.

4. 20 kW Inverter Process

- For Certified inverter-based Generating Facility no larger than 20kW
- Interconnection Agreement does not apply to requests to interconnect submitted under the 20kW Inverter Process.

The TP's evaluation of a project with multiple Points of Interconnection should be performed, using Good Utility Practice (TP has the option to either treat such projects separately for queuing and interconnection study purposes, or as a single Point of Interconnection), based on the project's unique engineering and geographic needs.



Legend	
	Decision
	IC Action
	TP Action
[Section # of SCGIP]	

Abbreviations			
BD	Business Days	IR	Interconnection Request
FTP	Fast Track Process	GF	Generating Facility
IA	Interconnection Agreement	SIS	System Impact Study
IC	Interconnection Customer	TP	Transmission Provider

Notes:

- \$500 non-refundable fee for a pre-application report on a proposed project at a specific site.
- A complete IR includes a completed application form, a deposit or fee, and demonstration of site control. Non-Refundable processing fees for the Fast Track Process are based on the size for the Generating Facility; \$100 for 20kW or smaller; \$250 for > 20kW ≤ 100kW; \$500 for > 100kW ≤ 2MW. Under the Study Process, there is a Deposit Charge of \$10,000 plus \$1 per kW_{AC} inclusive of a \$1,000 fee to administer the Interconnection Request. The Study Process deposit is intended to cover anticipated costs for the System Impact and Facilities Studies and shall be applicable towards the costs of Upgrades and Interconnection Facilities.

This diagram is for illustrative purposes only. Should there be any difference in this diagram and the SCGIP, the SCGIP will apply.

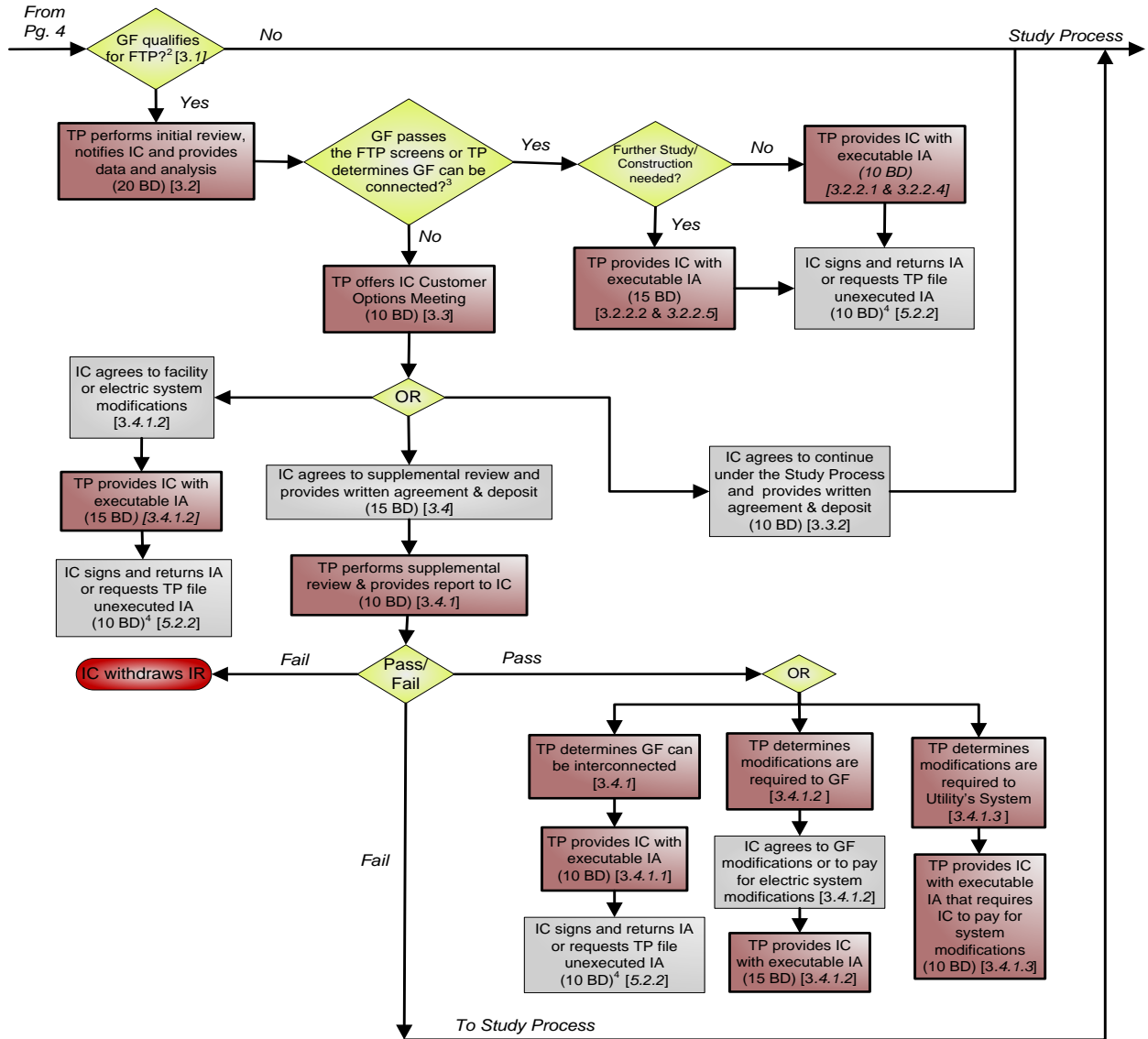


South Carolina Generator Interconnection Procedures (SCGIP)

(For generating facilities no larger than 80 MW)

Section 2. Fast Track Process

(Only available for certified GF's based on Fast Track eligibility)¹



Legend

Decision (Yellow Diamond)

IC Action (Light Blue Box)

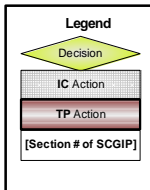
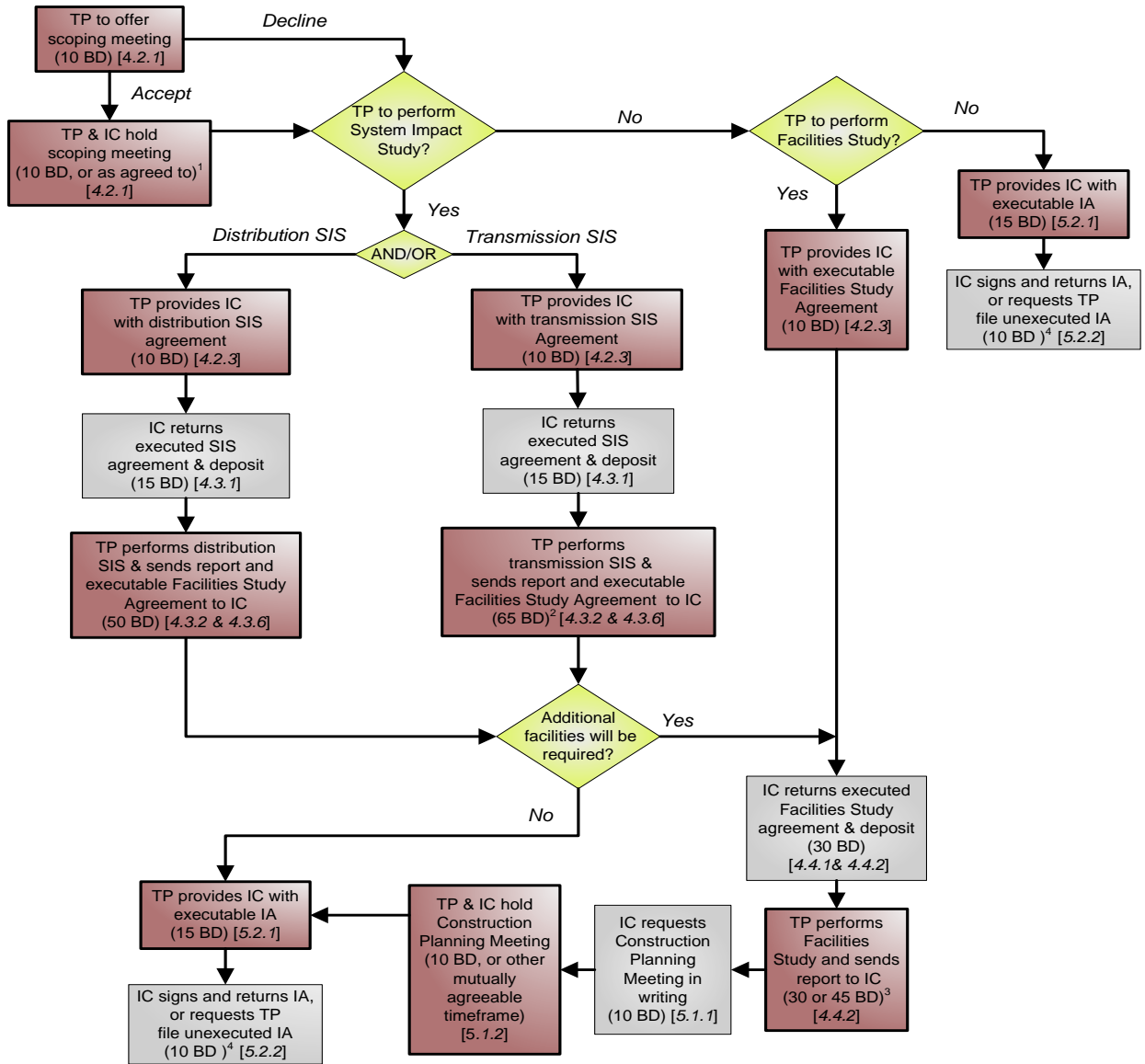
TP Action (Light Red Box)

[Section # of SCGIP]

Abbreviations			
BD	Business Days	IR	Interconnection Request
FTP	Fast Track Process	GF	Generating Facility
IA	Interconnection Agreement	SIS	System Impact Study
IC	Interconnection Customer	TP	Transmission Provider

- Notes:
1. A "Certified" Generating Facility is one that has been certified by a nationally recognized laboratory before the Interconnection Request is submitted to the TP.
 2. The Fast Track Process is available to the IC if the GF meets the requirements of Attachments 5 & 6 of the SCGIP, or if the TP has reviewed the design or tested the GF and is satisfied that it is safe to operate [3.1].
 3. If TP determines the IR cannot be approved without (1) minor modifications at minimal cost, (2) additional studies or actions, or (3) incurring significant cost to address safety, reliability, or power quality problems, TP shall notify IC of that determination within (5) Business Days [3.3].
 4. If the IC does not sign the IA, the IR is deemed withdrawn.

This diagram is for illustrative purposes only. Should there be any difference in this diagram and the SCGIP, the SCGIP will apply.



Abbreviations			
BD	Business Days	IR	Interconnection Request
FTP	Fast Track Process	GF	Generating Facility
IA	Interconnection Agreement	SIS	System Impact Study
IC	Interconnection Customer	TP	Transmission Provider

Notes:

- The Scoping Meeting may be omitted by mutual agreement.
- The TP has 20 additional BD to complete a System Impact Study requiring review by Affected Systems.
- In cases where upgrades are required, the Facilities Study must be completed within 45 BD. In cases where no upgrades are necessary, and the required facilities are limited to Interconnection Facilities, the Facilities Study must be completed within 30 BD.
- If the IC does not sign the IA, the IR is deemed withdrawn.
- Facilities Study Agreement, Section 8.

This diagram is for illustrative purposes only. Should there be any difference in this diagram and the SCGIP, the SCGIP will apply.