

OFFSET / SELL WIRING DIAGRAM

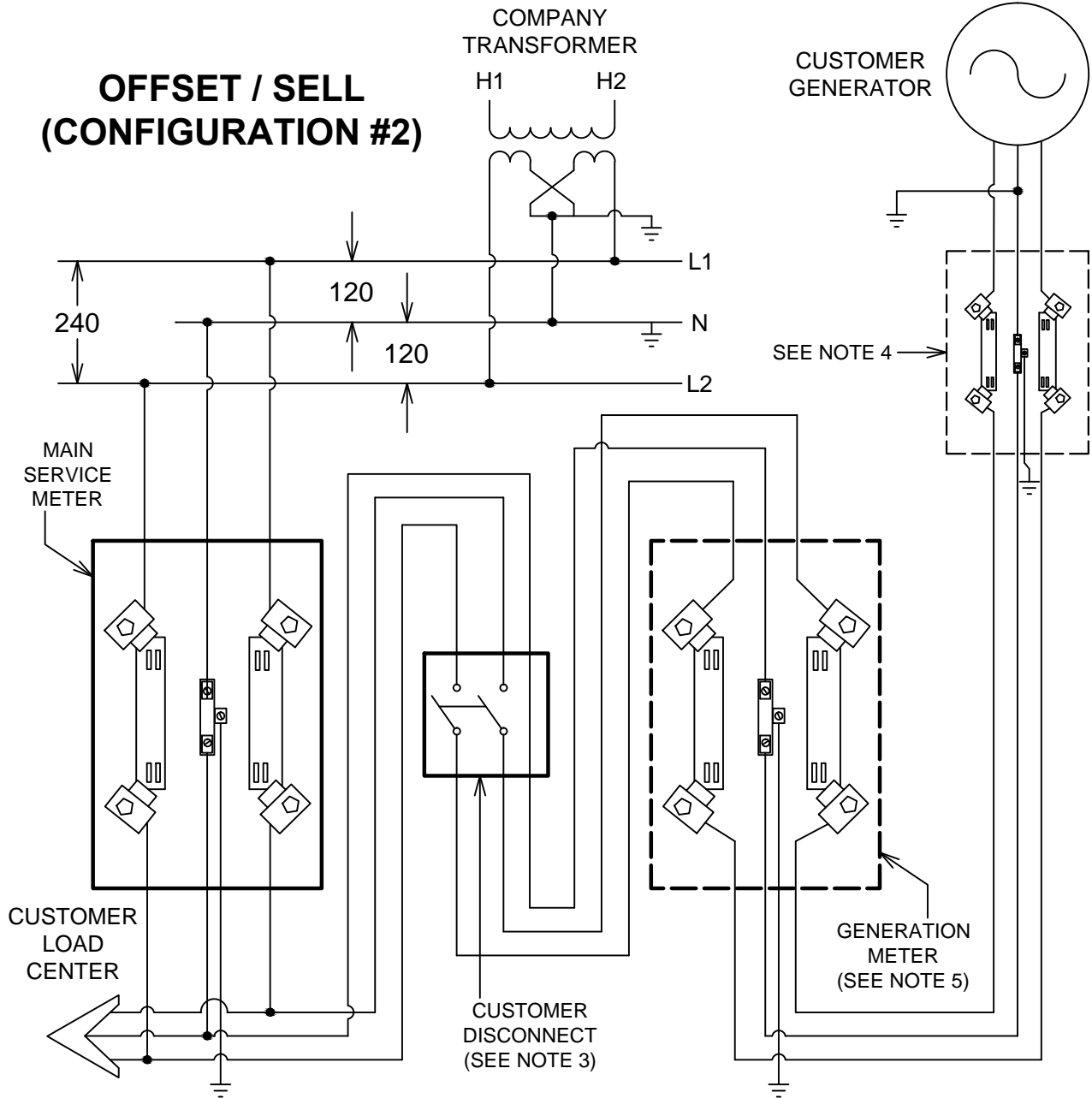
BY JAL

DATE 04-10-19

REV. 1

19.06-02

OFFSET / SELL (CONFIGURATION #2)



NOTES:

1. CUSTOMER GENERATOR CAN BE SOLAR, WIND OR OTHER QUALIFYING SYSTEM.
2. ALL EQUIPMENT MUST BE UL APPROVED, MEET IEEE STANDARDS AND COMPANY SAFETY REQUIREMENTS. INSTALLATION MUST MEET COMPANY, NEC, AND LOCAL CODE REQUIREMENTS.
3. MAIN SERVICE METER SOCKET AND CUSTOMER DISCONNECT MUST BE MARKED WITH PERMANENT LABELS (SUPPLIED BY COMPANY). STOCK CODE 080.7960.0380 (WARNING LABEL); STOCK CODE 080.7960.0377 (OFFSET / SELL LABEL).
4. IF REQUIRED, A NON-UTILITY METER SOCKET MAY BE INSTALLED BETWEEN THE GENERATOR AND THE MAIN SERVICE METER SOCKET. THE LOCATION OF THE NON-UTILITY METER SOCKET SHALL BE DETERMINED BY A COMPANY REPRESENTATIVE (THE PREFERRED LOCATION IS NOT ADJACENT TO THE MAIN SERVICE METER).
5. GENERATION METER ONLY REQUIRED FOR NET METERING.

REV. 1 (04/10/19) - CHANGED DWG TITLE; RENAMED CONFIGURATION #2 "OFFSET / SELL" (FORMERLY "NET METERING"); UPDATED NOTES

EFFECTIVE DATE:
04-29-19

**DISTRIBUTION CONSTRUCTION STANDARD
DOMINION ENERGY SOUTH CAROLINA, INC.**