

Winterpock Solar
 Chesterfield, Chesterfield County, Virginia

Owner/Developer:
 Dominion

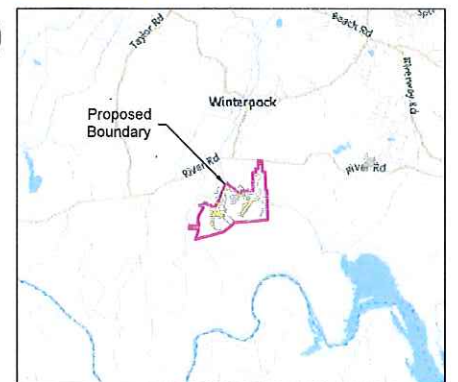
Project Site Description:
 Latitude: 37.319700°
 Longitude: -77.723300°
 Elevation: 174 ft min - 278 ft max
 Total Site Area - Available: 518.84 ± Acres
 Total Buildable Area: 200.26 ± Acres
 Total Fenced Acres: 180.38 ± Acres
 Total Array Footprint: 118.72 ± Acres

Annual Cooling Design Temp: 98.0° F
 Extreme Annual Min DB MeanTemp: 6.9° F (ASHRAE 2017)

Wind Load: 119, Risk Category III
 Snow Load: 20psf
 Seismic Load: SS= 0.20g, S1= 0.07g

Interconnection Data:
 Transmission Provider: Dominion
 Interconnection Voltage: 34.5kV
 Offtaker: Dominion
 Point of Interconnection: Existing 34.5kV Transmission Line N of Site ~1,000' LF

- Legend**
- Property Line
 - Underground AC Line
 - Overhead AC Line
 - Directional Bore
 - Perimeter Fence
 - Existing Overhead Line
 - Existing Stream
 - Property Setback Line
 - Cultural Area Buffer Line
 - Adjacent Property Buffer
 - Archaeological Resource Area
 - Cultural Resource Area
 - Existing Resource Protection Area
 - Wetlands
 - 100-YR FEMA Flood Plain
 - 500-YR FEMA Flood Plain
 - Proposed Landscaping Buffer
 - Proposed Storm Water Management
 - 545W Module Array
 - 550W Module Array

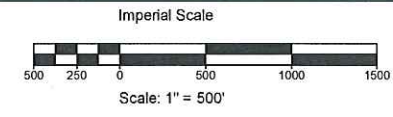


Item	Source	Date, Revision
Site Boundary	ALTA CAD File completed by Maser Consulting: 20200902 ALTA Drawing.dwg_Final_1.dwg	9/1/2020
CUP	CUP Letter: Winterpock_ZoningApproval_Letter_12.17.2019 (1).pdf_Final_1.pdf	12/17/2019
Geotech	Geotech Report from Terracon: Project #: 70205081.Rev1	7/23/2020
FEMA	Panel: 51041C0280D	12/17/2012
Topographic Survey	Client Provided TOPO: 20200902 TOPO Drawing.dwg	6/5/2020
Hydrology	None	N/A
Wetlands	Wetland Delineation Report by GEI Consultants: Project #: 1804422	1/10/2019
POI Location	CAD File from Cypress Creek: Winterpock_L_Zoning_SitePlan_20200724 (1).dwg_Final_1.dwg	7/24/2020
Aerial Imagery	USGS via Bing Maps	N/A
ASHRAE	http://ashrae-meteo.info/index.php	ASHRAE 2017
Wind Load Source	https://hazards.atcouncil.org/	(ASCE7-16)
Snow Load Source	https://hazards.atcouncil.org/	(ASCE7-16)
Seismic Load Source	https://hazards.atcouncil.org/	(ASCE7-16)

*Files are based on State Plane Coordinate System NAD83

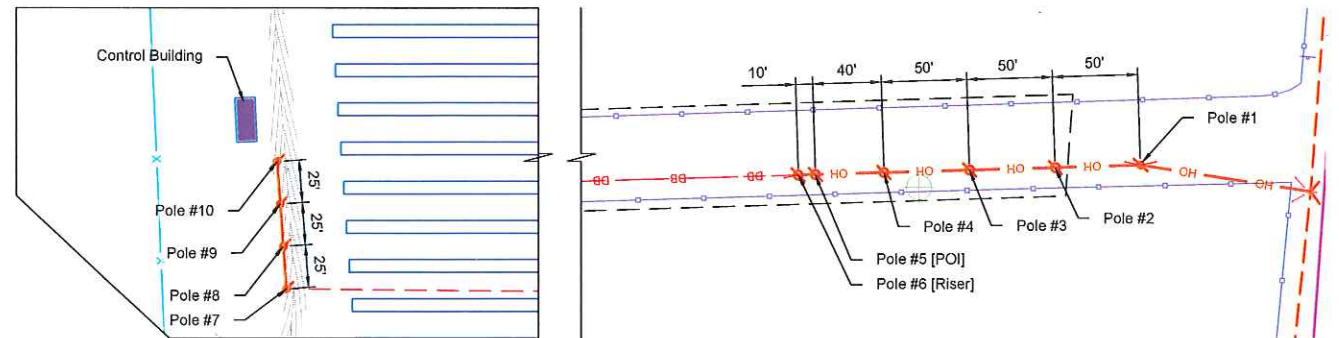
THIS DRAWING CONTAINS PROPRIETARY AND CONFIDENTIAL INFORMATION OF DEPCOM POWER, INCORPORATED. DEPCOM POWER RESERVES ALL COPYRIGHT RIGHTS TO IT UNDER U.S. AND INTERNATIONAL LAW. ANY REPRODUCTION, DERIVATIVE WORKS, DISTRIBUTION, PUBLIC DISPLAY, DISCLOSURE, AND/OR USE OF ANY PORTION OF THIS DRAWING IN ANY FORM WITHOUT WRITTEN AUTHORIZATION FROM DEPCOM POWER IS STRICTLY PROHIBITED.

Site Plan
 Scale: 1" = 500'



AC Capacity at Point of Interconnection: 20MWac

GSC	Number of Arrays	MWdc	MWac	dc/ac Ratio
1	6	28.03	20.43	1.3716
Total Capacity	6	28.03	20.43	1.3716



Point of Interconnection Detail
 Scale: 1" = 50'

DEPCOM POWER
 9185 E PIMA CENTER PARKWAY #100
 SCOTTSDALE, AZ 85258
 PHONE: (480) 270-6910
 WWW.DEPCOMPPOWER.COM
 A KOCH ENGINEERED SOLUTIONS COMPANY

Dominion Energy

Winterpock Solar
 Chesterfield, Chesterfield County,
 Virginia

THIS PRINT IS NOT TO BE USED FOR CONSTRUCTION UNLESS NOTED AND SIGNED "OK FOR CONSTRUCTION" ABOVE LAST REVISION

REV	DATE	DESCRIPTION	BY	CHK	APP
1	8-17-21	Revised with New Tracker Manufacturer	CF	MP	RR
2	8-26-21	Revised AC Capacity	CF	MP	RR
3	9-2-21	Revised DC Capacity	CF	MP	RR
4	10-21-21	Point of Interconnection	MP	MP	RR
5	11-16-21	Point of Interconnection	MP	MP	RR
6	11-12-21	Revised Meter Location	CF	MP	RR
7	4-15-22	Updated Module Bin Class & Allocation	DY	MP	RR
8	5-24-22	Updated Module Bin Class & Allocation	MP	MP	RR

DEPCOM JOB NUMBER: #####
 PROJECT CODE: VA28
 PROJECT DIRECTOR: TBD
 PROJECT MANAGER: TBD

Site Plan

CHECKED BY: MP
 DRAWN BY: CF
 SCALE: AS NOTED
 DRAWING NUMBER:

SP-100-5-T
 SHEET 1 OF 3

D:\DEPCOM Power Dev\CAD - PDE\Opportunities\Dominion Energy\Winterpock\Site Plans\WIP\Active Drawings\Winterpock SP-100-5-T - 5/24/2022 3:30 PM